

16 December 2009

AGREEMENT

**CONCERNING THE ADOPTION OF UNIFORM TECHNICAL PRESCRIPTIONS
FOR WHEELED VEHICLES, EQUIPMENT AND PARTS WHICH CAN BE FITTED
AND/OR BE USED ON WHEELED VEHICLES AND THE CONDITIONS FOR
RECIPROCAL RECOGNITION OF APPROVALS GRANTED ON THE BASIS OF
THESE PRESCRIPTIONS */**

(Revision 2, including the amendments that entered into force on 16 October 1995)

Addendum 106: Regulation No. 107

Revision 2 - Amendment 2

Supplement 4 to the 02 series of amendments: Date of entry into force: 24 October 2009

**UNIFORM PROVISIONS CONCERNING THE APPROVAL OF CATEGORY M₂
OR M₃ VEHICLES WITH REGARD TO THEIR GENERAL CONSTRUCTION**



UNITED NATIONS

*/ Former title of the Agreement:

Agreement Concerning the Adoption of Uniform Conditions of Approval and Reciprocal Recognition of Approval for Motor Vehicle Equipment and Parts, done at Geneva on 20 March 1958.

GE.10-20051

Paragraph 2.15., amend to read:

"2.15. "Gangway" means the space providing access by passengers from any seat or row of seats or each special area for wheelchair users to any other seat or row of seats or each special area for wheelchair users or to any access passage from or to any service door or intercommunication staircase and any area for standing passengers; it does not include:"

Annex 3, paragraph 7.6.2.3., amend to read;

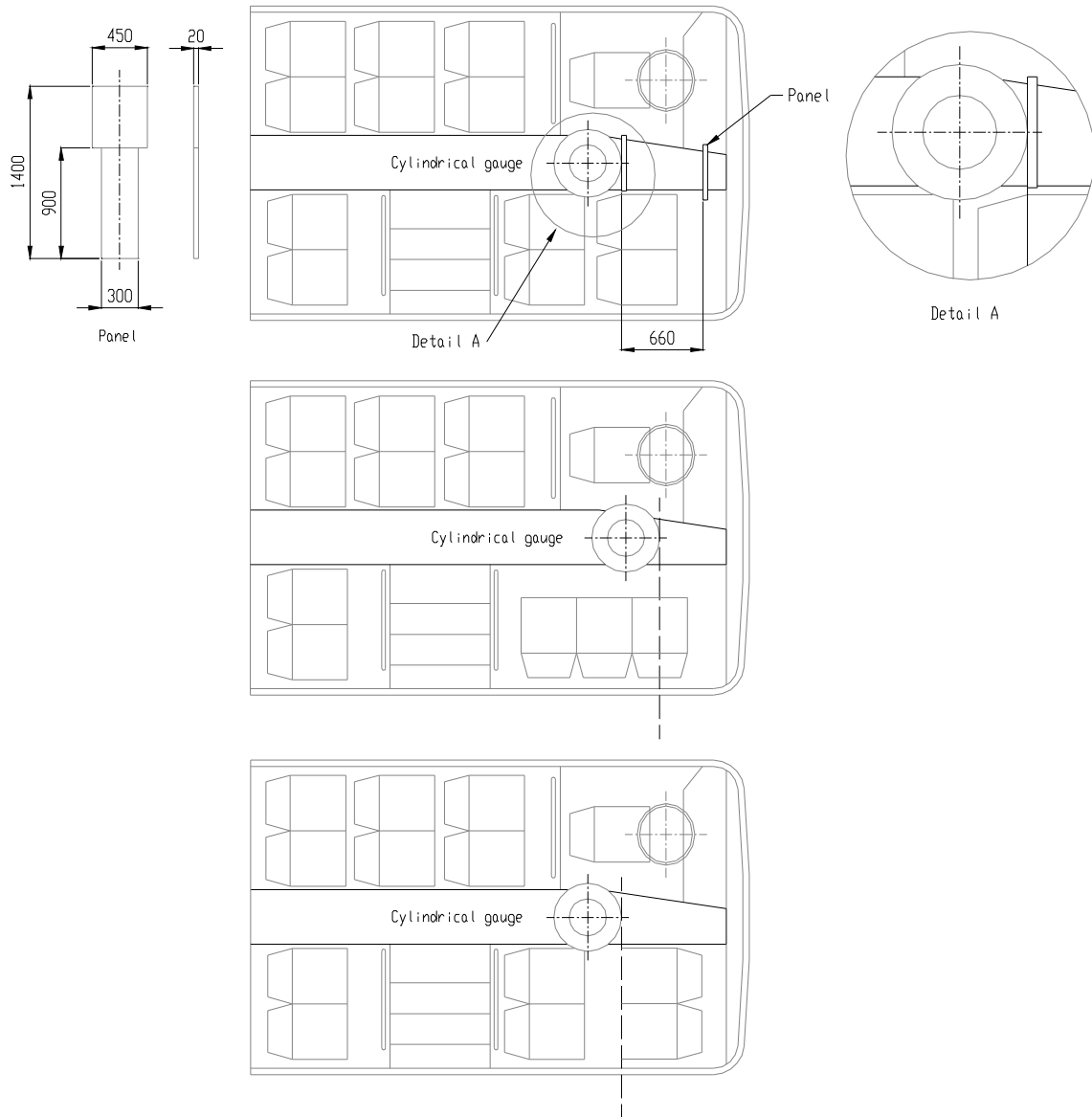
"7.6.2.3. The exits (on each deck in the case of a double-deck vehicle) shall be placed in such a way that their number on each of the two sides of the vehicle is substantially the same. (This shall not imply the need to provide additional exits over and above the number specified in paragraph 7.6.1.). Any exits in excess of the required minimum number need not be substantially balanced on each of the two sides."

Annex 4, Figure 7, amend to read:

"Figure 7

FORWARD LIMITATION OF THE GANGWAY

(see Annex 3, paragraph 7.7.5.1.1.1.)



Annex 8, paragraph 3.6.1., amend to read:

"3.6.1. For each wheelchair user provided for in the passenger compartment there shall be a special area at least 750 mm wide and 1300 mm long. The longitudinal plane of the special area shall be parallel to the longitudinal plane of the vehicle and the floor surface of the special area shall be slip resistant and the maximum slope in any direction shall not exceed 5 per cent. In the case of a rearward facing wheelchair complying with the requirements specified in paragraph 3.8.4., the slope in the longitudinal direction shall not exceed 8 per cent provided that this slope inclines upwards from the front end to the rear end of the special area.

In the case of a wheelchair space designed for a forward facing wheelchair, the top of preceding seat-backs may intrude into the wheelchair space if a clear space is provided as shown in Annex 4, Figure 22."
