

The French Continental Shelf

**Partial Submission
to the Commission on the Limits of the Continental Shelf
pursuant to Article 76, paragraph 8
of the United Nations Convention on the Law of the Sea
in respect of La Réunion Island and Saint-Paul and Amsterdam Islands**

Part 1

**Executive Summary
English Translation of the French Original**

| | | | | | | | | | | |
|---|--|---|--|--|--|--|--|--|--|--|
| | | | | | | | Piton de la Fournaise, La Réunion Island skyrock.com | | | |
| Saint-Paul Island www.taaf.fr | | | | | | | | | | |
| | | L'Atalante, oceanographic research vessel of Ifremer | | | | | | | | |
| Satellite image of La Réunion Island ile-de-la-reunion.info | | | | | | | | | | |
| | | | | | | | Sea lion www.taaf.fr | | | |

Table of Contents

1 Introduction..... 1

2 The continental shelf..... 1

3 Specific provisions invoked to support this partial submission..... 2

4 Absence of disputes 2

5 Description of the outer limits of the continental shelf..... 3

 5.1 La Réunion..... 3

 5.2 Saint-Paul and Amsterdam 4

6 State bodies responsible for the preparation of this partial continental shelf submission 5

Annex 1 : Outer limit of the continental shelf in the area of La Réunion 6

Annex 2 : Outer limit of the continental shelf in the area of Saint-Paul and Amsterdam 11

List of Figures

| | |
|--|---|
| Figure 1 : La Réunion and Saint-Paul and Amsterdam are located in the Indian Ocean..... | 2 |
| Figure 2 : Detailed map of the outer limit of the continental shelf in the area of La Réunion..... | 3 |
| Figure 3 : Detailed map of the outer limit of the continental shelf in the area of Saint-Paul and Amsterdam..... | 5 |

List of Tables

| | |
|--|----|
| Table 1 : List of coordinates defining the outer limit of the continental shelf in the area of La Réunion..... | 6 |
| Table 2 : List of coordinates defining the outer limit of the continental shelf in the area of Saint-Paul and Amsterdam..... | 11 |

1 Introduction

This submission to the Commission on the Limits of the Continental Shelf is made by the Government of the French Republic pursuant to Article 76, paragraph 8, and article 4 of Annex II of the United Nations Convention on the Law of the Sea, in support of the establishment of the outer limits of the continental shelf beyond the 200 nautical miles from the baselines from which the breadth of the territorial sea is measured, in the area of the overseas Department of La Réunion Island (hereafter “La Réunion”), and of the District of the Saint-Paul and Amsterdam Islands (hereafter “Saint-Paul and Amsterdam”).

This submission is a partial submission, as was the submission presented jointly with Spain, Ireland and the United Kingdom of Great Britain and Northern Ireland on the 19th of May 2006, for the region of the Celtic Sea and the Bay of Biscay, the submission presented on the 22nd of May 2007, for the regions offshore French Guiana and New Caledonia, the submission concerning the Kerguelen Islands and the French Antilles lodged on the 5th of February 2009, and the submission presented jointly with South Africa for the area surrounding the Prince Edward Islands and the Crozet Archipelago in May 2009.

2 The continental shelf

The present submission deals only with the outer limit of the continental shelf in the areas of La Réunion and of Saint-Paul and Amsterdam. In accordance with paragraph 3 of Annex I of the Rules and Procedures, submissions for other parts of the French continental shelf will be made at a later stage, without prejudging the resolution of pending questions related to the determination of limits in those parts of the continental shelf claimed by France and any other State.

The extension of the continental shelf beyond 200 nautical miles from the baselines of La Réunion is located in the Indian Ocean, in the southern part of the Mascarene Plateau, to the east of Madagascar. The Saint-Paul and Amsterdam Islands are located in the southeast Indian Ocean, on the South East Indian Ridge (Figure 1).

The French Continental Shelf

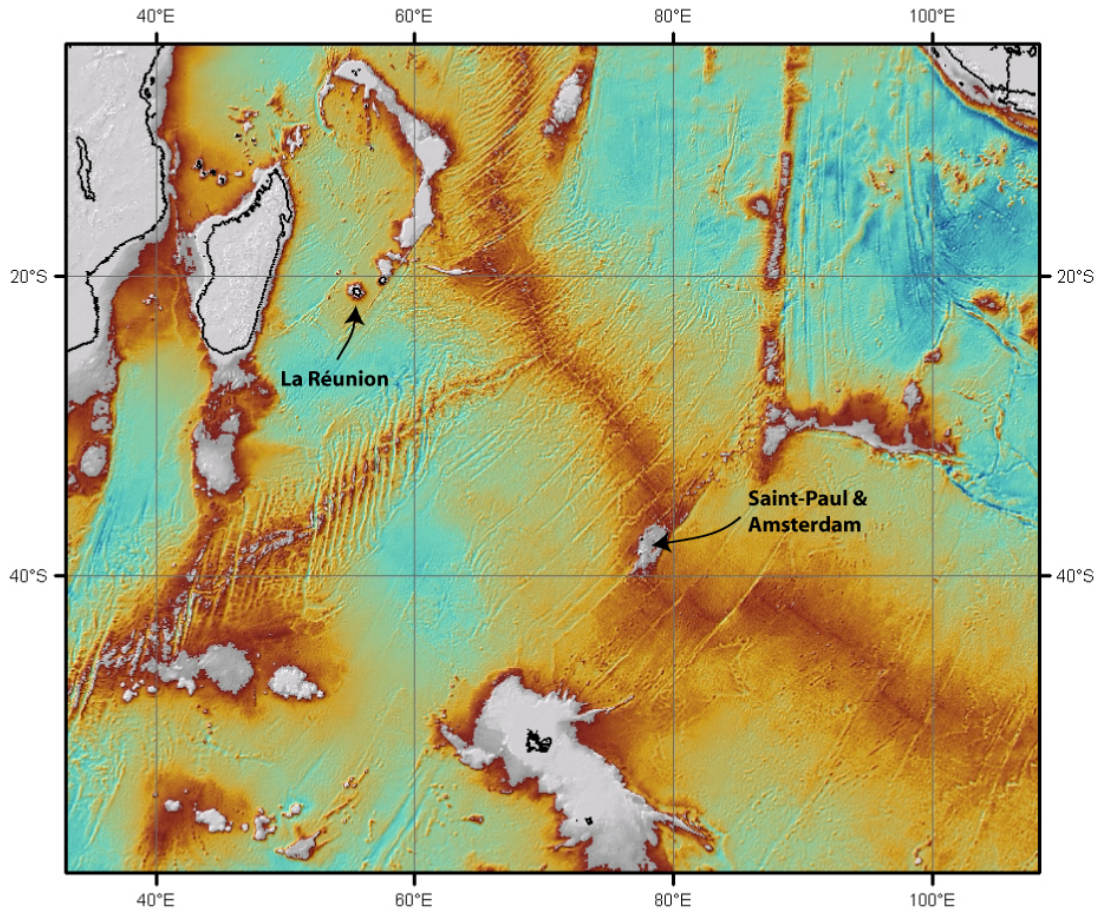


Figure 1 : La Réunion and Saint-Paul and Amsterdam are located in the Indian Ocean.

(Projection : Mercator. Satellite derived bathymetry).

3 Specific provisions invoked to support this partial submission

The outer limit in the area of this submission is based on the provisions of Article 76, paragraphs 1, 4 (a)(ii), 4 (b), 5, 6 and 7 of the United Nations Convention on the Law of the Sea.

4 Absence of disputes

In accordance with paragraph 2(a) of Annex I to the Rules of Procedure of the CLCS, France wishes to inform the Commission that the continental shelf in the areas concerned by this submission are not the subject of any dispute between France and any other State.

5 Description of the outer limits of the continental shelf

5.1 La Réunion

In the area of La Réunion Island, 136 fixed points were determined using the Hedberg formula and one fixed point is located on the 200 M limit (Figure 2 and Table 1). The distance between consecutive fixed points does not exceed 60 nautical miles. The fixed points are located at a distance not exceeding 350 M from the baselines from which the breadth of the territorial sea of La Réunion is measured.

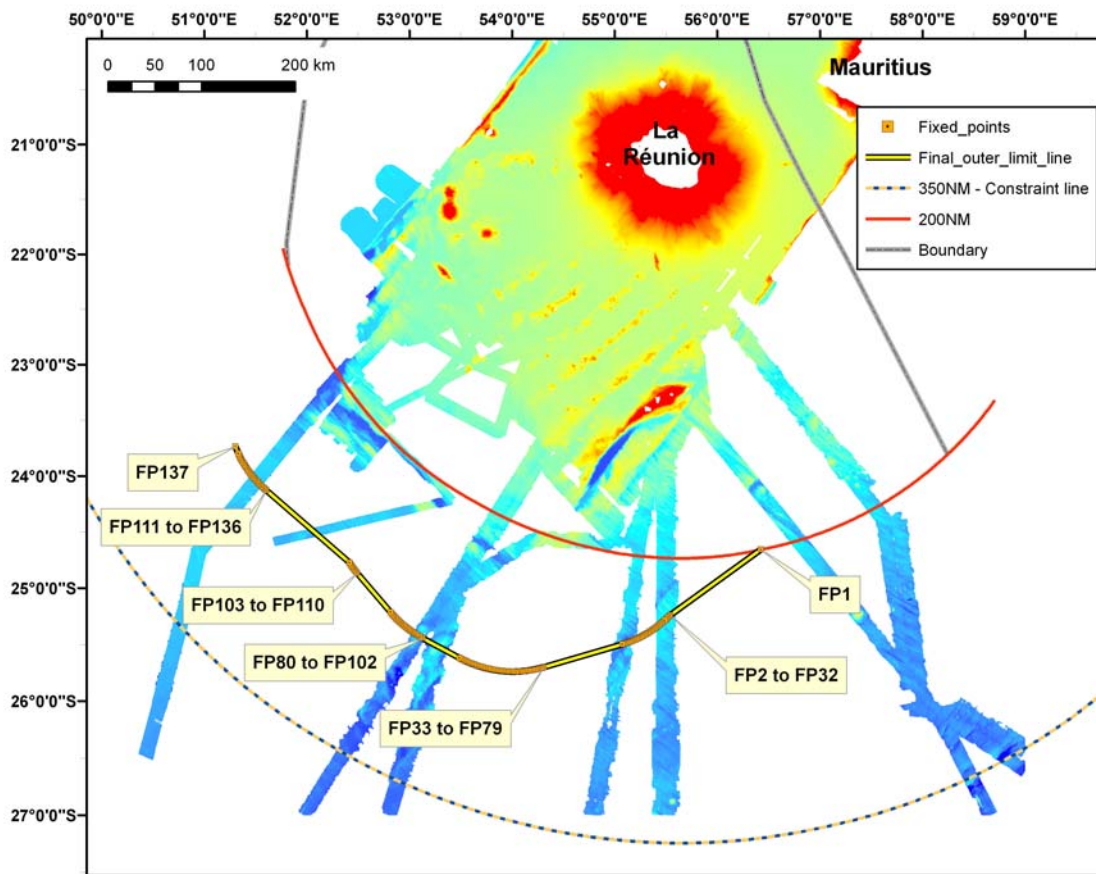
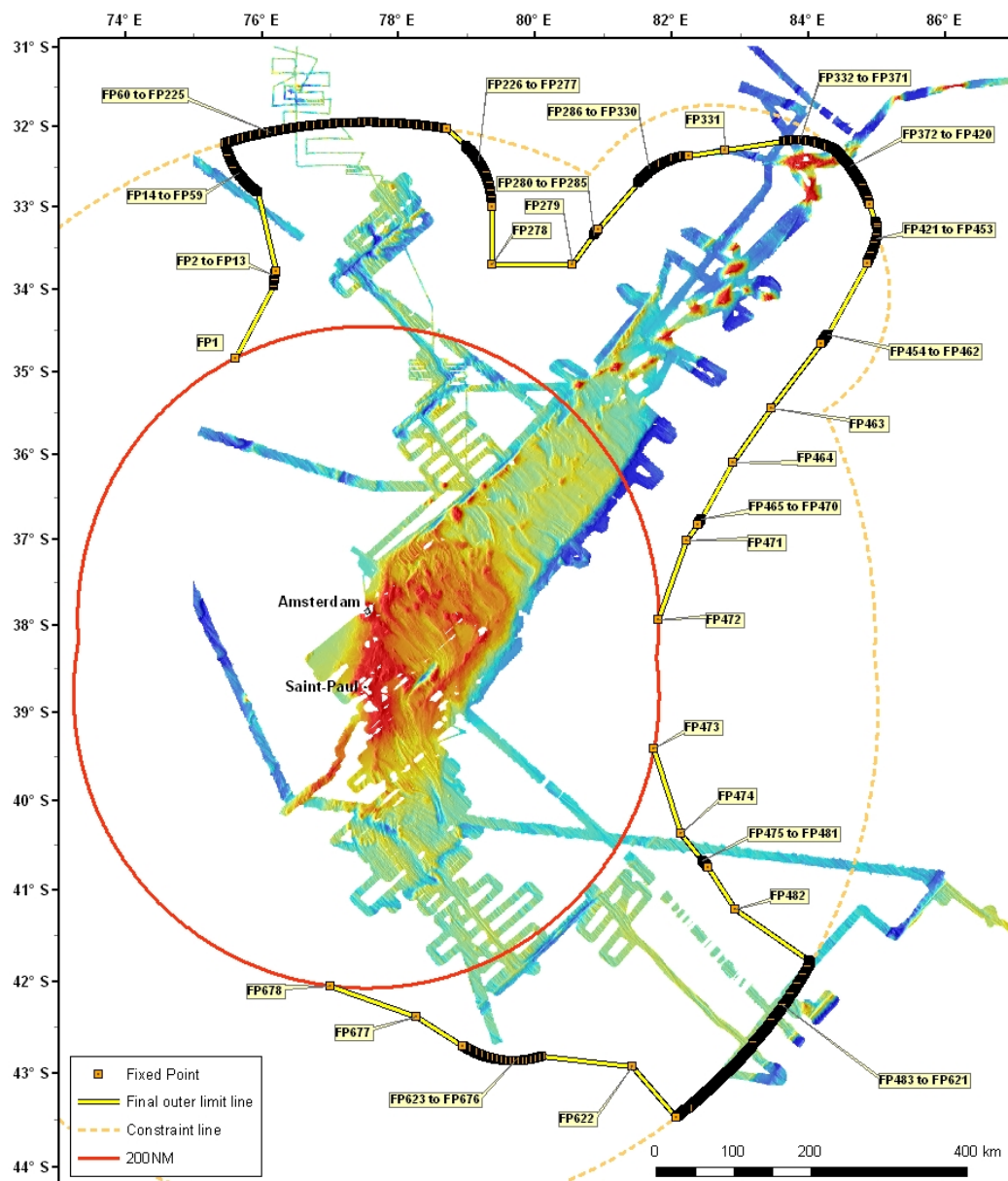


Figure 2 : Detailed map of the outer limit of the continental shelf in the area of La Réunion. (Projection : Mercator; Multibeam bathymetry).

5.2 Saint-Paul and Amsterdam

In the area of Saint-Paul and Amsterdam, the outer limit of the continental shelf consists of 678 fixed points: 320 fixed points determined according to the Hedberg formula, 354 points located on the constraint line and 4 points located on the 200 M limit (Figure 3 and Table 1). The distance between consecutive fixed points does not exceed 60 nautical miles. These fixed points do not exceed 350 nautical miles from the baselines from which the breadth of the territorial sea of the Saint-Paul and Amsterdam Islands is measured, or do not exceed 100 nautical miles from the 2 500 metre isobath.



6 State bodies responsible for the preparation of this partial continental shelf submission

EXTRAPLAC is a national multi-year program dedicated to the continental shelf extension, funded by the French Government. This submission, as well as all maps, figures, appendices and data bases were prepared by a consortium coordinated by the General Secretariat for the Sea (SGMer) and constituted of the French Research Institute for the Exploitation of the Sea (Ifremer), the Hydrographic and Oceanographic Service of the Navy (SHOM), the French Petroleum Institute (IFP), and the French Polar Institute Paul-Emile Victor (IPEV).

Figure 3 : Detailed map of the outer limit of the continental shelf in the area of Saint-Paul and Amsterdam. (Projection : Mercator; Multibeam bathymetry).

←

The French Continental Shelf

Annex 1 : Outer limit of the continental shelf in the area of La Réunion

Table 1 : List of coordinates defining the outer limit of the continental shelf in the area of La Réunion.

All coordinates relate to the WGS 84 geodetic reference system.

| FP | Latitude °S | Longitude °E | Method Article 76 | From FP | To FP | Distance (m) | Distance (Miles) |
|----|-------------|--------------|-------------------|---------|-------|--------------|------------------|
| 1 | 24.6560970 | 56.4240836 | (1) | | | | |
| 2 | 25.2400287 | 55.5407634 | 4 (a) (ii) | 1 | 2 | 110190 | 59.498 |
| 3 | 25.2518915 | 55.5278119 | 4 (a) (ii) | 2 | 3 | 1852 | 1.000 |
| 4 | 25.2635549 | 55.5146426 | 4 (a) (ii) | 3 | 4 | 1852 | 1.000 |
| 5 | 25.2750171 | 55.5012600 | 4 (a) (ii) | 4 | 5 | 1852 | 1.000 |
| 6 | 25.2862741 | 55.4876662 | 4 (a) (ii) | 5 | 6 | 1852 | 1.000 |
| 7 | 25.2973197 | 55.4738636 | 4 (a) (ii) | 6 | 7 | 1852 | 1.000 |
| 8 | 25.3081561 | 55.4598611 | 4 (a) (ii) | 7 | 8 | 1852 | 1.000 |
| 9 | 25.3187751 | 55.4456565 | 4 (a) (ii) | 8 | 9 | 1852 | 1.000 |
| 10 | 25.3291789 | 55.4312588 | 4 (a) (ii) | 9 | 10 | 1852 | 1.000 |
| 11 | 25.3393593 | 55.4166701 | 4 (a) (ii) | 10 | 11 | 1852 | 1.000 |
| 12 | 25.3493164 | 55.4018928 | 4 (a) (ii) | 11 | 12 | 1852 | 1.000 |
| 13 | 25.3590482 | 55.3869337 | 4 (a) (ii) | 12 | 13 | 1852 | 1.000 |
| 14 | 25.3685486 | 55.3717948 | 4 (a) (ii) | 13 | 14 | 1852 | 1.000 |
| 15 | 25.3778178 | 55.3564808 | 4 (a) (ii) | 14 | 15 | 1852 | 1.000 |
| 16 | 25.3868536 | 55.3409983 | 4 (a) (ii) | 15 | 16 | 1852 | 1.000 |
| 17 | 25.3956501 | 55.3253496 | 4 (a) (ii) | 16 | 17 | 1852 | 1.000 |
| 18 | 25.4042073 | 55.3095393 | 4 (a) (ii) | 17 | 18 | 1852 | 1.000 |
| 19 | 25.4125232 | 55.2935717 | 4 (a) (ii) | 18 | 19 | 1852 | 1.000 |
| 20 | 25.4205938 | 55.2774515 | 4 (a) (ii) | 19 | 20 | 1852 | 1.000 |
| 21 | 25.4284171 | 55.261183 | 4 (a) (ii) | 20 | 21 | 1852 | 1.000 |
| 22 | 25.4359911 | 55.244773 | 4 (a) (ii) | 21 | 22 | 1852 | 1.000 |
| 23 | 25.4433158 | 55.2282238 | 4 (a) (ii) | 22 | 23 | 1852 | 1.000 |
| 24 | 25.4503852 | 55.2115398 | 4 (a) (ii) | 23 | 24 | 1852 | 1.000 |
| 25 | 25.4571994 | 55.1947256 | 4 (a) (ii) | 24 | 25 | 1852 | 1.000 |
| 26 | 25.4637562 | 55.1777879 | 4 (a) (ii) | 25 | 26 | 1852 | 1.000 |

The French Continental Shelf

| FP | Latitude °S | Longitude °E | Method Article 76 | From FP | To FP | Distance (m) | Distance (Miles) |
|----|-------------|--------------|-------------------|---------|-------|--------------|------------------|
| 27 | 25.4700558 | 55.1607311 | 4 (a) (ii) | 26 | 27 | 1852 | 1.000 |
| 28 | 25.4760921 | 55.1435576 | 4 (a) (ii) | 27 | 28 | 1852 | 1.000 |
| 29 | 25.4818672 | 55.1262740 | 4 (a) (ii) | 28 | 29 | 1852 | 1.000 |
| 30 | 25.4873791 | 55.1088871 | 4 (a) (ii) | 29 | 30 | 1852 | 1.000 |
| 31 | 25.4926237 | 55.0913992 | 4 (a) (ii) | 30 | 31 | 1852 | 1.000 |
| 32 | 25.4976010 | 55.0738146 | 4 (a) (ii) | 31 | 32 | 1852 | 1.000 |
| 33 | 25.6996595 | 54.3085264 | 4 (a) (ii) | 32 | 33 | 80069 | 43.234 |
| 34 | 25.7040991 | 54.2907375 | 4 (a) (ii) | 33 | 34 | 1852 | 1.000 |
| 35 | 25.7082659 | 54.2728677 | 4 (a) (ii) | 34 | 35 | 1852 | 1.000 |
| 36 | 25.7121600 | 54.2549239 | 4 (a) (ii) | 35 | 36 | 1852 | 1.000 |
| 37 | 25.7157814 | 54.2369104 | 4 (a) (ii) | 36 | 37 | 1852 | 1.000 |
| 38 | 25.7191280 | 54.2188296 | 4 (a) (ii) | 37 | 38 | 1852 | 1.000 |
| 39 | 25.7221998 | 54.2006904 | 4 (a) (ii) | 38 | 39 | 1852 | 1.000 |
| 40 | 25.7249929 | 54.1824972 | 4 (a) (ii) | 39 | 40 | 1852 | 1.000 |
| 41 | 25.7275113 | 54.1642524 | 4 (a) (ii) | 40 | 41 | 1852 | 1.000 |
| 42 | 25.7297510 | 54.1459627 | 4 (a) (ii) | 41 | 42 | 1852 | 1.000 |
| 43 | 25.7317099 | 54.1276349 | 4 (a) (ii) | 42 | 43 | 1852 | 1.000 |
| 44 | 25.7333921 | 54.1092733 | 4 (a) (ii) | 43 | 44 | 1852 | 1.000 |
| 45 | 25.7347936 | 54.0908825 | 4 (a) (ii) | 44 | 45 | 1852 | 1.000 |
| 46 | 25.7359144 | 54.0724693 | 4 (a) (ii) | 45 | 46 | 1852 | 1.000 |
| 47 | 25.7367565 | 54.0540359 | 4 (a) (ii) | 46 | 47 | 1852 | 1.000 |
| 48 | 25.7373159 | 54.0355912 | 4 (a) (ii) | 47 | 48 | 1852 | 1.000 |
| 49 | 25.7375966 | 54.0171376 | 4 (a) (ii) | 48 | 49 | 1852 | 1.000 |
| 50 | 25.7375945 | 53.9986795 | 4 (a) (ii) | 49 | 50 | 1852 | 1.000 |
| 51 | 25.7373118 | 53.9802258 | 4 (a) (ii) | 50 | 51 | 1852 | 1.000 |
| 52 | 25.7367504 | 53.9617812 | 4 (a) (ii) | 51 | 52 | 1852 | 1.000 |
| 53 | 25.7359063 | 53.9433477 | 4 (a) (ii) | 52 | 53 | 1852 | 1.000 |
| 54 | 25.7347814 | 53.9249345 | 4 (a) (ii) | 53 | 54 | 1852 | 1.000 |
| 55 | 25.7333779 | 53.9065437 | 4 (a) (ii) | 54 | 55 | 1852 | 1.000 |
| 56 | 25.7316936 | 53.8881822 | 4 (a) (ii) | 55 | 56 | 1852 | 1.000 |
| 57 | 25.7297306 | 53.8698543 | 4 (a) (ii) | 56 | 57 | 1852 | 1.000 |
| 58 | 25.7274889 | 53.8515669 | 4 (a) (ii) | 57 | 58 | 1852 | 1.000 |
| 59 | 25.7249705 | 53.8333221 | 4 (a) (ii) | 58 | 59 | 1852 | 1.000 |
| 60 | 25.7221734 | 53.8151289 | 4 (a) (ii) | 59 | 60 | 1852 | 1.000 |
| 61 | 25.7190995 | 53.7969897 | 4 (a) (ii) | 60 | 61 | 1852 | 1.000 |
| 62 | 25.7157509 | 53.7789111 | 4 (a) (ii) | 61 | 62 | 1852 | 1.000 |

The French Continental Shelf

| FP | Latitude °S | Longitude °E | Method Article 76 | From FP | To FP | Distance (m) | Distance (Miles) |
|----|-------------|--------------|-------------------|---------|-------|--------------|------------------|
| 63 | 25.7121275 | 53.7608976 | 4 (a) (ii) | 62 | 63 | 1852 | 1.000 |
| 64 | 25.7082293 | 53.7429538 | 4 (a) (ii) | 63 | 64 | 1852 | 1.000 |
| 65 | 25.7040604 | 53.7250863 | 4 (a) (ii) | 64 | 65 | 1852 | 1.000 |
| 66 | 25.6996188 | 53.7072974 | 4 (a) (ii) | 65 | 66 | 1852 | 1.000 |
| 67 | 25.6949083 | 53.6895961 | 4 (a) (ii) | 66 | 67 | 1852 | 1.000 |
| 68 | 25.6899270 | 53.6719846 | 4 (a) (ii) | 67 | 68 | 1852 | 1.000 |
| 69 | 25.6846810 | 53.6544675 | 4 (a) (ii) | 68 | 69 | 1852 | 1.000 |
| 70 | 25.6791661 | 53.6370537 | 4 (a) (ii) | 69 | 70 | 1852 | 1.000 |
| 71 | 25.6733905 | 53.6197431 | 4 (a) (ii) | 70 | 71 | 1852 | 1.000 |
| 72 | 25.6673500 | 53.6025426 | 4 (a) (ii) | 71 | 72 | 1852 | 1.000 |
| 73 | 25.6610486 | 53.5854589 | 4 (a) (ii) | 72 | 73 | 1852 | 1.000 |
| 74 | 25.6544884 | 53.5684942 | 4 (a) (ii) | 73 | 74 | 1852 | 1.000 |
| 75 | 25.6476714 | 53.5516553 | 4 (a) (ii) | 74 | 75 | 1852 | 1.000 |
| 76 | 25.6405995 | 53.5349444 | 4 (a) (ii) | 75 | 76 | 1852 | 1.000 |
| 77 | 25.6332727 | 53.5183682 | 4 (a) (ii) | 76 | 77 | 1852 | 1.000 |
| 78 | 25.6256950 | 53.5019336 | 4 (a) (ii) | 77 | 78 | 1852 | 1.000 |
| 79 | 25.6178684 | 53.4856404 | 4 (a) (ii) | 78 | 79 | 1852 | 1.000 |
| 80 | 25.4433811 | 53.1266107 | 4 (a) (ii) | 79 | 80 | 40938 | 22.105 |
| 81 | 25.435308 | 53.1104882 | 4 (a) (ii) | 80 | 81 | 1852 | 1.000 |
| 82 | 25.4269916 | 53.0945206 | 4 (a) (ii) | 81 | 82 | 1852 | 1.000 |
| 83 | 25.4184319 | 53.078708 | 4 (a) (ii) | 82 | 83 | 1852 | 1.000 |
| 84 | 25.4096330 | 53.0630571 | 4 (a) (ii) | 83 | 84 | 1852 | 1.000 |
| 85 | 25.4005969 | 53.0475724 | 4 (a) (ii) | 84 | 85 | 1852 | 1.000 |
| 86 | 25.3913254 | 53.0322584 | 4 (a) (ii) | 85 | 86 | 1852 | 1.000 |
| 87 | 25.3818206 | 53.0171195 | 4 (a) (ii) | 86 | 87 | 1852 | 1.000 |
| 88 | 25.3720886 | 53.0021581 | 4 (a) (ii) | 87 | 88 | 1852 | 1.000 |
| 89 | 25.3621294 | 52.9873808 | 4 (a) (ii) | 88 | 89 | 1852 | 1.000 |
| 90 | 25.3519448 | 52.9727899 | 4 (a) (ii) | 89 | 90 | 1852 | 1.000 |
| 91 | 25.3415409 | 52.9583922 | 4 (a) (ii) | 90 | 91 | 1852 | 1.000 |
| 92 | 25.3309199 | 52.9441876 | 4 (a) (ii) | 91 | 92 | 1852 | 1.000 |
| 93 | 25.3200815 | 52.9301828 | 4 (a) (ii) | 92 | 93 | 1852 | 1.000 |
| 94 | 25.3090339 | 52.9163802 | 4 (a) (ii) | 93 | 94 | 1852 | 1.000 |
| 95 | 25.2977750 | 52.9027865 | 4 (a) (ii) | 94 | 95 | 1852 | 1.000 |
| 96 | 25.2863109 | 52.8894016 | 4 (a) (ii) | 95 | 96 | 1852 | 1.000 |
| 97 | 25.2746455 | 52.8762323 | 4 (a) (ii) | 96 | 97 | 1852 | 1.000 |
| 98 | 25.2627809 | 52.8632808 | 4 (a) (ii) | 97 | 98 | 1852 | 1.000 |

The French Continental Shelf

| FP | Latitude °S | Longitude °E | Method Article 76 | From FP | To FP | Distance (m) | Distance (Miles) |
|-----|-------------|--------------|-------------------|---------|-------|--------------|------------------|
| 99 | 25.2507212 | 52.8505517 | 4 (a) (ii) | 98 | 99 | 1852 | 1.000 |
| 100 | 25.2384682 | 52.8380471 | 4 (a) (ii) | 99 | 100 | 1852 | 1.000 |
| 101 | 25.2260260 | 52.8257716 | 4 (a) (ii) | 100 | 101 | 1852 | 1.000 |
| 102 | 25.2133987 | 52.8137275 | 4 (a) (ii) | 101 | 102 | 1852 | 1.000 |
| 103 | 24.8660935 | 52.4909740 | 4 (a) (ii) | 102 | 103 | 50408 | 27.218 |
| 104 | 24.8532852 | 52.4791971 | 4 (a) (ii) | 103 | 104 | 1852 | 1.000 |
| 105 | 24.8402993 | 52.4676605 | 4 (a) (ii) | 104 | 105 | 1852 | 1.000 |
| 106 | 24.8271378 | 52.4563619 | 4 (a) (ii) | 105 | 106 | 1852 | 1.000 |
| 107 | 24.8138048 | 52.4453104 | 4 (a) (ii) | 106 | 107 | 1852 | 1.000 |
| 108 | 24.8003064 | 52.4345037 | 4 (a) (ii) | 107 | 108 | 1852 | 1.000 |
| 109 | 24.7866445 | 52.4239485 | 4 (a) (ii) | 108 | 109 | 1852 | 1.000 |
| 110 | 24.7728231 | 52.4136471 | 4 (a) (ii) | 109 | 110 | 1852 | 1.000 |
| 111 | 24.1287488 | 51.6042650 | 4 (a) (ii) | 110 | 111 | 108740 | 58.715 |
| 112 | 24.1177030 | 51.5905904 | 4 (a) (ii) | 111 | 112 | 1852 | 1.000 |
| 113 | 24.1064460 | 51.5771201 | 4 (a) (ii) | 112 | 113 | 1852 | 1.000 |
| 114 | 24.0949839 | 51.5638588 | 4 (a) (ii) | 113 | 114 | 1852 | 1.000 |
| 115 | 24.0833207 | 51.5508107 | 4 (a) (ii) | 114 | 115 | 1852 | 1.000 |
| 116 | 24.0714565 | 51.5379783 | 4 (a) (ii) | 115 | 116 | 1852 | 1.000 |
| 117 | 24.0593993 | 51.5253637 | 4 (a) (ii) | 116 | 117 | 1852 | 1.000 |
| 118 | 24.0471472 | 51.5129737 | 4 (a) (ii) | 117 | 118 | 1852 | 1.000 |
| 119 | 24.0347061 | 51.5008083 | 4 (a) (ii) | 118 | 119 | 1852 | 1.000 |
| 120 | 24.0220824 | 51.4888741 | 4 (a) (ii) | 119 | 120 | 1852 | 1.000 |
| 121 | 24.0092737 | 51.4771736 | 4 (a) (ii) | 120 | 121 | 1852 | 1.000 |
| 122 | 23.9962884 | 51.4657088 | 4 (a) (ii) | 121 | 122 | 1852 | 1.000 |
| 123 | 23.9831285 | 51.4544821 | 4 (a) (ii) | 122 | 123 | 1852 | 1.000 |
| 124 | 23.9697979 | 51.4435002 | 4 (a) (ii) | 123 | 124 | 1852 | 1.000 |
| 125 | 23.9562988 | 51.4327609 | 4 (a) (ii) | 124 | 125 | 1852 | 1.000 |
| 126 | 23.9426373 | 51.4222730 | 4 (a) (ii) | 125 | 126 | 1852 | 1.000 |
| 127 | 23.9288174 | 51.4120345 | 4 (a) (ii) | 126 | 127 | 1852 | 1.000 |
| 128 | 23.9148412 | 51.4020520 | 4 (a) (ii) | 127 | 128 | 1852 | 1.000 |
| 129 | 23.9007127 | 51.3923255 | 4 (a) (ii) | 128 | 129 | 1852 | 1.000 |
| 130 | 23.8864361 | 51.3828572 | 4 (a) (ii) | 129 | 130 | 1852 | 1.000 |
| 131 | 23.8720174 | 51.3736517 | 4 (a) (ii) | 130 | 131 | 1852 | 1.000 |
| 132 | 23.8574587 | 51.3647112 | 4 (a) (ii) | 131 | 132 | 1852 | 1.000 |
| 133 | 23.8427641 | 51.3560380 | 4 (a) (ii) | 132 | 133 | 1852 | 1.000 |
| 134 | 23.8279376 | 51.3476343 | 4 (a) (ii) | 133 | 134 | 1852 | 1.000 |

The French Continental Shelf

| FP | Latitude °S | Longitude °E | Method Article 76 | From FP | To FP | Distance (m) | Distance (Miles) |
|-----------|--------------------|---------------------|------------------------------|--------------------|------------------|-------------------------|-----------------------------|
| 135 | 23.8129855 | 51.3395000 | 4 (a) (ii) | 134 | 135 | 1852 | 1.000 |
| 136 | 23.7979096 | 51.3316420 | 4 (a) (ii) | 135 | 136 | 1852 | 1.000 |
| 137 | 23.7364599 | 51.3029858 | 4 (a) (ii) | 136 | 137 | 7406 | 3.999 |

The French Continental Shelf

Annex 2 : Outer limit of the continental shelf in the area of Saint-Paul and Amsterdam

Table 2 : List of coordinates defining the outer limit of the continental shelf in the area of Saint-Paul and Amsterdam.

All coordinates relate to the WGS 84 geodetic reference system.

| FP | Latitude °S | Longitude °E | Method Article 76 | From FP | To FP | Distance (m) | Distance (Miles) |
|----|-------------|--------------|-------------------|---------|-------|--------------|------------------|
| 1 | 34.8431674 | 75.6103620 | 1 | | | | |
| 2 | 33.9653753 | 76.1793212 | 4 (a) (ii) | 1 | 2 | 110535 | 59.68 |
| 3 | 33.9487085 | 76.1804756 | 4 (a) (ii) | 2 | 3 | 1852 | 1.00 |
| 4 | 33.9320589 | 76.1819645 | 4 (a) (ii) | 3 | 4 | 1852 | 1.00 |
| 5 | 33.9154322 | 76.1837836 | 4 (a) (ii) | 4 | 5 | 1852 | 1.00 |
| 6 | 33.8988323 | 76.1859328 | 4 (a) (ii) | 5 | 6 | 1852 | 1.00 |
| 7 | 33.8822665 | 76.1884144 | 4 (a) (ii) | 6 | 7 | 1852 | 1.00 |
| 8 | 33.8657350 | 76.1912239 | 4 (a) (ii) | 7 | 8 | 1852 | 1.00 |
| 9 | 33.8492470 | 76.1943635 | 4 (a) (ii) | 8 | 9 | 1852 | 1.00 |
| 10 | 33.8328027 | 76.1978310 | 4 (a) (ii) | 9 | 10 | 1852 | 1.00 |
| 11 | 33.8164096 | 76.2016242 | 4 (a) (ii) | 10 | 11 | 1852 | 1.00 |
| 12 | 33.8000733 | 76.2057429 | 4 (a) (ii) | 11 | 12 | 1852 | 1.00 |
| 13 | 33.7837939 | 76.2101851 | 4 (a) (ii) | 12 | 13 | 1852 | 1.00 |
| 14 | 32.8194605 | 75.9436123 | 4 (a) (ii) | 13 | 14 | 109798 | 59.29 |
| 15 | 32.8097148 | 75.9275527 | 4 (a) (ii) | 14 | 15 | 1852 | 1.00 |
| 16 | 32.7997424 | 75.9116929 | 4 (a) (ii) | 15 | 16 | 1852 | 1.00 |
| 17 | 32.7895469 | 75.8960353 | 4 (a) (ii) | 16 | 17 | 1852 | 1.00 |
| 18 | 32.7791301 | 75.8805865 | 4 (a) (ii) | 17 | 18 | 1852 | 1.00 |
| 19 | 32.7684958 | 75.8653466 | 4 (a) (ii) | 18 | 19 | 1852 | 1.00 |
| 20 | 32.7576458 | 75.8503223 | 4 (a) (ii) | 19 | 20 | 1852 | 1.00 |
| 21 | 32.7465857 | 75.8355180 | 4 (a) (ii) | 20 | 21 | 1852 | 1.00 |
| 22 | 32.7353154 | 75.8209384 | 4 (a) (ii) | 21 | 22 | 1852 | 1.00 |
| 23 | 32.7238406 | 75.8065855 | 4 (a) (ii) | 22 | 23 | 1852 | 1.00 |
| 24 | 32.7121630 | 75.7924663 | 4 (a) (ii) | 23 | 24 | 1852 | 1.00 |
| 25 | 32.7002863 | 75.7785828 | 4 (a) (ii) | 24 | 25 | 1852 | 1.00 |
| 26 | 32.6882144 | 75.7649374 | 4 (a) (ii) | 25 | 26 | 1852 | 1.00 |

The French Continental Shelf

| FP | Latitude °S | Longitude °E | Method Article 76 | From FP | To FP | Distance (m) | Distance (Miles) |
|----|-------------|--------------|-------------------|---------|-------|--------------|------------------|
| 27 | 32.6759509 | 75.7515345 | 4 (a) (ii) | 26 | 27 | 1852 | 1.00 |
| 28 | 32.6634976 | 75.7383809 | 4 (a) (ii) | 27 | 28 | 1852 | 1.00 |
| 29 | 32.6508602 | 75.7254766 | 4 (a) (ii) | 28 | 29 | 1852 | 1.00 |
| 30 | 32.6380423 | 75.7128284 | 4 (a) (ii) | 29 | 30 | 1852 | 1.00 |
| 31 | 32.6250440 | 75.7004384 | 4 (a) (ii) | 30 | 31 | 1852 | 1.00 |
| 32 | 32.6118746 | 75.6883066 | 4 (a) (ii) | 31 | 32 | 1852 | 1.00 |
| 33 | 32.5985321 | 75.6764421 | 4 (a) (ii) | 32 | 33 | 1852 | 1.00 |
| 34 | 32.5850241 | 75.6648449 | 4 (a) (ii) | 33 | 34 | 1852 | 1.00 |
| 35 | 32.5713543 | 75.6535171 | 4 (a) (ii) | 34 | 35 | 1852 | 1.00 |
| 36 | 32.5575246 | 75.6424633 | 4 (a) (ii) | 35 | 36 | 1852 | 1.00 |
| 37 | 32.5435405 | 75.6316880 | 4 (a) (ii) | 36 | 37 | 1852 | 1.00 |
| 38 | 32.5294039 | 75.6211935 | 4 (a) (ii) | 37 | 38 | 1852 | 1.00 |
| 39 | 32.5151205 | 75.6109796 | 4 (a) (ii) | 38 | 39 | 1852 | 1.00 |
| 40 | 32.5006958 | 75.6010532 | 4 (a) (ii) | 39 | 40 | 1852 | 1.00 |
| 41 | 32.4861318 | 75.5914121 | 4 (a) (ii) | 40 | 41 | 1852 | 1.00 |
| 42 | 32.4714321 | 75.5820651 | 4 (a) (ii) | 41 | 42 | 1852 | 1.00 |
| 43 | 32.4566005 | 75.5730101 | 4 (a) (ii) | 42 | 43 | 1852 | 1.00 |
| 44 | 32.4416445 | 75.5642493 | 4 (a) (ii) | 43 | 44 | 1852 | 1.00 |
| 45 | 32.4265642 | 75.5557871 | 4 (a) (ii) | 44 | 45 | 1852 | 1.00 |
| 46 | 32.4113670 | 75.5476259 | 4 (a) (ii) | 45 | 46 | 1852 | 1.00 |
| 47 | 32.3960567 | 75.5397679 | 4 (a) (ii) | 46 | 47 | 1852 | 1.00 |
| 48 | 32.3806371 | 75.5322131 | 4 (a) (ii) | 47 | 48 | 1852 | 1.00 |
| 49 | 32.3651119 | 75.5249637 | 4 (a) (ii) | 48 | 49 | 1852 | 1.00 |
| 50 | 32.3494848 | 75.5180242 | 4 (a) (ii) | 49 | 50 | 1852 | 1.00 |
| 51 | 32.3337616 | 75.5113946 | 4 (a) (ii) | 50 | 51 | 1852 | 1.00 |
| 52 | 32.3179480 | 75.5050750 | 4 (a) (ii) | 51 | 52 | 1852 | 1.00 |
| 53 | 32.3020457 | 75.4990720 | 4 (a) (ii) | 52 | 53 | 1852 | 1.00 |
| 54 | 32.2860604 | 75.4933812 | 4 (a) (ii) | 53 | 54 | 1852 | 1.00 |
| 55 | 32.2699960 | 75.4880070 | 4 (a) (ii) | 54 | 55 | 1852 | 1.00 |
| 56 | 32.2538582 | 75.4829517 | 4 (a) (ii) | 55 | 56 | 1852 | 1.00 |
| 57 | 32.2376506 | 75.4782154 | 4 (a) (ii) | 56 | 57 | 1852 | 1.00 |
| 58 | 32.2213790 | 75.4737979 | 4 (a) (ii) | 57 | 58 | 1852 | 1.00 |
| 59 | 32.2064487 | 75.4700542 | 4 (a) (ii) | 58 | 59 | 1693 | 0.91 |
| 60 | 32.1999946 | 75.4962490 | 5 | 59 | 60 | 2571 | 1.39 |
| 61 | 32.1954097 | 75.5150979 | 5 | 60 | 61 | 1848 | 1.00 |
| 62 | 32.1908647 | 75.5339648 | 5 | 61 | 62 | 1848 | 1.00 |

The French Continental Shelf

| FP | Latitude °S | Longitude °E | Method Article 76 | From FP | To FP | Distance (m) | Distance (Miles) |
|----|-------------|--------------|-------------------|---------|-------|--------------|------------------|
| 63 | 32.1863671 | 75.5528384 | 5 | 62 | 63 | 1848 | 1.00 |
| 64 | 32.1819076 | 75.5717300 | 5 | 63 | 64 | 1848 | 1.00 |
| 65 | 32.1774936 | 75.5906350 | 5 | 64 | 65 | 1848 | 1.00 |
| 66 | 32.1731215 | 75.6095535 | 5 | 65 | 66 | 1848 | 1.00 |
| 67 | 32.1687912 | 75.6284811 | 5 | 66 | 67 | 1848 | 1.00 |
| 68 | 32.1645084 | 75.6474243 | 5 | 67 | 68 | 1848 | 1.00 |
| 69 | 32.1602636 | 75.6663787 | 5 | 68 | 69 | 1848 | 1.00 |
| 70 | 32.1560645 | 75.6853444 | 5 | 69 | 70 | 1848 | 1.00 |
| 71 | 32.1519072 | 75.7043303 | 5 | 70 | 71 | 1848 | 1.00 |
| 72 | 32.1477956 | 75.7233207 | 5 | 71 | 72 | 1848 | 1.00 |
| 73 | 32.1437220 | 75.7423245 | 5 | 72 | 73 | 1848 | 1.00 |
| 74 | 32.1373629 | 75.7721464 | 5 | 73 | 74 | 2900 | 1.57 |
| 75 | 32.1333366 | 75.7911547 | 5 | 74 | 75 | 1848 | 1.00 |
| 76 | 32.1293502 | 75.8101833 | 5 | 75 | 76 | 1848 | 1.00 |
| 77 | 32.1254077 | 75.8292186 | 5 | 76 | 77 | 1848 | 1.00 |
| 78 | 32.1215127 | 75.8482719 | 5 | 77 | 78 | 1848 | 1.00 |
| 79 | 32.1176578 | 75.8673296 | 5 | 78 | 79 | 1848 | 1.00 |
| 80 | 32.1138466 | 75.8864008 | 5 | 79 | 80 | 1848 | 1.00 |
| 81 | 32.1100773 | 75.9054856 | 5 | 80 | 81 | 1848 | 1.00 |
| 82 | 32.1063537 | 75.9245748 | 5 | 81 | 82 | 1848 | 1.00 |
| 83 | 32.1026720 | 75.9436774 | 5 | 82 | 83 | 1848 | 1.00 |
| 84 | 32.0990342 | 75.9627981 | 5 | 83 | 84 | 1848 | 1.00 |
| 85 | 32.0954363 | 75.9819187 | 5 | 84 | 85 | 1848 | 1.00 |
| 86 | 32.0918861 | 76.0010596 | 5 | 85 | 86 | 1848 | 1.00 |
| 87 | 32.0883779 | 76.0202049 | 5 | 86 | 87 | 1848 | 1.00 |
| 88 | 32.0849115 | 76.0393637 | 5 | 87 | 88 | 1848 | 1.00 |
| 89 | 32.0814928 | 76.0585270 | 5 | 88 | 89 | 1848 | 1.00 |
| 90 | 32.0781104 | 76.0777038 | 5 | 89 | 90 | 1848 | 1.00 |
| 91 | 32.0747813 | 76.0968851 | 5 | 90 | 91 | 1848 | 1.00 |
| 92 | 32.0714885 | 76.1160866 | 5 | 91 | 92 | 1848 | 1.00 |
| 93 | 32.0682433 | 76.1352881 | 5 | 92 | 93 | 1848 | 1.00 |
| 94 | 32.0650382 | 76.1545030 | 5 | 93 | 94 | 1848 | 1.00 |
| 95 | 32.0618769 | 76.1737270 | 5 | 94 | 95 | 1848 | 1.00 |
| 96 | 32.0587615 | 76.1929599 | 5 | 95 | 96 | 1848 | 1.00 |
| 97 | 32.0556899 | 76.2122041 | 5 | 96 | 97 | 1848 | 1.00 |
| 98 | 32.0526584 | 76.2314550 | 5 | 97 | 98 | 1848 | 1.00 |

The French Continental Shelf

| FP | Latitude °S | Longitude °E | Method Article 76 | From FP | To FP | Distance (m) | Distance (Miles) |
|-----|-------------|--------------|-------------------|---------|-------|--------------|------------------|
| 99 | 32.0496765 | 76.2507193 | 5 | 98 | 99 | 1848 | 1.00 |
| 100 | 32.0467347 | 76.2699882 | 5 | 99 | 100 | 1848 | 1.00 |
| 101 | 32.0438349 | 76.2892638 | 5 | 100 | 101 | 1848 | 1.00 |
| 102 | 32.0409828 | 76.3085439 | 5 | 101 | 102 | 1848 | 1.00 |
| 103 | 32.0381727 | 76.3278375 | 5 | 102 | 103 | 1848 | 1.00 |
| 104 | 32.0354046 | 76.3471445 | 5 | 103 | 104 | 1848 | 1.00 |
| 105 | 32.0326785 | 76.3664515 | 5 | 104 | 105 | 1848 | 1.00 |
| 106 | 32.0300001 | 76.3857698 | 5 | 105 | 106 | 1848 | 1.00 |
| 107 | 32.0273676 | 76.4050948 | 5 | 106 | 107 | 1848 | 1.00 |
| 108 | 32.0247733 | 76.4244311 | 5 | 107 | 108 | 1848 | 1.00 |
| 109 | 32.0222267 | 76.4437695 | 5 | 108 | 109 | 1848 | 1.00 |
| 110 | 32.0197260 | 76.4631193 | 5 | 109 | 110 | 1848 | 1.00 |
| 111 | 32.0172673 | 76.4824735 | 5 | 110 | 111 | 1848 | 1.00 |
| 112 | 32.0148526 | 76.5018366 | 5 | 111 | 112 | 1848 | 1.00 |
| 113 | 32.0124780 | 76.5212043 | 5 | 112 | 113 | 1848 | 1.00 |
| 114 | 32.0101511 | 76.5405832 | 5 | 113 | 114 | 1848 | 1.00 |
| 115 | 32.0078663 | 76.5599644 | 5 | 114 | 115 | 1848 | 1.00 |
| 116 | 32.0056235 | 76.5793568 | 5 | 115 | 116 | 1848 | 1.00 |
| 117 | 32.0034285 | 76.5987491 | 5 | 116 | 117 | 1848 | 1.00 |
| 118 | 32.0012813 | 76.6181550 | 5 | 117 | 118 | 1848 | 1.00 |
| 119 | 31.9991705 | 76.6375609 | 5 | 118 | 119 | 1848 | 1.00 |
| 120 | 31.9971055 | 76.6569779 | 5 | 119 | 120 | 1848 | 1.00 |
| 121 | 31.9950902 | 76.6763950 | 5 | 120 | 121 | 1848 | 1.00 |
| 122 | 31.9931093 | 76.6958256 | 5 | 121 | 122 | 1848 | 1.00 |
| 123 | 31.9911839 | 76.7152539 | 5 | 122 | 123 | 1848 | 1.00 |
| 124 | 31.9892929 | 76.7346912 | 5 | 123 | 124 | 1848 | 1.00 |
| 125 | 31.9874497 | 76.7541397 | 5 | 124 | 125 | 1848 | 1.00 |
| 126 | 31.9856486 | 76.7735882 | 5 | 125 | 126 | 1848 | 1.00 |
| 127 | 31.9838953 | 76.7930368 | 5 | 126 | 127 | 1848 | 1.00 |
| 128 | 31.9821840 | 76.8124965 | 5 | 127 | 128 | 1848 | 1.00 |
| 129 | 31.9805206 | 76.8319585 | 5 | 128 | 129 | 1848 | 1.00 |
| 130 | 31.9788993 | 76.8514295 | 5 | 129 | 130 | 1848 | 1.00 |
| 131 | 31.9773182 | 76.8709027 | 5 | 130 | 131 | 1848 | 1.00 |
| 132 | 31.9757867 | 76.8903760 | 5 | 131 | 132 | 1848 | 1.00 |
| 133 | 31.9742955 | 76.9098627 | 5 | 132 | 133 | 1848 | 1.00 |
| 134 | 31.9728483 | 76.9293471 | 5 | 133 | 134 | 1848 | 1.00 |

The French Continental Shelf

| FP | Latitude °S | Longitude °E | Method Article 76 | From FP | To FP | Distance (m) | Distance (Miles) |
|-----|-------------|--------------|-------------------|---------|-------|--------------|------------------|
| 135 | 31.9714470 | 76.9488383 | 5 | 134 | 135 | 1848 | 1.00 |
| 136 | 31.9700878 | 76.9683318 | 5 | 135 | 136 | 1848 | 1.00 |
| 137 | 31.9687764 | 76.9878297 | 5 | 136 | 137 | 1848 | 1.00 |
| 138 | 31.9675071 | 77.0073321 | 5 | 137 | 138 | 1848 | 1.00 |
| 139 | 31.9662799 | 77.0268368 | 5 | 138 | 139 | 1848 | 1.00 |
| 140 | 31.9651006 | 77.0463460 | 5 | 139 | 140 | 1848 | 1.00 |
| 141 | 31.9639691 | 77.0658619 | 5 | 140 | 141 | 1848 | 1.00 |
| 142 | 31.9628721 | 77.0853733 | 5 | 141 | 142 | 1848 | 1.00 |
| 143 | 31.9618306 | 77.1048959 | 5 | 142 | 143 | 1848 | 1.00 |
| 144 | 31.9608235 | 77.1244185 | 5 | 143 | 144 | 1848 | 1.00 |
| 145 | 31.9598662 | 77.1439412 | 5 | 144 | 145 | 1848 | 1.00 |
| 146 | 31.9589491 | 77.1634683 | 5 | 145 | 146 | 1848 | 1.00 |
| 147 | 31.9580799 | 77.1829977 | 5 | 146 | 147 | 1848 | 1.00 |
| 148 | 31.9572527 | 77.2025338 | 5 | 147 | 148 | 1848 | 1.00 |
| 149 | 31.9564735 | 77.2220677 | 5 | 148 | 149 | 1848 | 1.00 |
| 150 | 31.9557363 | 77.2416015 | 5 | 149 | 150 | 1848 | 1.00 |
| 151 | 31.9550470 | 77.2611444 | 5 | 150 | 151 | 1848 | 1.00 |
| 152 | 31.9543979 | 77.2806850 | 5 | 151 | 152 | 1848 | 1.00 |
| 153 | 31.9537929 | 77.3002256 | 5 | 152 | 153 | 1848 | 1.00 |
| 154 | 31.9532338 | 77.3197729 | 5 | 153 | 154 | 1848 | 1.00 |
| 155 | 31.9527187 | 77.3393203 | 5 | 154 | 155 | 1848 | 1.00 |
| 156 | 31.9522438 | 77.3588676 | 5 | 155 | 156 | 1848 | 1.00 |
| 157 | 31.9518168 | 77.3784149 | 5 | 156 | 157 | 1848 | 1.00 |
| 158 | 31.9514377 | 77.3979623 | 5 | 157 | 158 | 1848 | 1.00 |
| 159 | 31.9511007 | 77.4175141 | 5 | 158 | 159 | 1848 | 1.00 |
| 160 | 31.9508058 | 77.4370682 | 5 | 159 | 160 | 1848 | 1.00 |
| 161 | 31.9505588 | 77.4566223 | 5 | 160 | 161 | 1848 | 1.00 |
| 162 | 31.9503539 | 77.4761741 | 5 | 161 | 162 | 1848 | 1.00 |
| 163 | 31.9501893 | 77.4957282 | 5 | 162 | 163 | 1848 | 1.00 |
| 164 | 31.9500571 | 77.5180064 | 5 | 163 | 164 | 1848 | 1.00 |
| 165 | 31.9499901 | 77.5375605 | 5 | 164 | 165 | 1848 | 1.00 |
| 166 | 31.9499633 | 77.5593626 | 5 | 165 | 166 | 1848 | 1.00 |
| 167 | 31.9499844 | 77.5789144 | 5 | 166 | 167 | 1848 | 1.00 |
| 168 | 31.9500476 | 77.5984685 | 5 | 167 | 168 | 1848 | 1.00 |
| 169 | 31.9501586 | 77.6180293 | 5 | 168 | 169 | 1848 | 1.00 |
| 170 | 31.9503156 | 77.6375811 | 5 | 169 | 170 | 1848 | 1.00 |

The French Continental Shelf

| FP | Latitude °S | Longitude °E | Method Article 76 | From FP | To FP | Distance (m) | Distance (Miles) |
|-----|-------------|--------------|-------------------|---------|-------|--------------|------------------|
| 171 | 31.9505167 | 77.6571352 | 5 | 170 | 171 | 1848 | 1.00 |
| 172 | 31.9507579 | 77.6766893 | 5 | 171 | 172 | 1848 | 1.00 |
| 173 | 31.9510490 | 77.6962411 | 5 | 172 | 173 | 1848 | 1.00 |
| 174 | 31.9513803 | 77.7157885 | 5 | 173 | 174 | 1848 | 1.00 |
| 175 | 31.9517594 | 77.7353426 | 5 | 174 | 175 | 1848 | 1.00 |
| 176 | 31.9521806 | 77.7548899 | 5 | 175 | 176 | 1848 | 1.00 |
| 177 | 31.9526440 | 77.7744372 | 5 | 176 | 177 | 1848 | 1.00 |
| 178 | 31.9531553 | 77.7939846 | 5 | 177 | 178 | 1848 | 1.00 |
| 179 | 31.9537086 | 77.8135319 | 5 | 178 | 179 | 1848 | 1.00 |
| 180 | 31.9543079 | 77.8330725 | 5 | 179 | 180 | 1848 | 1.00 |
| 181 | 31.9549513 | 77.8526131 | 5 | 180 | 181 | 1848 | 1.00 |
| 182 | 31.9556406 | 77.8721537 | 5 | 181 | 182 | 1848 | 1.00 |
| 183 | 31.9563739 | 77.8916898 | 5 | 182 | 183 | 1848 | 1.00 |
| 184 | 31.9571474 | 77.9112237 | 5 | 183 | 184 | 1848 | 1.00 |
| 185 | 31.9579688 | 77.9307598 | 5 | 184 | 185 | 1848 | 1.00 |
| 186 | 31.9588342 | 77.9502869 | 5 | 185 | 186 | 1848 | 1.00 |
| 187 | 31.9597437 | 77.9698163 | 5 | 186 | 187 | 1848 | 1.00 |
| 188 | 31.9606972 | 77.9893390 | 5 | 187 | 188 | 1848 | 1.00 |
| 189 | 31.9616927 | 78.0088616 | 5 | 188 | 189 | 1848 | 1.00 |
| 190 | 31.9627362 | 78.0283842 | 5 | 189 | 190 | 1848 | 1.00 |
| 191 | 31.9638256 | 78.0479001 | 5 | 190 | 191 | 1848 | 1.00 |
| 192 | 31.9649532 | 78.0674093 | 5 | 191 | 192 | 1848 | 1.00 |
| 193 | 31.9661325 | 78.0869207 | 5 | 192 | 193 | 1848 | 1.00 |
| 194 | 31.9673501 | 78.1064254 | 5 | 193 | 194 | 1848 | 1.00 |
| 195 | 31.9686137 | 78.1259278 | 5 | 194 | 195 | 1848 | 1.00 |
| 196 | 31.9699193 | 78.1454257 | 5 | 195 | 196 | 1848 | 1.00 |
| 197 | 31.9712728 | 78.1649237 | 5 | 196 | 197 | 1848 | 1.00 |
| 198 | 31.9726683 | 78.1844149 | 5 | 197 | 198 | 1848 | 1.00 |
| 199 | 31.9741117 | 78.2039016 | 5 | 198 | 199 | 1848 | 1.00 |
| 200 | 31.9755972 | 78.2233793 | 5 | 199 | 200 | 1848 | 1.00 |
| 201 | 31.9771229 | 78.2428593 | 5 | 200 | 201 | 1848 | 1.00 |
| 202 | 31.9786983 | 78.2623325 | 5 | 201 | 202 | 1848 | 1.00 |
| 203 | 31.9803158 | 78.2818057 | 5 | 202 | 203 | 1848 | 1.00 |
| 204 | 31.9819792 | 78.3012655 | 5 | 203 | 204 | 1848 | 1.00 |
| 205 | 31.9836847 | 78.3207275 | 5 | 204 | 205 | 1848 | 1.00 |
| 206 | 31.9854323 | 78.3401805 | 5 | 205 | 206 | 1848 | 1.00 |

The French Continental Shelf

| FP | Latitude °S | Longitude °E | Method Article 76 | From FP | To FP | Distance (m) | Distance (Miles) |
|-----|-------------|--------------|-------------------|---------|-------|--------------|------------------|
| 207 | 31.9872296 | 78.3596290 | 5 | 206 | 207 | 1848 | 1.00 |
| 208 | 31.9890670 | 78.3790730 | 5 | 207 | 208 | 1848 | 1.00 |
| 209 | 31.9909466 | 78.3985148 | 5 | 208 | 209 | 1848 | 1.00 |
| 210 | 31.9928739 | 78.4179431 | 5 | 209 | 210 | 1848 | 1.00 |
| 211 | 31.9948414 | 78.4373737 | 5 | 210 | 211 | 1848 | 1.00 |
| 212 | 31.9968586 | 78.4567908 | 5 | 211 | 212 | 1848 | 1.00 |
| 213 | 31.9989178 | 78.4762079 | 5 | 212 | 213 | 1848 | 1.00 |
| 214 | 32.0010173 | 78.4956205 | 5 | 213 | 214 | 1848 | 1.00 |
| 215 | 32.0031664 | 78.5150196 | 5 | 214 | 215 | 1848 | 1.00 |
| 216 | 32.0053556 | 78.5344187 | 5 | 215 | 216 | 1848 | 1.00 |
| 217 | 32.0075926 | 78.5538043 | 5 | 216 | 217 | 1848 | 1.00 |
| 218 | 32.0098717 | 78.5731900 | 5 | 217 | 218 | 1848 | 1.00 |
| 219 | 32.0121928 | 78.5925644 | 5 | 218 | 219 | 1848 | 1.00 |
| 220 | 32.0145617 | 78.6119388 | 5 | 219 | 220 | 1848 | 1.00 |
| 221 | 32.0169727 | 78.6313020 | 5 | 220 | 221 | 1848 | 1.00 |
| 222 | 32.0194256 | 78.6506562 | 5 | 221 | 222 | 1848 | 1.00 |
| 223 | 32.0219263 | 78.6700059 | 5 | 222 | 223 | 1848 | 1.00 |
| 224 | 32.0244691 | 78.6893511 | 5 | 223 | 224 | 1848 | 1.00 |
| 225 | 32.0267057 | 78.7060845 | 4 (a) (ii) | 224 | 225 | 1600 | 0.86 |
| 226 | 32.2420959 | 78.9835921 | 4 (a) (ii) | 225 | 226 | 35442 | 19.14 |
| 227 | 32.2534879 | 78.9979606 | 4 (a) (ii) | 226 | 227 | 1852 | 1.00 |
| 228 | 32.2650808 | 79.0121068 | 4 (a) (ii) | 227 | 228 | 1852 | 1.00 |
| 229 | 32.2768705 | 79.0260285 | 4 (a) (ii) | 228 | 229 | 1852 | 1.00 |
| 230 | 32.2888533 | 79.0397211 | 4 (a) (ii) | 229 | 230 | 1852 | 1.00 |
| 231 | 32.3010271 | 79.0531801 | 4 (a) (ii) | 230 | 231 | 1852 | 1.00 |
| 232 | 32.3133881 | 79.0664010 | 4 (a) (ii) | 231 | 232 | 1852 | 1.00 |
| 233 | 32.3259343 | 79.0793817 | 4 (a) (ii) | 232 | 233 | 1852 | 1.00 |
| 234 | 32.3386598 | 79.0921175 | 4 (a) (ii) | 233 | 234 | 1852 | 1.00 |
| 235 | 32.3515627 | 79.1046064 | 4 (a) (ii) | 234 | 235 | 1852 | 1.00 |
| 236 | 32.3646392 | 79.1168437 | 4 (a) (ii) | 235 | 236 | 1852 | 1.00 |
| 237 | 32.3778871 | 79.1288249 | 4 (a) (ii) | 236 | 237 | 1852 | 1.00 |
| 238 | 32.3913008 | 79.1405480 | 4 (a) (ii) | 237 | 238 | 1852 | 1.00 |
| 239 | 32.4048763 | 79.1520105 | 4 (a) (ii) | 238 | 239 | 1852 | 1.00 |
| 240 | 32.4186116 | 79.1632080 | 4 (a) (ii) | 239 | 240 | 1852 | 1.00 |
| 241 | 32.4325029 | 79.1741382 | 4 (a) (ii) | 240 | 241 | 1852 | 1.00 |
| 242 | 32.4465444 | 79.1847945 | 4 (a) (ii) | 241 | 242 | 1852 | 1.00 |

The French Continental Shelf

| FP | Latitude °S | Longitude °E | Method Article 76 | From FP | To FP | Distance (m) | Distance (Miles) |
|-----|-------------|--------------|-------------------|---------|-------|--------------|------------------|
| 243 | 32.4607342 | 79.1951790 | 4 (a) (ii) | 242 | 243 | 1852 | 1.00 |
| 244 | 32.4750682 | 79.2052873 | 4 (a) (ii) | 243 | 244 | 1852 | 1.00 |
| 245 | 32.4895427 | 79.2151126 | 4 (a) (ii) | 244 | 245 | 1852 | 1.00 |
| 246 | 32.5041519 | 79.2246572 | 4 (a) (ii) | 245 | 246 | 1852 | 1.00 |
| 247 | 32.5188937 | 79.2339166 | 4 (a) (ii) | 246 | 247 | 1852 | 1.00 |
| 248 | 32.5337644 | 79.2428863 | 4 (a) (ii) | 247 | 248 | 1852 | 1.00 |
| 249 | 32.5487581 | 79.2515663 | 4 (a) (ii) | 248 | 249 | 1852 | 1.00 |
| 250 | 32.5638711 | 79.2599520 | 4 (a) (ii) | 249 | 250 | 1852 | 1.00 |
| 251 | 32.5791012 | 79.2680414 | 4 (a) (ii) | 250 | 251 | 1852 | 1.00 |
| 252 | 32.5944428 | 79.2758342 | 4 (a) (ii) | 251 | 252 | 1852 | 1.00 |
| 253 | 32.6098901 | 79.2833262 | 4 (a) (ii) | 252 | 253 | 1852 | 1.00 |
| 254 | 32.6254412 | 79.2905150 | 4 (a) (ii) | 253 | 254 | 1852 | 1.00 |
| 255 | 32.6410921 | 79.2973983 | 4 (a) (ii) | 254 | 255 | 1852 | 1.00 |
| 256 | 32.6568353 | 79.3039762 | 4 (a) (ii) | 255 | 256 | 1852 | 1.00 |
| 257 | 32.6726706 | 79.3102442 | 4 (a) (ii) | 256 | 257 | 1852 | 1.00 |
| 258 | 32.6885904 | 79.3162023 | 4 (a) (ii) | 257 | 258 | 1852 | 1.00 |
| 259 | 32.7045929 | 79.3218482 | 4 (a) (ii) | 258 | 259 | 1852 | 1.00 |
| 260 | 32.7206721 | 79.3271797 | 4 (a) (ii) | 259 | 260 | 1852 | 1.00 |
| 261 | 32.7368244 | 79.3321945 | 4 (a) (ii) | 260 | 261 | 1852 | 1.00 |
| 262 | 32.7530439 | 79.3368927 | 4 (a) (ii) | 261 | 262 | 1852 | 1.00 |
| 263 | 32.7693269 | 79.3412720 | 4 (a) (ii) | 262 | 263 | 1852 | 1.00 |
| 264 | 32.7856694 | 79.3453324 | 4 (a) (ii) | 263 | 264 | 1852 | 1.00 |
| 265 | 32.8020678 | 79.3490694 | 4 (a) (ii) | 264 | 265 | 1852 | 1.00 |
| 266 | 32.8185142 | 79.3524852 | 4 (a) (ii) | 265 | 266 | 1852 | 1.00 |
| 267 | 32.8350088 | 79.3555754 | 4 (a) (ii) | 266 | 267 | 1852 | 1.00 |
| 268 | 32.8515420 | 79.3583423 | 4 (a) (ii) | 267 | 268 | 1852 | 1.00 |
| 269 | 32.8681138 | 79.3607812 | 4 (a) (ii) | 268 | 269 | 1852 | 1.00 |
| 270 | 32.8847165 | 79.3628945 | 4 (a) (ii) | 269 | 270 | 1852 | 1.00 |
| 271 | 32.9013465 | 79.3646821 | 4 (a) (ii) | 270 | 271 | 1852 | 1.00 |
| 272 | 32.9179998 | 79.3661396 | 4 (a) (ii) | 271 | 272 | 1852 | 1.00 |
| 273 | 32.9346707 | 79.3672693 | 4 (a) (ii) | 272 | 273 | 1852 | 1.00 |
| 274 | 32.9513556 | 79.3680688 | 4 (a) (ii) | 273 | 274 | 1852 | 1.00 |
| 275 | 32.9680486 | 79.3685381 | 4 (a) (ii) | 274 | 275 | 1852 | 1.00 |
| 276 | 32.9847460 | 79.3686796 | 4 (a) (ii) | 275 | 276 | 1852 | 1.00 |
| 277 | 33.0014440 | 79.3684887 | 4 (a) (ii) | 276 | 277 | 1852 | 1.00 |
| 278 | 33.7039698 | 79.3665102 | 4 (a) (ii) | 277 | 278 | 77917 | 42.07 |

The French Continental Shelf

| FP | Latitude °S | Longitude °E | Method Article 76 | From FP | To FP | Distance (m) | Distance (Miles) |
|-----|-------------|--------------|-------------------|---------|-------|--------------|------------------|
| 279 | 33.7028736 | 80.5435749 | 4 (a) (ii) | 278 | 279 | 109118 | 58.92 |
| 280 | 33.3403715 | 80.8588859 | 4 (a) (ii) | 279 | 280 | 49745 | 26.86 |
| 281 | 33.3269643 | 80.8707436 | 4 (a) (ii) | 280 | 281 | 1852 | 1.00 |
| 282 | 33.3137248 | 80.8828619 | 4 (a) (ii) | 281 | 282 | 1852 | 1.00 |
| 283 | 33.3006548 | 80.8952362 | 4 (a) (ii) | 282 | 283 | 1852 | 1.00 |
| 284 | 33.2877583 | 80.9078643 | 4 (a) (ii) | 283 | 284 | 1852 | 1.00 |
| 285 | 33.2750390 | 80.9207439 | 4 (a) (ii) | 284 | 285 | 1852 | 1.00 |
| 286 | 32.7008294 | 81.5074875 | 4 (a) (ii) | 285 | 286 | 84040 | 45.38 |
| 287 | 32.6882885 | 81.5205265 | 4 (a) (ii) | 286 | 287 | 1852 | 1.00 |
| 288 | 32.6759300 | 81.5338081 | 4 (a) (ii) | 287 | 288 | 1852 | 1.00 |
| 289 | 32.6637598 | 81.5473255 | 4 (a) (ii) | 288 | 289 | 1852 | 1.00 |
| 290 | 32.6517816 | 81.5610787 | 4 (a) (ii) | 289 | 290 | 1852 | 1.00 |
| 291 | 32.6399957 | 81.5750610 | 4 (a) (ii) | 290 | 291 | 1852 | 1.00 |
| 292 | 32.6284059 | 81.5892701 | 4 (a) (ii) | 291 | 292 | 1852 | 1.00 |
| 293 | 32.6170179 | 81.6037038 | 4 (a) (ii) | 292 | 293 | 1852 | 1.00 |
| 294 | 32.6058337 | 81.6183530 | 4 (a) (ii) | 293 | 294 | 1852 | 1.00 |
| 295 | 32.5948554 | 81.6332202 | 4 (a) (ii) | 294 | 295 | 1852 | 1.00 |
| 296 | 32.5840867 | 81.6482939 | 4 (a) (ii) | 295 | 296 | 1852 | 1.00 |
| 297 | 32.5735298 | 81.6635765 | 4 (a) (ii) | 296 | 297 | 1852 | 1.00 |
| 298 | 32.5631883 | 81.6790612 | 4 (a) (ii) | 297 | 298 | 1852 | 1.00 |
| 299 | 32.5530644 | 81.6947435 | 4 (a) (ii) | 298 | 299 | 1852 | 1.00 |
| 300 | 32.5431619 | 81.7106190 | 4 (a) (ii) | 299 | 300 | 1852 | 1.00 |
| 301 | 32.5334828 | 81.7266831 | 4 (a) (ii) | 300 | 301 | 1852 | 1.00 |
| 302 | 32.5240291 | 81.7429314 | 4 (a) (ii) | 301 | 302 | 1852 | 1.00 |
| 303 | 32.5148027 | 81.7593616 | 4 (a) (ii) | 302 | 303 | 1852 | 1.00 |
| 304 | 32.5058094 | 81.7759670 | 4 (a) (ii) | 303 | 304 | 1852 | 1.00 |
| 305 | 32.4970493 | 81.7927430 | 4 (a) (ii) | 304 | 305 | 1852 | 1.00 |
| 306 | 32.4885244 | 81.8096875 | 4 (a) (ii) | 305 | 306 | 1852 | 1.00 |
| 307 | 32.4802385 | 81.8267936 | 4 (a) (ii) | 306 | 307 | 1852 | 1.00 |
| 308 | 32.4721917 | 81.8440548 | 4 (a) (ii) | 307 | 308 | 1852 | 1.00 |
| 309 | 32.4643879 | 81.8614708 | 4 (a) (ii) | 308 | 309 | 1852 | 1.00 |
| 310 | 32.4568290 | 81.8790352 | 4 (a) (ii) | 309 | 310 | 1852 | 1.00 |
| 311 | 32.4495170 | 81.8967432 | 4 (a) (ii) | 310 | 311 | 1852 | 1.00 |
| 312 | 32.4424539 | 81.9145882 | 4 (a) (ii) | 311 | 312 | 1852 | 1.00 |
| 313 | 32.4356417 | 81.9325680 | 4 (a) (ii) | 312 | 313 | 1852 | 1.00 |
| 314 | 32.4290803 | 81.9506758 | 4 (a) (ii) | 313 | 314 | 1852 | 1.00 |

The French Continental Shelf

| FP | Latitude °S | Longitude °E | Method Article 76 | From FP | To FP | Distance (m) | Distance (Miles) |
|-----|-------------|--------------|-------------------|---------|-------|--------------|------------------|
| 315 | 32.4227737 | 81.9689071 | 4 (a) (ii) | 314 | 315 | 1852 | 1.00 |
| 316 | 32.4167238 | 81.9872574 | 4 (a) (ii) | 315 | 316 | 1852 | 1.00 |
| 317 | 32.4109307 | 82.0057223 | 4 (a) (ii) | 316 | 317 | 1852 | 1.00 |
| 318 | 32.4053964 | 82.0242950 | 4 (a) (ii) | 317 | 318 | 1852 | 1.00 |
| 319 | 32.4001227 | 82.0429732 | 4 (a) (ii) | 318 | 319 | 1852 | 1.00 |
| 320 | 32.3951116 | 82.0617480 | 4 (a) (ii) | 319 | 320 | 1852 | 1.00 |
| 321 | 32.3903633 | 82.0806193 | 4 (a) (ii) | 320 | 321 | 1852 | 1.00 |
| 322 | 32.3858795 | 82.0995783 | 4 (a) (ii) | 321 | 322 | 1852 | 1.00 |
| 323 | 32.3816623 | 82.1186203 | 4 (a) (ii) | 322 | 323 | 1852 | 1.00 |
| 324 | 32.3777118 | 82.1377410 | 4 (a) (ii) | 323 | 324 | 1852 | 1.00 |
| 325 | 32.3740279 | 82.1569357 | 4 (a) (ii) | 324 | 325 | 1852 | 1.00 |
| 326 | 32.3706144 | 82.1761979 | 4 (a) (ii) | 325 | 326 | 1852 | 1.00 |
| 327 | 32.3674715 | 82.1955229 | 4 (a) (ii) | 326 | 327 | 1852 | 1.00 |
| 328 | 32.3645972 | 82.2149063 | 4 (a) (ii) | 327 | 328 | 1852 | 1.00 |
| 329 | 32.3619954 | 82.2343436 | 4 (a) (ii) | 328 | 329 | 1852 | 1.00 |
| 330 | 32.3596662 | 82.2538258 | 4 (a) (ii) | 329 | 330 | 1852 | 1.00 |
| 331 | 32.2984807 | 82.7740738 | 4 (a) (ii) | 330 | 331 | 49450 | 26.70 |
| 332 | 32.1832540 | 83.6400857 | 4 (a) (ii) | 331 | 332 | 82612 | 44.61 |
| 333 | 32.1806508 | 83.6594826 | 4 (a) (ii) | 332 | 333 | 1852 | 1.00 |
| 334 | 32.1783226 | 83.6789289 | 4 (a) (ii) | 333 | 334 | 1852 | 1.00 |
| 335 | 32.1762655 | 83.6984156 | 4 (a) (ii) | 334 | 335 | 1852 | 1.00 |
| 336 | 32.1744815 | 83.7179382 | 4 (a) (ii) | 335 | 336 | 1852 | 1.00 |
| 337 | 32.1729725 | 83.7374923 | 4 (a) (ii) | 336 | 337 | 1852 | 1.00 |
| 338 | 32.1717385 | 83.7570733 | 4 (a) (ii) | 337 | 338 | 1852 | 1.00 |
| 339 | 32.1707777 | 83.7766768 | 4 (a) (ii) | 338 | 339 | 1852 | 1.00 |
| 340 | 32.1700920 | 83.7962937 | 4 (a) (ii) | 339 | 340 | 1852 | 1.00 |
| 341 | 32.1696813 | 83.8159219 | 4 (a) (ii) | 340 | 341 | 1852 | 1.00 |
| 342 | 32.1695457 | 83.8353817 | 4 (a) (ii) | 341 | 342 | 1852 | 1.00 |
| 343 | 32.1696832 | 83.8550144 | 4 (a) (ii) | 342 | 343 | 1852 | 1.00 |
| 344 | 32.1700958 | 83.8746448 | 4 (a) (ii) | 343 | 344 | 1852 | 1.00 |
| 345 | 32.1707854 | 83.8942618 | 4 (a) (ii) | 344 | 345 | 1852 | 1.00 |
| 346 | 32.1717481 | 83.9138630 | 4 (a) (ii) | 345 | 346 | 1852 | 1.00 |
| 347 | 32.1729859 | 83.9334440 | 4 (a) (ii) | 346 | 347 | 1852 | 1.00 |
| 348 | 32.1744967 | 83.9529981 | 4 (a) (ii) | 347 | 348 | 1852 | 1.00 |
| 349 | 32.1762827 | 83.9725230 | 4 (a) (ii) | 348 | 349 | 1852 | 1.00 |
| 350 | 32.1783417 | 83.9920074 | 4 (a) (ii) | 349 | 350 | 1852 | 1.00 |

The French Continental Shelf

| FP | Latitude °S | Longitude °E | Method Article 76 | From FP | To FP | Distance (m) | Distance (Miles) |
|-----|-------------|--------------|-------------------|---------|-------|--------------|------------------|
| 351 | 32.1806737 | 84.0114515 | 4 (a) (ii) | 350 | 351 | 1852 | 1.00 |
| 352 | 32.1832789 | 84.0308484 | 4 (a) (ii) | 351 | 352 | 1852 | 1.00 |
| 353 | 32.1861532 | 84.0501936 | 4 (a) (ii) | 352 | 353 | 1852 | 1.00 |
| 354 | 32.1893006 | 84.0694804 | 4 (a) (ii) | 353 | 354 | 1852 | 1.00 |
| 355 | 32.1927171 | 84.0887021 | 4 (a) (ii) | 354 | 355 | 1852 | 1.00 |
| 356 | 32.1964027 | 84.1078587 | 4 (a) (ii) | 355 | 356 | 1852 | 1.00 |
| 357 | 32.2003555 | 84.1269411 | 4 (a) (ii) | 356 | 357 | 1852 | 1.00 |
| 358 | 32.2045774 | 84.1459450 | 4 (a) (ii) | 357 | 358 | 1852 | 1.00 |
| 359 | 32.2090626 | 84.1648658 | 4 (a) (ii) | 358 | 359 | 1852 | 1.00 |
| 360 | 32.2138148 | 84.1836967 | 4 (a) (ii) | 359 | 360 | 1852 | 1.00 |
| 361 | 32.2188284 | 84.2024333 | 4 (a) (ii) | 360 | 361 | 1852 | 1.00 |
| 362 | 32.2241051 | 84.2210734 | 4 (a) (ii) | 361 | 362 | 1852 | 1.00 |
| 363 | 32.2296411 | 84.2396078 | 4 (a) (ii) | 362 | 363 | 1852 | 1.00 |
| 364 | 32.2354383 | 84.2580345 | 4 (a) (ii) | 363 | 364 | 1852 | 1.00 |
| 365 | 32.2414909 | 84.2763489 | 4 (a) (ii) | 364 | 365 | 1852 | 1.00 |
| 366 | 32.2478007 | 84.2945421 | 4 (a) (ii) | 365 | 366 | 1852 | 1.00 |
| 367 | 32.2543639 | 84.3126117 | 4 (a) (ii) | 366 | 367 | 1852 | 1.00 |
| 368 | 32.2611804 | 84.3305555 | 4 (a) (ii) | 367 | 368 | 1852 | 1.00 |
| 369 | 32.2682463 | 84.3483624 | 4 (a) (ii) | 368 | 369 | 1852 | 1.00 |
| 370 | 32.2755617 | 84.3660322 | 4 (a) (ii) | 369 | 370 | 1852 | 1.00 |
| 371 | 32.2826322 | 84.3824243 | 4 (a) (ii) | 370 | 371 | 1732 | 0.94 |
| 372 | 32.2947478 | 84.3973857 | 5 | 371 | 372 | 1946 | 1.05 |
| 373 | 32.3063944 | 84.4114758 | 5 | 372 | 373 | 1852 | 1.00 |
| 374 | 32.3181577 | 84.4254311 | 5 | 373 | 374 | 1852 | 1.00 |
| 375 | 32.3300378 | 84.4392517 | 5 | 374 | 375 | 1852 | 1.00 |
| 376 | 32.3420325 | 84.4529330 | 5 | 375 | 376 | 1852 | 1.00 |
| 377 | 32.3541420 | 84.4664796 | 5 | 376 | 377 | 1852 | 1.00 |
| 378 | 32.3663641 | 84.4798847 | 5 | 377 | 378 | 1852 | 1.00 |
| 379 | 32.3786971 | 84.4931484 | 5 | 378 | 379 | 1852 | 1.00 |
| 380 | 32.3911426 | 84.5062705 | 5 | 379 | 380 | 1852 | 1.00 |
| 381 | 32.4036950 | 84.5192489 | 5 | 380 | 381 | 1852 | 1.00 |
| 382 | 32.4163581 | 84.5320813 | 5 | 381 | 382 | 1852 | 1.00 |
| 383 | 32.4291260 | 84.5447678 | 5 | 382 | 383 | 1852 | 1.00 |
| 384 | 32.4420007 | 84.5573083 | 5 | 383 | 384 | 1852 | 1.00 |
| 385 | 32.4549782 | 84.5696983 | 5 | 384 | 385 | 1852 | 1.00 |
| 386 | 32.4680604 | 84.5819378 | 5 | 385 | 386 | 1852 | 1.00 |

The French Continental Shelf

| FP | Latitude °S | Longitude °E | Method Article 76 | From FP | To FP | Distance (m) | Distance (Miles) |
|-----|-------------|--------------|-------------------|---------|-------|--------------|------------------|
| 387 | 32.4812455 | 84.5940269 | 5 | 386 | 387 | 1852 | 1.00 |
| 388 | 32.4945294 | 84.6059633 | 5 | 387 | 388 | 1852 | 1.00 |
| 389 | 32.5079122 | 84.6177469 | 5 | 388 | 389 | 1852 | 1.00 |
| 390 | 32.5213939 | 84.6293756 | 5 | 389 | 390 | 1852 | 1.00 |
| 391 | 32.5349724 | 84.6408471 | 5 | 390 | 391 | 1852 | 1.00 |
| 392 | 32.5486459 | 84.6521614 | 5 | 391 | 392 | 1852 | 1.00 |
| 393 | 32.5624143 | 84.6633162 | 5 | 392 | 393 | 1852 | 1.00 |
| 394 | 32.5762756 | 84.6743138 | 5 | 393 | 394 | 1852 | 1.00 |
| 395 | 32.5902260 | 84.6851475 | 5 | 394 | 395 | 1852 | 1.00 |
| 396 | 32.6042693 | 84.6958218 | 5 | 395 | 396 | 1852 | 1.00 |
| 397 | 32.6183997 | 84.7063320 | 5 | 396 | 397 | 1852 | 1.00 |
| 398 | 32.6326171 | 84.7166784 | 5 | 397 | 398 | 1852 | 1.00 |
| 399 | 32.6469215 | 84.7268585 | 5 | 398 | 399 | 1852 | 1.00 |
| 400 | 32.6613092 | 84.7368748 | 5 | 399 | 400 | 1852 | 1.00 |
| 401 | 32.6757818 | 84.7467225 | 5 | 400 | 401 | 1852 | 1.00 |
| 402 | 32.6903357 | 84.7564019 | 5 | 401 | 402 | 1852 | 1.00 |
| 403 | 32.7049688 | 84.7659106 | 5 | 402 | 403 | 1852 | 1.00 |
| 404 | 32.7196812 | 84.7752508 | 5 | 403 | 404 | 1852 | 1.00 |
| 405 | 32.7344726 | 84.7844181 | 5 | 404 | 405 | 1852 | 1.00 |
| 406 | 32.7493376 | 84.7934125 | 5 | 405 | 406 | 1852 | 1.00 |
| 407 | 32.7642797 | 84.8022362 | 5 | 406 | 407 | 1852 | 1.00 |
| 408 | 32.7792933 | 84.8108847 | 5 | 407 | 408 | 1852 | 1.00 |
| 409 | 32.7943783 | 84.8193558 | 5 | 408 | 409 | 1852 | 1.00 |
| 410 | 32.8095347 | 84.8276540 | 5 | 409 | 410 | 1852 | 1.00 |
| 411 | 32.8247586 | 84.8357725 | 5 | 410 | 411 | 1852 | 1.00 |
| 412 | 32.8400500 | 84.8437136 | 5 | 411 | 412 | 1852 | 1.00 |
| 413 | 32.8554090 | 84.8514773 | 5 | 412 | 413 | 1852 | 1.00 |
| 414 | 32.8708296 | 84.8590614 | 5 | 413 | 414 | 1852 | 1.00 |
| 415 | 32.8863139 | 84.8664635 | 5 | 414 | 415 | 1852 | 1.00 |
| 416 | 32.9018599 | 84.8736859 | 5 | 415 | 416 | 1852 | 1.00 |
| 417 | 32.9174656 | 84.8807265 | 5 | 416 | 417 | 1852 | 1.00 |
| 418 | 32.9331292 | 84.8875829 | 5 | 417 | 418 | 1852 | 1.00 |
| 419 | 32.9488486 | 84.8942551 | 5 | 418 | 419 | 1852 | 1.00 |
| 420 | 32.9646239 | 84.9007432 | 5 | 419 | 420 | 1852 | 1.00 |
| 421 | 33.1717861 | 84.9843539 | 5 | 420 | 421 | 24267 | 13.10 |
| 422 | 33.1876136 | 84.9906758 | 5 | 421 | 422 | 1852 | 1.00 |

The French Continental Shelf

| FP | Latitude °S | Longitude °E | Method Article 76 | From FP | To FP | Distance (m) | Distance (Miles) |
|-----|-------------|--------------|-------------------|---------|-------|--------------|------------------|
| 423 | 33.2034931 | 84.9968113 | 5 | 422 | 423 | 1852 | 1.00 |
| 424 | 33.2194224 | 85.0027581 | 5 | 423 | 424 | 1852 | 1.00 |
| 425 | 33.2353998 | 85.0085186 | 5 | 424 | 425 | 1852 | 1.00 |
| 426 | 33.2514271 | 85.0140904 | 5 | 425 | 426 | 1852 | 1.00 |
| 427 | 33.2730431 | 85.0212612 | 4 (a) (ii) | 426 | 427 | 2489 | 1.34 |
| 428 | 33.2950140 | 85.0184921 | 4 (a) (ii) | 427 | 428 | 2450 | 1.32 |
| 429 | 33.3115771 | 85.0159881 | 4 (a) (ii) | 428 | 429 | 1852 | 1.00 |
| 430 | 33.3281049 | 85.0131561 | 4 (a) (ii) | 429 | 430 | 1852 | 1.00 |
| 431 | 33.3445900 | 85.0099941 | 4 (a) (ii) | 430 | 431 | 1852 | 1.00 |
| 432 | 33.3610286 | 85.0065041 | 4 (a) (ii) | 431 | 432 | 1852 | 1.00 |
| 433 | 33.3774151 | 85.0026885 | 4 (a) (ii) | 432 | 433 | 1852 | 1.00 |
| 434 | 33.3937458 | 84.9985450 | 4 (a) (ii) | 433 | 434 | 1852 | 1.00 |
| 435 | 33.4100168 | 84.9940759 | 4 (a) (ii) | 434 | 435 | 1852 | 1.00 |
| 436 | 33.4262226 | 84.9892834 | 4 (a) (ii) | 435 | 436 | 1852 | 1.00 |
| 437 | 33.4423595 | 84.9841652 | 4 (a) (ii) | 436 | 437 | 1852 | 1.00 |
| 438 | 33.4584218 | 84.9787282 | 4 (a) (ii) | 437 | 438 | 1852 | 1.00 |
| 439 | 33.4744058 | 84.9729677 | 4 (a) (ii) | 438 | 439 | 1852 | 1.00 |
| 440 | 33.4903059 | 84.9668906 | 4 (a) (ii) | 439 | 440 | 1852 | 1.00 |
| 441 | 33.5061203 | 84.9604946 | 4 (a) (ii) | 440 | 441 | 1852 | 1.00 |
| 442 | 33.5218415 | 84.9537820 | 4 (a) (ii) | 441 | 442 | 1852 | 1.00 |
| 443 | 33.5374658 | 84.9467571 | 4 (a) (ii) | 442 | 443 | 1852 | 1.00 |
| 444 | 33.5529913 | 84.9394179 | 4 (a) (ii) | 443 | 444 | 1852 | 1.00 |
| 445 | 33.5684106 | 84.9317688 | 4 (a) (ii) | 444 | 445 | 1852 | 1.00 |
| 446 | 33.5837200 | 84.9238097 | 4 (a) (ii) | 445 | 446 | 1852 | 1.00 |
| 447 | 33.5989177 | 84.9155452 | 4 (a) (ii) | 446 | 447 | 1852 | 1.00 |
| 448 | 33.6139961 | 84.9069775 | 4 (a) (ii) | 447 | 448 | 1852 | 1.00 |
| 449 | 33.6289517 | 84.8981066 | 4 (a) (ii) | 448 | 449 | 1852 | 1.00 |
| 450 | 33.6437825 | 84.8889348 | 4 (a) (ii) | 449 | 450 | 1852 | 1.00 |
| 451 | 33.6584812 | 84.8794666 | 4 (a) (ii) | 450 | 451 | 1852 | 1.00 |
| 452 | 33.6730459 | 84.8697042 | 4 (a) (ii) | 451 | 452 | 1852 | 1.00 |
| 453 | 33.6874710 | 84.8596498 | 4 (a) (ii) | 452 | 453 | 1852 | 1.00 |
| 454 | 34.5522388 | 84.2784555 | 4 (a) (ii) | 453 | 454 | 109892 | 59.34 |
| 455 | 34.5666658 | 84.2683023 | 4 (a) (ii) | 454 | 455 | 1852 | 1.00 |
| 456 | 34.5809490 | 84.2578549 | 4 (a) (ii) | 455 | 456 | 1852 | 1.00 |
| 457 | 34.5950850 | 84.2471200 | 4 (a) (ii) | 456 | 457 | 1852 | 1.00 |
| 458 | 34.6090718 | 84.2360954 | 4 (a) (ii) | 457 | 458 | 1852 | 1.00 |

The French Continental Shelf

| FP | Latitude °S | Longitude °E | Method Article 76 | From FP | To FP | Distance (m) | Distance (Miles) |
|---|-------------|--------------|-------------------|---------|-------|--------------|------------------|
| 459 | 34.6229021 | 84.2247879 | 4 (a) (ii) | 458 | 459 | 1852 | 1.00 |
| 460 | 34.6365723 | 84.2131996 | 4 (a) (ii) | 459 | 460 | 1852 | 1.00 |
| 461 | 34.6500826 | 84.2013329 | 4 (a) (ii) | 460 | 461 | 1852 | 1.00 |
| 462 | 34.6634254 | 84.1891921 | 4 (a) (ii) | 461 | 462 | 1852 | 1.00 |
| 463 | 35.4414962 | 83.4592503 | 4 (a) (ii) | 462 | 463 | 109022 | 58.87 |
| 464 | 36.0878745 | 82.9047787 | 4 (a) (ii) | 463 | 464 | 88046 | 47.54 |
| 465 | 36.7548157 | 82.4358065 | 4 (a) (ii) | 464 | 465 | 84586 | 45.67 |
| 466 | 36.7692442 | 82.4253860 | 4 (a) (ii) | 465 | 466 | 1852 | 1.00 |
| 467 | 36.7835308 | 82.4146624 | 4 (a) (ii) | 466 | 467 | 1852 | 1.00 |
| 468 | 36.7976685 | 82.4036423 | 4 (a) (ii) | 467 | 468 | 1852 | 1.00 |
| 469 | 36.8116572 | 82.3923258 | 4 (a) (ii) | 468 | 469 | 1852 | 1.00 |
| 470 | 36.8254899 | 82.3807173 | 4 (a) (ii) | 469 | 470 | 1852 | 1.00 |
| 471 | 37.0114038 | 82.2232336 | 4 (a) (ii) | 470 | 471 | 24952 | 13.47 |
| 472 | 37.9324350 | 81.8116211 | 1 | 471 | 472 | 108512 | 58.59 |
| Transition between Northern and Southern Zones | | | | | | | |
| 473 | 39.4187698 | 81.7419208 | 1 | | | | |
| 474 | 40.3634474 | 82.1320704 | 4 (a) (ii) | 473 | 474 | 110070 | 59.43 |
| 475 | 40.6698179 | 82.4558479 | 4 (a) (ii) | 474 | 475 | 43707 | 23.60 |
| 476 | 40.6828450 | 82.4695247 | 4 (a) (ii) | 475 | 476 | 1852 | 1.00 |
| 477 | 40.6960405 | 82.4829209 | 4 (a) (ii) | 476 | 477 | 1852 | 1.00 |
| 478 | 40.7094042 | 82.4960295 | 4 (a) (ii) | 477 | 478 | 1852 | 1.00 |
| 479 | 40.7229309 | 82.5088485 | 4 (a) (ii) | 478 | 479 | 1852 | 1.00 |
| 480 | 40.7366155 | 82.5213755 | 4 (a) (ii) | 479 | 480 | 1852 | 1.00 |
| 481 | 40.7504561 | 82.5336061 | 4 (a) (ii) | 480 | 481 | 1852 | 1.00 |
| 482 | 41.2068778 | 82.9308074 | 4 (a) (ii) | 481 | 482 | 60718 | 32.79 |
| 483 | 41.7772061 | 84.0085342 | 4 (a) (ii) | 482 | 483 | 110051 | 59.42 |
| 484 | 41.7868378 | 84.0267184 | 4 (a) (ii) | 483 | 484 | 1852 | 1.00 |
| 485 | 41.7964932 | 84.0443276 | 4 (a) (ii) | 484 | 485 | 1815 | 0.98 |
| 486 | 41.8036435 | 84.0389287 | 5 | 485 | 486 | 913 | 0.49 |
| 487 | 41.8181114 | 84.0279176 | 5 | 486 | 487 | 1848 | 1.00 |
| 488 | 41.8325508 | 84.0168549 | 5 | 487 | 488 | 1848 | 1.00 |
| 489 | 41.8469702 | 84.0057270 | 5 | 488 | 489 | 1848 | 1.00 |
| 490 | 41.8613627 | 83.9945452 | 5 | 489 | 490 | 1848 | 1.00 |
| 491 | 41.8757285 | 83.9833005 | 5 | 490 | 491 | 1848 | 1.00 |
| 492 | 41.8900726 | 83.9719952 | 5 | 491 | 492 | 1848 | 1.00 |
| 493 | 41.9043917 | 83.9606338 | 5 | 492 | 493 | 1848 | 1.00 |

The French Continental Shelf

| FP | Latitude °S | Longitude °E | Method Article 76 | From FP | To FP | Distance (m) | Distance (Miles) |
|-----|-------------|--------------|-------------------|---------|-------|--------------|------------------|
| 494 | 41.9186823 | 83.9492117 | 5 | 493 | 494 | 1848 | 1.00 |
| 495 | 41.9329479 | 83.9377267 | 5 | 494 | 495 | 1848 | 1.00 |
| 496 | 41.9471868 | 83.9261856 | 5 | 495 | 496 | 1848 | 1.00 |
| 497 | 41.9614041 | 83.9145839 | 5 | 496 | 497 | 1848 | 1.00 |
| 498 | 41.9755914 | 83.9029193 | 5 | 497 | 498 | 1848 | 1.00 |
| 499 | 41.9897571 | 83.8911985 | 5 | 498 | 499 | 1848 | 1.00 |
| 500 | 42.0038911 | 83.8794238 | 5 | 499 | 500 | 1848 | 1.00 |
| 501 | 42.0180035 | 83.8675818 | 5 | 500 | 501 | 1848 | 1.00 |
| 502 | 42.0320894 | 83.8556881 | 5 | 501 | 502 | 1848 | 1.00 |
| 503 | 42.0461453 | 83.8437270 | 5 | 502 | 503 | 1848 | 1.00 |
| 504 | 42.0601746 | 83.8317166 | 5 | 503 | 504 | 1848 | 1.00 |
| 505 | 42.0741774 | 83.8196387 | 5 | 504 | 505 | 1848 | 1.00 |
| 506 | 42.0881554 | 83.8075115 | 5 | 505 | 506 | 1848 | 1.00 |
| 507 | 42.1021068 | 83.7953168 | 5 | 506 | 507 | 1848 | 1.00 |
| 508 | 42.1160317 | 83.7830728 | 5 | 507 | 508 | 1848 | 1.00 |
| 509 | 42.1299251 | 83.7707591 | 5 | 508 | 509 | 1848 | 1.00 |
| 510 | 42.1437938 | 83.7583961 | 5 | 509 | 510 | 1848 | 1.00 |
| 511 | 42.1576359 | 83.7459724 | 5 | 510 | 511 | 1848 | 1.00 |
| 512 | 42.1714483 | 83.7334880 | 5 | 511 | 512 | 1848 | 1.00 |
| 513 | 42.1852343 | 83.7209453 | 5 | 512 | 513 | 1848 | 1.00 |
| 514 | 42.1989889 | 83.7083487 | 5 | 513 | 514 | 1848 | 1.00 |
| 515 | 42.2127170 | 83.6956892 | 5 | 514 | 515 | 1848 | 1.00 |
| 516 | 42.2264155 | 83.6829758 | 5 | 515 | 516 | 1848 | 1.00 |
| 517 | 42.2400893 | 83.6701995 | 5 | 516 | 517 | 1848 | 1.00 |
| 518 | 42.2537350 | 83.6573670 | 5 | 517 | 518 | 1848 | 1.00 |
| 519 | 42.2673511 | 83.6444807 | 5 | 518 | 519 | 1848 | 1.00 |
| 520 | 42.2809376 | 83.6315382 | 5 | 519 | 520 | 1848 | 1.00 |
| 521 | 42.2944928 | 83.6185329 | 5 | 520 | 521 | 1848 | 1.00 |
| 522 | 42.3080216 | 83.6054736 | 5 | 521 | 522 | 1848 | 1.00 |
| 523 | 42.3215209 | 83.5923515 | 5 | 522 | 523 | 1848 | 1.00 |
| 524 | 42.3349890 | 83.5791799 | 5 | 523 | 524 | 1848 | 1.00 |
| 525 | 42.3484308 | 83.5659455 | 5 | 524 | 525 | 1848 | 1.00 |
| 526 | 42.3618431 | 83.5526572 | 5 | 525 | 526 | 1848 | 1.00 |
| 527 | 42.3752258 | 83.5393060 | 5 | 526 | 527 | 1848 | 1.00 |
| 528 | 42.3885774 | 83.5259053 | 5 | 527 | 528 | 1848 | 1.00 |
| 529 | 42.4018978 | 83.5124441 | 5 | 528 | 529 | 1848 | 1.00 |

The French Continental Shelf

| FP | Latitude °S | Longitude °E | Method Article 76 | From FP | To FP | Distance (m) | Distance (Miles) |
|-----|-------------|--------------|-------------------|---------|-------|--------------|------------------|
| 530 | 42.4151888 | 83.4989267 | 5 | 529 | 530 | 1848 | 1.00 |
| 531 | 42.4284503 | 83.4853531 | 5 | 530 | 531 | 1848 | 1.00 |
| 532 | 42.4416807 | 83.4717257 | 5 | 531 | 532 | 1848 | 1.00 |
| 533 | 42.4548849 | 83.4580354 | 5 | 532 | 533 | 1848 | 1.00 |
| 534 | 42.4680548 | 83.4442956 | 5 | 533 | 534 | 1848 | 1.00 |
| 535 | 42.4811937 | 83.4304930 | 5 | 534 | 535 | 1848 | 1.00 |
| 536 | 42.4943032 | 83.4166365 | 5 | 535 | 536 | 1848 | 1.00 |
| 537 | 42.5073783 | 83.4027239 | 5 | 536 | 537 | 1848 | 1.00 |
| 538 | 42.5204258 | 83.3887550 | 5 | 537 | 538 | 1848 | 1.00 |
| 539 | 42.5334406 | 83.3747301 | 5 | 538 | 539 | 1848 | 1.00 |
| 540 | 42.5464245 | 83.3606513 | 5 | 539 | 540 | 1848 | 1.00 |
| 541 | 42.5593790 | 83.3465163 | 5 | 540 | 541 | 1848 | 1.00 |
| 542 | 42.5723027 | 83.3323251 | 5 | 541 | 542 | 1848 | 1.00 |
| 543 | 42.5851921 | 83.3180846 | 5 | 542 | 543 | 1848 | 1.00 |
| 544 | 42.5980506 | 83.3037834 | 5 | 543 | 544 | 1848 | 1.00 |
| 545 | 42.6108750 | 83.2894238 | 5 | 544 | 545 | 1848 | 1.00 |
| 546 | 42.6236701 | 83.2750104 | 5 | 545 | 546 | 1848 | 1.00 |
| 547 | 42.6364295 | 83.2605430 | 5 | 546 | 547 | 1848 | 1.00 |
| 548 | 42.6491596 | 83.2460172 | 5 | 547 | 548 | 1848 | 1.00 |
| 549 | 42.6618607 | 83.2314443 | 5 | 548 | 549 | 1848 | 1.00 |
| 550 | 42.6745210 | 83.2168153 | 5 | 549 | 550 | 1848 | 1.00 |
| 551 | 42.6871555 | 83.2021233 | 5 | 550 | 551 | 1848 | 1.00 |
| 552 | 42.6997526 | 83.1873820 | 5 | 551 | 552 | 1848 | 1.00 |
| 553 | 42.7123190 | 83.1725867 | 5 | 552 | 553 | 1848 | 1.00 |
| 554 | 42.7248564 | 83.1577398 | 5 | 553 | 554 | 1848 | 1.00 |
| 555 | 42.7373531 | 83.1428323 | 5 | 554 | 555 | 1848 | 1.00 |
| 556 | 42.7498208 | 83.1278753 | 5 | 555 | 556 | 1848 | 1.00 |
| 557 | 42.7622546 | 83.1128645 | 5 | 556 | 557 | 1848 | 1.00 |
| 558 | 42.7746543 | 83.0977952 | 5 | 557 | 558 | 1848 | 1.00 |
| 559 | 42.7870235 | 83.0826788 | 5 | 558 | 559 | 1848 | 1.00 |
| 560 | 42.7993538 | 83.0675040 | 5 | 559 | 560 | 1848 | 1.00 |
| 561 | 42.8116535 | 83.0522753 | 5 | 560 | 561 | 1848 | 1.00 |
| 562 | 42.8239161 | 83.0369972 | 5 | 561 | 562 | 1848 | 1.00 |
| 563 | 42.8361481 | 83.0216630 | 5 | 562 | 563 | 1848 | 1.00 |
| 564 | 42.8483446 | 83.0062749 | 5 | 563 | 564 | 1848 | 1.00 |
| 565 | 42.8605089 | 82.9908351 | 5 | 564 | 565 | 1848 | 1.00 |

The French Continental Shelf

| FP | Latitude °S | Longitude °E | Method Article 76 | From FP | To FP | Distance (m) | Distance (Miles) |
|-----|-------------|--------------|-------------------|---------|-------|--------------|------------------|
| 566 | 42.8726328 | 82.9753414 | 5 | 565 | 566 | 1848 | 1.00 |
| 567 | 42.8847280 | 82.9597983 | 5 | 566 | 567 | 1848 | 1.00 |
| 568 | 42.8967844 | 82.9441968 | 5 | 567 | 568 | 1848 | 1.00 |
| 569 | 42.9088120 | 82.9285436 | 5 | 568 | 569 | 1848 | 1.00 |
| 570 | 42.9207993 | 82.9128388 | 5 | 569 | 570 | 1848 | 1.00 |
| 571 | 42.9327528 | 82.8970846 | 5 | 570 | 571 | 1848 | 1.00 |
| 572 | 42.9446727 | 82.8812743 | 5 | 571 | 572 | 1848 | 1.00 |
| 573 | 42.9565540 | 82.8654168 | 5 | 572 | 573 | 1848 | 1.00 |
| 574 | 42.9684017 | 82.8495009 | 5 | 573 | 574 | 1848 | 1.00 |
| 575 | 42.9802140 | 82.8335378 | 5 | 574 | 575 | 1848 | 1.00 |
| 576 | 42.9919944 | 82.8175186 | 5 | 575 | 576 | 1848 | 1.00 |
| 577 | 43.0037346 | 82.8014477 | 5 | 576 | 577 | 1848 | 1.00 |
| 578 | 43.0154363 | 82.7853297 | 5 | 577 | 578 | 1848 | 1.00 |
| 579 | 43.0271078 | 82.7691623 | 5 | 578 | 579 | 1848 | 1.00 |
| 580 | 43.0387375 | 82.7529387 | 5 | 579 | 580 | 1848 | 1.00 |
| 581 | 43.0503386 | 82.7366657 | 5 | 580 | 581 | 1848 | 1.00 |
| 582 | 43.0618947 | 82.7203389 | 5 | 581 | 582 | 1848 | 1.00 |
| 583 | 43.0734222 | 82.7039671 | 5 | 582 | 583 | 1848 | 1.00 |
| 584 | 43.0849081 | 82.6875391 | 5 | 583 | 584 | 1848 | 1.00 |
| 585 | 43.0963588 | 82.6710618 | 5 | 584 | 585 | 1848 | 1.00 |
| 586 | 43.1077762 | 82.6545350 | 5 | 585 | 586 | 1848 | 1.00 |
| 587 | 43.1191503 | 82.6379544 | 5 | 586 | 587 | 1848 | 1.00 |
| 588 | 43.1304910 | 82.6213288 | 5 | 587 | 588 | 1848 | 1.00 |
| 589 | 43.1417934 | 82.6046493 | 5 | 588 | 589 | 1848 | 1.00 |
| 590 | 43.1530608 | 82.5879249 | 5 | 589 | 590 | 1848 | 1.00 |
| 591 | 43.1642916 | 82.5711444 | 5 | 590 | 591 | 1848 | 1.00 |
| 592 | 43.1754775 | 82.5543167 | 5 | 591 | 592 | 1848 | 1.00 |
| 593 | 43.1866319 | 82.5374374 | 5 | 592 | 593 | 1848 | 1.00 |
| 594 | 43.1977513 | 82.5205154 | 5 | 593 | 594 | 1848 | 1.00 |
| 595 | 43.2088293 | 82.5035394 | 5 | 594 | 595 | 1848 | 1.00 |
| 596 | 43.2198674 | 82.4865119 | 5 | 595 | 596 | 1848 | 1.00 |
| 597 | 43.2308691 | 82.4694439 | 5 | 596 | 597 | 1848 | 1.00 |
| 598 | 43.2418359 | 82.4523175 | 5 | 597 | 598 | 1848 | 1.00 |
| 599 | 43.2527613 | 82.4351485 | 5 | 598 | 599 | 1848 | 1.00 |
| 600 | 43.2636471 | 82.4179255 | 5 | 599 | 600 | 1848 | 1.00 |
| 601 | 43.2744964 | 82.4006576 | 5 | 600 | 601 | 1848 | 1.00 |

The French Continental Shelf

| FP | Latitude °S | Longitude °E | Method Article 76 | From FP | To FP | Distance (m) | Distance (Miles) |
|-----|-------------|--------------|-------------------|---------|-------|--------------|------------------|
| 602 | 43.2853060 | 82.3833404 | 5 | 601 | 602 | 1848 | 1.00 |
| 603 | 43.2960792 | 82.3659804 | 5 | 602 | 603 | 1848 | 1.00 |
| 604 | 43.3068128 | 82.3485643 | 5 | 603 | 604 | 1848 | 1.00 |
| 605 | 43.3175051 | 82.3311056 | 5 | 604 | 605 | 1848 | 1.00 |
| 606 | 43.3281628 | 82.3135974 | 5 | 605 | 606 | 1848 | 1.00 |
| 607 | 43.3387792 | 82.2960376 | 5 | 606 | 607 | 1848 | 1.00 |
| 608 | 43.3493528 | 82.2784374 | 5 | 607 | 608 | 1848 | 1.00 |
| 609 | 43.3598917 | 82.2607877 | 5 | 608 | 609 | 1848 | 1.00 |
| 610 | 43.3703895 | 82.2430931 | 5 | 609 | 610 | 1848 | 1.00 |
| 611 | 43.3808494 | 82.2253492 | 5 | 610 | 611 | 1848 | 1.00 |
| 612 | 43.3912666 | 82.2075580 | 5 | 611 | 612 | 1848 | 1.00 |
| 613 | 43.4016475 | 82.1897220 | 5 | 612 | 613 | 1848 | 1.00 |
| 614 | 43.4119891 | 82.1718365 | 5 | 613 | 614 | 1848 | 1.00 |
| 615 | 43.4222879 | 82.1539084 | 5 | 614 | 615 | 1848 | 1.00 |
| 616 | 43.4325456 | 82.1359286 | 5 | 615 | 616 | 1848 | 1.00 |
| 617 | 43.4427640 | 82.1179084 | 5 | 616 | 617 | 1848 | 1.00 |
| 618 | 43.4529463 | 82.0998366 | 5 | 617 | 618 | 1848 | 1.00 |
| 619 | 43.4630860 | 82.0817243 | 5 | 618 | 619 | 1848 | 1.00 |
| 620 | 43.4713594 | 82.0668482 | 4 (a) (ii) | 619 | 620 | 1515 | 0.82 |
| 621 | 43.4691448 | 82.0638658 | 4 (a) (ii) | 620 | 621 | 344 | 0.19 |
| 622 | 42.9273185 | 81.4308567 | 4 (a) (ii) | 621 | 622 | 79186 | 42.76 |
| 623 | 42.8176537 | 80.0923804 | 4 (a) (ii) | 622 | 623 | 110042 | 59.42 |
| 624 | 42.8226547 | 80.0707781 | 4 (a) (ii) | 623 | 624 | 1852 | 1.00 |
| 625 | 42.8273843 | 80.0490614 | 4 (a) (ii) | 624 | 625 | 1852 | 1.00 |
| 626 | 42.8318440 | 80.0272390 | 4 (a) (ii) | 625 | 626 | 1852 | 1.00 |
| 627 | 42.8360307 | 80.0053134 | 4 (a) (ii) | 626 | 627 | 1852 | 1.00 |
| 628 | 42.8399444 | 79.9832957 | 4 (a) (ii) | 627 | 628 | 1852 | 1.00 |
| 629 | 42.8435819 | 79.9611882 | 4 (a) (ii) | 628 | 629 | 1852 | 1.00 |
| 630 | 42.8469449 | 79.9389998 | 4 (a) (ii) | 629 | 630 | 1852 | 1.00 |
| 631 | 42.8500301 | 79.9167350 | 4 (a) (ii) | 630 | 631 | 1852 | 1.00 |
| 632 | 42.8528391 | 79.8944029 | 4 (a) (ii) | 631 | 632 | 1852 | 1.00 |
| 633 | 42.8553672 | 79.8720079 | 4 (a) (ii) | 632 | 633 | 1852 | 1.00 |
| 634 | 42.8576176 | 79.8495568 | 4 (a) (ii) | 633 | 634 | 1852 | 1.00 |
| 635 | 42.8595887 | 79.8270562 | 4 (a) (ii) | 634 | 635 | 1852 | 1.00 |
| 636 | 42.8612772 | 79.8045130 | 4 (a) (ii) | 635 | 636 | 1852 | 1.00 |
| 637 | 42.8626864 | 79.7819338 | 4 (a) (ii) | 636 | 637 | 1852 | 1.00 |

The French Continental Shelf

| FP | Latitude °S | Longitude °E | Method Article 76 | From FP | To FP | Distance (m) | Distance (Miles) |
|-----|-------------|--------------|-------------------|---------|-------|--------------|------------------|
| 638 | 42.8638131 | 79.7593232 | 4 (a) (ii) | 637 | 638 | 1852 | 1.00 |
| 639 | 42.8646573 | 79.7366924 | 4 (a) (ii) | 638 | 639 | 1852 | 1.00 |
| 640 | 42.8652207 | 79.7140437 | 4 (a) (ii) | 639 | 640 | 1852 | 1.00 |
| 641 | 42.8655015 | 79.6913859 | 4 (a) (ii) | 640 | 641 | 1852 | 1.00 |
| 642 | 42.8655015 | 79.6687237 | 4 (a) (ii) | 641 | 642 | 1852 | 1.00 |
| 643 | 42.8652174 | 79.6460659 | 4 (a) (ii) | 642 | 643 | 1852 | 1.00 |
| 644 | 42.8646524 | 79.6234171 | 4 (a) (ii) | 643 | 644 | 1852 | 1.00 |
| 645 | 42.8638049 | 79.6007841 | 4 (a) (ii) | 644 | 645 | 1852 | 1.00 |
| 646 | 42.8626748 | 79.5781757 | 4 (a) (ii) | 645 | 646 | 1852 | 1.00 |
| 647 | 42.8612639 | 79.5555966 | 4 (a) (ii) | 646 | 647 | 1852 | 1.00 |
| 648 | 42.8595721 | 79.5330533 | 4 (a) (ii) | 647 | 648 | 1852 | 1.00 |
| 649 | 42.8575994 | 79.5105528 | 4 (a) (ii) | 648 | 649 | 1852 | 1.00 |
| 650 | 42.8553474 | 79.4881039 | 4 (a) (ii) | 649 | 650 | 1852 | 1.00 |
| 651 | 42.8528144 | 79.4657089 | 4 (a) (ii) | 650 | 651 | 1852 | 1.00 |
| 652 | 42.8500053 | 79.4433768 | 4 (a) (ii) | 651 | 652 | 1852 | 1.00 |
| 653 | 42.8469168 | 79.4211120 | 4 (a) (ii) | 652 | 653 | 1852 | 1.00 |
| 654 | 42.8435522 | 79.3989236 | 4 (a) (ii) | 653 | 654 | 1852 | 1.00 |
| 655 | 42.8399114 | 79.3768184 | 4 (a) (ii) | 654 | 655 | 1852 | 1.00 |
| 656 | 42.8359944 | 79.3548006 | 4 (a) (ii) | 655 | 656 | 1852 | 1.00 |
| 657 | 42.8318060 | 79.3328773 | 4 (a) (ii) | 656 | 657 | 1852 | 1.00 |
| 658 | 42.8273446 | 79.3110549 | 4 (a) (ii) | 657 | 658 | 1852 | 1.00 |
| 659 | 42.8226117 | 79.2893404 | 4 (a) (ii) | 658 | 659 | 1852 | 1.00 |
| 660 | 42.8176090 | 79.2677382 | 4 (a) (ii) | 659 | 660 | 1852 | 1.00 |
| 661 | 42.8123381 | 79.2462572 | 4 (a) (ii) | 660 | 661 | 1852 | 1.00 |
| 662 | 42.8067988 | 79.2249020 | 4 (a) (ii) | 661 | 662 | 1852 | 1.00 |
| 663 | 42.8009960 | 79.2036771 | 4 (a) (ii) | 662 | 663 | 1852 | 1.00 |
| 664 | 42.7949298 | 79.1825936 | 4 (a) (ii) | 663 | 664 | 1852 | 1.00 |
| 665 | 42.7886015 | 79.1616516 | 4 (a) (ii) | 664 | 665 | 1852 | 1.00 |
| 666 | 42.7820130 | 79.1408624 | 4 (a) (ii) | 665 | 666 | 1852 | 1.00 |
| 667 | 42.7751672 | 79.1202281 | 4 (a) (ii) | 666 | 667 | 1852 | 1.00 |
| 668 | 42.7680659 | 79.0997577 | 4 (a) (ii) | 667 | 668 | 1852 | 1.00 |
| 669 | 42.7607090 | 79.0794558 | 4 (a) (ii) | 668 | 669 | 1852 | 1.00 |
| 670 | 42.7531012 | 79.0593268 | 4 (a) (ii) | 669 | 670 | 1852 | 1.00 |
| 671 | 42.7452442 | 79.0393774 | 4 (a) (ii) | 670 | 671 | 1852 | 1.00 |
| 672 | 42.7371379 | 79.0196145 | 4 (a) (ii) | 671 | 672 | 1852 | 1.00 |
| 673 | 42.7287888 | 79.0000402 | 4 (a) (ii) | 672 | 673 | 1852 | 1.00 |

The French Continental Shelf

| FP | Latitude °S | Longitude °E | Method Article 76 | From FP | To FP | Distance (m) | Distance (Miles) |
|-----------|--------------------|---------------------|--------------------------|----------------|--------------|---------------------|-------------------------|
| 674 | 42.7201968 | 78.9806658 | 4 (a) (ii) | 673 | 674 | 1852 | 1.00 |
| 675 | 42.7113634 | 78.9614935 | 4 (a) (ii) | 674 | 675 | 1852 | 1.00 |
| 676 | 42.7022936 | 78.9425278 | 4 (a) (ii) | 675 | 676 | 1852 | 1.00 |
| 677 | 42.3868909 | 78.2666466 | 4 (a) (ii) | 676 | 677 | 65648 | 35.45 |
| 678 | 42.0502931 | 77.0108109 | 1 | 677 | 678 | 110224 | 59.52 |