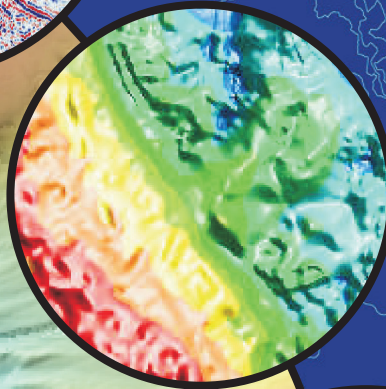
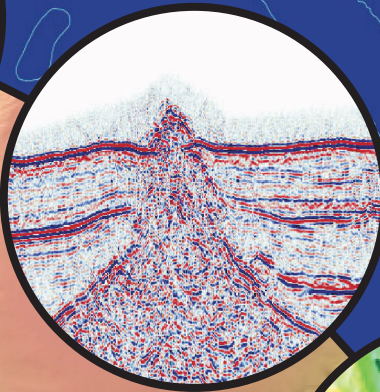
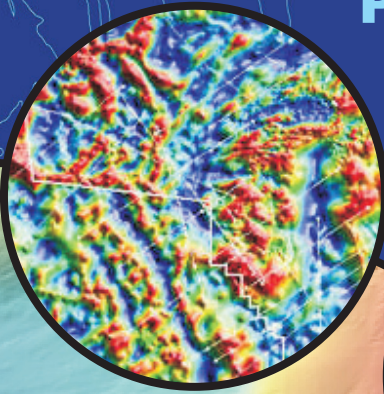




IRELAND

**Submission to the Commission on
the Limits of the Continental Shelf
pursuant to Article 76, paragraph 8 of
the United Nations Convention
on the Law of the Sea 1982
in respect of the area abutting the
Porcupine Abyssal Plain**



PART I
Executive Summary

ISBN 0-9542479-1-4

© Government of Ireland 2005

Magnetic anomaly
image of part of
the PAP

Part of seismic
line PAD95-13
from the PAP

Bouguer gravity
anomaly image of
part of the PAP

Bathymetric image of the
Porcupine Abyssal Plain (PAP)
created from merged GEBCO 2003,
INSS 2000-2003 and PAD 1996
bathymetry datasets

M/V Akademik
Shatskiy which acquired
the PAD 1995 seismic
survey of the Irish
Continental Margin

TABLE OF CONTENTS

1. Introduction	2
2. Outer limits of Ireland’s extended continental shelf in the area abutting the Porcupine Abyssal Plain	3
3. Specific provisions of Article 76 invoked to support the submission	3
4. Names of Commission Members who provided advice during the preparation of the submission	3
5. Endpoints of the outer limit, overlapping claims and unresolved maritime boundaries	4
6. Detailed description of the outer limits of Ireland’s extended continental shelf in the area abutting the Porcupine Abyssal Plain.....	5
7. State Bodies Responsible for the Preparation of the Continental Shelf Submission of Ireland.....	5

LIST OF FIGURES

Figure 1.1: History of Continental Shelf Designations by Ireland 1968-1989	2
Figure 1.2: The outer limits of Ireland’s extended continental shelf in the area abutting the Porcupine Abyssal Plain (bathymetry from GEBCO 2003)	3
Figure 1.3: Zonation of Ireland’s extended continental shelf	4
Figure 1.4: Details of the formula lines used to define the outer limit of Ireland’s extended continental shelf in the area abutting the Porcupine Abyssal Plain (bathymetry from PAD 1996 and INSS 2000-2003 bathymetric surveys)	5

APPENDICES

Appendix 1.1: List of coordinates defining the outer limits of Ireland’s extended continental shelf in the area abutting the Porcupine Abyssal Plain.....	6
---	---

1. Introduction

Ireland first formally claimed a limited area of continental shelf in 1968 by means of designation by statutory order made pursuant to the Continental Shelf Act 1968. This was followed by a series of westward-progressing continental shelf designations during the 1970s, culminating in the 1976 designation (yellow on map) which reached 25°W. This was subsequently modified by the 1989 designation (Statutory Instrument No. 141 of 1989 – grey on map) which gave effect to the Agreement of 7 November 1988 between Ireland and the UK on delimitation of areas of the continental shelf between the two countries.

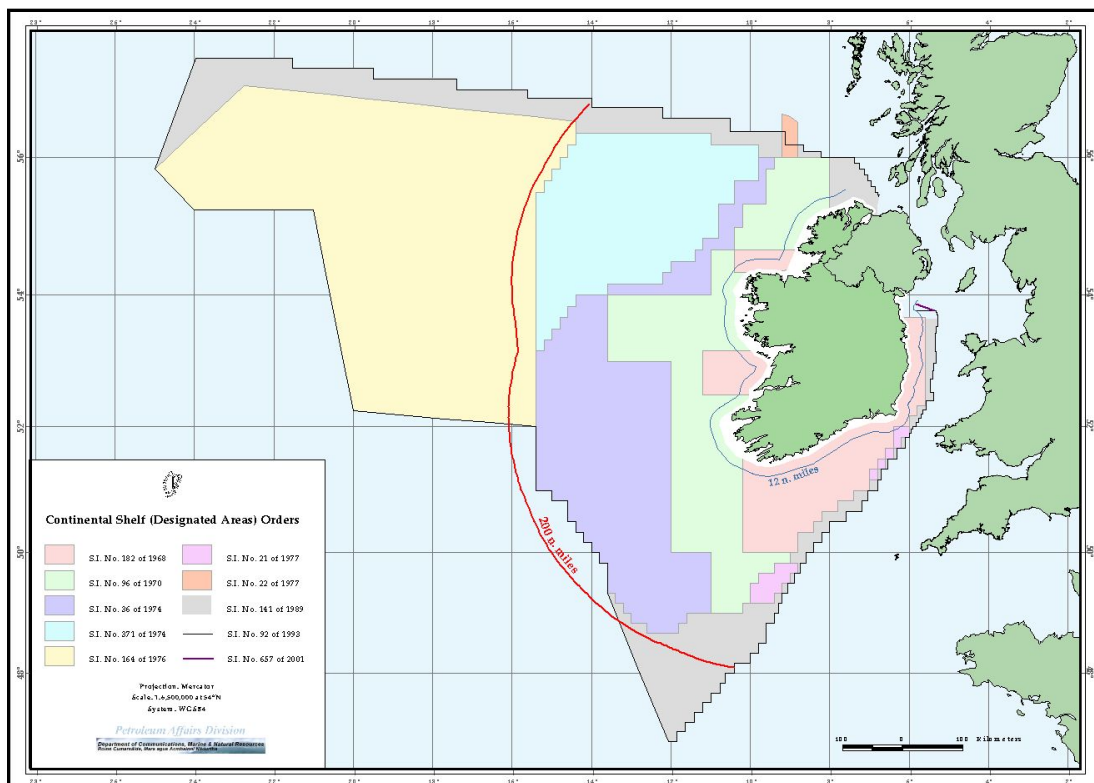


Figure 1.1: History of Continental Shelf Designations by Ireland 1968-1989

Work on preparing Ireland's submission to the United Nations Commission on the Limits of the Continental Shelf (CLCS) began in 1994 with budget sanction given for a Continental Margin seismic survey in 1995 and a Continental Margin bathymetric survey in 1996.

Ireland ratified the 1982 United Nations Convention on the Law of the Sea (UNCLOS) on 21 June 1996 and it entered into force with respect to Ireland on 21 July 1996.

Data processing, analysis, interpretation and compilation have continued until 2005, in parallel with two sets of quadrilateral discussions with neighbouring States to the NW (Faroe Islands/Denmark, Iceland, Ireland and the UK) and to the SW (France, Ireland, Spain and the UK).

2. Outer limits of Ireland's extended continental shelf in the area abutting the Porcupine Abyssal Plain

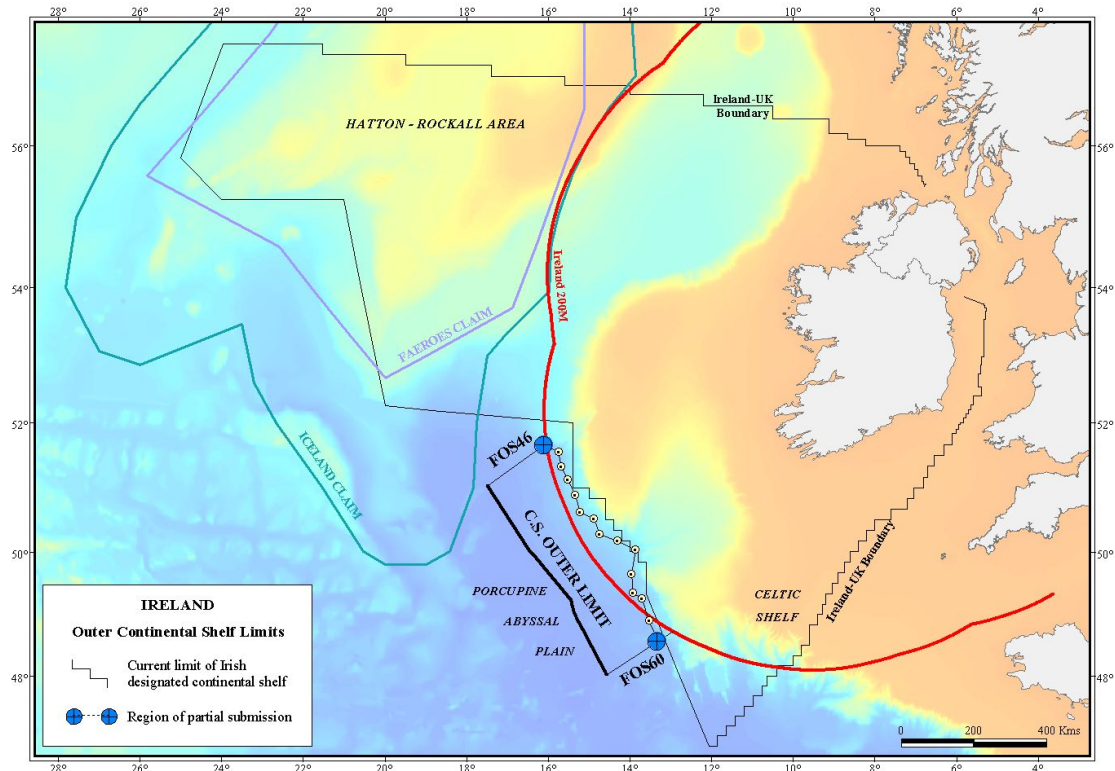


Figure 1.2: The outer limits of Ireland's extended continental shelf in the area abutting the Porcupine Abyssal Plain (bathymetry from GEBCO 2003)

The present submission deals only with the outer limits of the continental shelf in the area abutting the Porcupine Abyssal Plain, from foot of slope (FOS) profile 46 to FOS profile 60.

3. Specific provisions of Article 76 invoked to support the submission

The outer limits contained in this submission are based on the provisions of both Article 76.4 (a)(i) and 76.4 (a)(ii) of UNCLOS.

4. Names of Commission Members who provided advice during the preparation of the submission

Ireland was assisted in the preparation of this submission by Mr. Peter F. Croker, member of the Commission on the Limits of the Continental Shelf (1997-present). No advice was provided by any other members of the Commission.

5. Endpoints of the outer limit, overlapping claims and unresolved maritime boundaries

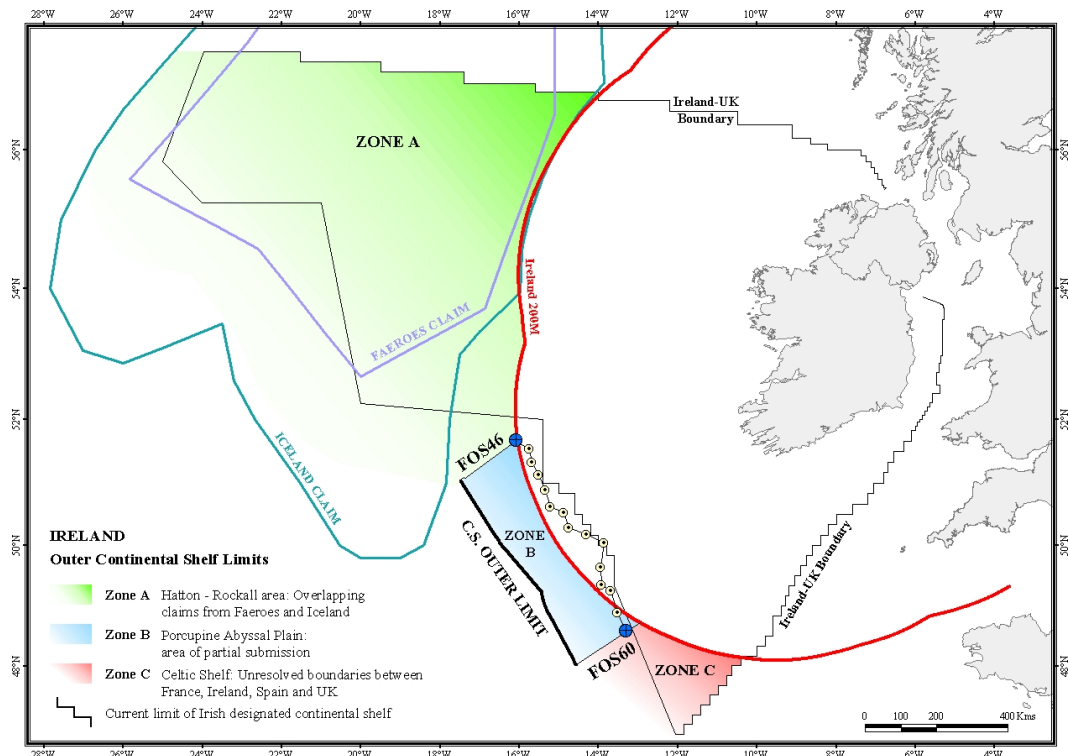


Figure 1.3: Zonation of Ireland's extended continental shelf

Due to ongoing discussions with neighbouring States with regard to portions of the Irish Designated Continental Shelf Area to the northwest and the southwest, Ireland has elected to split its submission. The partial submission is made in respect of the area abutting the Porcupine Abyssal Plain (marked as Zone B in Figure 1.3 above). It constitutes the first part of Ireland's complete submission of information on the limits of its continental shelf beyond 200 nautical miles from the baselines from which the breadth of the territorial sea is measured.

Having regard to Article 76, paragraph 10 and Article 9 of Annex II of UNCLOS, and in accordance with paragraph 3 of Annex I to the Rules of Procedure of the Commission, in order not to prejudice unresolved questions relating to the delimitation of boundaries between Ireland and some of its neighbours in other portions of the extended continental shelf claimed by Ireland, submissions in respect of those other portions (Zone A and Zone C) will be made at a later date.

Details of the most northerly and southerly points (endpoints) of the outer limit in respect of which this submission is made, and the corresponding foot of slope points from which they are measured (FOS46 & FOS60), have been communicated to the governments of the Faroe Islands/Denmark, France, Iceland, Spain and the UK. It is the view of Ireland that the

consideration of this partial submission by the CLCS will not prejudice the question of delimitation of boundaries in either Zones A or C.

6. Detailed description of the outer limits of Ireland's extended continental shelf in the area abutting the Porcupine Abyssal Plain

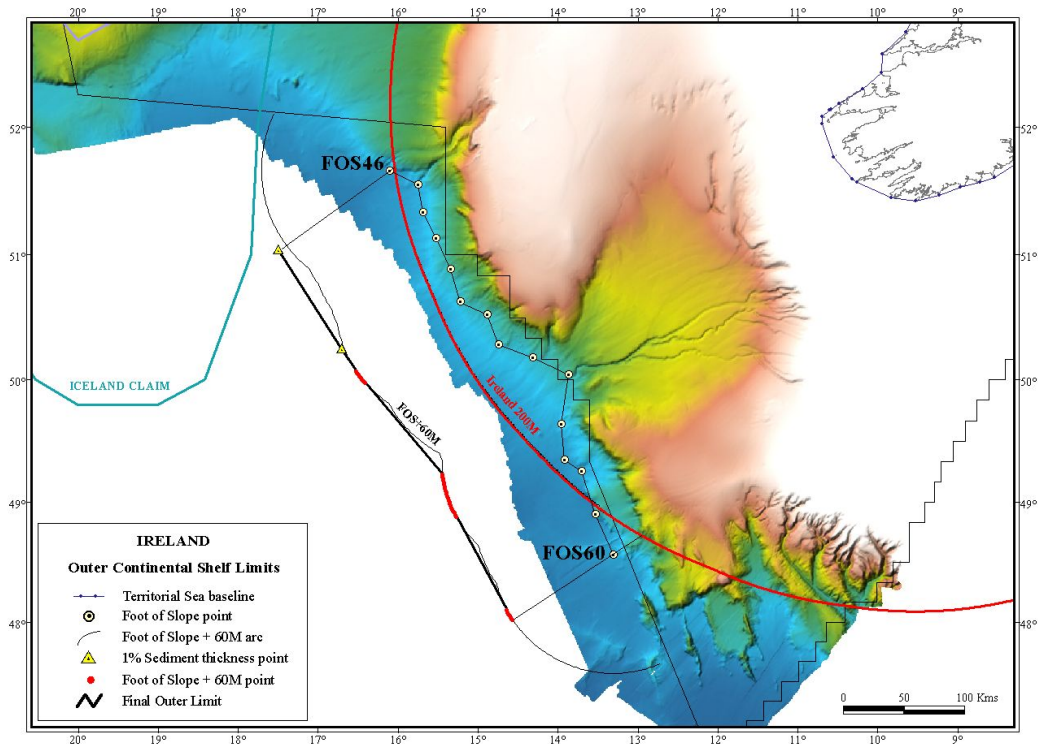


Figure 1.4: Details of the formula lines used to define the outer limit of Ireland's extended continental shelf in the area abutting the Porcupine Abyssal Plain (bathymetry from PAD 1996 and INSS 2000-2003 bathymetric surveys)

A total of 15 foot of slope points (FOS 46 to FOS 60) have been picked along the Porcupine Ridge-Goban Spur margin. From these FOS points an outer limit based on the FOS+60 nautical miles (M) formula (Hedberg formula) has been generated. On seismic lines PAD95-12 and PAD95-13 (corresponding to FOS profiles 46 and 50 respectively), sufficient sediment thickness has been demonstrated to allow the application of the 1% sediment thickness formula (Gardiner or Irish formula). The final outer limits consist of a series of straight lines, as provided for in the Convention being not more than 60M long, which join points along the Gardiner or Hedberg lines. The coordinates of these points and the lengths of the connecting straight lines are listed in Appendix 1.1.

7. State Bodies Responsible for the Preparation of the Continental Shelf Submission of Ireland

This submission, together with all maps, figures, enclosures, appendices and databases were prepared by the Petroleum Affairs Division of the Department of Communications, Marine and Natural Resources of Ireland, which has statutory responsibility for Ireland's Continental Shelf.

Appendix 1.1: List of coordinates defining the outer limits of Ireland's extended continental shelf in the area abutting the Porcupine Abyssal Plain

All coordinates relate to the WGS 84 geodetic reference system.

ID	Latitude (°N)	Longitude (°W)	Method	From ID	To ID	Distance (m)	Distance (M)
1	51.0376718	-17.4926083	1% Sediment Thickness				
2	50.2478896	-16.7035439	1% Sediment Thickness	1	2	104085.29	56.20
3	50.0691902	-16.5126452	FOS + 60M	2	3	24107.91	13.02
4	50.0554937	-16.4979397	FOS + 60M	3	4	1851.94	1.00
5	50.0419552	-16.4828907	FOS + 60M	4	5	1851.88	1.00
6	50.0285778	-16.4675026	FOS + 60M	5	6	1851.88	1.00
7	50.0153645	-16.4517798	FOS + 60M	6	7	1851.91	1.00
8	50.0023213	-16.4357247	FOS + 60M	7	8	1851.84	1.00
9	49.9894483	-16.4193439	FOS + 60M	8	9	1851.95	1.00
10	49.9767514	-16.4026397	FOS + 60M	9	10	1851.97	1.00
11	49.2097194	-15.4275948	FOS + 60M	10	11	110665.59	59.75
12	49.1932741	-15.4236130	FOS + 60M	11	12	1851.83	1.00
13	49.1768732	-15.4192158	FOS + 60M	12	13	1851.94	1.00
14	49.1605229	-15.4144053	FOS + 60M	13	14	1851.90	1.00
15	49.1442276	-15.4091816	FOS + 60M	14	15	1851.88	1.00
16	49.1279917	-15.4035514	FOS + 60M	15	16	1851.78	1.00
17	49.1118183	-15.3975125	FOS + 60M	16	17	1851.91	1.00
18	49.0957133	-15.3910671	FOS + 60M	17	18	1851.87	1.00
19	49.0796798	-15.3842174	FOS + 60M	18	19	1851.97	1.00
20	49.0637237	-15.3769680	FOS + 60M	19	20	1851.86	1.00
21	49.0478481	-15.3693211	FOS + 60M	20	21	1851.90	1.00
22	49.0320589	-15.3612745	FOS + 60M	21	22	1851.86	1.00
23	49.0163592	-15.3528370	FOS + 60M	22	23	1851.80	1.00
24	49.0007521	-15.3440066	FOS + 60M	23	24	1852.00	1.00
25	48.9852450	-15.3347876	FOS + 60M	24	25	1851.81	1.00
26	48.9698395	-15.3251846	FOS + 60M	25	26	1851.85	1.00
27	48.9545401	-15.3151976	FOS + 60M	26	27	1851.94	1.00
28	48.9393514	-15.3048333	FOS + 60M	27	28	1851.88	1.00
29	48.9242780	-15.2940895	FOS + 60M	28	29	1851.94	1.00
30	48.9093243	-15.2829750	FOS + 60M	29	30	1851.78	1.00
31	48.8944919	-15.2714901	FOS + 60M	30	31	1851.96	1.00
32	48.8797885	-15.2596368	FOS + 60M	31	32	1851.84	1.00
33	48.0979064	-14.6273868	FOS + 60M	32	33	98708.61	53.30
34	48.0833284	-14.6153696	FOS + 60M	33	34	1851.74	1.00
35	48.0688832	-14.6029975	FOS + 60M	34	35	1851.96	1.00
36	48.0545769	-14.5902751	FOS + 60M	35	36	1851.94	1.00
37	48.0404143	-14.5772069	FOS + 60M	36	37	1851.81	1.00
38	48.0263984	-14.5637951	FOS + 60M	37	38	1851.80	1.00
39	48.0170407	-14.5545155	FOS + 60M	38	39	1249.70	0.67