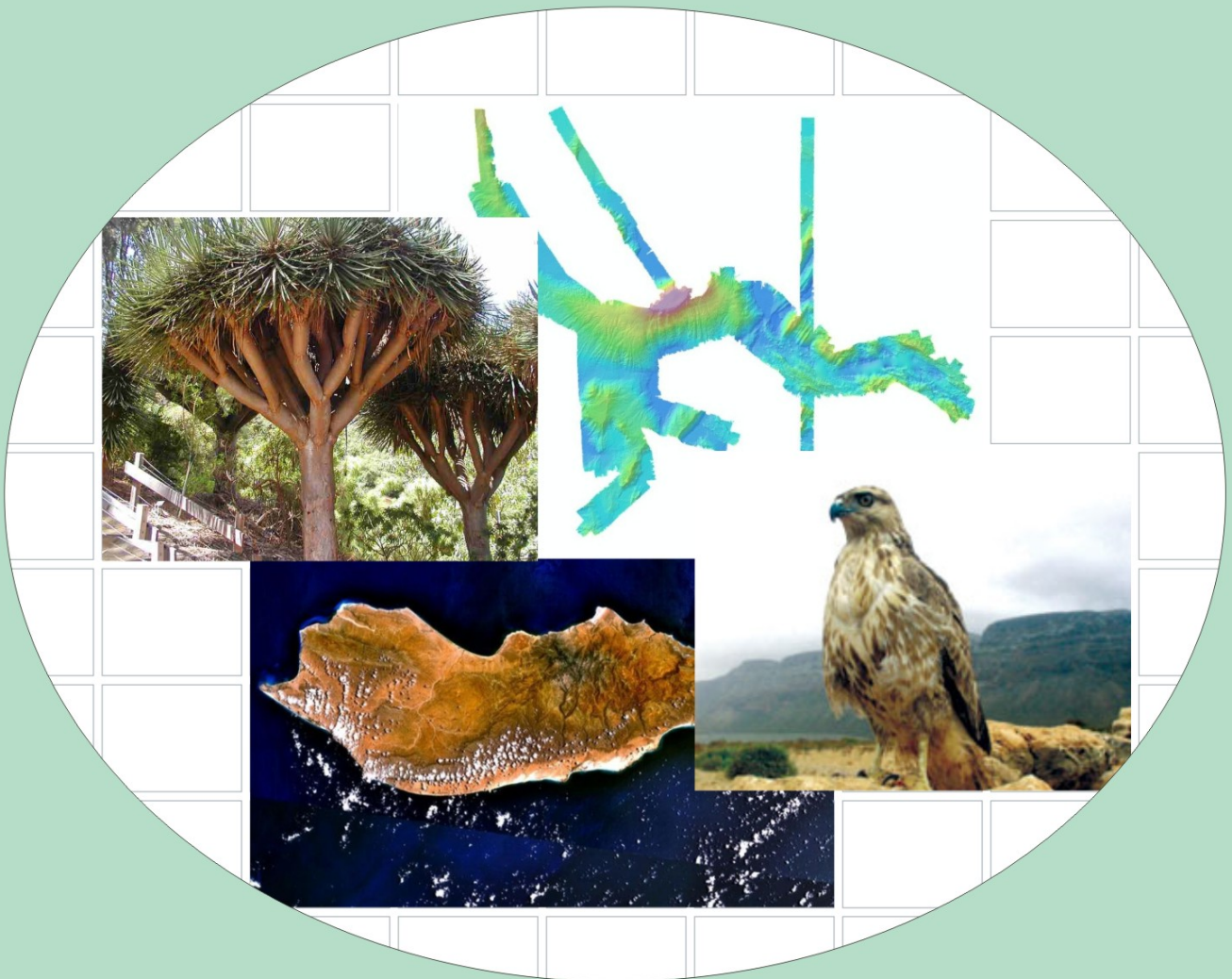


**Submission to the
Commission on the Limits of the Continental Shelf
pursuant to Article 76, paragraph 8
of the
United Nations Convention on the Law of the Sea 1982
in respect of
South East of Socotra Island**



Republic of Yemen

Executive Summary – Revised Amended

Republic of Yemen

Executive Summary – Revised Amended

TABLE OF CONTENTS

1 Introduction	2
2 Provisions of Article 76 invoked	2
3 Names of any Commission members who provided advice during the preparation of the submission.....	2
4 Absence of disputes	2
5 State bodies responsible for the preparation of the submission.....	2
6 Amended submission	2
7 Advisors to the Government of the Republic of Yemen	3
8 Detailed description of the outer limit of the continental shelf south east of Socotra Island	3

LIST OF FIGURES

Figure 1 Outer limit of the continental shelf south east of Socotra Island ...	3
---	----------

1. Introduction

This revised amended Submission to the Commission on the Limits of the Continental Shelf is made by the Republic of Yemen pursuant to Article 76, paragraph 8 of the Convention in support of the establishment of the outer limit of the continental shelf.

This submission represents a single and full case to be made by the Republic of Yemen to the Commission on the Limits of the Continental Shelf in respect of continental shelf area beyond 200M from the base lines from which the breadth of the territorial sea is measured.

The submission deals with the outer limit of the continental shelf appurtenant to the Republic of Yemen in the area south east of Socotra Island.

2. Provisions of Article 76 invoked

The outer limits contained in this submission are based on the provisions of Article 76.4 (a)(ii), 76.4 (b), 76.7.

3. Names of any Commission members who provided advice during the preparation of the submission

No advice was provided by any member of the Commission.

4. Absence of disputes

In accordance with paragraph 2(a) of Annex 1 to the Commission's Rules of Procedure, the Republic of Yemen wishes to inform the Commission that the area of continental shelf that is the subject of this submission is not the subject of any dispute between them and any other state.

5. State bodies responsible for the preparation of the Submission

This submission, together with all maps, figures, enclosures, appendices and digital databases was prepared by the Ministry of Transport, Yemen Geological Survey & Mineral Resources Board, Sanaa University, Yemen Remote Sensing Centre and the Oil Exploration and Production Board.

6. Revised amended submission

This submission contains a number of revised amendments made following the examination of additional datasets available in the region. It replaces in its entirety any previous materials submitted in respect of the continental shelf of the Republic of Yemen.

7. Advisors to the Government of the Republic of Yemen

National Oceanography Centre, Southampton provided advice to the Republic of Yemen during the preparation of the original submission. Maritime Zone Solutions Limited provided advice during the preparation of this document.

8. Description of the outer limit of the continental shelf south east of Socotra Island

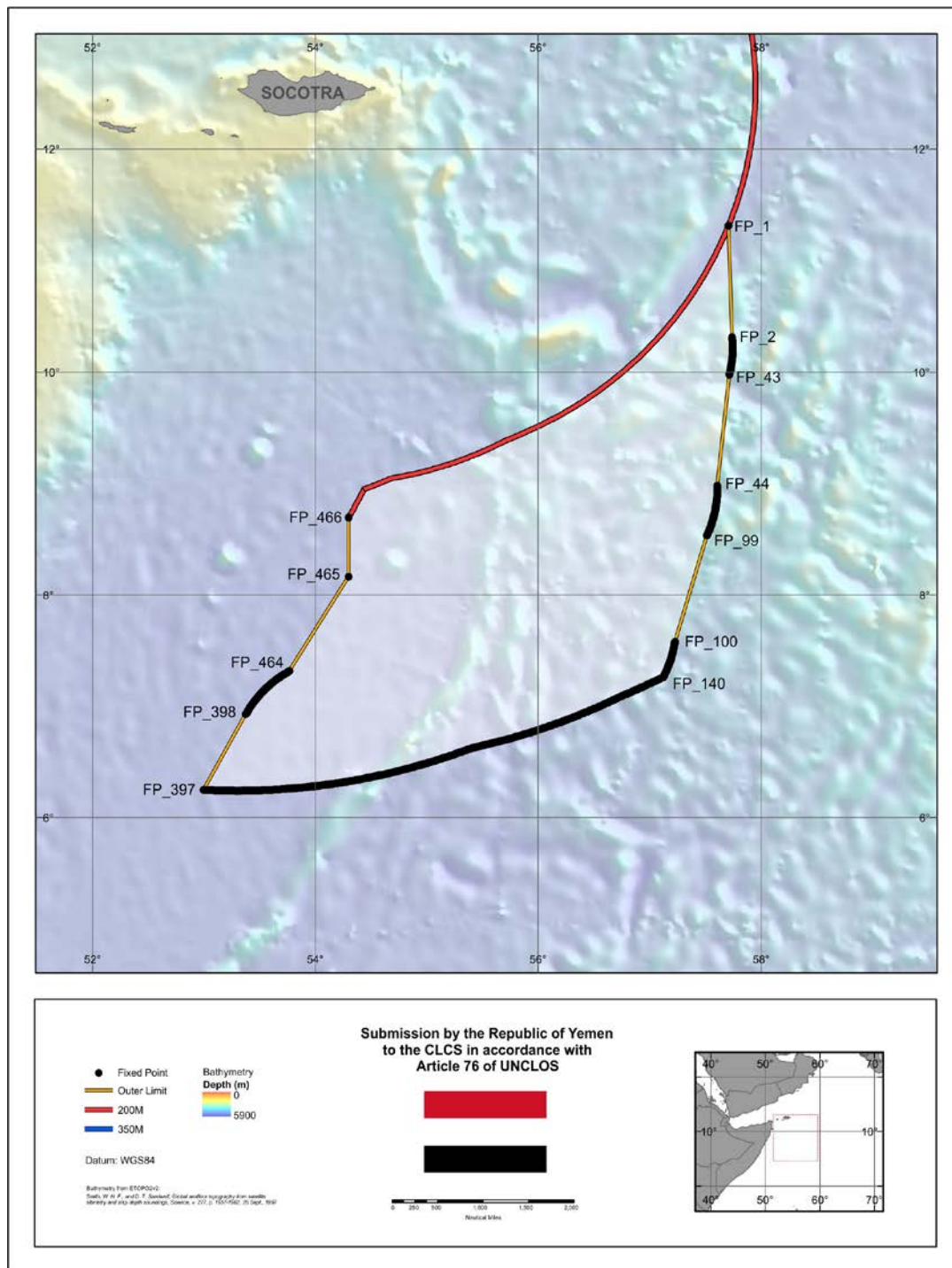


Figure 1 Outer limit of the continental shelf south east of Socotra Island.

The outer limit of Yemen's continental shelf, in accordance with Article 76, is defined by 466 fixed points (illustrated in Figure 1 and summarised in Table 1), of which 207 fixed points are defined by the distance formula [Article 76, paragraph 4 (a) (ii)], 257 fixed points are defined by the 350M and 2 fixed points defined by the 200M limit.

Table 1 List of coordinates and method of determination for each fixed point describing the outer limit. All coordinates relate to the WGS84 geodetic reference system.

FP	Latitude (N)	Longitude (E)	Method of construction	Distance between FPs (M)
1	11.3127389	57.7075968	200M	0
2	10.3171206	57.7392469	FOS + 60M	59.494
3	10.3087886	57.7400701	FOS + 60M	0.5
4	10.3004501	57.7408231	FOS + 60M	0.5
5	10.2921057	57.7415059	FOS + 60M	0.5
6	10.2837559	57.7421185	FOS + 60M	0.5
7	10.2754014	57.7426607	FOS + 60M	0.5
8	10.2670426	57.7431326	FOS + 60M	0.5
9	10.2586803	57.7435341	FOS + 60M	0.5
10	10.2503149	57.7438653	FOS + 60M	0.5
11	10.2419471	57.7441260	FOS + 60M	0.5
12	10.2335774	57.7443164	FOS + 60M	0.5
13	10.2252064	57.7444363	FOS + 60M	0.5
14	10.2168348	57.7444858	FOS + 60M	0.5
15	10.2084630	57.7444648	FOS + 60M	0.5
16	10.2000917	57.7443735	FOS + 60M	0.5
17	10.1917214	57.7442117	FOS + 60M	0.5
18	10.1833527	57.7439796	FOS + 60M	0.5
19	10.1749862	57.7436771	FOS + 60M	0.5
20	10.1666225	57.7433042	FOS + 60M	0.5
21	10.1582622	57.7428611	FOS + 60M	0.5
22	10.1499058	57.7423476	FOS + 60M	0.5
23	10.1415540	57.7417640	FOS + 60M	0.5
24	10.1332072	57.7411101	FOS + 60M	0.5
25	10.1248662	57.7403861	FOS + 60M	0.5
26	10.1165313	57.7395921	FOS + 60M	0.5
27	10.1082034	57.7387280	FOS + 60M	0.5
28	10.0998828	57.7377940	FOS + 60M	0.5
29	10.0915703	57.7367901	FOS + 60M	0.5
30	10.0832663	57.7357164	FOS + 60M	0.5
31	10.0749714	57.7345729	FOS + 60M	0.5
32	10.0666863	57.7333598	FOS + 60M	0.5
33	10.0584115	57.7320772	FOS + 60M	0.5

FP	Latitude (N)	Longitude (E)	Method of construction	Distance between FPs (M)
34	10.0501475	57.7307251	FOS + 60M	0.5
35	10.0418950	57.7293036	FOS + 60M	0.5
36	10.0336545	57.7278129	FOS + 60M	0.5
37	10.0254266	57.7262530	FOS + 60M	0.5
38	10.0172118	57.7246241	FOS + 60M	0.5
39	10.0090108	57.7229263	FOS + 60M	0.5
40	10.0008241	57.7211597	FOS + 60M	0.5
41	9.9926522	57.7193244	FOS + 60M	0.5
42	9.9844957	57.7174206	FOS + 60M	0.5
43	9.9763553	57.7154484	FOS + 60M	0.5
44	8.9804673	57.6079406	FOS + 60M	59.817
45	8.9720961	57.6080851	FOS + 60M	0.5
46	8.9637240	57.6081595	FOS + 60M	0.5
47	8.9553516	57.6081636	FOS + 60M	0.5
48	8.9469794	57.6080977	FOS + 60M	0.5
49	8.9386081	57.6079615	FOS + 60M	0.5
50	8.9302381	57.6077553	FOS + 60M	0.5
51	8.9218702	57.6074789	FOS + 60M	0.5
52	8.9135049	57.6071324	FOS + 60M	0.5
53	8.9051427	57.6067159	FOS + 60M	0.5
54	8.8967842	57.6062293	FOS + 60M	0.5
55	8.8884301	57.6056727	FOS + 60M	0.5
56	8.8800808	57.6050462	FOS + 60M	0.5
57	8.8717371	57.6043498	FOS + 60M	0.5
58	8.8633994	57.6035835	FOS + 60M	0.5
59	8.8550683	57.6027475	FOS + 60M	0.5
60	8.8467444	57.6018417	FOS + 60M	0.5
61	8.8384284	57.6008662	FOS + 60M	0.5
62	8.8301207	57.5998212	FOS + 60M	0.5
63	8.8218219	57.5987066	FOS + 60M	0.5
64	8.8135327	57.5975227	FOS + 60M	0.5
65	8.8052535	57.5962693	FOS + 60M	0.5
66	8.7969850	57.5949468	FOS + 60M	0.5
67	8.7887278	57.5935551	FOS + 60M	0.5
68	8.7804823	57.5920943	FOS + 60M	0.5
69	8.7722493	57.5905646	FOS + 60M	0.5
70	8.7640292	57.5889660	FOS + 60M	0.5
71	8.7558226	57.5872987	FOS + 60M	0.5
72	8.7476302	57.5855628	FOS + 60M	0.5
73	8.7394524	57.5837585	FOS + 60M	0.5
74	8.7312898	57.5818857	FOS + 60M	0.5
75	8.7231430	57.5799448	FOS + 60M	0.5

FP	Latitude (N)	Longitude (E)	Method of construction	Distance between FPs (M)
76	8.7150126	57.5779358	FOS + 60M	0.5
77	8.7068991	57.5758589	FOS + 60M	0.5
78	8.6988031	57.5737142	FOS + 60M	0.5
79	8.6907251	57.5715018	FOS + 60M	0.5
80	8.6826657	57.5692220	FOS + 60M	0.5
81	8.6746255	57.5668749	FOS + 60M	0.5
82	8.6666050	57.5644606	FOS + 60M	0.5
83	8.6586048	57.5619794	FOS + 60M	0.5
84	8.6506255	57.5594313	FOS + 60M	0.5
85	8.6426675	57.5568167	FOS + 60M	0.5
86	8.6347314	57.5541356	FOS + 60M	0.5
87	8.6268179	57.5513883	FOS + 60M	0.5
88	8.6189273	57.5485749	FOS + 60M	0.5
89	8.6110604	57.5456957	FOS + 60M	0.5
90	8.6032175	57.5427508	FOS + 60M	0.5
91	8.5953994	57.5397405	FOS + 60M	0.5
92	8.5876064	57.5366650	FOS + 60M	0.5
93	8.5798392	57.5335245	FOS + 60M	0.5
94	8.5720983	57.5303192	FOS + 60M	0.5
95	8.5643842	57.5270493	FOS + 60M	0.5
96	8.5566974	57.5237151	FOS + 60M	0.5
97	8.5490386	57.5203168	FOS + 60M	0.5
98	8.5414081	57.5168546	FOS + 60M	0.5
99	8.5338067	57.5133289	FOS + 60M	0.5
100	7.5793213	57.2261007	FOS + 60M	59.508
101	7.5710477	57.2248111	FOS + 60M	0.5
102	7.5627852	57.2234525	FOS + 60M	0.5
103	7.5545343	57.2220251	FOS + 60M	0.5
104	7.5462954	57.2205289	FOS + 60M	0.5
105	7.5380694	57.2189639	FOS + 60M	0.5
106	7.5298566	57.2173304	FOS + 60M	0.5
107	7.5216576	57.2156285	FOS + 60M	0.5
108	7.5134731	57.2138582	FOS + 60M	0.5
109	7.5053036	57.2120197	FOS + 60M	0.5
110	7.4971496	57.2101131	FOS + 60M	0.5
111	7.4890118	57.2081386	FOS + 60M	0.5
112	7.4808906	57.2060963	FOS + 60M	0.5
113	7.4727867	57.2039864	FOS + 60M	0.5
114	7.4647007	57.2018089	FOS + 60M	0.5
115	7.4566330	57.1995641	FOS + 60M	0.5
116	7.4485842	57.1972521	FOS + 60M	0.5
117	7.4405549	57.1948731	FOS + 60M	0.5

FP	Latitude (N)	Longitude (E)	Method of construction	Distance between FPs (M)
118	7.4325457	57.1924272	FOS + 60M	0.5
119	7.4245571	57.1899147	FOS + 60M	0.5
120	7.4165896	57.1873356	FOS + 60M	0.5
121	7.4086439	57.1846902	FOS + 60M	0.5
122	7.4007204	57.1819787	FOS + 60M	0.5
123	7.3928197	57.1792012	FOS + 60M	0.5
124	7.3849423	57.1763580	FOS + 60M	0.5
125	7.3770889	57.1734492	FOS + 60M	0.5
126	7.3692599	57.1704751	FOS + 60M	0.5
127	7.3614559	57.1674358	FOS + 60M	0.5
128	7.3536775	57.1643316	FOS + 60M	0.5
129	7.3459251	57.1611628	FOS + 60M	0.5
130	7.3381993	57.1579294	FOS + 60M	0.5
131	7.3305006	57.1546318	FOS + 60M	0.5
132	7.3228297	57.1512701	FOS + 60M	0.5
133	7.3151869	57.1478447	FOS + 60M	0.5
134	7.3075728	57.1443557	FOS + 60M	0.5
135	7.2999880	57.1408035	FOS + 60M	0.5
136	7.2924330	57.1371881	FOS + 60M	0.5
137	7.2849084	57.1335100	FOS + 60M	0.5
138	7.2774145	57.1297693	FOS + 60M	0.5
139	7.2699520	57.1259664	FOS + 60M	0.5
140	7.2621154	57.1218860	350M	0.527
141	7.2485425	57.0934178	350M	1.881
142	7.2413897	57.0782547	350M	1
143	7.2342795	57.0630718	350M	1
144	7.2272120	57.0478691	350M	1
145	7.2201872	57.0326469	350M	1
146	7.2132052	57.0174051	350M	1
147	7.2062661	57.0021439	350M	1
148	7.1999699	56.9881974	350M	0.913
149	7.1960846	56.9799605	350M	0.543
150	7.1889658	56.9647831	350M	1
151	7.1818897	56.9495860	350M	1
152	7.1748563	56.9343692	350M	1
153	7.1678657	56.9191328	350M	1
154	7.1609179	56.9038771	350M	1
155	7.1540130	56.8886021	350M	1
156	7.1471511	56.8733079	350M	1
157	7.1403322	56.8579947	350M	1
158	7.1335564	56.8426626	350M	1
159	7.1268237	56.8273116	350M	1

FP	Latitude (N)	Longitude (E)	Method of construction	Distance between FPs (M)
160	7.1201341	56.8119420	350M	1
161	7.1134878	56.7965538	350M	1
162	7.1068848	56.7811472	350M	1
163	7.1003251	56.7657222	350M	1
164	7.0938088	56.7502791	350M	1
165	7.0902869	56.7418819	350M	0.543
166	7.0836296	56.7281457	350M	0.911
167	7.0763603	56.7130437	350M	1
168	7.0691335	56.6979215	350M	1
169	7.0619492	56.6827792	350M	1
170	7.0548075	56.6676170	350M	1
171	7.0477085	56.6524349	350M	1
172	7.0406522	56.6372332	350M	1
173	7.0336387	56.6220118	350M	1
174	7.0266679	56.6067710	350M	1
175	7.0197401	56.5915108	350M	1
176	7.0128552	56.5762314	350M	1
177	7.0060134	56.5609329	350M	1
178	6.9992145	56.5456153	350M	1
179	6.9924588	56.5302789	350M	1
180	6.9857462	56.5149238	350M	1
181	6.9790768	56.4995500	350M	1
182	6.9724507	56.4841578	350M	1
183	6.9658679	56.4687471	350M	1
184	6.9593284	56.4533182	350M	1
185	6.9528324	56.4378711	350M	1
186	6.9463799	56.4224060	350M	1
187	6.9399708	56.4069230	350M	1
188	6.9336054	56.3914222	350M	1
189	6.9272835	56.3759037	350M	1
190	6.9210053	56.3603677	350M	1
191	6.9147709	56.3448143	350M	1
192	6.9085802	56.3292436	350M	1
193	6.9024333	56.3136558	350M	1
194	6.8963303	56.2980509	350M	1
195	6.8902712	56.2824290	350M	1
196	6.8842561	56.2667904	350M	1
197	6.8782849	56.2511350	350M	1
198	6.8723579	56.2354631	350M	1
199	6.8664749	56.2197748	350M	1
200	6.8606361	56.2040702	350M	1
201	6.8548415	56.1883493	350M	1

FP	Latitude (N)	Longitude (E)	Method of construction	Distance between FPs (M)
202	6.8490911	56.1726124	350M	1
203	6.8433850	56.1568596	350M	1
204	6.8377233	56.1410909	350M	1
205	6.8321059	56.1253066	350M	1
206	6.8265330	56.1095067	350M	1
207	6.8210045	56.0936913	350M	1
208	6.8155205	56.0778606	350M	1
209	6.8100811	56.0620147	350M	1
210	6.8046863	56.0461537	350M	1
211	6.7993361	56.0302778	350M	1
212	6.7940306	56.0143871	350M	1
213	6.7887698	55.9984816	350M	1
214	6.7835538	55.9825616	350M	1
215	6.7783826	55.9666271	350M	1
216	6.7732562	55.9506783	350M	1
217	6.7681747	55.9347153	350M	1
218	6.7631382	55.9187382	350M	1
219	6.7581466	55.9027472	350M	1
220	6.7532001	55.8867423	350M	1
221	6.7482986	55.8707237	350M	1
222	6.7434421	55.8546916	350M	1
223	6.7386308	55.8386460	350M	1
224	6.7338647	55.8225871	350M	1
225	6.7291437	55.8065150	350M	1
226	6.7244680	55.7904298	350M	1
227	6.7198376	55.7743317	350M	1
228	6.7152524	55.7582207	350M	1
229	6.7107127	55.7420971	350M	1
230	6.7062183	55.7259609	350M	1
231	6.7017693	55.7098122	350M	1
232	6.6973658	55.6936512	350M	1
233	6.6930077	55.6774781	350M	1
234	6.6886952	55.6612929	350M	1
235	6.6844283	55.6450957	350M	1
236	6.6802069	55.6288868	350M	1
237	6.6760312	55.6126661	350M	1
238	6.6719011	55.5964340	350M	1
239	6.6678167	55.5801903	350M	1
240	6.6637780	55.5639354	350M	1
241	6.6597851	55.5476693	350M	1
242	6.6558380	55.5313922	350M	1
243	6.6519367	55.5151042	350M	1

FP	Latitude (N)	Longitude (E)	Method of construction	Distance between FPs (M)
244	6.6480812	55.4988053	350M	1
245	6.6442716	55.4824959	350M	1
246	6.6405079	55.4661758	350M	1
247	6.6367902	55.4498454	350M	1
248	6.6331184	55.4335047	350M	1
249	6.6294927	55.4171538	350M	1
250	6.6262306	55.4022540	350M	0.911
251	6.6230919	55.3939008	350M	0.533
252	6.6172348	55.3782108	350M	1
253	6.6114219	55.3625046	350M	1
254	6.6056532	55.3467822	350M	1
255	6.5999288	55.3310438	350M	1
256	6.5942488	55.3152895	350M	1
257	6.5886131	55.2995195	350M	1
258	6.5830219	55.2837339	350M	1
259	6.5774751	55.2679328	350M	1
260	6.5719729	55.2521162	350M	1
261	6.5665152	55.2362845	350M	1
262	6.5611020	55.2204375	350M	1
263	6.5557336	55.2045756	350M	1
264	6.5504098	55.1886988	350M	1
265	6.5451308	55.1728073	350M	1
266	6.5398965	55.1569011	350M	1
267	6.5347070	55.1409804	350M	1
268	6.5295624	55.1250453	350M	1
269	6.5244626	55.1090960	350M	1
270	6.5194078	55.0931325	350M	1
271	6.5143980	55.0771550	350M	1
272	6.5094332	55.0611637	350M	1
273	6.5045134	55.0451585	350M	1
274	6.4996387	55.0291398	350M	1
275	6.4948092	55.0131075	350M	1
276	6.4900248	54.9970619	350M	1
277	6.4852856	54.9810030	350M	1
278	6.4805917	54.9649310	350M	1
279	6.4759430	54.9488460	350M	1
280	6.4713397	54.9327481	350M	1
281	6.4667817	54.9166375	350M	1
282	6.4622691	54.9005142	350M	1
283	6.4578019	54.8843784	350M	1
284	6.4533802	54.8682303	350M	1
285	6.4490040	54.8520699	350M	1

FP	Latitude (N)	Longitude (E)	Method of construction	Distance between FPs (M)
286	6.4446733	54.8358974	350M	1
287	6.4403882	54.8197130	350M	1
288	6.4361487	54.8035166	350M	1
289	6.4319548	54.7873086	350M	1
290	6.4278065	54.7710889	350M	1
291	6.4237040	54.7548577	350M	1
292	6.4196472	54.7386152	350M	1
293	6.4156361	54.7223615	350M	1
294	6.4116709	54.7060966	350M	1
295	6.4077515	54.6898208	350M	1
296	6.4038779	54.6735342	350M	1
297	6.4000502	54.6572368	350M	1
298	6.3962685	54.6409288	350M	1
299	6.3925326	54.6246104	350M	1
300	6.3888428	54.6082817	350M	1
301	6.3851990	54.5919427	350M	1
302	6.3816012	54.5755937	350M	1
303	6.3780494	54.5592347	350M	1
304	6.3745438	54.5428659	350M	1
305	6.3710843	54.5264874	350M	1
306	6.3676709	54.5100994	350M	1
307	6.3643037	54.4937019	350M	1
308	6.3609827	54.4772951	350M	1
309	6.3577079	54.4608792	350M	1
310	6.3544794	54.4444542	350M	1
311	6.3512972	54.4280202	350M	1
312	6.3481612	54.4115775	350M	1
313	6.3450716	54.3951261	350M	1
314	6.3420284	54.3786662	350M	1
315	6.3390315	54.3621979	350M	1
316	6.3360810	54.3457213	350M	1
317	6.3331770	54.3292366	350M	1
318	6.3303194	54.3127438	350M	1
319	6.3275082	54.2962432	350M	1
320	6.3247436	54.2797348	350M	1
321	6.3220255	54.2632188	350M	1
322	6.3193539	54.2466953	350M	1
323	6.3167288	54.2301644	350M	1
324	6.3141504	54.2136263	350M	1
325	6.3116185	54.1970811	350M	1
326	6.3091333	54.1805289	350M	1
327	6.3066947	54.1639698	350M	1

FP	Latitude (N)	Longitude (E)	Method of construction	Distance between FPs (M)
328	6.3043027	54.1474040	350M	1
329	6.3019575	54.1308316	350M	1
330	6.2996589	54.1142528	350M	1
331	6.2974070	54.0976677	350M	1
332	6.2952019	54.0810763	350M	1
333	6.2930435	54.0644789	350M	1
334	6.2909319	54.0478755	350M	1
335	6.2888671	54.0312663	350M	1
336	6.2868490	54.0146515	350M	1
337	6.2848778	53.9980311	350M	1
338	6.2829534	53.9814052	350M	1
339	6.2810759	53.9647741	350M	1
340	6.2792452	53.9481379	350M	1
341	6.2774614	53.9314966	350M	1
342	6.2757245	53.9148504	350M	1
343	6.2740344	53.8981994	350M	1
344	6.2723913	53.8815438	350M	1
345	6.2707952	53.8648837	350M	1
346	6.2692459	53.8482192	350M	1
347	6.2677437	53.8315505	350M	1
348	6.2662884	53.8148777	350M	1
349	6.2648800	53.7982008	350M	1
350	6.2635187	53.7815202	350M	1
351	6.2622043	53.7648358	350M	1
352	6.2609370	53.7481478	350M	1
353	6.2597167	53.7314563	350M	1
354	6.2585434	53.7147615	350M	1
355	6.2574172	53.6980636	350M	1
356	6.2563380	53.6813625	350M	1
357	6.2553058	53.6646586	350M	1
358	6.2543208	53.6479518	350M	1
359	6.2533828	53.6312423	350M	1
360	6.2524918	53.6145303	350M	1
361	6.2516480	53.5978159	350M	1
362	6.2508513	53.5810992	350M	1
363	6.2501016	53.5643803	350M	1
364	6.2493991	53.5476595	350M	1
365	6.2487437	53.5309367	350M	1
366	6.2481354	53.5142122	350M	1
367	6.2475742	53.4974861	350M	1
368	6.2470601	53.4807584	350M	1
369	6.2465932	53.4640294	350M	1

FP	Latitude (N)	Longitude (E)	Method of construction	Distance between FPs (M)
370	6.2461734	53.4472992	350M	1
371	6.2458008	53.4305678	350M	1
372	6.2454752	53.4138355	350M	1
373	6.2451969	53.3971024	350M	1
374	6.2449656	53.3803685	350M	1
375	6.2447816	53.3636341	350M	1
376	6.2446446	53.3468992	350M	1
377	6.2445548	53.3301640	350M	1
378	6.2445122	53.3134286	350M	1
379	6.2445167	53.2966932	350M	1
380	6.2445684	53.2799578	350M	1
381	6.2446672	53.2632227	350M	1
382	6.2448132	53.2464879	350M	1
383	6.2450063	53.2297535	350M	1
384	6.2452465	53.2130198	350M	1
385	6.2455340	53.1962868	350M	1
386	6.2458685	53.1795547	350M	1
387	6.2462502	53.1628235	350M	1
388	6.2466790	53.1460935	350M	1
389	6.2471550	53.1293648	350M	1
390	6.2476780	53.1126374	350M	1
391	6.2482483	53.0959116	350M	1
392	6.2488656	53.0791874	350M	1
393	6.2495300	53.0624650	350M	1
394	6.2502416	53.0457445	350M	1
395	6.2510003	53.0290260	350M	1
396	6.2518060	53.0123098	350M	1
397	6.2526002	52.9967462	FOS + 60M	0.931
398	6.9321557	53.3786050	FOS + 60M	46.546
399	6.9394282	53.3827581	FOS + 60M	0.5
400	6.9466657	53.3869718	FOS + 60M	0.5
401	6.9538679	53.3912458	FOS + 60M	0.5
402	6.9610342	53.3955799	FOS + 60M	0.5
403	6.9681641	53.3999737	FOS + 60M	0.5
404	6.9752571	53.4044270	FOS + 60M	0.5
405	6.9823128	53.4089394	FOS + 60M	0.5
406	6.9893306	53.4135106	FOS + 60M	0.5
407	6.9963100	53.4181403	FOS + 60M	0.5
408	7.0032507	53.4228282	FOS + 60M	0.5
409	7.0101520	53.4275739	FOS + 60M	0.5
410	7.0170135	53.4323772	FOS + 60M	0.5
411	7.0238347	53.4372377	FOS + 60M	0.5

FP	Latitude (N)	Longitude (E)	Method of construction	Distance between FPs (M)
412	7.0306152	53.4421551	FOS + 60M	0.5
413	7.0373544	53.4471289	FOS + 60M	0.5
414	7.0440520	53.4521590	FOS + 60M	0.5
415	7.0507074	53.4572448	FOS + 60M	0.5
416	7.0573202	53.4623862	FOS + 60M	0.5
417	7.0638898	53.4675827	FOS + 60M	0.5
418	7.0704160	53.4728339	FOS + 60M	0.5
419	7.0768981	53.4781395	FOS + 60M	0.5
420	7.0833358	53.4834992	FOS + 60M	0.5
421	7.0897286	53.4889125	FOS + 60M	0.5
422	7.0960760	53.4943791	FOS + 60M	0.5
423	7.1023777	53.4998987	FOS + 60M	0.5
424	7.1086331	53.5054707	FOS + 60M	0.5
425	7.1148419	53.5110949	FOS + 60M	0.5
426	7.1210035	53.5167708	FOS + 60M	0.5
427	7.1271177	53.5224981	FOS + 60M	0.5
428	7.1331838	53.5282763	FOS + 60M	0.5
429	7.1392017	53.5341051	FOS + 60M	0.5
430	7.1451707	53.5399841	FOS + 60M	0.5
431	7.1510905	53.5459128	FOS + 60M	0.5
432	7.1569606	53.5518908	FOS + 60M	0.5
433	7.1627808	53.5579177	FOS + 60M	0.5
434	7.1685504	53.5639931	FOS + 60M	0.5
435	7.1742693	53.5701167	FOS + 60M	0.5
436	7.1799369	53.5762878	FOS + 60M	0.5
437	7.1855529	53.5825062	FOS + 60M	0.5
438	7.1911168	53.5887714	FOS + 60M	0.5
439	7.1966283	53.5950829	FOS + 60M	0.5
440	7.2020870	53.6014404	FOS + 60M	0.5
441	7.2074926	53.6078433	FOS + 60M	0.5
442	7.2128445	53.6142912	FOS + 60M	0.5
443	7.2181426	53.6207838	FOS + 60M	0.5
444	7.2233863	53.6273204	FOS + 60M	0.5
445	7.2285754	53.6339008	FOS + 60M	0.5
446	7.2337094	53.6405243	FOS + 60M	0.5
447	7.2387880	53.6471906	FOS + 60M	0.5
448	7.2438109	53.6538992	FOS + 60M	0.5
449	7.2487777	53.6606497	FOS + 60M	0.5
450	7.2536881	53.6674415	FOS + 60M	0.5
451	7.2585416	53.6742741	FOS + 60M	0.5
452	7.2633381	53.6811472	FOS + 60M	0.5
453	7.2680771	53.6880602	FOS + 60M	0.5

FP	Latitude (N)	Longitude (E)	Method of construction	Distance between FPs (M)
454	7.2727583	53.6950127	FOS + 60M	0.5
455	7.2773813	53.7020041	FOS + 60M	0.5
456	7.2819460	53.7090340	FOS + 60M	0.5
457	7.2864519	53.7161019	FOS + 60M	0.5
458	7.2908987	53.7232073	FOS + 60M	0.5
459	7.2952861	53.7303497	FOS + 60M	0.5
460	7.2996138	53.7375286	FOS + 60M	0.5
461	7.3038816	53.7447435	FOS + 60M	0.5
462	7.3080890	53.7519938	FOS + 60M	0.5
463	7.3122359	53.7592792	FOS + 60M	0.5
464	7.3163219	53.7665991	FOS + 60M	0.5
465	8.1651646	54.2978825	FOS + 60M	59.757
466	8.6955406	54.3010491	200M	31.674