



EXECUTIVE SUMMARY

# CONTINENTAL SHELF AND UNCLOS ARTICLE 76

BRAZILIAN PARTIAL REVISED SUBMISSION  
TO THE COMMISSION ON THE LIMITS OF  
THE CONTINENTAL SHELF

A bathymetric map of the Brazilian Southern Region continental shelf, showing the ocean floor topography with colors ranging from blue (deep) to red (shallow).

BRAZILIAN  
SOUTHERN  
REGION



EXECUTIVE SUMMARY

# CONTINENTAL SHELF AND UNCLOS ARTICLE 76

BRAZILIAN PARTIAL REVISED SUBMISSION  
TO THE COMMISSION ON THE LIMITS OF  
THE CONTINENTAL SHELF

BRAZILIAN  
SOUTHERN  
REGION



## Table of contents

1. Introduction	3
2. Provisions of Article 76 invoked to support the Submission	4
3. Nonexistence of maritime disputes	5
4. Technical advice provided	6
5. Form	7
6. General description of the continental margin and base of the continental slope	8
7. Identification of the points of the foot of the continental slope	9
8. Participant bodies	10
9. Outer limit of the continental shelf	10

# 1. Introduction

1. The Federative Republic of Brazil (hereinafter referred to as Brazil) signed the United Nations Convention on the Law of the Sea (UNCLOS) on December 10, 1982, during the Closing Session of the Third United Nations Conference on the Law of the Sea, and it was ratified on December 22, 1988. The Convention became effective for Brazil on November 16, 1994.
2. On May 17, 2004, after approximately 17 years of studies, Brazil made its Submission to the Commission on the Limits of the Continental Platform (CLCS) seeking the recognition of the extension of its continental shelf as the natural prolongation of its land territory, up to the outer limits of the continental margin, beyond the limit of 200 M, as set out in article 76 (4) and (6) of the United Nations Convention on the Law of the Sea (UNCLOS).
3. In the Brazilian Submission, the continental margin was divided into three large areas: Equatorial Continental Margin, Oriental Continental Margin and Meridional Continental Margin.
4. During the Submission analysis by the CLCS between August 2004 and March 2007, Brazil presented an Addendum to the Executive Summary, which modified the originally submitted outer limit.
5. On April 4, 2007, the CLCS adopted, with amendments, the recommendations made on March 23, 2007 by the Subcommittee established to analyse the Brazilian Submission<sup>1</sup>.
6. From the date the recommendations made by the CLCS were unveiled, Brazil, after meticulous analysis, decided to prepare revised submissions along its margin, and with this purpose, new bathymetric and geophysical surveys were planned and accomplished.

---

1. The summary of recommendations received by Brazil is available online at the DOALOS's web site: <[http://www.un.org/depts/los/clcs\\_new/submissions\\_files/bra04/Summary\\_Recommendations\\_Brazil.pdf](http://www.un.org/depts/los/clcs_new/submissions_files/bra04/Summary_Recommendations_Brazil.pdf)>. Access on August 5, 2014.

7. With the studies and analyses arising from those new data, denominated LEPLAC PHASE 2, it was possible to perfect and expand the knowledge about the Brazilian continental margin, allowing production of updated technical information. The entire content of preexistent data and information, already submitted to CLCS, will be referred as LEPLAC PHASE 1.
8. In the context of the recommendations received from the CLCS, in 2007, this submission should be considered as a PARTIAL REVISED SUBMISSION in accordance with article 8 of Annex II of the UNCLOS, including only the Continental Meridional Margin portion denominated SOUTHERN REGION, that is delimited to the north by the São Paulo Ridge and to the south by the lateral maritime border with the Oriental Republic of Uruguay (Figure 1).
  - a. This submission will not harm the sovereign and legitimate exercise of Brazil in, opportunely, disagreeing with the recommendations received regarding other components outside the scope of the current submission.
9. When preparing this Partial Revised Submission, Brazil conforms with the Scientific and Technical Guidelines (STG) (CLCS/11) and with the CLCS Rules of Procedure (CLCS/40/Rev.1).

## 2. Provisions of Article 76 invoked to support the Submission

10. Brazil invoked article 76 (1), (3), 4(a) (i) (ii), 4(b), (5) and (7) of the UNCLOS to establish the outer limit of the continental shelf beyond the 200 M, on the area covered by this Partial Revised Submission.

# 3. Nonexistence of maritime disputes

11. The maritime boundary with the Oriental Republic of Uruguay was promulgated in the Brazilian domestic level through Decree 75,891 of June 23, 1975, and sent to the United Nations Secretary-General to make it public (UNITED NATIONS, 1972<sup>2</sup>). On July 29, 2005, its text was rectified by Exchange of Reversal Letters and the change was published in the Brazilian Official Gazette on October 29, 2005 (DOU, 2005).
12. Since there are no maritime disputes between Brazil and the Oriental Republic of Uruguay, Rule 46 and Annex I to the Rules of Procedure (CLCS/40/Rev.1) are not applied.

---

2. The exchange of notes constituting an agreement between the Government of Brazil and the Government of Uruguay on the definitive demarcation of the sea outlet of the River Chui and the lateral maritime border is available online on <<http://www.un.org/Depts/los/LEGISLATIONANDTREATIES/PDFFILES/TREATIES/BRA-URY1972MB.PDF>>. Access on August 16, 2014.



## 4. Technical advice provided

13. In accordance with Rule 45 (b) of the Rules of Procedure (CLCS/40/Rev.1) issued by the CLCS, Brazil declares that it received technical and scientific advice provided by the expert Jair Alberto Ribas Marques, a member of the CLCS.

# 5. Form

14. This Partial Revised Submission complies with the formal norms as provided in the Rules of Procedure, especially Rule 47, and paragraphs 9.1.3 to 9.1.6 of the STG, and it is made up of three parts: the Executive Summary (Part I), the Main Body (Part II), and Supporting Scientific and Technical Data (Part III).
15. The Main Body of this Submission contains: an introduction presenting the Revised Submission in the Southern Region, a detailed description of the regional geology, the methodologies applied to the implementation of the provisions of article 76 of the UNCLOS, besides three appendices denominated A, B and C.
16. Appendix A contains the information related with the acquisition and data processing of the LEPLAC PHASE 2 in the Southern Region, as well as information regarding the complementary data presented herein.
17. Appendix B contains the description of the bathymetric profiles and the foot of the continental slope points (FOS) that contributed to the definition of the outer limit.
18. Appendix C contains the description of the seismic sections and the points with 1% of sedimentary thickness used when defining the outer limit.
19. In addition, this Submission also has a tool for interactive visualization, based on the concept of the geographical information system (GIS), which stores several information that contribute to a better understanding of the scientific arguments presented.



## 6. General description of the continental margin and base of the continental slope

20. The northern limit of the continental margin of the Brazilian Southern Region is the São Paulo Ridge, the southern limit is the lateral maritime border with Uruguay, and the western limit is the onshore continental region. In geologic and geomorphological terms, the continental margin of the Southern Region is a typically volcanic margin, with strong sedimentary influence, what intensely contributed to its development and growth.
21. The margin in the south comprises the marginal sedimentary basins of Santos and Pelotas, and the following morphologic features that are classified as components or natural prolongations of the Brazilian continental margin: São Paulo Ridge, Santa Catarina Plateau, Rio Grande Terrace, Pelotas Sedimentary Drift, Rio Grande Cone, Rio Grande Sedimentary Drift, Chuí Sedimentary Drift and the Chuí Slide represented by a megaslide on the continental slope (Figure 2).
22. The base of the slope comprises a strip with width in the range of 15 km to 120 km and depths between 3,650 m and 4,600 m. The Base of the Slope was identified by means of a combination of bathymetric, geomorphological, geological and geophysical evidences, in accordance with the UNCLOS and paragraphs 5.2.1, 5.2.6, 5.2.9, and 5.4.4 to 5.4.6 of the STG.
23. The base of the slope and the outer limit in this Partial Submission were defined between latitudes 31°59'S and 36°S. The base of the slope and the outer limit in the region between latitudes 31°59'S and 27°S will be opportunely submitted in a subsequent submission.



## 7. Identification of the points of the foot of the continental slope

24. The FOS points were mathematically ascertained in acquired bathymetric profiles, in accordance with article 76 (4) (b) of the UNCLOS and paragraphs 5.1.3, 5.1.4, 5.2.2, 5.4.1 and 5.4.7 to 5.4.12 of the STG, at the point of maximum change in gradient in the area identified as the base of the slope.

## 8. Participant bodies

25. This Submission was prepared by LEPLAC, that has the legal responsibility for the surveys and studies dealing with the extension of the Brazilian Continental Shelf beyond 200 M. LEPLAC is a program of the Interministerial Commission for Sea Resources (*CIRM*), coordinated by the Ministry of Foreign Affairs, with participation of representatives of the Brazilian Navy Command, and of the Ministry of Mines and Energy, Ministry of Science, Technology and Innovation and Ministry of Education.
26. All the aforementioned bodies are responsible for the quality and fidelity of the entire material contained in this Partial Revised Submission.

## 9. Outer limit of the continental shelf

27. The outer limit (OL) of the continental shelf object of this Partial Revised Submission of the Brazilian Southern Region was obtained using the calculation routines of the GEOCAP® (Version 6.5.1) program, in accordance with article 76 (5) (7) of the UNCLOS combined with paragraphs 2.3.3, 2.3.5 and 2.3.10 of the STG.
28. The outer limit of the extended continental shelf beyond the 200 M in the Brazilian Southern Region and the outstanding morphological features are shown in Figure 2. A description of the points that form the outer limit of the Brazilian continental shelf that is the object of this Submission is presented in Table 1.

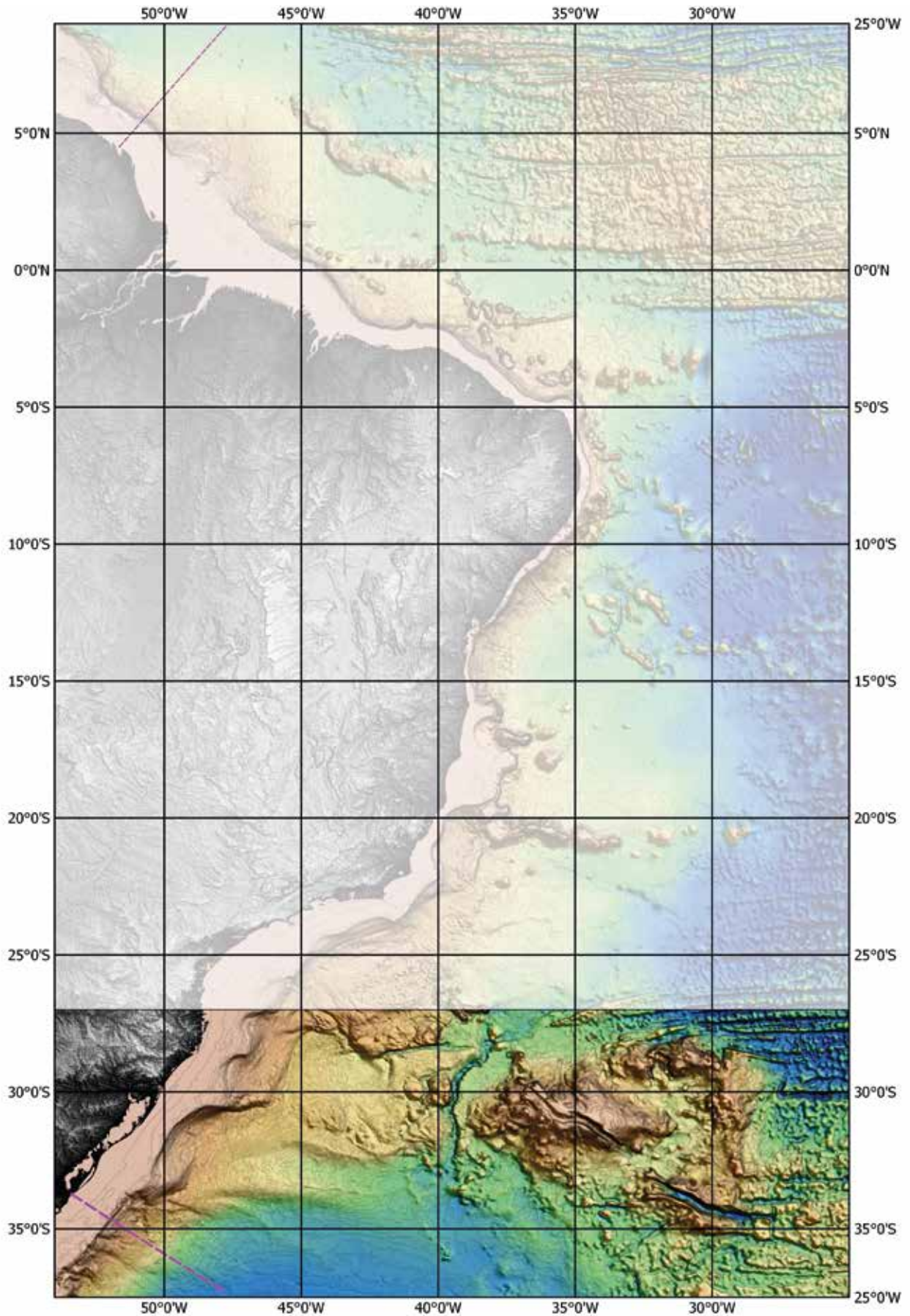


Figure 1 – The highlighted rectangle comprehends the area object of this Partial Revised Submission, delimited between the São Paulo Ridge and the lateral maritime border with the Oriental Republic of Uruguay.



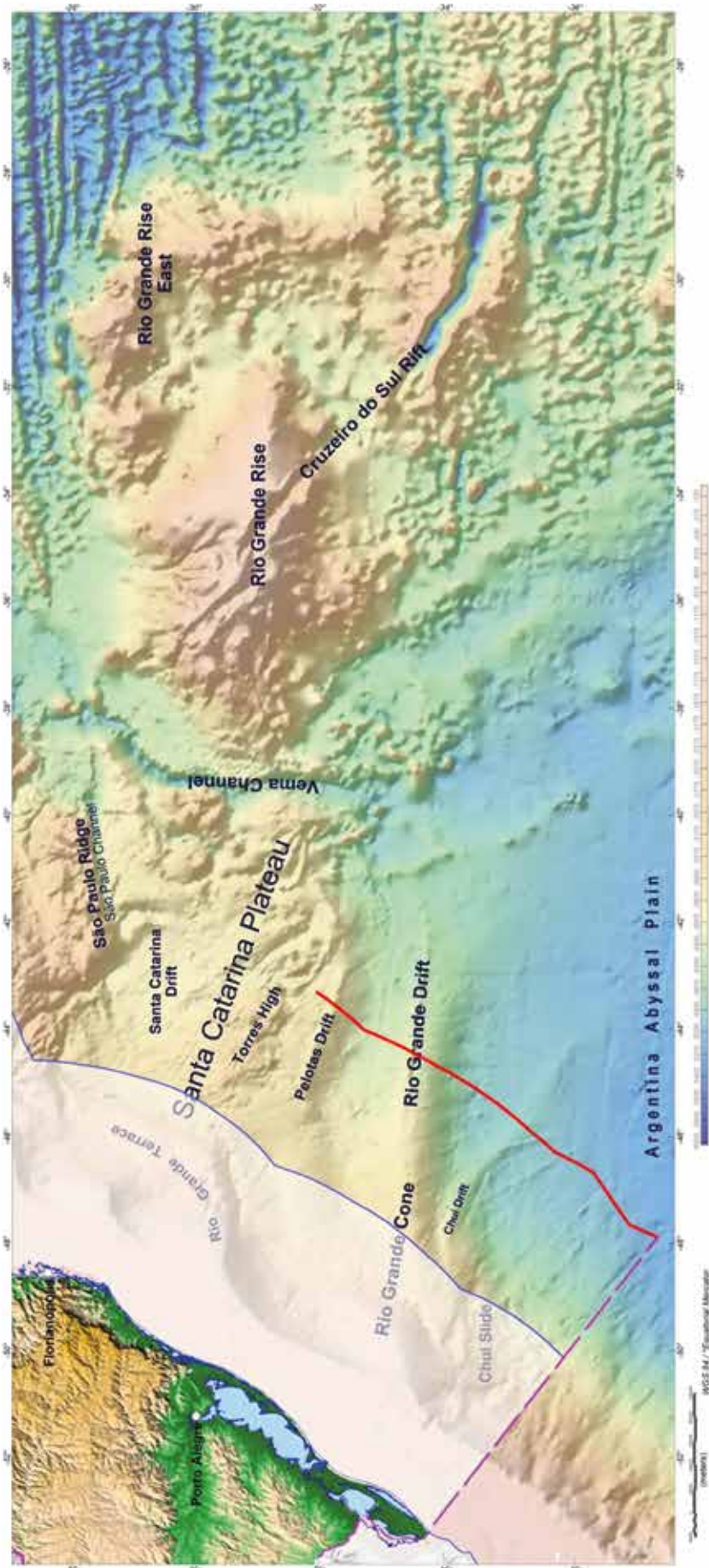


Figure 2 – The outer limit of the extended continental shelf in the Brazilian Southern Region represented by the red line. The blue line represents the Exclusive Economic Zone (EEZ) limit. The magenta line represents the lateral maritime border with the Oriental Republic of Uruguay.

Table 1 – Coordinates (WGS84) of the 313 fixed points that define the outer limit (OL) of the Brazilian extended continental shelf in this Submission.

OL Point	Longitude (GG.MM.SS.DEC)	Latitude (GG.MM.SS.DEC)	Longitude (GG.DEC)	Latitude (GG.DEC)	Distance between the OL points (M)	Art. 76 Criterion	Art.76 (4) Criterion	Line	Point of Foot of the Slope
001-BR-OL-SR	-43.18.42.5744	-31.59.20.5272	-43,3118262188	-31,9890353362	0.000000	350 M	60 M FOS	B59	5-BR-FOS-SR-B59
002-BR-OL-SR	-43.19.22.8495	-32.00.09.8940	-43,3230137475	-32,0027483309	0.999992	350 M	60 M FOS	B59	5-BR-FOS-SR-B59
003-BR-OL-SR	-43.20.03.2963	-32.00.59.1627	-43,3342489767	-32,0164340745	0.999998	350 M	60 M FOS	B59	5-BR-FOS-SR-B59
004-BR-OL-SR	-43.20.43.8275	-32.01.48.3837	-43,3455076520	-32,0301065821	0.999988	350 M	60 M FOS	B59	5-BR-FOS-SR-B59
005-BR-OL-SR	-43.21.24.3578	-32.02.37.6091	-43,3567660578	-32,0437803192	0.999993	350 M	60 M FOS	B59	5-BR-FOS-SR-B59
006-BR-OL-SR	-43.22.04.8916	-32.03.26.8363	-43,3680254518	-32,0574545189	0.999997	350 M	60 M FOS	B59	5-BR-FOS-SR-B59
007-BR-OL-SR	-43.22.45.4219	-32.04.16.0684	-43,3792838576	-32,0711300975	0.999988	350 M	60 M FOS	B59	5-BR-FOS-SR-B59
008-BR-OL-SR	-43.23.25.9835	-32.05.05.2861	-43,3905509770	-32,0848016995	1.000000	350 M	60 M FOS	B59	5-BR-FOS-SR-B59
009-BR-OL-SR	-43.24.06.7085	-32.05.54.4095	-43,4018634614	-32,0984470731	0.999999	350 M	60 M FOS	B59	5-BR-FOS-SR-B59
010-BR-OL-SR	-43.24.47.6090	-32.06.43.4299	-43,4132247243	-32,1120638587	0.999990	350 M	60 M FOS	B59	5-BR-FOS-SR-B59
011-BR-OL-SR	-43.25.28.6858	-32.07.32.3472	-43,4246349453	-32,1256519914	0.999992	350 M	60 M FOS	B59	5-BR-FOS-SR-B59
012-BR-OL-SR	-43.26.09.9285	-32.08.21.1674	-43,4360912500	-32,1392131642	0.999999	350 M	60 M FOS	B59	5-BR-FOS-SR-B59
013-BR-OL-SR	-43.26.51.3219	-32.09.09.8991	-43,4475894161	-32,1527497570	1.000003	350 M	60 M FOS	B59	5-BR-FOS-SR-B59
014-BR-OL-SR	-43.27.32.8938	-32.09.58.5240	-43,4591371693	-32,1662566600	0.999997	350 M	60 M FOS	B59	5-BR-FOS-SR-B59
015-BR-OL-SR	-43.28.14.6358	-32.10.47.0472	-43,4707321738	-32,1797353367	1.000000	350 M	60 M FOS	B59	5-BR-FOS-SR-B59
016-BR-OL-SR	-43.28.56.5547	-32.11.35.4636	-43,4823763162	-32,1931843471	0.999999	350 M	60 M FOS	B59	5-BR-FOS-SR-B59
017-BR-OL-SR	-43.29.38.6476	-32.12.23.7742	-43,4940687879	-32,2066039322	0.999993	350 M	60 M FOS	B59	5-BR-FOS-SR-B59
018-BR-OL-SR	-43.30.20.9148	-32.13.11.9785	-43,5058096789	-32,2199940275	0.999995	350 M	60 M FOS	B59	5-BR-FOS-SR-B59
019-BR-OL-SR	-43.31.03.3560	-32.14.00.0767	-43,5175988992	-32,2333546448	1.000003	350 M	60 M FOS	B59	5-BR-FOS-SR-B59
020-BR-OL-SR	-43.31.45.9699	-32.14.48.0675	-43,5294360895	-32,2466854143	0.999991	350 M	60 M FOS	B59	5-BR-FOS-SR-B59
021-BR-OL-SR	-43.32.28.7568	-32.15.35.9509	-43,5413213397	-32,2599863478	0.999991	350 M	60 M FOS	B59	5-BR-FOS-SR-B59
022-BR-OL-SR	-43.33.11.7171	-32.16.23.7266	-43,5532547396	-32,2732573810	0.999999	350 M	60 M FOS	B59	5-BR-FOS-SR-B59
023-BR-OL-SR	-43.33.54.8497	-32.17.11.3939	-43,5652360197	-32,2864982969	0.999997	350 M	60 M FOS	B59	5-BR-FOS-SR-B59
024-BR-OL-SR	-43.34.38.1537	-32.17.58.9522	-43,5772649105	-32,2997089549	0.999988	350 M	60 M FOS	B59	5-BR-FOS-SR-B59
025-BR-OL-SR	-43.35.21.6301	-32.18.46.4017	-43,5893416815	-32,3128893672	0.999997	350 M	60 M FOS	B59	5-BR-FOS-SR-B59
026-BR-OL-SR	-43.36.05.2782	-32.19.33.7415	-43,6014661531	-32,3260393169	0.999998	350 M	60 M FOS	B59	5-BR-FOS-SR-B59
027-BR-OL-SR	-43.36.49.0970	-32.20.20.9712	-43,6136380557	-32,3391586638	0.999992	350 M	60 M FOS	B59	5-BR-FOS-SR-B59
028-BR-OL-SR	-43.37.33.0866	-32.21.08.0902	-43,6258573893	-32,3522472674	0.999988	350 M	60 M FOS	B59	5-BR-FOS-SR-B59
029-BR-OL-SR	-43.38.17.2473	-32.21.55.0988	-43,6381242439	-32,3653052162	1.000000	350 M	60 M FOS	B59	5-BR-FOS-SR-B59
030-BR-OL-SR	-43.39.01.5781	-32.22.41.9957	-43,6504383498	-32,3783321412	0.999994	350 M	60 M FOS	B59	5-BR-FOS-SR-B59
031-BR-OL-SR	-43.39.46.0786	-32.23.28.7810	-43,6627996172	-32,3913280548	0.999995	350 M	60 M FOS	B59	5-BR-FOS-SR-B59
032-BR-OL-SR	-43.40.30.7480	-32.24.15.4539	-43,6752077768	-32,4042927406	0.999985	350 M	60 M FOS	B59	5-BR-FOS-SR-B59
033-BR-OL-SR	-43.41.15.5881	-32.25.02.0146	-43,6876633673	-32,4172262873	1.000005	350 M	60 M FOS	B59	5-BR-FOS-SR-B59
034-BR-OL-SR	-43.42.00.5964	-32.25.48.4620	-43,7001656703	-32,4301283261	0.999994	350 M	60 M FOS	B59	5-BR-FOS-SR-B59
035-BR-OL-SR	-43.42.45.7732	-32.26.34.7959	-43,7127147755	-32,4429988695	0.999994	350 M	60 M FOS	B59	5-BR-FOS-SR-B59
036-BR-OL-SR	-43.43.31.1201	-32.27.21.0144	-43,7253111321	-32,4558373207	0.999990	350 M	60 M FOS	B59	5-BR-FOS-SR-B59
037-BR-OL-SR	-43.44.16.6335	-32.28.07.1200	-43,7379537519	-32,4686444539	0.999998	350 M	60 M FOS	B59	5-BR-FOS-SR-B59
038-BR-OL-SR	-43.45.02.3115	-32.28.53.1130	-43,7506420960	-32,4814202813	0.999997	350 M	60 M FOS	B59	5-BR-FOS-SR-B59
039-BR-OL-SR	-43.45.48.1594	-32.29.38.9890	-43,7633776016	-32,4941635972	0.999996	350 M	60 M FOS	B59	5-BR-FOS-SR-B59
040-BR-OL-SR	-43.46.34.1744	-32.30.24.7493	-43,7761595501	-32,5068747950	0.999999	350 M	60 M FOS	B59	5-BR-FOS-SR-B59
041-BR-OL-SR	-43.47.20.3556	-32.31.10.3940	-43,7889876720	-32,5195538873	1.000002	350 M	60 M FOS	B59	5-BR-FOS-SR-B59

Table 1 – Coordinates (WGS84) of the 313 fixed points that define the outer limit (OL) of the Brazilian extended continental shelf in this Submission.

OL Point	Longitude (GG.MM.SS.DEC)	Latitude (GG.MM.SS.DEC)	Longitude (GG.DEC)	Latitude (GG.DEC)	Distance between the OL points (M)	Art. 76 Criterion	Art.76 (4) Criterion	Line	Point of Foot of the Slope
042-BR-OL-SR	-43.48.06.7031	-32.31.55.9218	-43,8018619673	-32,5322005061	0.999996	350 M	60 M FOS	B59	5-BR-FOS-SR-B59
043-BR-OL-SR	-43.48.53.2164	-32.32.41.3331	-43,8147823462	-32,5448147402	1.000000	350 M	60 M FOS	B59	5-BR-FOS-SR-B59
044-BR-OL-SR	-43.49.39.8951	-32.33.26.6269	-43,8277486290	-32,5573963742	0.999997	350 M	60 M FOS	B59	5-BR-FOS-SR-B59
045-BR-OL-SR	-43.50.26.7376	-32.34.11.8041	-43,8407604564	-32,5699455727	0.999997	350 M	60 M FOS	B59	5-BR-FOS-SR-B59
046-BR-OL-SR	-43.51.13.7477	-32.34.56.8612	-43,8538188166	-32,5824614359	0.999999	350 M	60 M FOS	B59	5-BR-FOS-SR-B59
047-BR-OL-SR	-43.52.00.9205	-32.35.41.8005	-43,8669223619	-32,5949445851	0.999992	350 M	60 M FOS	B59	5-BR-FOS-SR-B59
048-BR-OL-SR	-43.52.48.2572	-32.36.26.6210	-43,8800714519	-32,6073947288	0.999993	350 M	60 M FOS	B59	5-BR-FOS-SR-B59
049-BR-OL-SR	-43.53.35.7573	-32.37.11.3219	-43,8932659068	-32,6198116517	0.999986	350 M	60 M FOS	B59	5-BR-FOS-SR-B59
050-BR-OL-SR	-43.54.23.4213	-32.37.55.9033	-43,9065059063	-32,6321953669	0.999995	350 M	60 M FOS	B59	5-BR-FOS-SR-B59
051-BR-OL-SR	-43.55.11.2486	-32.38.40.3649	-43,9197912707	-32,6445458110	1.000003	350 M	60 M FOS	B59	5-BR-FOS-SR-B59
052-BR-OL-SR	-43.55.59.2379	-32.39.24.7057	-43,9331216407	-32,6568626931	0.999995	350 M	60 M FOS	B59	5-BR-FOS-SR-B59
053-BR-OL-SR	-43.56.47.3896	-32.40.08.9257	-43,9464971061	-32,6691460260	0.999999	350 M	60 M FOS	B59	5-BR-FOS-SR-B59
054-BR-OL-SR	-43.57.35.7033	-32.40.53.0241	-43,9599175771	-32,6813955947	0.999999	350 M	60 M FOS	B59	5-BR-FOS-SR-B59
055-BR-OL-SR	-43.58.24.1783	-32.41.37.0008	-43,9733828741	-32,6936113364	0.999998	350 M	60 M FOS	B59	5-BR-FOS-SR-B59
056-BR-OL-SR	-43.59.12.8148	-32.42.20.8555	-43,9868929970	-32,7057931880	1.000003	350 M	60 M FOS	B59	5-BR-FOS-SR-B59
057-BR-OL-SR	-44.00.01.6113	-32.43.04.5871	-44,0004475865	-32,7179408587	0.999992	350 M	60 M FOS	B59	5-BR-FOS-SR-B59
058-BR-OL-SR	-44.00.50.5644	-32.43.48.1952	-44,0140456544	-32,7300542099	0.999949	350 M	60 M FOS	B59	5-BR-FOS-SR-B59
059-BR-OL-SR	-44.01.25.0879	-32.44.40.4202	-44,0236355294	-32,7445611789	0.995080	350 M	60 M FOS	B59	5-BR-FOS-SR-B59
060-BR-OL-SR	-44.01.50.7058	-32.45.36.5068	-44,0307516237	-32,7601407882	1.000006	350 M	60 M FOS	B59	5-BR-FOS-SR-B59
061-BR-OL-SR	-44.02.16.5214	-32.46.32.5294	-44,0379226052	-32,7757026200	0.999996	350 M	60 M FOS	B59	5-BR-FOS-SR-B59
062-BR-OL-SR	-44.02.42.5345	-32.47.28.4883	-44,0451484736	-32,7912467574	1.000000	350 M	60 M FOS	B59	5-BR-FOS-SR-B59
063-BR-OL-SR	-44.03.08.7455	-32.48.24.3822	-44,0524293190	-32,8067728284	0.999992	350 M	60 M FOS	B59	5-BR-FOS-SR-B59
064-BR-OL-SR	-44.03.35.1535	-32.49.20.2118	-44,0597648718	-32,8222810680	1.000001	350 M	60 M FOS	B59	5-BR-FOS-SR-B59
065-BR-OL-SR	-44.04.01.7552	-32.50.15.9765	-44,0671542337	-32,8377712559	0.999988	350 M	60 M FOS	B59	5-BR-FOS-SR-B59
066-BR-OL-SR	-44.04.28.5620	-32.51.11.6738	-44,0746005487	-32,8532427173	1.000006	350 M	60 M FOS	B59	5-BR-FOS-SR-B59
067-BR-OL-SR	-44.04.55.5618	-32.52.07.3050	-44,0821004932	-32,8686958390	0.999991	350 M	60 M FOS	B59	5-BR-FOS-SR-B59
068-BR-OL-SR	-44.05.22.7588	-32.53.02.8697	-44,0896552349	-32,8841304770	0.999997	350 M	60 M FOS	B59	5-BR-FOS-SR-B59
069-BR-OL-SR	-44.05.50.1519	-32.53.58.3665	-44,0972644145	-32,8995462600	0.999985	350 M	60 M FOS	B59	5-BR-FOS-SR-B59
070-BR-OL-SR	-44.06.17.7425	-32.54.53.7963	-44,1049284812	-32,9149434232	1.000002	350 M	60 M FOS	B59	5-BR-FOS-SR-B59
071-BR-OL-SR	-44.06.45.5321	-32.55.49.1564	-44,1126477943	-32,9303212168	0.999994	350 M	60 M FOS	B59	5-BR-FOS-SR-B59
072-BR-OL-SR	-44.07.13.5134	-32.56.44.4500	-44,1204203774	-32,9456805579	1.000005	350 M	60 M FOS	B59	5-BR-FOS-SR-B59
073-BR-OL-SR	-44.07.41.6913	-32.57.39.6729	-44,1282475782	-32,9610202424	0.999984	350 M	60 M FOS	B59	5-BR-FOS-SR-B59
074-BR-OL-SR	-44.08.10.0691	-32.58.34.8261	-44,1361302948	-32,9763405816	1.000007	350 M	60 M FOS	B59	5-BR-FOS-SR-B59
075-BR-OL-SR	-44.08.38.6415	-32.59.29.9081	-44,1440670900	-32,9916411292	0.999984	350 M	60 M FOS	B59	5-BR-FOS-SR-B59
076-BR-OL-SR	-44.09.07.4087	-33.00.24.9210	-44,1520579638	-33,0069224992	1.000004	350 M	60 M FOS	B59	5-BR-FOS-SR-B59
077-BR-OL-SR	-44.09.36.3750	-33.01.19.8606	-44,1601041738	-33,0221834888	0.999991	350 M	60 M FOS	B59	5-BR-FOS-SR-B59
078-BR-OL-SR	-44.10.05.5306	-33.02.14.7309	-44,1682029352	-33,0374252416	0.999992	350 M	60 M FOS	B59	5-BR-FOS-SR-B59
079-BR-OL-SR	-44.10.34.5700	-33.03.09.6469	-44,1762694471	-33,0526796902	0.999997	350 M	60 M FOS	B59	5-BR-FOS-SR-B59
080-BR-OL-SR	-44.11.03.7178	-33.04.04.5244	-44,1843660526	-33,0679234541	1.000004	350 M	60 M FOS	B59	5-BR-FOS-SR-B59
081-BR-OL-SR	-44.11.33.0632	-33.04.59.3279	-44,1925175452	-33,0831466300	0.999986	350 M	60 M FOS	B59	5-BR-FOS-SR-B59
082-BR-OL-SR	-44.12.02.6045	-33.05.54.0594	-44,2007234756	-33,0983498316	1.000001	350 M	60 M FOS	B59	5-BR-FOS-SR-B59

Table 1 – Coordinates (WGS84) of the 313 fixed points that define the outer limit (OL) of the Brazilian extended continental shelf in this Submission.

OL Point	Longitude (GG.MM.SS.DEC)	Latitude (GG.MM.SS.DEC)	Longitude (GG.DEC)	Latitude (GG.DEC)	Distance between the OL points (M)	Art. 76 Criterion	Art.76 (4) Criterion	Line	Point of Foot of the Slope
083-BR-OL-SR	-44.12.32.3380	-33.06.48.7185	-44,2089827660	-33,1135329162	0.999993	350 M	60 M FOS	B59	5-BR-FOS-SR-B59
084-BR-OL-SR	-44.13.02.2726	-33.07.43.3022	-44,2172979316	-33,1286950610	1.000002	350 M	60 M FOS	B59	5-BR-FOS-SR-B59
085-BR-OL-SR	-44.13.32.3967	-33.08.37.8130	-44,2256657385	-33,1438369549	0.999988	350 M	60 M FOS	B59	5-BR-FOS-SR-B59
086-BR-OL-SR	-44.14.02.7197	-33.09.32.2485	-44,2340887917	-33,1589579267	1.000001	350 M	60 M FOS	B59	5-BR-FOS-SR-B59
087-BR-OL-SR	-44.14.33.2354	-33.10.26.6090	-44,2425653846	-33,1740580607	0.999991	350 M	60 M FOS	B59	5-BR-FOS-SR-B59
088-BR-OL-SR	-44.15.03.9452	-33.11.20.8942	-44,2510958764	-33,1891372904	0.999993	350 M	60 M FOS	B59	5-BR-FOS-SR-B59
089-BR-OL-SR	-44.15.34.8496	-33.12.15.1040	-44,2596804467	-33,2041955492	1.000003	350 M	60 M FOS	B59	5-BR-FOS-SR-B59
090-BR-OL-SR	-44.16.05.8343	-33.13.09.2820	-44,2682872953	-33,2192450025	0.999983	350 M	60 M FOS	B59	5-BR-FOS-SR-B59
091-BR-OL-SR	-44.16.36.5528	-33.14.03.5702	-44,2768202125	-33,2343250600	1.000001	350 M	60 M FOS	B59	5-BR-FOS-SR-B59
092-BR-OL-SR	-44.17.07.4650	-33.14.57.7827	-44,2854069388	-33,2493840760	1.000001	350 M	60 M FOS	B59	5-BR-FOS-SR-B59
093-BR-OL-SR	-44.17.38.5712	-33.15.51.9183	-44,2940475640	-33,2644217575	0.999994	350 M	60 M FOS	B59	5-BR-FOS-SR-B59
094-BR-OL-SR	-44.18.09.8718	-33.16.45.9767	-44,3027421780	-33,2794379629	0.999991	350 M	60 M FOS	B59	5-BR-FOS-SR-B59
095-BR-OL-SR	-44.18.41.3658	-33.17.39.9580	-44,3114905112	-33,2944327768	0.999994	350 M	60 M FOS	B59	5-BR-FOS-SR-B59
096-BR-OL-SR	-44.19.13.0552	-33.18.33.8610	-44,3202931027	-33,3094058312	0.999998	350 M	60 M FOS	B59	5-BR-FOS-SR-B59
097-BR-OL-SR	-44.19.44.9356	-33.19.27.6870	-44,3291487846	-33,3243575127	1.000004	350 M	60 M FOS	B59	5-BR-FOS-SR-B59
098-BR-OL-SR	-44.20.17.0101	-33.20.21.4327	-44,3380583654	-33,3392868502	0.999985	350 M	60 M FOS	B59	5-BR-FOS-SR-B59
099-BR-OL-SR	-44.20.49.2783	-33.21.15.1000	-44,3470217553	-33,3541944566	1.000005	350 M	60 M FOS	B59	5-BR-FOS-SR-B59
100-BR-OL-SR	-44.21.21.7393	-33.22.08.6871	-44,3560386848	-33,3690797381	0.999995	350 M	60 M FOS	B59	5-BR-FOS-SR-B59
101-BR-OL-SR	-44.21.54.3930	-33.23.02.1937	-44,3651091539	-33,3839427045	0.999994	350 M	60 M FOS	B59	5-BR-FOS-SR-B59
102-BR-OL-SR	-44.22.27.2423	-33.23.55.6179	-44,3742339711	-33,3987827625	0.999988	350 M	60 M FOS	B59	5-BR-FOS-SR-B59
103-BR-OL-SR	-44.23.00.2779	-33.24.48.9646	-44,3834105312	-33,4136012784	1.000003	350 M	60 M FOS	B59	5-BR-FOS-SR-B59
104-BR-OL-SR	-44.23.33.5089	-33.25.42.2278	-44,3926413495	-33,4283966041	0.999997	350 M	60 M FOS	B59	5-BR-FOS-SR-B59
105-BR-OL-SR	-44.24.06.9319	-33.26.35.4083	-44,4019255278	-33,4431689757	0.999991	350 M	60 M FOS	B59	5-BR-FOS-SR-B59
106-BR-OL-SR	-44.24.40.5467	-33.27.28.5068	-44,4112629762	-33,4579185538	0.999999	350 M	60 M FOS	B59	5-BR-FOS-SR-B59
107-BR-OL-SR	-44.25.14.3530	-33.28.21.5216	-44,4206536049	-33,4726448966	0.999990	350 M	60 M FOS	B59	5-BR-FOS-SR-B59
108-BR-OL-SR	-44.25.48.3513	-33.29.14.4537	-44,4300975935	-33,4873482400	1.000006	350 M	60 M FOS	B59	5-BR-FOS-SR-B59
109-BR-OL-SR	-44.26.22.5428	-33.30.07.2991	-44,4395952115	-33,5020275404	0.999982	350 M	60 M FOS	B59	5-BR-FOS-SR-B59
110-BR-OL-SR	-44.26.56.9201	-33.31.00.0638	-44,4491444826	-33,5166843884	1.000003	350 M	60 M FOS	B59	5-BR-FOS-SR-B59
111-BR-OL-SR	-44.27.31.4909	-33.31.52.7412	-44,4587474730	-33,5313169882	0.999987	350 M	60 M FOS	B59	5-BR-FOS-SR-B59
112-BR-OL-SR	-44.28.06.2525	-33.32.45.3340	-44,4684034640	-33,5459261026	1.000001	350 M	60 M FOS	B59	5-BR-FOS-SR-B59
113-BR-OL-SR	-44.28.41.2048	-33.33.37.8406	-44,4781124556	-33,5605112906	1.000001	350 M	60 M FOS	B59	5-BR-FOS-SR-B59
114-BR-OL-SR	-44.29.16.3467	-33.34.30.2604	-44,4878740884	-33,5750723369	0.999990	350 M	60 M FOS	B59	5-BR-FOS-SR-B59
115-BR-OL-SR	-44.29.51.6791	-33.35.22.5936	-44,4976886321	-33,5896093275	0.999997	350 M	60 M FOS	B59	5-BR-FOS-SR-B59
116-BR-OL-SR	-44.30.27.2000	-33.36.14.8391	-44,5075555475	-33,6041219719	0.999985	350 M	60 M FOS	B59	5-BR-FOS-SR-B59
117-BR-OL-SR	-44.31.02.9088	-33.37.06.9957	-44,5174746550	-33,6186099052	0.999957	350 M	60 M FOS	B59	5-BR-FOS-SR-B59
118-BR-OL-SR	-44.31.37.9407	-33.37.59.4815	-44,5272057452	-33,6331893096	1.000049	350 M	60 M FOS	B59	5-BR-FOS-SR-B59
119-BR-OL-SR	-44.32.11.4552	-33.38.52.6592	-44,5365153458	-33,6479608861	1.000057	350 M	60 M FOS	B59	5-BR-FOS-SR-B59
120-BR-OL-SR	-44.32.45.1571	-33.39.45.7519	-44,5458769589	-33,6627088719	0.999990	350 M	60 M FOS	B59	5-BR-FOS-SR-B59
121-BR-OL-SR	-44.33.19.0513	-33.40.38.7620	-44,5552920217	-33,6774338781	0.999998	350 M	60 M FOS	B60A	20-BR-FOS-SR-B60A
122-BR-OL-SR	-44.33.53.1069	-33.41.31.7004	-44,5647519105	-33,6921389936	0.999973	350 M	60 M FOS	B60A	20-BR-FOS-SR-B60A
123-BR-OL-SR	-44.34.26.9319	-33.42.24.7472	-44,5741477493	-33,7068742289	1.000014	350 M	60 M FOS	B60A	20-BR-FOS-SR-B60A



Table 1 – Coordinates (WGS84) of the 313 fixed points that define the outer limit (OL) of the Brazilian extended continental shelf in this Submission.

OL Point	Longitude (GG.MM.SS.DEC)	Latitude (GG.MM.SS.DEC)	Longitude (GG.DEC)	Latitude (GG.DEC)	Distance between the OL points (M)	Art. 76 Criterion	Art.76 (4) Criterion	Line	Point of Foot of the Slope
124-BR-OL-SR	-44.35.00.9425	-33.43.17.7130	-44,5835951515	-33,7215869459	1.000006	350 M	60 M FOS	B60A	20-BR-FOS-SR-B60A
125-BR-OL-SR	-44.35.35.1466	-33.44.10.5926	-44,5930962729	-33,7362757283	0.999982	350 M	60 M FOS	B60A	20-BR-FOS-SR-B60A
126-BR-OL-SR	-44.36.09.5466	-33.45.03.3872	-44,6026518323	-33,7509408868	1.000000	350 M	60 M FOS	B60A	20-BR-FOS-SR-B60A
127-BR-OL-SR	-44.36.43.8150	-33.45.56.2437	-44,6121708302	-33,7656232463	0.999996	350 M	60 M FOS	B60A	20-BR-FOS-SR-B60A
128-BR-OL-SR	-44.37.18.1445	-33.46.49.0754	-44,6217068063	-33,7802987167	1.000001	350 M	60 M FOS	B60A	20-BR-FOS-SR-B60A
129-BR-OL-SR	-44.37.52.6671	-33.47.41.8213	-44,6312964118	-33,7949503496	0.999992	350 M	60 M FOS	B60A	20-BR-FOS-SR-B60A
130-BR-OL-SR	-44.38.27.3814	-33.48.34.4819	-44,6409392873	-33,8095783054	0.999992	350 M	60 M FOS	B60A	20-BR-FOS-SR-B60A
131-BR-OL-SR	-44.39.02.2872	-33.49.27.0571	-44,6506353432	-33,8241825197	0.999995	350 M	60 M FOS	B60A	20-BR-FOS-SR-B60A
132-BR-OL-SR	-44.39.37.3842	-33.50.19.5463	-44,6603844895	-33,8387628530	0.999997	350 M	60 M FOS	B60A	20-BR-FOS-SR-B60A
133-BR-OL-SR	-44.40.12.6722	-33.51.11.9490	-44,6701867262	-33,8533191660	0.999999	350 M	60 M FOS	B60A	20-BR-FOS-SR-B60A
134-BR-OL-SR	-44.40.48.1514	-33.52.04.2637	-44,6800420533	-33,8678510195	0.999987	350 M	60 M FOS	B60A	20-BR-FOS-SR-B60A
135-BR-OL-SR	-44.41.23.8191	-33.52.56.4928	-44,6899497523	-33,8823590987	1.000001	350 M	60 M FOS	B60A	20-BR-FOS-SR-B60A
136-BR-OL-SR	-44.41.59.6783	-33.53.48.6331	-44,6999106315	-33,8968425151	0.999997	350 M	60 M FOS	B60A	20-BR-FOS-SR-B60A
137-BR-OL-SR	-44.42.35.7221	-33.54.40.6822	-44,7099228045	-33,9113006057	0.999920	350 M	60 M FOS	B60A	20-BR-FOS-SR-B60A
138-BR-OL-SR	-44.43.09.5051	-33.55.33.7926	-44,7193069653	-33,9260535127	1.000140	350 M	60 M FOS	B60A	20-BR-FOS-SR-B60A
139-BR-OL-SR	-44.43.42.5307	-33.56.27.2251	-44,7284807406	-33,9408958582	0.999986	350 M	60 M FOS	B60A	20-BR-FOS-SR-B60A
140-BR-OL-SR	-44.44.15.7509	-33.57.20.5770	-44,7377085945	-33,9557158301	1.000001	350 M	60 M FOS	B60A	20-BR-FOS-SR-B60A
141-BR-OL-SR	-44.44.49.1640	-33.58.13.8473	-44,7469899880	-33,9705131389	0.999996	350 M	60 M FOS	B60A	20-BR-FOS-SR-B60A
142-BR-OL-SR	-44.45.22.7723	-33.59.07.0353	-44,7563256398	-33,9852875702	1.000005	350 M	60 M FOS	B60A	20-BR-FOS-SR-B60A
143-BR-OL-SR	-44.45.56.5724	-34.00.00.1398	-44,7657145617	-34,0000388348	0.999984	350 M	60 M FOS	B60A	20-BR-FOS-SR-B60A
144-BR-OL-SR	-44.46.30.5663	-34.00.53.1621	-44,7751572926	-34,0147672423	1.000000	350 M	60 M FOS	B60A	20-BR-FOS-SR-B60A
145-BR-OL-SR	-44.47.04.7548	-34.01.46.0997	-44,7846541021	-34,0294721296	0.999995	350 M	60 M FOS	B60A	20-BR-FOS-SR-B60A
146-BR-OL-SR	-44.47.39.1321	-34.02.38.9553	-44,7942033732	-34,0441542550	1.000001	350 M	60 M FOS	B60A	20-BR-FOS-SR-B60A
147-BR-OL-SR	-44.48.13.7036	-34.03.31.7250	-44,8038065433	-34,0588125072	0.999990	350 M	60 M FOS	B60A	20-BR-FOS-SR-B60A
148-BR-OL-SR	-44.48.48.4677	-34.04.24.4096	-44,8134632529	-34,0734471209	0.999992	350 M	60 M FOS	B60A	20-BR-FOS-SR-B60A
149-BR-OL-SR	-44.49.23.4236	-34.05.17.0089	-44,8231732327	-34,0880580320	0.999992	350 M	60 M FOS	B60A	20-BR-FOS-SR-B60A
150-BR-OL-SR	-44.49.58.5704	-34.06.09.5232	-44,8329362130	-34,1026453257	0.999998	350 M	60 M FOS	B60A	20-BR-FOS-SR-B60A
151-BR-OL-SR	-44.50.33.9118	-34.07.01.9500	-44,8427532719	-34,1172083402	1.000003	350 M	60 M FOS	B60A	20-BR-FOS-SR-B60A
152-BR-OL-SR	-44.51.09.4427	-34.07.54.2898	-44,8526229721	-34,1317471609	0.999987	350 M	60 M FOS	B60A	20-BR-FOS-SR-B60A
153-BR-OL-SR	-44.51.45.1654	-34.08.46.5430	-44,8625459424	-34,1462619479	1.000003	350 M	60 M FOS	B60A	20-BR-FOS-SR-B60A
154-BR-OL-SR	-44.52.21.0786	-34.09.38.7076	-44,8725218235	-34,1607521147	0.999987	350 M	60 M FOS	B60A	20-BR-FOS-SR-B60A
155-BR-OL-SR	-44.52.57.1829	-34.10.30.7847	-44,8825507950	-34,1752179709	1.000000	350 M	60 M FOS	B60A	20-BR-FOS-SR-B60A
156-BR-OL-SR	-44.53.33.4780	-34.11.22.7730	-44,8926327671	-34,1896591539	1.000001	350 M	60 M FOS	B60A	20-BR-FOS-SR-B60A
157-BR-OL-SR	-44.54.09.9632	-34.12.14.6714	-44,9027675601	-34,2040753764	0.999990	350 M	60 M FOS	B60A	20-BR-FOS-SR-B60A
158-BR-OL-SR	-44.54.46.6386	-34.13.06.4805	-44,9129551741	-34,2184667986	0.999996	350 M	60 M FOS	B60A	20-BR-FOS-SR-B60A
159-BR-OL-SR	-44.55.23.5039	-34.13.58.1993	-44,9231955192	-34,2328331332	0.999993	350 M	60 M FOS	B60A	20-BR-FOS-SR-B60A
160-BR-OL-SR	-44.56.00.5589	-34.14.49.8278	-44,9334885954	-34,2471743914	0.999999	350 M	60 M FOS	B60A	20-BR-FOS-SR-B60A
161-BR-OL-SR	-44.56.37.8032	-34.15.41.3650	-44,9438342230	-34,2614902860	0.999994	350 M	60 M FOS	B60A	20-BR-FOS-SR-B60A
162-BR-OL-SR	-44.57.15.2373	-34.16.32.8107	-44,9542325817	-34,2757807539	0.999999	350 M	60 M FOS	B60A	20-BR-FOS-SR-B60A
163-BR-OL-SR	-44.57.52.8599	-34.17.24.1646	-44,9646833122	-34,2900457317	0.999999	350 M	60 M FOS	B60A	20-BR-FOS-SR-B60A

Table 1 – Coordinates (WGS84) of the 313 fixed points that define the outer limit (OL) of the Brazilian extended continental shelf in this Submission.

OL Point	Longitude (GG.MM.SS.DEC)	Latitude (GG.MM.SS.DEC)	Longitude (GG.DEC)	Latitude (GG.DEC)	Distance between the OL points (M)	Art. 76 Criterion	Art.76 (4) Criterion	Line	Point of Foot of the Slope
164-BR-OL-SR	-44.58.30.6711	-34.18.15.4255	-44,9751864145	-34,3042848581	0.999989	350 M	60 M FOS	B60A	20-BR-FOS-SR-B60A
165-BR-OL-SR	-44.59.08.6711	-34.19.06.5939	-44,9857419785	-34,3184982939	0.999998	350 M	60 M FOS	B60A	20-BR-FOS-SR-B60A
166-BR-OL-SR	-44.59.46.8590	-34.19.57.6684	-44,9963497345	-34,3326856777	0.999990	350 M	60 M FOS	B60A	20-BR-FOS-SR-B60A
167-BR-OL-SR	-45.00.25.2355	-34.20.48.6495	-45,0070098623	-34,3468470957	0.999999	350 M	60 M FOS	B60A	20-BR-FOS-SR-B60A
168-BR-OL-SR	-45.01.03.7992	-34.21.39.5361	-45,0177220026	-34,3609822617	0.999993	350 M	60 M FOS	B60A	20-BR-FOS-SR-B60A
169-BR-OL-SR	-45.01.42.5531	-34.22.30.3267	-45,0284869638	-34,3750907403	0.999994	350 M	60 M FOS	B60A	20-BR-FOS-SR-B60A
170-BR-OL-SR	-45.02.21.4896	-34.23.21.0249	-45,0393026798	-34,3891735861	1.000002	350 M	60 M FOS	B60A	20-BR-FOS-SR-B60A
171-BR-OL-SR	-45.03.00.6157	-34.24.11.6258	-45,0501710371	-34,4032293958	0.999998	350 M	60 M FOS	B60A	20-BR-FOS-SR-B60A
172-BR-OL-SR	-45.03.39.9281	-34.25.02.1305	-45,0610911374	-34,4172584792	0.999994	350 M	60 M FOS	B60A	20-BR-FOS-SR-B60A
173-BR-OL-SR	-45.04.19.4274	-34.25.52.5388	-45,0720631602	-34,4312607740	0.999999	350 M	60 M FOS	B60A	20-BR-FOS-SR-B60A
174-BR-OL-SR	-45.04.59.1120	-34.26.42.8493	-45,0830866566	-34,4452359198	0.999983	350 M	60 M FOS	B60A	20-BR-FOS-SR-B60A
175-BR-OL-SR	-45.05.38.9838	-34.27.33.0632	-45,0941621654	-34,4591842265	1.000006	350 M	60 M FOS	B60A	20-BR-FOS-SR-B60A
176-BR-OL-SR	-45.06.19.0400	-34.28.23.1784	-45,1052888782	-34,4731051108	0.999985	350 M	60 M FOS	B60A	20-BR-FOS-SR-B60A
177-BR-OL-SR	-45.06.59.2827	-34.29.13.1954	-45,1164674237	-34,4869987337	0.999998	350 M	60 M FOS	B60A	20-BR-FOS-SR-B60A
178-BR-OL-SR	-45.07.39.6720	-34.30.03.1339	-45,1276866630	-34,5008705365	0.999983	350 M	60 M FOS	B60A	20-BR-FOS-SR-B60A
179-BR-OL-SR	-45.08.19.9280	-34.30.53.1516	-45,1388688916	-34,5147643254	1.000009	350 M	60 M FOS	B60A	20-BR-FOS-SR-B60A
180-BR-OL-SR	-45.09.00.3687	-34.31.43.0701	-45,1501024141	-34,5286305737	1.000001	350 M	60 M FOS	B60A	20-BR-FOS-SR-B60A
181-BR-OL-SR	-45.09.40.9940	-34.32.32.8889	-45,1613872303	-34,5424691449	0.999995	350 M	60 M FOS	B60A	20-BR-FOS-SR-B60A
182-BR-OL-SR	-45.10.21.8050	-34.33.22.6071	-45,1727236099	-34,5562797540	0.999990	350 M	60 M FOS	B60A	20-BR-FOS-SR-B60A
183-BR-OL-SR	-45.11.02.7990	-34.34.12.2271	-45,1841108341	-34,5700630824	1.000008	350 M	60 M FOS	B60A	20-BR-FOS-SR-B60A
184-BR-OL-SR	-45.11.43.9773	-34.35.01.7449	-45,1955492623	-34,5838180277	0.999989	350 M	60 M FOS	B60A	20-BR-FOS-SR-B60A
185-BR-OL-SR	-45.12.25.3397	-34.35.51.1616	-45,2070388046	-34,5975448998	0.999991	350 M	60 M FOS	B60A	20-BR-FOS-SR-B60A
186-BR-OL-SR	-45.13.06.8864	-34.36.40.4771	-45,2185795509	-34,6112436367	1.000002	350 M	60 M FOS	B60A	20-BR-FOS-SR-B60A
187-BR-OL-SR	-45.13.48.6155	-34.37.29.6900	-45,2301709622	-34,6249138798	0.999988	350 M	60 M FOS	B60A	20-BR-FOS-SR-B60A
188-BR-OL-SR	-45.14.30.5279	-34.38.18.8008	-45,2418133079	-34,6385557901	0.999997	350 M	60 M FOS	B60A	20-BR-FOS-SR-B60A
189-BR-OL-SR	-45.15.12.6231	-34.39.07.8084	-45,2535064085	-34,6521690092	0.999993	350 M	60 M FOS	B60A	20-BR-FOS-SR-B60A
190-BR-OL-SR	-45.15.54.9003	-34.39.56.7122	-45,2652500842	-34,6657534013	0.999985	350 M	60 M FOS	B60A	20-BR-FOS-SR-B60A
191-BR-OL-SR	-45.16.37.3606	-34.40.45.5129	-45,2770446045	-34,6793091276	1.000001	350 M	60 M FOS	B60A	20-BR-FOS-SR-B60A
192-BR-OL-SR	-45.17.20.0023	-34.41.34.2090	-45,2888895204	-34,6928358299	0.999995	350 M	60 M FOS	B60A	20-BR-FOS-SR-B60A
193-BR-OL-SR	-45.18.02.8251	-34.42.22.8001	-45,3007847419	-34,7063333726	0.999989	350 M	60 M FOS	B60A	20-BR-FOS-SR-B60A
194-BR-OL-SR	-45.18.45.8303	-34.43.11.2864	-45,3127306283	-34,7198017687	1.000002	350 M	60 M FOS	B60A	20-BR-FOS-SR-B60A
195-BR-OL-SR	-45.19.29.0156	-34.43.59.6666	-45,3247265510	-34,7332407344	0.999991	350 M	60 M FOS	B60A	20-BR-FOS-SR-B60A
196-BR-OL-SR	-45.20.12.3814	-34.44.47.9410	-45,3367725996	-34,7466502827	0.999992	350 M	60 M FOS	B60A	20-BR-FOS-SR-B60A
197-BR-OL-SR	-45.20.55.9286	-34.45.36.1090	-45,3488690437	-34,7600302784	1.000002	350 M	60 M FOS	B60A	20-BR-FOS-SR-B60A
198-BR-OL-SR	-45.21.39.6549	-34.46.24.1696	-45,3610152545	-34,7733804380	0.999989	350 M	60 M FOS	B60A	20-BR-FOS-SR-B60A
199-BR-OL-SR	-45.22.23.5598	-34.47.12.1228	-45,3732110523	-34,7867007747	0.999980	350 M	60 M FOS	B60A	20-BR-FOS-SR-B60A
200-BR-OL-SR	-45.23.06.9414	-34.48.00.4064	-45,3852615027	-34,8001129001	1.000022	350 M	60 M FOS	B60A	20-BR-FOS-SR-B60A
201-BR-OL-SR	-45.23.50.4026	-34.48.48.6432	-45,3973340516	-34,8135120072	0.999991	350 M	60 M FOS	B60A	20-BR-FOS-SR-B60A
202-BR-OL-SR	-45.24.34.0429	-34.49.36.7740	-45,4094563672	-34,8268816562	0.999989	350 M	60 M FOS	B60A	20-BR-FOS-SR-B60A
203-BR-OL-SR	-45.25.17.8663	-34.50.24.7968	-45,4216295275	-34,8402213414	1.000003	350 M	60 M FOS	B60A	20-BR-FOS-SR-B60A

Table 1 – Coordinates (WGS84) of the 313 fixed points that define the outer limit (OL) of the Brazilian extended continental shelf in this Submission.

OL Point	Longitude (GG.MM.SS.DEC)	Latitude (GG.MM.SS.DEC)	Longitude (GG.DEC)	Latitude (GG.DEC)	Distance between the OL points (M)	Art. 76 Criterion	Art.76 (4) Criterion	Line	Point of Foot of the Slope
204-BR-OL-SR	-45.26.01.8679	-34.51.12.7121	-45,4338521849	-34,8535311504	0.999991	350 M	60 M FOS	B60A	20-BR-FOS-SR-B60A
205-BR-OL-SR	-45.26.45.8772	-34.52.00.6268	-45,4460769983	-34,8668407861	0.999989	350 M	60 M FOS	B60A	20-BR-FOS-SR-B60A
206-BR-OL-SR	-45.27.29.4813	-34.52.48.7981	-45,4581892527	-34,8802216838	1.000006	350 M	60 M FOS	B60A	20-BR-FOS-SR-B60A
207-BR-OL-SR	-45.28.13.2652	-34.53.36.8617	-45,4703514535	-34,8935727021	0.999994	350 M	60 M FOS	B60A	20-BR-FOS-SR-B60A
208-BR-OL-SR	-45.28.57.2293	-34.54.24.8176	-45,4825636905	-34,9068937802	0.999989	350 M	60 M FOS	B60A	20-BR-FOS-SR-B60A
209-BR-OL-SR	-45.29.41.3728	-34.55.12.6671	-45,4948257840	-34,9201853012	1.000006	350 M	60 M FOS	B60A	20-BR-FOS-SR-B60A
210-BR-OL-SR	-45.30.25.6958	-34.56.00.4070	-45,5071377339	-34,9334463906	0.999990	350 M	60 M FOS	B60A	20-BR-FOS-SR-B60A
211-BR-OL-SR	-45.31.10.1977	-34.56.48.0385	-45,5194993607	-34,9466773577	0.999992	350 M	60 M FOS	B60A	20-BR-FOS-SR-B60A
212-BR-OL-SR	-45.31.54.8790	-34.57.35.5610	-45,5319108440	-34,9598780678	1.000000	350 M	60 M FOS	B60A	20-BR-FOS-SR-B60A
213-BR-OL-SR	-45.32.39.7386	-34.58.22.9737	-45,5443718245	-34,9730482386	0.999994	350 M	60 M FOS	B60A	20-BR-FOS-SR-B60A
214-BR-OL-SR	-45.33.24.7760	-34.59.10.2761	-45,5568822123	-34,9861878095	0.999990	350 M	60 M FOS	B60A	20-BR-FOS-SR-B60A
215-BR-OL-SR	-45.34.09.9919	-34.59.57.4682	-45,5694421871	-34,9992967202	0.999997	350 M	60 M FOS	B60A	20-BR-FOS-SR-B60A
216-BR-OL-SR	-45.34.55.3853	-35.00.44.5494	-45,5820514794	-35,0123748363	0.999998	350 M	60 M FOS	B60A	20-BR-FOS-SR-B60A
217-BR-OL-SR	-45.35.40.9554	-35.01.31.5190	-45,5947098197	-35,0254219497	0.999990	350 M	60 M FOS	B60A	20-BR-FOS-SR-B60A
218-BR-OL-SR	-45.36.26.7036	-35.02.18.3757	-45,6074176572	-35,0384377046	0.999987	350 M	60 M FOS	B60A	20-BR-FOS-SR-B60A
219-BR-OL-SR	-45.37.12.6264	-35.03.05.1228	-45,6201740038	-35,0514230011	1.000004	350 M	60 M FOS	B60A	20-BR-FOS-SR-B60A
220-BR-OL-SR	-45.37.58.7262	-35.03.51.7557	-45,6329794881	-35,0643765971	0.999992	350 M	60 M FOS	B60A	20-BR-FOS-SR-B60A
221-BR-OL-SR	-45.38.45.0015	-35.04.38.2752	-45,6458337510	-35,0772986541	0.999984	350 M	60 M FOS	B60A	20-BR-FOS-SR-B60A
222-BR-OL-SR	-45.39.31.4531	-35.05.24.6819	-45,6587369721	-35,0901894075	1.000001	350 M	60 M FOS	B60A	20-BR-FOS-SR-B60A
223-BR-OL-SR	-45.40.18.0800	-35.06.10.9743	-45,6716888819	-35,1030484278	0.999998	350 M	60 M FOS	B60A	20-BR-FOS-SR-B60A
224-BR-OL-SR	-45.41.04.8808	-35.06.57.1524	-45,6846891210	-35,1158756552	0.999990	350 M	1% ST	500-0054	28-BR-FOS-SR-B52_1
225-BR-OL-SR	-45.41.51.8567	-35.07.43.2152	-45,6977379590	-35,1286708822	0.999990	350 M	1% ST	500-0054	28-BR-FOS-SR-B52_1
226-BR-OL-SR	-45.42.39.0071	-35.08.29.1634	-45,7108353060	-35,1414342702	1.000002	350 M	1% ST	500-0054	28-BR-FOS-SR-B52_1
227-BR-OL-SR	-45.43.26.3312	-35.09.14.9959	-45,7239808925	-35,1541655379	1.000002	350 M	1% ST	500-0054	28-BR-FOS-SR-B52_1
228-BR-OL-SR	-45.44.13.8306	-35.10.00.7105	-45,7371751678	-35,1668640355	0.999994	350 M	1% ST	500-0054	28-BR-FOS-SR-B52_1
229-BR-OL-SR	-45.45.01.4995	-35.10.46.3120	-45,7504165147	-35,1795311047	1.000005	350 M	1% ST	500-0054	28-BR-FOS-SR-B52_1
230-BR-OL-SR	-45.45.49.3426	-35.11.31.7945	-45,7637062809	-35,1921651367	0.999994	350 M	1% ST	500-0054	28-BR-FOS-SR-B52_1
231-BR-OL-SR	-45.46.37.3575	-35.12.17.1595	-45,7770437476	-35,2047665146	0.999986	350 M	1% ST	500-0054	28-BR-FOS-SR-B52_1
232-BR-OL-SR	-45.47.25.5467	-35.13.02.4053	-45,7904296334	-35,2173348101	0.999991	350 M	1% ST	500-0054	28-BR-FOS-SR-B52_1
233-BR-OL-SR	-45.48.13.9040	-35.13.47.5361	-45,8038622317	-35,2298711431	0.999999	350 M	1% ST	500-0054	28-BR-FOS-SR-B52_1
234-BR-OL-SR	-45.49.02.4347	-35.14.32.5469	-45,8173429797	-35,2423741271	1.000000	350 M	1% ST	500-0054	28-BR-FOS-SR-B52_1
235-BR-OL-SR	-45.49.51.1362	-35.15.17.4381	-45,8308711587	-35,2548439239	0.999994	350 M	1% ST	500-0054	28-BR-FOS-SR-B52_1
236-BR-OL-SR	-45.50.40.0077	-35.16.02.2100	-45,8444465891	-35,2672805476	0.999991	350 M	1% ST	500-0054	28-BR-FOS-SR-B52_1
237-BR-OL-SR	-45.51.29.0500	-35.16.46.8622	-45,8580694506	-35,2796839390	1.000000	350 M	1% ST	500-0054	28-BR-FOS-SR-B52_1
238-BR-OL-SR	-45.52.18.2618	-35.17.31.3940	-45,8717393837	-35,2920538912	0.999996	350 M	1% ST	500-0054	28-BR-FOS-SR-B52_1
239-BR-OL-SR	-45.53.07.6430	-35.18.15.8047	-45,8854563886	-35,3043901975	0.999992	350 M	1% ST	500-0054	28-BR-FOS-SR-B52_1
240-BR-OL-SR	-45.53.57.0003	-35.19.00.2523	-45,8991667460	-35,3167367552	1.000158	350 M	1% ST	500-0054	28-BR-FOS-SR-B52_1
241-BR-OL-SR	-45.54.42.7268	-35.19.47.2394	-45,9118685648	-35,3297887232	1.000132	350 M	1% ST	500-0054	28-BR-FOS-SR-B52_1
242-BR-OL-SR	-45.55.28.5210	-35.20.34.1767	-45,9245891584	-35,3428268620	0.999999	350 M	1% ST	500-0054	28-BR-FOS-SR-B52_1
243-BR-OL-SR	-45.56.14.4920	-35.21.21.0014	-45,9373588898	-35,3558337357	0.999985	350 M	1% ST	500-0054	28-BR-FOS-SR-B52_1
244-BR-OL-SR	-45.57.00.6409	-35.22.07.7140	-45,9501780286	-35,3688094317	0.999992	350 M	1% ST	500-0054	28-BR-FOS-SR-B52_1

Table 1 – Coordinates (WGS84) of the 313 fixed points that define the outer limit (OL) of the Brazilian extended continental shelf in this Submission.

OL Point	Longitude (GG,MM,SS,DEC)	Latitude (GG,MM,SS,DEC)	Longitude (GG,DEC)	Latitude (GG,DEC)	Distance between the OL points (M)	Art. 76 Criterion	Art.76 (4) Criterion	Line	Point of Foot of the Slope
245-BR-OL-SR	-45.57.46.9670	-35.22.54.3140	-45,9630463950	-35,3817538902	0.999999	350 M	1% ST	500-0054	28-BR-FOS-SR-B52_1
246-BR-OL-SR	-45.58.33.4697	-35.23.40.8006	-45,9759638095	-35,3946668308	0.999996	350 M	1% ST	500-0054	28-BR-FOS-SR-B52_1
247-BR-OL-SR	-45.59.20.1477	-35.24.27.1732	-45,9889299126	-35,4075481204	0.999985	350 M	1% ST	500-0054	28-BR-FOS-SR-B52_1
248-BR-OL-SR	-46.00.07.0029	-35.25.13.4322	-46,0019452434	-35,4203978464	1.000003	350 M	1% ST	500-0054	28-BR-FOS-SR-B52_1
249-BR-OL-SR	-46.00.54.0304	-35.25.59.5785	-46,0150084545	-35,4332162435	0.999997	350 M	1% ST	500-0054	28-BR-FOS-SR-B52_1
250-BR-OL-SR	-46.01.41.2391	-35.26.45.6059	-46,0281219712	-35,4460016346	1.000000	350 M	1% ST	500-0054	28-BR-FOS-SR-B52_1
251-BR-OL-SR	-46.02.28.6201	-35.27.31.5198	-46,0412833680	-35,4587555043	1.000003	350 M	1% ST	500-0054	28-BR-FOS-SR-B52_1
252-BR-OL-SR	-46.03.16.1748	-35.28.17.3177	-46,0544930045	-35,4714771316	0.999992	350 M	1% ST	500-0054	28-BR-FOS-SR-B52_1
253-BR-OL-SR	-46.04.03.9041	-35.29.02.9990	-46,0677511499	-35,4841663836	0.999993	350 M	1% ST	500-0054	28-BR-FOS-SR-B52_1
254-BR-OL-SR	-46.04.51.8068	-35.29.48.5638	-46,0810574451	-35,4968232746	0.999991	350 M	1% ST	500-0054	28-BR-FOS-SR-B52_1
255-BR-OL-SR	-46.05.39.8841	-35.30.34.0119	-46,0944122492	-35,5094477453	1.000007	350 M	1% ST	500-0054	28-BR-FOS-SR-B52_1
256-BR-OL-SR	-46.06.28.1338	-35.31.19.3420	-46,1078149336	-35,5220394426	0.999995	350 M	1% ST	500-0054	28-BR-FOS-SR-B52_1
257-BR-OL-SR	-46.07.16.5558	-35.32.04.5539	-46,1212654982	-35,5345983075	0.999989	350 M	1% ST	500-0054	28-BR-FOS-SR-B52_1
258-BR-OL-SR	-46.08.05.1470	-35.32.49.6495	-46,1347630447	-35,5471248682	0.999986	350 M	1% ST	500-0054	28-BR-FOS-SR-B52_1
259-BR-OL-SR	-46.08.53.9170	-35.33.34.6226	-46,1483102680	-35,5596173770	1.000001	350 M	1% ST	500-0054	28-BR-FOS-SR-B52_1
260-BR-OL-SR	-46.09.42.8558	-35.34.19.4783	-46,1619043833	-35,5720773166	1.000000	350 M	1% ST	500-0054	28-BR-FOS-SR-B52_1
261-BR-OL-SR	-46.10.31.9657	-35.35.04.2145	-46,1755460196	-35,5845040408	0.999999	350 M	1% ST	500-0054	28-BR-FOS-SR-B52_1
262-BR-OL-SR	-46.11.21.2466	-35.35.48.8307	-46,1892351767	-35,5968974171	1.000001	350 M	1% ST	500-0054	28-BR-FOS-SR-B52_1
263-BR-OL-SR	-46.12.10.6980	-35.36.33.3261	-46,2029716750	-35,6092572401	0.999997	350 M	1% ST	500-0054	28-BR-FOS-SR-B52_1
264-BR-OL-SR	-46.13.00.3192	-35.37.17.7004	-46,2167553349	-35,6215834507	0.999993	350 M	1% ST	500-0054	28-BR-FOS-SR-B52_1
265-BR-OL-SR	-46.13.50.1098	-35.38.01.9533	-46,2305860665	-35,6338759169	0.999988	350 M	1% ST	500-0054	28-BR-FOS-SR-B52_1
266-BR-OL-SR	-46.14.40.0696	-35.38.46.0845	-46,2444637800	-35,6461345798	0.999987	350 M	1% ST	500-0054	28-BR-FOS-SR-B52_1
267-BR-OL-SR	-46.15.30.1982	-35.39.30.0946	-46,2583883856	-35,6583596007	0.999998	350 M	1% ST	500-0054	28-BR-FOS-SR-B52_1
268-BR-OL-SR	-46.16.20.4975	-35.40.13.9807	-46,2723604222	-35,6705501877	1.000001	350 M	1% ST	500-0054	28-BR-FOS-SR-B52_1
269-BR-OL-SR	-46.17.10.9644	-35.40.57.7445	-46,2863789915	-35,6827067953	1.000003	350 M	1% ST	500-0054	28-BR-FOS-SR-B52_1
270-BR-OL-SR	-46.18.01.5473	-35.41.41.3424	-46,3004298104	-35,6948173468	0.999008	350 M	1% ST	500-0054	28-BR-FOS-SR-B52_1
271-BR-OL-SR	-46.18.33.2936	-35.42.36.0851	-46,3092482122	-35,7100236290	1.007788	350 M	1% ST	500-0054	28-BR-FOS-SR-B52_1
272-BR-OL-SR	-46.19.04.0897	-35.43.30.6742	-46,3178026890	-35,7251872826	0.999989	350 M	1% ST	500-0054	28-BR-FOS-SR-B52_1
273-BR-OL-SR	-46.19.35.0876	-35.44.25.1904	-46,3264132206	-35,7403306675	1.000004	350 M	1% ST	500-0054	28-BR-FOS-SR-B52_1
274-BR-OL-SR	-46.20.06.2873	-35.45.19.6310	-46,3350798072	-35,7554530611	0.999987	350 M	1% ST	500-0054	28-BR-FOS-SR-B52_1
275-BR-OL-SR	-46.20.37.6895	-35.46.13.9974	-46,3438026282	-35,7705548392	1.000003	350 M	1% ST	500-0054	28-BR-FOS-SR-B52_1
276-BR-OL-SR	-46.21.09.2918	-35.47.08.2883	-46,3525810550	-35,7856356455	0.999995	350 M	1% ST	500-0054	28-BR-FOS-SR-B52_1
277-BR-OL-SR	-46.21.41.0985	-35.48.02.5027	-46,3614162553	-35,8006951972	1.000004	350 M	1% ST	500-0054	28-BR-FOS-SR-B52_1
278-BR-OL-SR	-46.22.13.1064	-35.48.56.6393	-46,3703073309	-35,8157331386	0.999983	350 M	1% ST	500-0054	28-BR-FOS-SR-B52_1
279-BR-OL-SR	-46.22.45.3125	-35.49.50.7010	-46,3792534731	-35,8307502846	0.999997	350 M	1% ST	500-0054	28-BR-FOS-SR-B52_1
280-BR-OL-SR	-46.23.17.7214	-35.50.44.6848	-46,3882559397	-35,8457457672	0.999999	350 M	1% ST	500-0054	28-BR-FOS-SR-B52_1
281-BR-OL-SR	-46.23.50.3314	-35.51.38.5905	-46,3973142816	-35,8607195968	1.000001	350 M	1% ST	500-0054	28-BR-FOS-SR-B52_1
282-BR-OL-SR	-46.24.23.1416	-35.52.32.4174	-46,4064282291	-35,8756714912	0.999989	350 M	1% ST	500-0054	28-BR-FOS-SR-B52_1
283-BR-OL-SR	-46.24.56.1523	-35.53.26.1655	-46,4155978722	-35,8906015339	0.999993	350 M	1% ST	500-0054	28-BR-FOS-SR-B52_1
284-BR-OL-SR	-46.25.29.3639	-35.54.19.8343	-46,4248233007	-35,9055095160	0.999995	350 M	1% ST	500-0054	28-BR-FOS-SR-B52_1
285-BR-OL-SR	-46.26.02.7753	-35.55.13.4233	-46,4341042450	-35,9203953749	0.999996	350 M	1% ST	500-0054	28-BR-FOS-SR-B52_1



Table 1 – Coordinates (WGS84) of the 313 fixed points that define the outer limit (OL) of the Brazilian extended continental shelf in this Submission.

OL Point	Longitude (GG,MM,SS,DEC)	Latitude (GG,MM,SS,DEC)	Longitude (GG,DEC)	Latitude (GG,DEC)	Distance between the OL points (M)	Art. 76 Criterion	Art.76 (4) Criterion	Line	Point of Foot of the Slope
286-BR-OL-SR	-46.26.36.3894	-35.56.06.9302	-46,4434415138	-35,9352583907	0.999985	350 M	1% ST	500-0054	28-BR-FOS-SR-B52_1
287-BR-OL-SR	-46.27.10.1989	-35.57.00.3588	-46,4528330407	-35,9500996698	0.999996	350 M	1% ST	500-0054	28-BR-FOS-SR-B52_1
288-BR-OL-SR	-46.27.44.2089	-35.57.53.7060	-46,4622802633	-35,9649183463	1.000000	350 M	1% ST	500-0054	28-BR-FOS-SR-B52_1
289-BR-OL-SR	-46.28.18.4188	-35.58.46.9709	-46,4717830017	-35,9797141388	0.999994	350 M	1% ST	500-0054	28-BR-FOS-SR-B52_1
290-BR-OL-SR	-46.28.52.8285	-35.59.40.1531	-46,4813412559	-35,9944869854	0.999993	350 M	1% ST	500-0054	28-BR-FOS-SR-B52_1
291-BR-OL-SR	-46.29.27.4371	-36.00.33.2528	-46,4909547566	-36,0092368968	0.999994	350 M	1% ST	500-0054	28-BR-FOS-SR-B52_1
292-BR-OL-SR	-46.30.02.2453	-36.01.26.2689	-46,5006236833	-36,0239635923	0.999993	350 M	1% ST	500-0054	28-BR-FOS-SR-B52_1
293-BR-OL-SR	-46.30.37.2510	-36.02.19.2025	-46,5103474971	-36,0386673748	1.000004	350 M	1% ST	500-0054	28-BR-FOS-SR-B52_1
294-BR-OL-SR	-46.31.12.4553	-36.03.12.0511	-46,5201264675	-36,0533475257	0.999991	350 M	1% ST	500-0054	28-BR-FOS-SR-B52_1
295-BR-OL-SR	-46.31.47.8581	-36.04.04.8151	-46,5299605944	-36,0680042022	0.999995	350 M	1% ST	500-0054	28-BR-FOS-SR-B52_1
296-BR-OL-SR	-46.32.23.4618	-36.04.57.4923	-46,5398505067	-36,0826367593	0.999988	350 M	1% ST	500-0054	28-BR-FOS-SR-B52_1
297-BR-OL-SR	-46.32.59.2579	-36.05.50.0872	-46,5497938687	-36,0972464481	1.000001	350 M	1% ST	500-0054	28-BR-FOS-SR-B52_1
298-BR-OL-SR	-46.33.35.1750	-36.06.42.6302	-46,5597708278	-36,1118417347	0.999995	350 M	1% ST	500-0054	28-BR-FOS-SR-B52_1
299-BR-OL-SR	-46.34.11.0138	-36.07.35.2107	-46,5697260476	-36,1264474037	0.999986	350 M	1% ST	500-0054	28-BR-FOS-SR-B52_1
300-BR-OL-SR	-46.34.46.7132	-36.08.27.8575	-46,5796425500	-36,1410715351	1.000004	350 M	1% ST	500-0054	28-BR-FOS-SR-B52_1
301-BR-OL-SR	-46.35.22.6099	-36.09.20.4187	-46,5896138497	-36,1556718635	1.000001	350 M	1% ST	500-0054	28-BR-FOS-SR-B52_1
302-BR-OL-SR	-46.35.58.7038	-36.10.12.8929	-46,5996399466	-36,1702480362	0.999988	350 M	1% ST	500-0054	28-BR-FOS-SR-B52_1
303-BR-OL-SR	-46.36.34.9960	-36.11.05.2813	-46,6097211102	-36,1848003559	1.000005	350 M	1% ST	500-0054	28-BR-FOS-SR-B52_1
304-BR-OL-SR	-46.37.11.4848	-36.11.57.5820	-46,6198568913	-36,1993283245	0.999994	350 M	1% ST	500-0054	28-BR-FOS-SR-B52_1
305-BR-OL-SR	-46.37.48.1712	-36.12.49.7950	-46,6300475596	-36,2138319538	0.999998	350 M	1% ST	500-0054	28-BR-FOS-SR-B52_1
306-BR-OL-SR	-46.38.25.0546	-36.13.41.9192	-46,6402929352	-36,2283108916	0.999987	350 M	1% ST	500-0054	28-BR-FOS-SR-B52_1
307-BR-OL-SR	-46.39.02.1332	-36.14.33.9558	-46,6505925691	-36,2427655135	0.999994	350 M	1% ST	500-0054	28-BR-FOS-SR-B52_1
308-BR-OL-SR	-46.39.39.4092	-36.15.25.9029	-46,6609470003	-36,2571952492	0.999992	350 M	1% ST	500-0054	28-BR-FOS-SR-B52_1
309-BR-OL-SR	-46.40.16.8818	-36.16.17.7609	-46,6713560489	-36,2716002562	1.000003	350 M	1% ST	500-0054	28-BR-FOS-SR-B52_1
310-BR-OL-SR	-46.40.49.7424	-36.17.02.9221	-46,6804840012	-36,2841450186	0.872377	350 M	1% ST	500-0054	28-BR-FOS-SR-B52_1
311-BR-OL-SR	-46.52.26.5510	-36.23.18.0500	-46,8740419384	-36,3883472184	11.27045	1% ST	1% ST	500-0055	28-BR-FOS-SR-B52_1
312-BR-OL-SR	-47.38.53.2640	-36.49.03.0580	-47,6481288874	-36,8175161093	45.38502	1% ST	1% ST	500-0056	35-BR-FOS-SR-500-0056
313-BR-OL-SR	-47.53.15.5516	-37.14.42.5553	-47,8876532224	-37,2451542388	28.09070			Lateral maritime border with Uruguay	

Brazilian Continental Shelf Survey Project (LEPLAC)

Publisher: Directorate of Hydrography and Navigation (DHN) | <https://www1.mar.mil.br/dhn/>

Graphic design: Conceito Comunicação Integrada | [www.conceito-online.com.br](http://www.conceito-online.com.br)

Printing: Copyhouse | [www.copyhouse.com.br](http://www.copyhouse.com.br)

Printed: 2015

