

UNITED NATIONS
GENERAL
ASSEMBLY



Distr.
GENERAL

A/C.5/1076
28 October 1966

ORIGINAL: ENGLISH

Twenty-first session
FIFTH COMMITTEE
Agenda item 74

BUDGET ESTIMATES FOR THE FINANCIAL YEAR 1967

EXTENSION OF CONFERENCE FACILITIES AT THE PALAIS DES NATIONS

Report of the Secretary-General

I. INTRODUCTION

1. In an interim report^{1/} to the General Assembly at its current session, the Secretary-General gave an account of the action he had taken following the authorization^{2/} he had received from the General Assembly at its twentieth session to proceed with the necessary architectural and engineering studies in order to be able to present to the General Assembly at its twenty-first session plans and estimates of cost for the construction of additional conference facilities at the Palais des Nations. It was indicated in the report that, in consultation with a group of eminent architects, the most practical and economical ways of meeting conference requirements in Geneva, on the basis of past experience and anticipated future programmes, had been explored and that, by the summer of 1966, agreement had been reached on the broad lines of an extension of the Palais for these purposes.

2. The Secretary-General placed his preliminary plans before the Advisory Committee on Administrative and Budgetary Questions when it held the latter part of its summer session in Geneva from 28 June to 8 July 1966. At that time the Committee received supplementary information from the Director-General of the

^{1/} A/C.5/1054.

^{2/} Official Records of the General Assembly, Twentieth Session, Annexes, agenda item 76, para. 39 (c)(i) as endorsed by the General Assembly on 21 December 1965 at its 1408th plenary meeting.

Geneva Office and it was also able to examine three different designs and plans for the proposed extension which had been submitted to the Committee of Architects for consideration. In its relevant report^{3/} to the General Assembly, the Advisory Committee has endorsed the plan for which the Committee of Architects had stated its preference. The report concludes with the recommendation that the Secretary-General proceed with a more detailed and complete presentation of the plan selected, with a view to providing, in a report to be made available to the General Assembly not later than October 1966, full details of its physical aspects and all foreseeable cost elements related thereto.

3. The present report is submitted to the General Assembly in response to the aforementioned recommendation of the Advisory Committee. It contains, in section II, a detailed description of the planned extension; in section III, an estimate of the cost provided by the architects and the Secretary-General's recommendations on the method of financing the project; and in the annex, various views and plans of the proposed extension.

II. DESCRIPTION OF THE PLANNED EXTENSION

4. The plan prepared by the architects takes account of all the factors - sometimes difficult to reconcile - relating to over-all location in the building complex of the Palais des Nations, and provides all the facilities mentioned in the interim report (A/C.5/1054).

5. The new building, separated from the present Palais by a gap more than 20 metres (65 feet) wide, would be located north-north-east of the existing premises (Lausanne side). This side was chosen to meet the following requirements: to preserve the remarkable setting of the Palais with its view on the Ariana Park, the lake and the Alps; to provide convenient, efficient, and relatively short communications with the present buildings; to group four large conference rooms in as compact a space as possible, at the same time providing more committee rooms and related facilities immediately adjacent to the larger rooms and easily accessible; and to provide the new building with convenient access roads and sufficient parking space. Detailed studies were made with a view to satisfying all

^{3/} A/6385, paras. 26 to 30.

the desired conditions, and some fifteen to twenty solutions were considered and rejected by the architects before the final choice was made. This choice, which is necessarily the result of a series of compromises, can be said to constitute the best possible solution.

6. The main facilities included in the plan are:

(a) A large conference room, numbered XX, with a seating capacity of 900 (see annex, plan No. 6), with the following characteristics:

Location: 3rd floor

Dimensions:

Length (average)	about 29 metres (95 feet)
Width	about 39 metres (128 feet)
Height	about 7 metres (23 feet)

Useful space:

Floor level, including rostrum	1,131 square metres (12,174 square feet)
Gallery	60 square metres (646 square feet)

Capacity:

Rostrum

At the table	9 seats	9 seats
Behind the table	16 seats	<u>16</u> seats
Total at rostrum		25 seats

Floor level

Delegates at the tables	140 seats
Advisers sitting immediately behind the delegates	280 "
Specialized agencies and NGO's	
Sitting at the tables	20 "
Sitting immediately behind	20 "
Additional advisers, observers, etc.	140 "
Press	75 "
Others	<u>100</u> "
Total on floor level	800 seats

Gallery

For the public	<u>100</u> seats
TOTAL, floor level and gallery, room XX	<u>900</u> seats

/...

Booths:

Interpreters 6 booths each 2.40 metres (8 feet) wide

Operator)
Sound recording) 1 booth 3 x 4.50 metres (10 x 15 feet)

Additional booths for television, cinematography, photography, radio, verbatim reporting, précis-writing.

(b) Three conference rooms, numbered XVII, XVIII and XIX, with seating accommodation for 610, 630 and 620 people respectively (see annex, plans Nos. 4 and 6).

There is so little difference between these rooms that it will be sufficient to give particulars of the capacity of one of them (room XIX, annex, plan No. 6):

Location: 3rd floor

Dimensions:

Length (average) about 27 metres (89 feet)

Width about 29 metres (95 feet)

Height about 7 metres (23 feet)

Useful space:

Floor level, including rostrum 783 square metres (8,426 square feet)

Gallery 35 square metres (376 square feet)

Capacity:Rostrum

At the table 9 seats

Behind the table 11 "
20 seats

Floor level

Delegates at the tables 140 seats

Advisers sitting immediately behind delegates 140 "

Specialized agencies and NGO's
Sitting at the tables 20 "

Sitting immediately behind 20 "

Additional advisers, observers, etc. 60 "

Press 50 "

Others 120 "

Total on floor level 570 seats

/...

Gallery

For the public	<u>50</u> seats
TOTAL, floor level and gallery, room XIX	<u>620</u> seats

Booths:

Interpreters	6 booths each 2.40 metres (8 feet) wide
Operator) Sound recording)	1 booth 3 x 4.50 metres (10 x 15 feet)

Additional booths for television, cinematography, photography, radio, verbatim reporting, précis-writing.

(c) Six small meeting rooms, numbered XXI to XXVI, located on the 1st floor, at the same level as rooms XVII and XVIII in the new building and room XV in the old building.

Each of these rooms provides seating accommodation for 152 people, but rooms XXI and XXII can be converted into a single room with seating accommodation for 340 people; the same applies to rooms XXIV and XXV (see annex, plan No. 4). The characteristics of these rooms are all similar, and rooms XXI and XXII may be considered typical:

Dimensions:

Length (average)	about 15 metres (49 feet)
Width	about 19 metres (62 feet)
Height	about 3.60 metres (12 feet)

Useful space: 285 square metres (3,068 square feet)

Capacity:

Floor level

Delegates at the tables, including Chairman's table	60 seats
Advisers	80 "
Secretariat, at the centre	<u>12</u> "
Total	<u>152</u> seats

Booths:

Interpreters	5 booths each 2.40 metres (8 feet) wide
Operator) Sound recording)	1 booth 3 x 4.50 metres (10 x 15 feet)

/...

Capacity of combined rooms XXI and XXII:

Delegates at the tables	140 seats
Advisers	176 "
Secretariat	<u>24</u> "
	<u>340</u> seats

The large room formed by removing a movable partition will have more than twice the capacity of each separate room, because additional tables can be placed in the space left free by the partition.

All the rooms will be equipped with a complete system of wired simultaneous interpretation with eight channels for rooms XVII to XX and six channels for rooms XXI to XXVI. There will be one microphone for each seat at the President's table and one for every two delegates at their tables.

The lobby adjoining rooms XVII and XVIII, on the lake side (see annex, plan No. 4) will be large enough for use as an exhibition hall.

(d) A delegates' lounge on the second floor, lake side (see annex, plan No. 5) adjacent to all facilities: information desk, documents distribution, post and telegraph office, bank, travel agency, etc.

The lounge has direct access to the conference rooms by stairs leading to the lobbies. The floor space is nearly 1,000 square metres (about 10,500 square feet). In an extension of the lounge at the Lausanne end, provision has been made for a snack-bar to provide refreshments and light meals.

(e) A total floor space of about 4,600 square metres (approximately 49,000 square feet) for conference offices and offices for the language and stenographic services.

First, the plan provides for offices near the conference rooms, mainly on the fourth floor (see annex, plan No. 7), for use during conferences (President or Chairman, senior officials and secretariat of assemblies, councils or committees). Most of these offices will face the lake or the Jura. Secondly, the whole of the upper floor, which corresponds to the fifth floor of the Palais, is devoted to offices for the language services, of dimensions varying in accordance with the needs of these services (see annex, plan No. 8). Lastly, the lower floor, which corresponds to the ground floor of the Palais, will accommodate in addition to the

/...

Press area described below, premises for documents reproduction, documents distribution, and storage of publications, documents, supplies and furniture. On the same floor, at the Lausanne end of the building, there is a service yard specially laid out for delivery of supplies. A connecting gallery provides the necessary means of access from the delivery platform (see annex, plan No. 3).

(f) The main entrance to the building, situated on the Jura side at the same level as doors 13 and 15 which provide access to the Assembly building (see annex, plan No. 5).

The lobby of this entrance will have all the necessary facilities for a delegates' entrance (cloakroom, news-stand and tobacconist, and small offices for temporary use e.g. protocol or security, documents distribution counter, post office, telephone, telegraph and telex office, information desk, travel agency, photographer's stand, etc.). Provision is also made for another entrance on the Lausanne side, mainly for the staff.

(g) The visitors' entrance, in the area separating the new building from the library of the Palais des Nations.

This entrance gives access to a lobby which communicates directly with the philatelic museum, room XIV, which can be used as a cinema, sales counters and a small room intended for a snack bar (see annex, plan No. 4).

(h) The Press area, situated below the visitors' lobby (see annex, plan No. 3).

This area includes a lobby with bar, a Press room, some offices, a television studio with a large adjoining room (for control desk and storage facilities, or possibly an auxiliary studio), five broadcasting studios (one large enough for "round table" meetings) with control desk and sound recording facilities, dark rooms, telex facilities and telephone booths. Access to the Press area is by an entrance next to the visitors' entrance, or by another entrance on the park side or by the connecting tunnel at the ground floor level of the Palais.

(i) The restaurant

Studies and consultations have shown the general view to be that it would be better to enlarge the existing restaurant at the top of the Assembly building than to construct a new one as part of the Palais extension. The plan therefore provides for enlargement of the present restaurant by incorporating the adjoining terraces

/...

(see annex, plan No. 12) which will more than double its capacity. Instead of seating 170 as at present, it will seat about 400 people, or rather more with extra chairs at some tables. The question of the cafeteria has also been considered and the plan provides for its enlargement in the same location (see annex, plan No. 3) by moving the kitchen and offices and incorporating the existing passage areas, which will be replaced by the new connecting tunnels described in paragraph (1) below.

(j) Air-conditioning

It is obviously necessary to air-condition areas such as the conference rooms and their booths, and the basements. However, the question of extending air-conditioning to other parts of the new building is being thoroughly examined, with a view to reducing installation costs as much as possible and, especially, keeping operating costs down in the future. In addition, the outside walls will be treated to keep heating by the sun down to a minimum thus reducing the amount of refrigeration needed to air-condition the lobbies of the conference rooms.

(k) Parking facilities

The car parks in the United Nations grounds now provide space for about 1,000 cars; with the exception of some twenty parking spaces under cover but not enclosed, all parking is in the open. The plan provides for 500 additional parking spaces, on the Lausanne side, under cover but not underground, which will be partly concealed by landscaping.

(l) Means of communication

It was considered essential to provide access to the new building at several levels. First, the need for a bridge at the third floor level of the Palais (see annex, plans Nos. 9 and 11) was recognized in spite of the aesthetic problems it raises. Firstly, it is important to have direct communication at the level (third floor of the Palais) on which are situated the Assembly Hall, all the conference rooms on the main gallery and the new rooms XIX and XX, the latter being the largest conference room in the new building. Secondly, it was considered necessary to provide communications at each of the lower levels corresponding to the first floor, ground floor and lower ground floor of the Palais des Nations. The plan therefore provides for communication with room XIV and with staircase No. 17 on the first floor (see annex, plan No. 4) and for a tunnel on two levels

/...

under the Cour d'honneur (see annex, plans Nos. 2, 3 and 11) directly connecting the new building with the library building (B building), the Assembly building (A building) and the Council Room building (C building). The upper level of the tunnel is intended for general use and the lower level for service traffic (document trolleys, supplies, etc.).

7. Should the General Assembly approve the proposed extension of the Palais des Nations as set forth in the preceding paragraph, the Secretary-General would envisage the following timetable, drawn up in consultation with the architects:

(a) Excavation

Tenders and awards	Late spring 1967
Work completed	End 1967

(b) Construction

Plans completed	30 June 1967
Tenders	July 1967
Awards	Autumn 1967
Operations	1 January-31 December 1968
Fittings, equipment, decoration	1 January 1969-30 April 1970

On these assumptions, the new conference facilities would be ready for use by the middle of 1970.

III. COST AND FINANCING OF THE PROJECT

Cost estimates

8. The architects have estimated that the costs of the complete project (including new construction connecting tunnel and passages, enlargement of the restaurant and cafeteria, car parks, roads, architects' and engineers' fees and an allowance for administrative costs) will total some Swiss francs 58,750,000 (\$13,600,000).

9. The above-noted amount has been based on 1966 prices and does not include any provision for contingencies including increases in cost of labour and materials between now and 1970. Whereas the extent of such increases cannot be determined with precision at the present time, it would appear not unreasonable to the Secretary-General to evaluate it at approximately 10 per cent. In such event, the over-all costs would become about Swiss francs 64.8 million or approximately \$15 million.

/...

10. Based on the detailed costing of specific items provided by the architects, the following costs are envisaged:

	\$	Sw Fr
A. THE NEW BUILDING		
(1) <u>Structure</u>	3,301,000	14,260,000
(a) Excavating the ground and building the foundations	\$694,500 (Sw Fr 3,000,000)	
(b) Building the super- structure in reinforced concrete and steel	\$2,467,600 (Sw Fr 10,610,000)	
(c) Building the roofs	\$138,900 (Sw Fr 600,000)	
(2) <u>Installations and equipment</u>	6,809,500	29,417,000
(a) Heating, ventilation, air-conditioning and sanitary installations	\$1,721,100 (Sw Fr 7,435,000)	
(b) Electrical installations, passenger lifts, service lifts and escalators	\$1,235,400 (Sw Fr 5,337,000)	
(c) Building and finishing the floors, ceilings and walls, inside and outside	\$2,537,000 (Sw Fr 10,960,000)	
(d) Furniture for conference rooms and offices, and installation of fixtures throughout the building, including simultaneous interpretation	\$1,316,000 (Sw Fr 5,685,000)	
TOTAL ITEM A	<u>10,110,500</u>	<u>43,677,000</u>
B. CONNECTING TUNNELS	442,100	1,910,100
C. CAFETERIA	461,900	1,995,400

/...

	\$	Sw Fr
D. RESTAURANT EXTENSION	591,800	2,556,500
E. OUTSIDE WORK, CAR PARKS	<u>715,300</u>	<u>3,090,000</u>
	12,321,600	53,229,000
Provision for contingencies	<u>1,382,100</u>	<u>5,971,000</u>
TOTAL, ITEMS A TO E	13,703,700	59,200,000
F. FEES FOR ARCHITECTS, ENGINEERS AND ADMINISTRATIVE COSTS	1,296,300	5,600,000
(i) Architects' fees . . . \$ 532,400 (Sw Fr 2,300,000)		
(ii) Engineers' fees. . . . \$ 300,900 (Sw Fr 1,300,000)		
(iii) Administrative costs \$ 463,000 (Sw Fr 2,000,000)		
	<u>15,000,000</u>	<u>64,800,000</u>

Financing

11. The Swiss Federal Government and the Republic and Canton of Geneva have indicated that they are prepared to offer a donation of 4 million Swiss francs (\$925,000) to cover part of the costs of the project. Additionally, with the approval of the Swiss Federal Council, the "Fondation des Immeubles pour les Organisations Internationales" is prepared to grant a loan as required up to a maximum of 61 million Swiss francs (\$14,120,000) at 3 per cent interest to assist in financing the project. The loan would be reimbursable during a period of ten years.

12. It is believed that work undertaken in accordance with the plans outlined above would result in expenditures during the period 1967 to 1971 of the following order (figures in US dollars):

	\$
1967	1,000,000
1968	2,300,000
1969	5,000,000
1970	5,700,000
1971	<u>1,000,000</u>
	<u>15,000,000</u>

/...

The Secretary-General recommends that during the period 1967-1971 these costs be met partially by acceptance of the generous offer of a gift from the Swiss Federal Government and the Republic and Canton of Geneva (\$925,000) partially by budgetary appropriations in annual amounts of \$1 million (\$5,000,000) and partially by a loan from the "Fondation des Immeubles pour les Organisations Internationales" (\$9,075,000).

13. Reimbursement of the loan would be made during the period 1972-1980 after the construction of the new building was completed. It may be recalled that at its twentieth session the General Assembly approved a programme of major maintenance and improvements for the Palais commencing in 1966 at a total cost of \$4,894,200, authorized the Secretary-General to accept the generous offer of the Swiss Federal Government of a loan of 8.5 million Swiss francs (\$1,967,000) reimbursable over the five-year period 1970-1974, and decided to provide for the financing of the programme in such a way that, taking account of the repayment of the loan over the years 1970-1974, the amounts falling to be met from the budget estimates in the successive years over the period 1967-1974 should be approximately equal, i.e. \$612,000 annually. With the aims of maintaining annual budgetary appropriations at similar levels and of keeping interest charges for the new loan as low as possible, the Secretary-General recommends that annual budgetary amounts of \$1 million be continued until the year 1974 for repayment of the new loan and interest charges and thereafter be increased to \$1.5 million. The debt to the "Fondation des Immeubles pour les Organisations Internationales" would thus be liquidated within a nine-year period with a final instalment to be made in 1980. Under such arrangements the financing of the project would be in accordance with the following summary:

<u>Year</u>	<u>Requirements</u> \$	<u>Budget</u> \$	<u>Gift</u> \$	<u>Loan</u> \$
1967	1,000,000	1,000,000	-	-
1968	2,300,000	1,000,000	925,000	375,000
1969	5,000,000	1,000,000	-	4,000,000
1970	5,700,000	1,000,000	-	4,700,000
1971	<u>1,000,000</u>	<u>1,000,000</u>	<u>-</u>	<u>-</u>
	<u>15,000,000</u>	<u>5,000,000</u>	<u>925,000</u>	<u>9,075,000</u>

Repayment of loan and interest at 3 per cent

	<u>Budget</u>
1972-1974 (annual amounts of \$1,000,000)	\$ 3,000,000
1975-1979 (annual amounts of \$1,500,000)	7,500,000
1980	<u>495,000 (approx.)</u>
	\$10,995,000

14. If the General Assembly decides to approve the project for the extension of the Palais, the Secretary-General recommends that the Assembly:

(a) Authorize the Secretary-General to proceed with the plans for extension of the Palais des Nations within a maximum expenditure of \$15,000,000;

(b) Authorize the Secretary-General to accept the offer of the Swiss authorities of a gift of 4 million Swiss francs (\$925,000) towards the cost of the project and to accept a loan, as required, at 3 per cent interest to assist in the financing and to be repayable in instalments within the period 1972 to 1980;

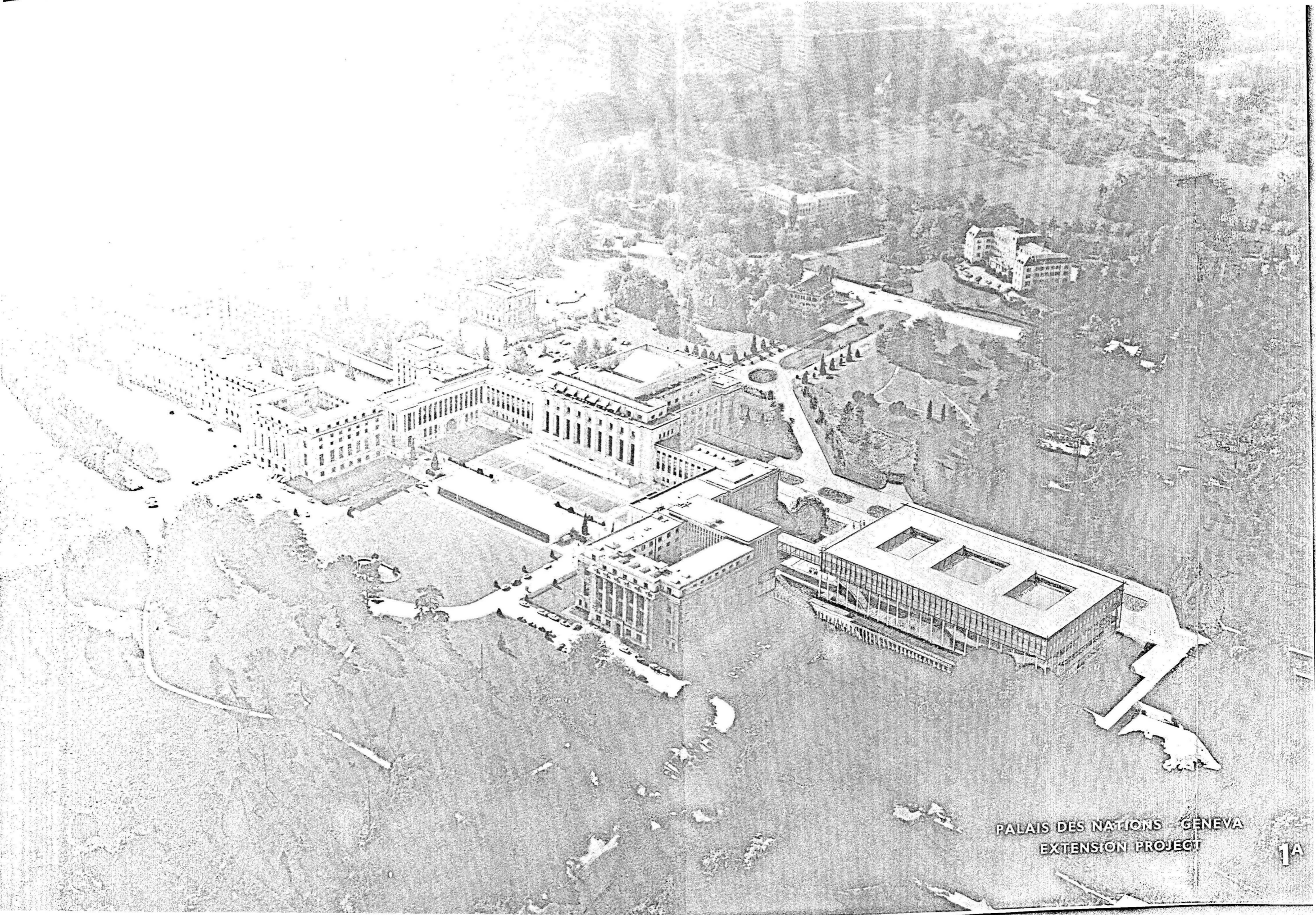
(c) Decide to finance the programme in such a way that the amount to be met from the budget estimates in successive years over the period 1967 to 1980, shall be:

	\$
1967-1974	1,000,000
1975-1979	1,500,000
1980	495,000

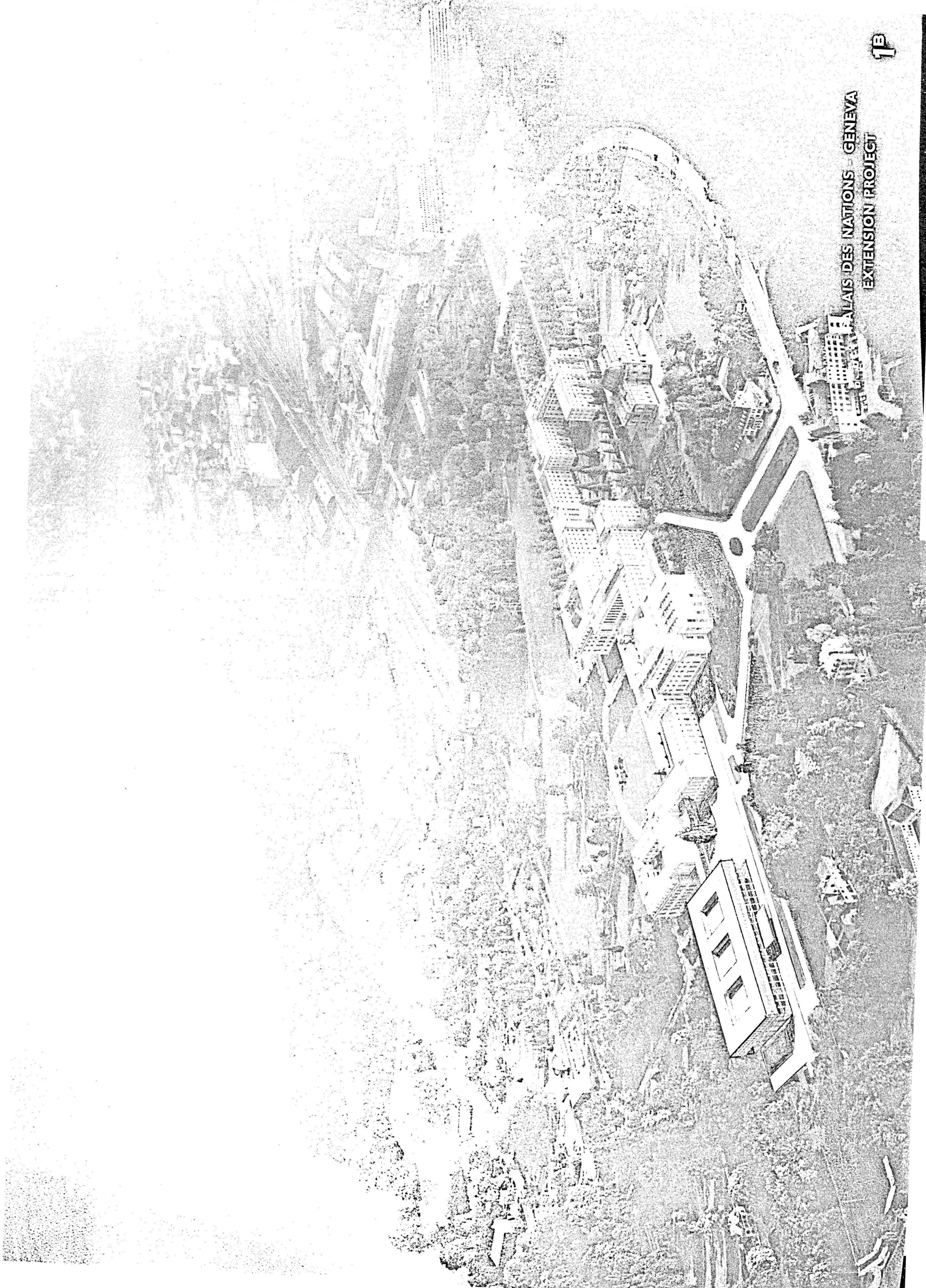
(d) Decide to establish a special account for which all funds made available for the extension of the Palais project would be deposited and to which the unexpended balance of the annual appropriations would automatically revert.

ANNEX

PHOTOMONTAGES AND PLANS



PALAIS DES NATIONS - GENEVA
EXTENSION PROJECT



PALEIS DES NATIONS - GENEVA
EXTENSION PROJECT

No. 2

PALAIS DES NATIONS - GENEVA

EXTENSION PROJECT

BASEMENT - LEVEL 409.00

SCALE 1.1000

1. DELIVERIES
2. CONNECTING GALLERY
3. AIR CONDITIONING PLANT
4. STORES
5. SERVICE TUNNEL
6. ACCESS TO LIBRARY
7. ACCESS TO ASSEMBLY RESTAURANT
8. ACCESS TO COUNCIL BUILDING
9. ACCESS TO CAFETERIA
10. RESERVED
11. CAFETERIA OFFICES AND RESTAURANT
12. LIAISON WITH BUILDING D

No. 3

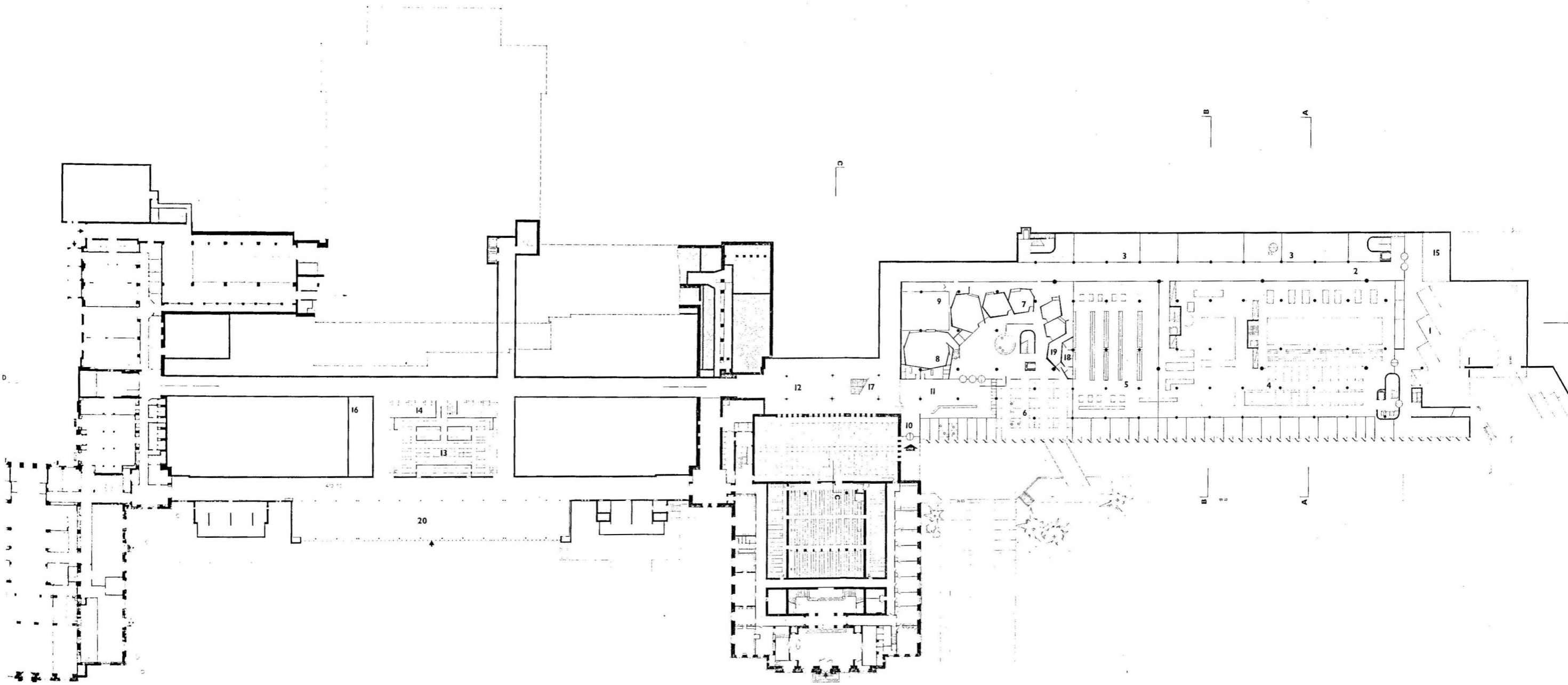
PALAIS DES NATIONS - GENEVA

EXTENSION PROJECT

GROUND FLOOR - LEVEL 412.00

SCALE 1.1000

1. SERVICE YARD: DELIVERIES
2. CONNECTING GALLERY
3. SUPPLIES AND FURNITURE STORES
4. DOCUMENTS REPRODUCTION
5. DOCUMENTS DISTRIBUTION
6. PRESS ROOM
7. BROADCASTING STUDIOS
8. T.V. STUDIO 100 m²
9. T.V. CONTROL ROOM
10. PRESS ENTRANCE
11. PRESSE LOBBY
12. STAFF TUNNEL
13. CAFETERIA EXTENSION
14. SHOPS
15. POST OFFICE DESPATCHING
16. CAFETERIA VENTILATION
17. ACCESS TO CONFERENCE ROOM LEVEL
18. LABORATORY AND DARK ROOM
19. SOUND RECORDING
20. CAFETERIA



PALAIS DES NATIONS - GENEVA
EXTENSION PROJECT

GROUND FLOOR - LEVEL 412.00

Scale 1.1000

No. 4

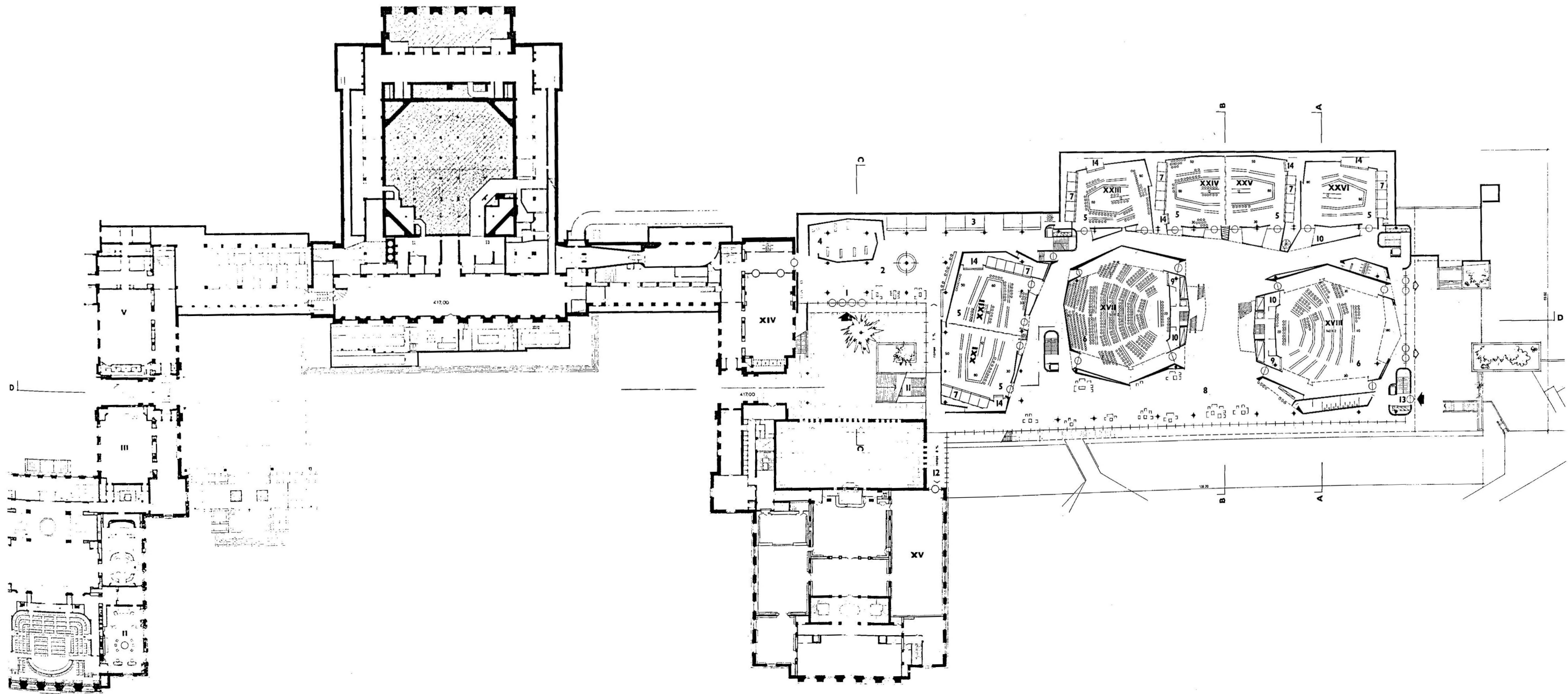
PALAIS DES NATIONS - GENEVA

EXTENSION PROJECT

FIRST FLOOR - LEVEL 416.00

SCALE 1.1000

1. VISITORS ENTRANCE
2. VISITORS LOBBY
3. SHOPS
4. PHILATELIC MUSEUM
5. SIX CONFERENCE ROOMS SEATING 152
6. TWO CONFERENCE ROOMS SEATING 630 AND 610
7. INTERPRETERS' BOOTHS
8. DELEGATES' LOBBY - EXHIBITIONS
9. DOCUMENTS DISTRIBUTION
10. CHAIRMEN'S OFFICES
11. ACCESS TO CAFETERIA
12. COMMUNICATION WITH CONFERENCE ROOM XV
13. STAFF ENTRANCE
14. OPERATOR AND SOUND RECORDING
15. ROOM XIV (CINEMA)



PALAIS DES NATIONS - GENEVA
EXTENSION PROJECT

FIRST FLOOR - LEVEL 416.00

Scale 1.1000

No. 5

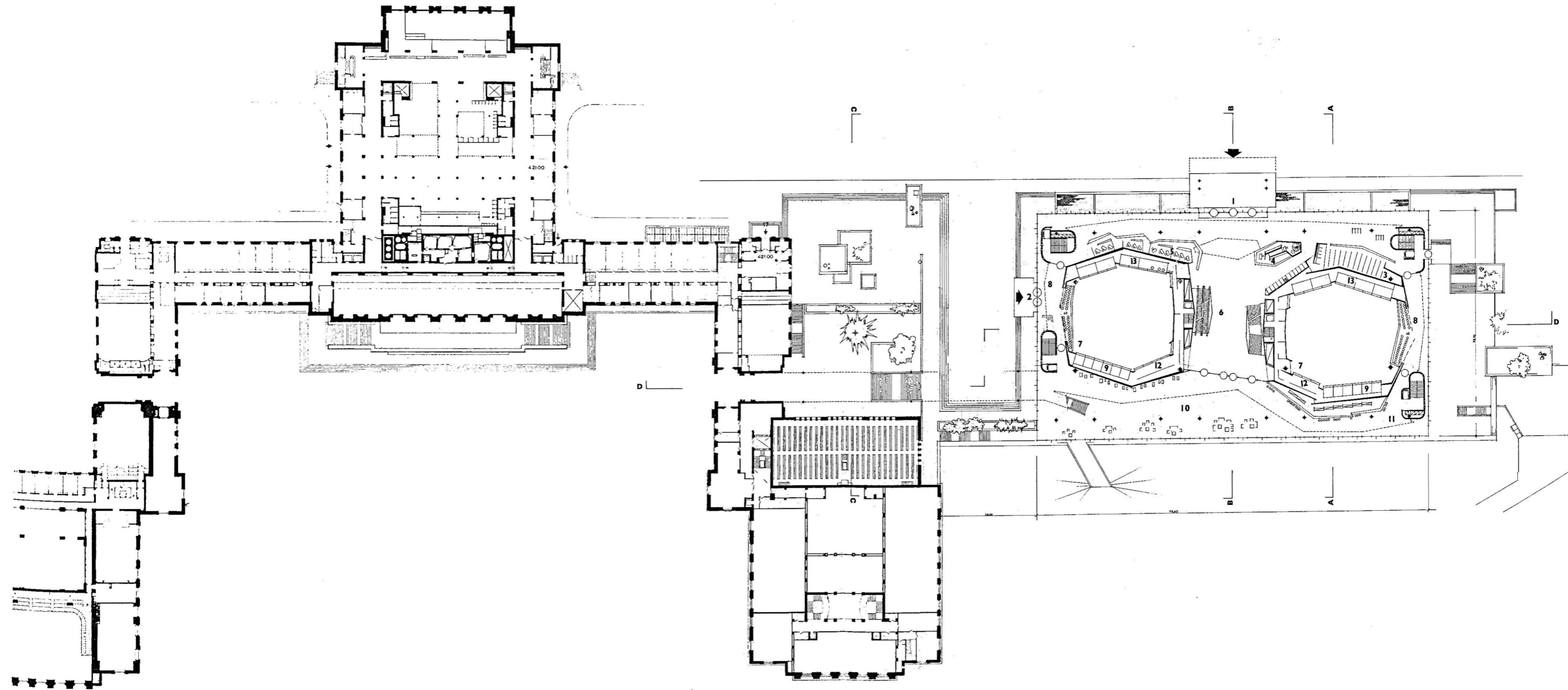
PALAIS DES NATIONS - GENEVA

EXTENSION PROJECT

SECOND FLOOR - LEVEL 421.00

SCALE 1.1000

1. DELEGATES' ENTRANCE
2. PUBLIC AND PRESS ENTRANCE
3. CLOAKROOMS
4. INFORMATION, DOCUMENTS DISTRIBUTION
5. FACILITIES
6. HALL WITH ESCALATORS
7. SPACE ABOVE CONFERENCE ROOMS
8. PUBLIC GALLERY
9. INTERPRETERS' BOOTHS
10. DELEGATES' LOUNGE
11. SNACKBAR
12. OPERATOR AND SOUND RECORDING
13. RADIO, T.V. AND PHOTOGRAPHERS



**PALAIS DES NATIONS - GENEVA
EXTENSION PROJECT**

SECOND FLOOR - LEVEL 421.00
Scale 1.1000

No. 6

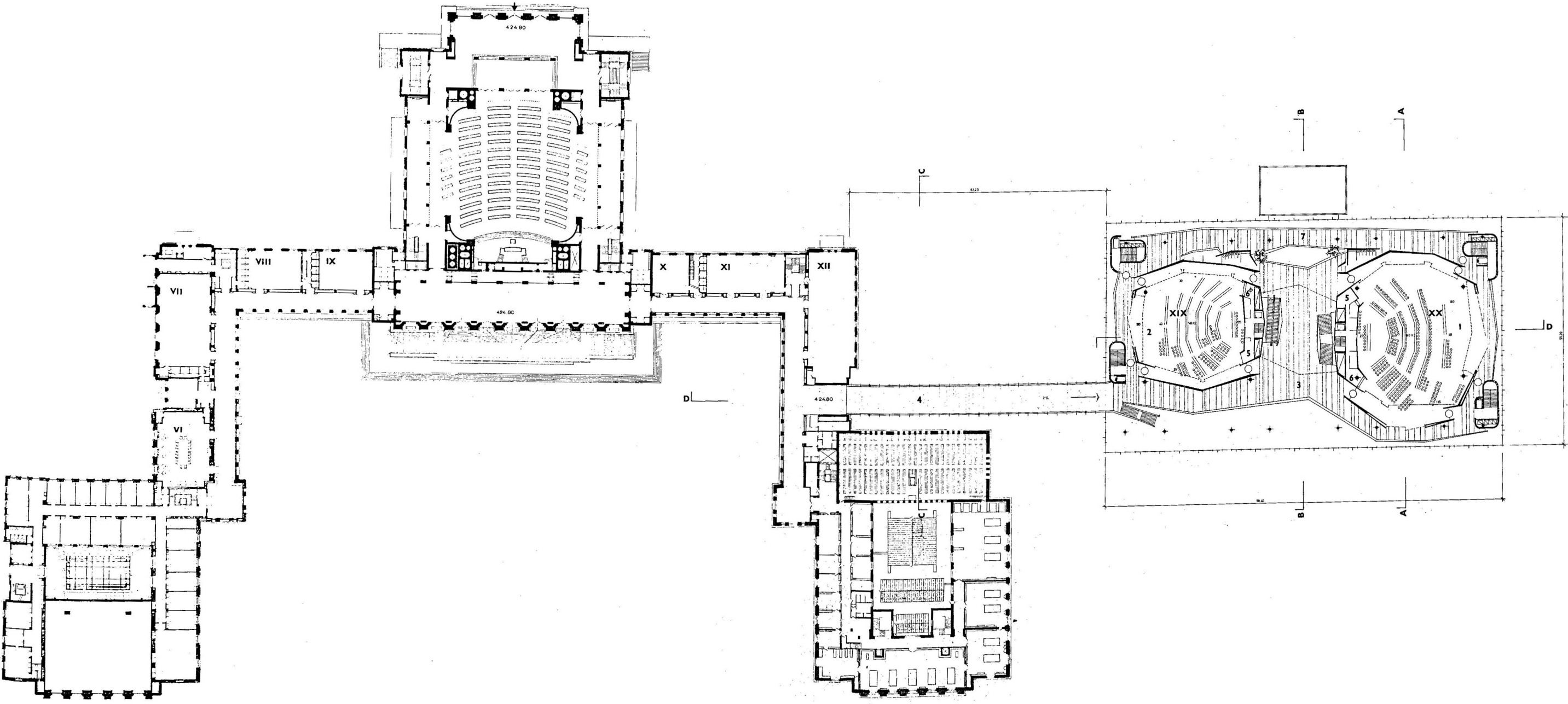
PALAIS DES NATIONS - GENEVA

EXTENSION PROJECT

THIRD FLOOR - LEVEL 425.00

SCALE 1.1000

1. LARGE CONFERENCE ROOM SEATING 900
2. CONFERENCE ROOM SEATING 620
3. LOBBY
4. COMMUNICATION WITH PALAIS
5. PRESIDENTS' OFFICES
6. DOCUMENTS DISTRIBUTION
7. ACCESS GALLERY FOR PUBLIC



**PALAIS DES NATIONS - GENEVA
EXTENSION PROJECT**

THIRD FLOOR - LEVEL 425.80
Scale 1.1000

No. 7

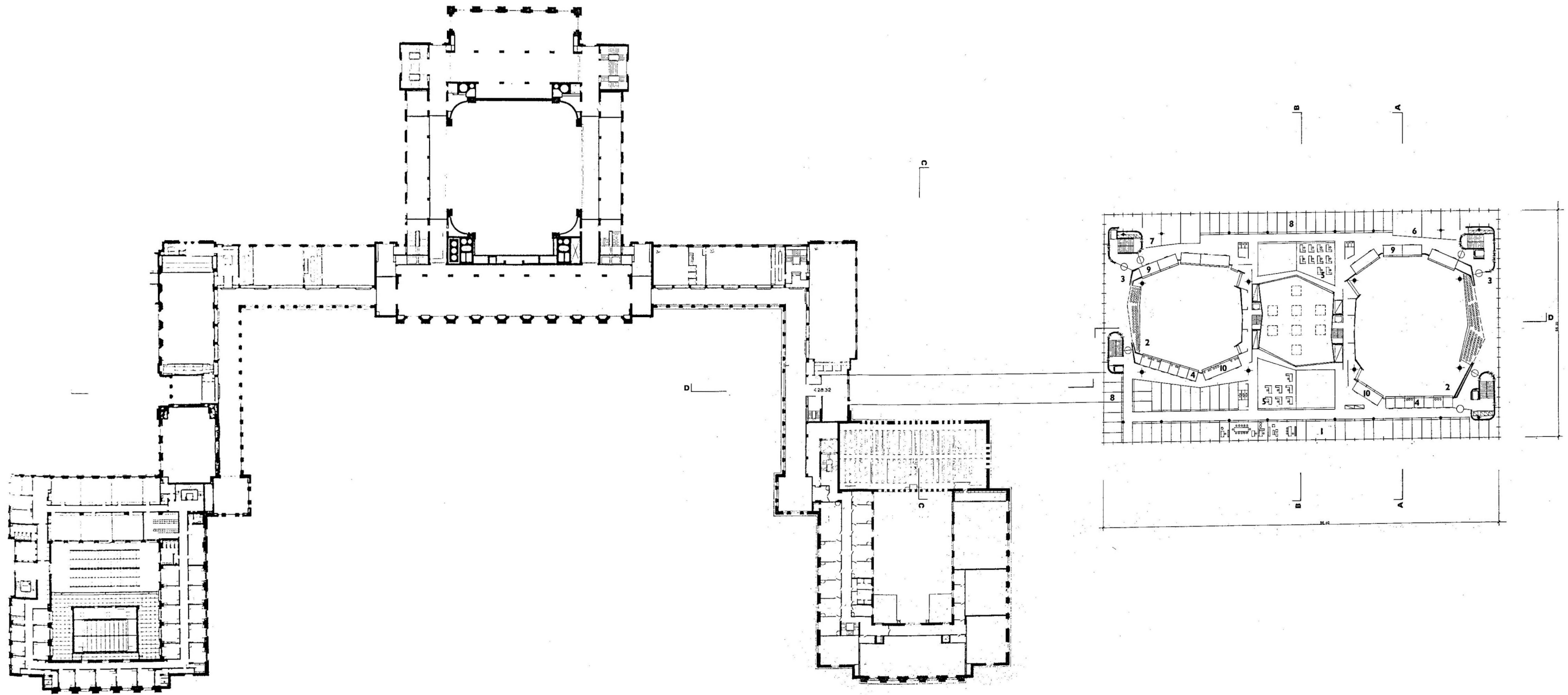
PALAIS DES NATIONS - GENEVA

EXTENSION PROJECT

FOURTH FLOOR - LEVEL 430.20

SCALE 1.1000

1. PRESIDENTS' OFFICES
2. SPACE ABOVE CONFERENCE ROOMS
3. PUBLIC GALLERY
4. INTERPRETERS' BOOTHS
5. TYPING POOLS
6. INTERPRETERS' ROOM
7. OFFICES, 40 m²
8. OFFICES
9. RADIO, T.V. PHOTOGRAPHERS
10. OPERATOR AND SOUND RECORDING



**PALAIS DES NATIONS - GENEVA
EXTENSION PROJECT**

FOURTH FLOOR - LEVEL 430.20

Scale 1.1000

No. 8

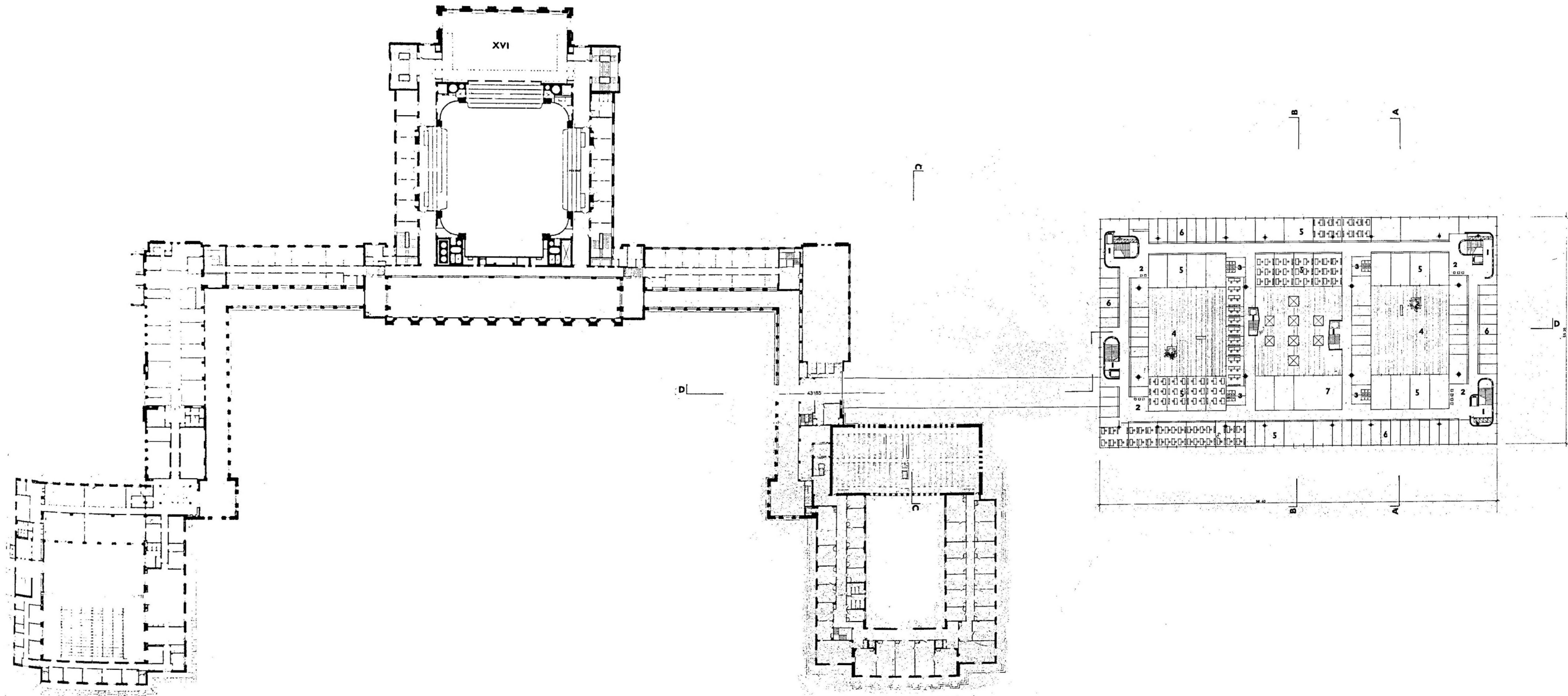
PALAIS DES NATIONS - GENEVA

EXTENSION PROJECT

FIFTH FLOOR - LEVEL 434.20

SCALE 1.1000

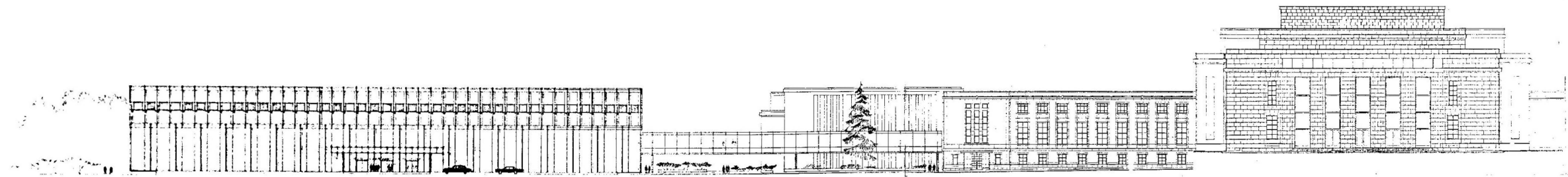
1. STAIRS AND LIFT
2. FREE SPACE
3. LAVATORIES
4. TERRACE
5. OFFICES
6. OFFICES
7. OFFICES



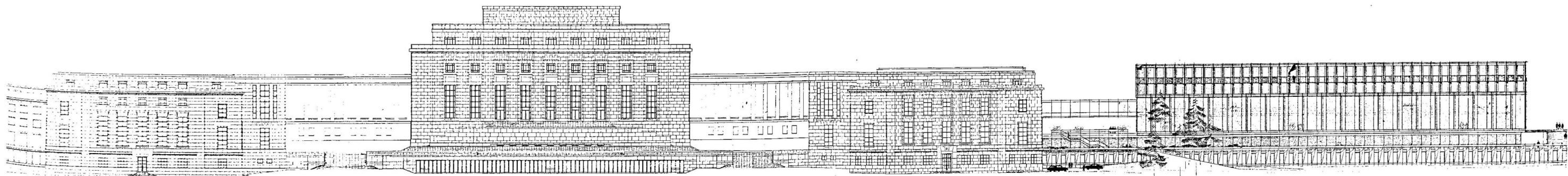
**PALAIS DES NATIONS - GENEVA
EXTENSION PROJECT**

FIFTH FLOOR - LEVEL 434.20

Scale 1.1000



FAÇADE JURA SIDE

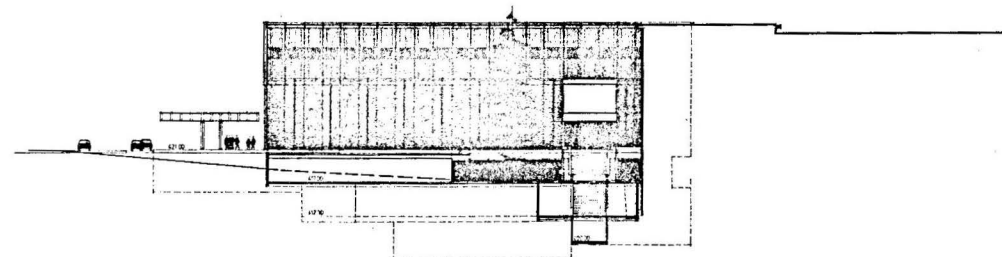


FAÇADE LAKE SIDE

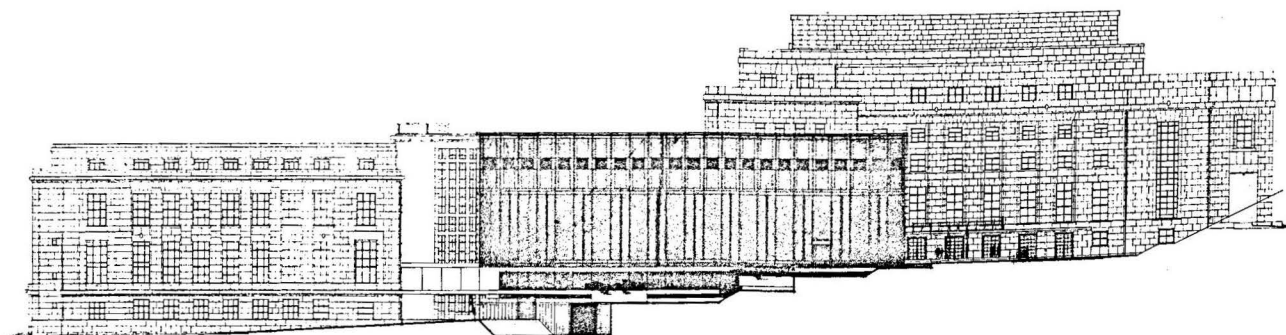
PALAIS DES NATIONS - GENEVA
EXTENSION PROJECT

MAIN FAÇADES

Scale 1.1000



FAÇADE GENEVA SIDE



FAÇADE LAUSANNE SIDE

PALAIS DES NATIONS - GENEVA
EXTENSION PROJECT

LATERAL FAÇADES
Scale 1.1000

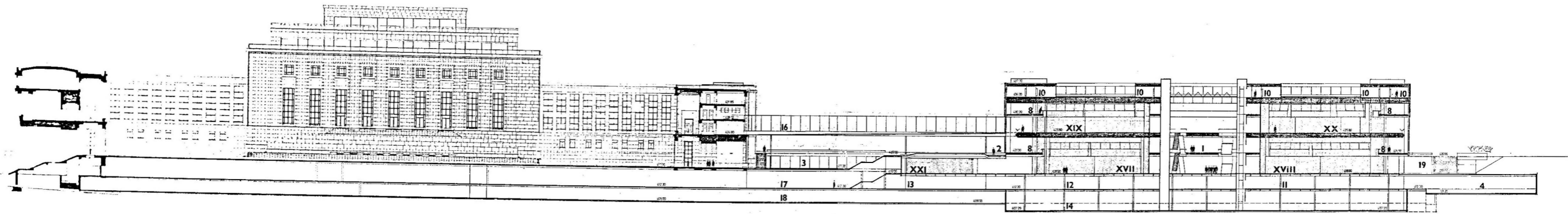
No. 11

PALAIS DES NATIONS - GENEVA

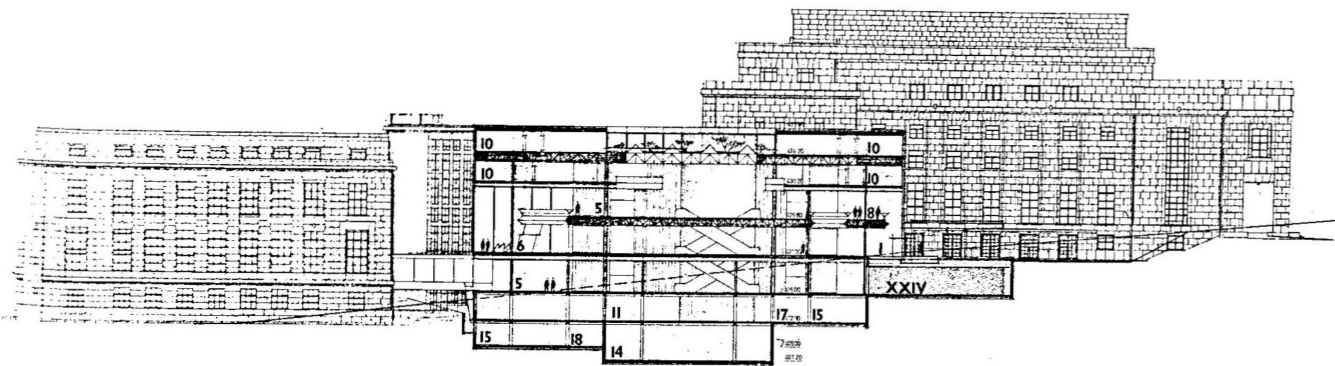
EXTENSION PROJECT

SECTIONS - SCALE 1.1000

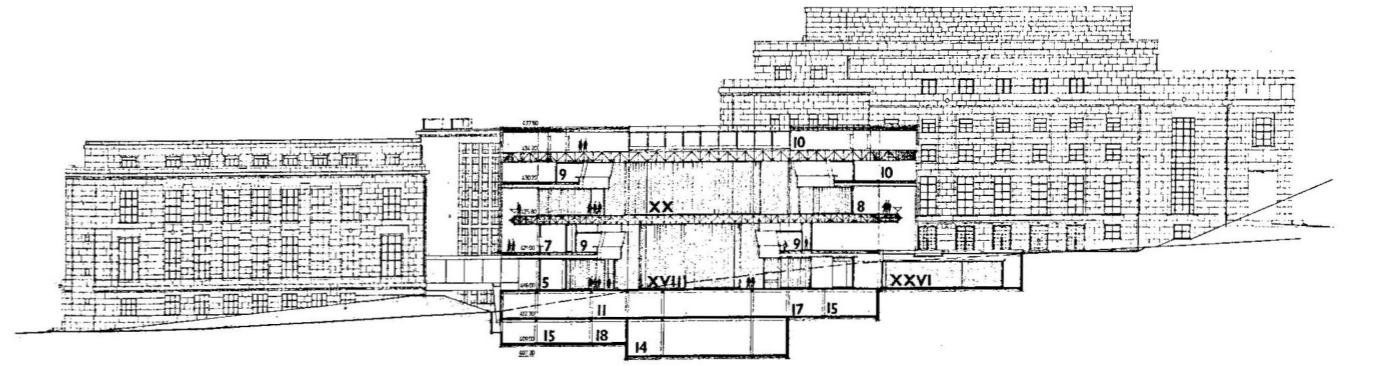
1. DELEGATES' ENTRANCE
2. PUBLIC ENTRANCE
3. VISITORS ENTRANCE
4. SERVICE YARD
5. LOBBY
6. DELEGATES LOUNGE
7. SNACKBAR
8. PUBLIC GALLERIES
9. INTERPRETERS' BOOTHS
10. OFFICES
11. DOCUMENTS REPRODUCTION
12. DOCUMENTS DISTRIBUTION
13. PRESS
14. ENGINEERING SERVICES
15. STORE
16. CONNECTING GALLERY - 3RD FLOOR
17. COMMUNICATING PASSAGE, GROUND FLOOR
18. SERVICE TUNNEL
19. STAFF ENTRANCE



D-D



B-B



A-A

PALAIS DES NATIONS - GENEVA
EXTENSION PROJECT

SECTIONS
Scale 1.1000

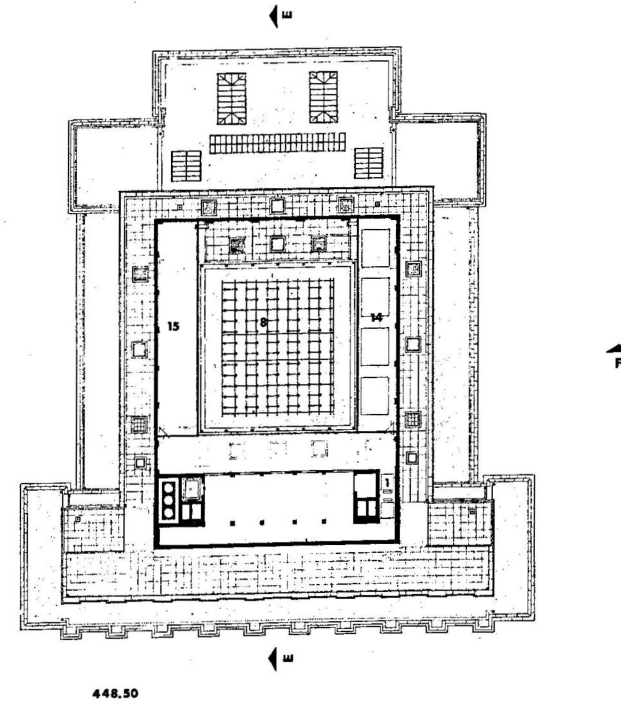
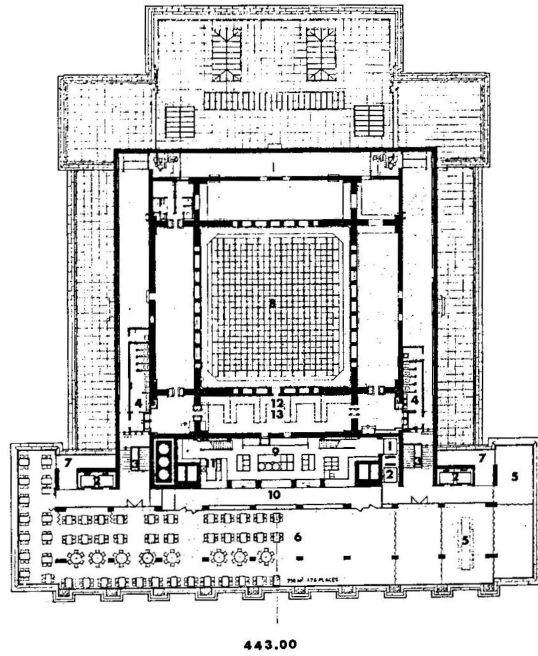
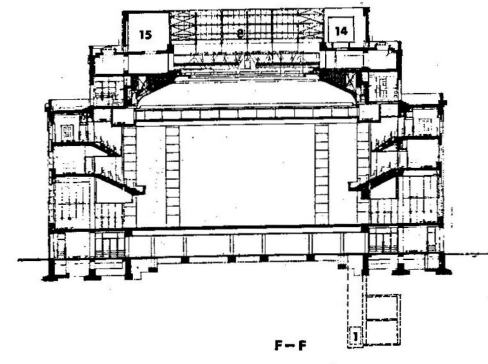
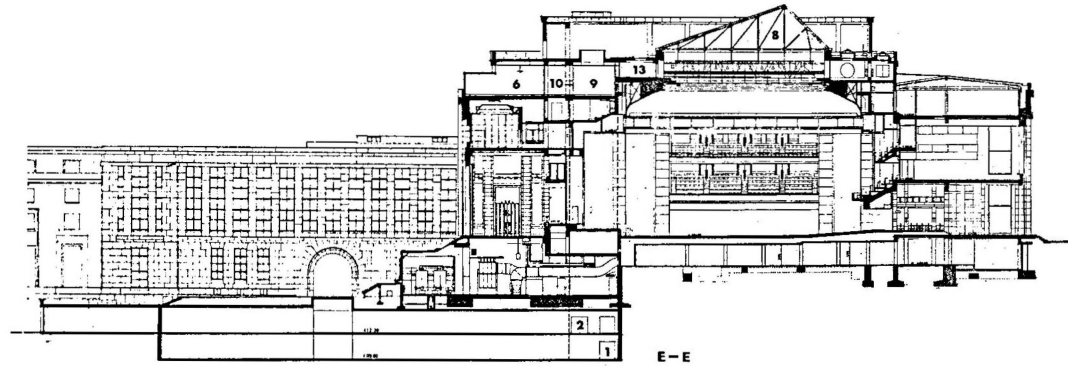
No. 12

PALAIS DES NATIONS - GENEVA

EXTENSION PROJECT

RESTAURANT - 8TH FLOOR - LEVEL 443.00

1. SERVICE LIFT
2. DELEGATES' LIFT
3. STAIRCASE
4. LAVATORIES
5. LOUNGE
6. RESTAURANT
7. CLOAKROOM
8. SKYLIGHT
9. KITCHEN
10. PANTRY
11. SCULLERY
12. PREPARATION
13. STORES
14. REFRIGERATION TOURERS
15. VENTILATION ROOMS



PALAIS DES NATIONS - GENEVA
EXTENSION PROJECT

RESTAURANT
Scale 1.1000