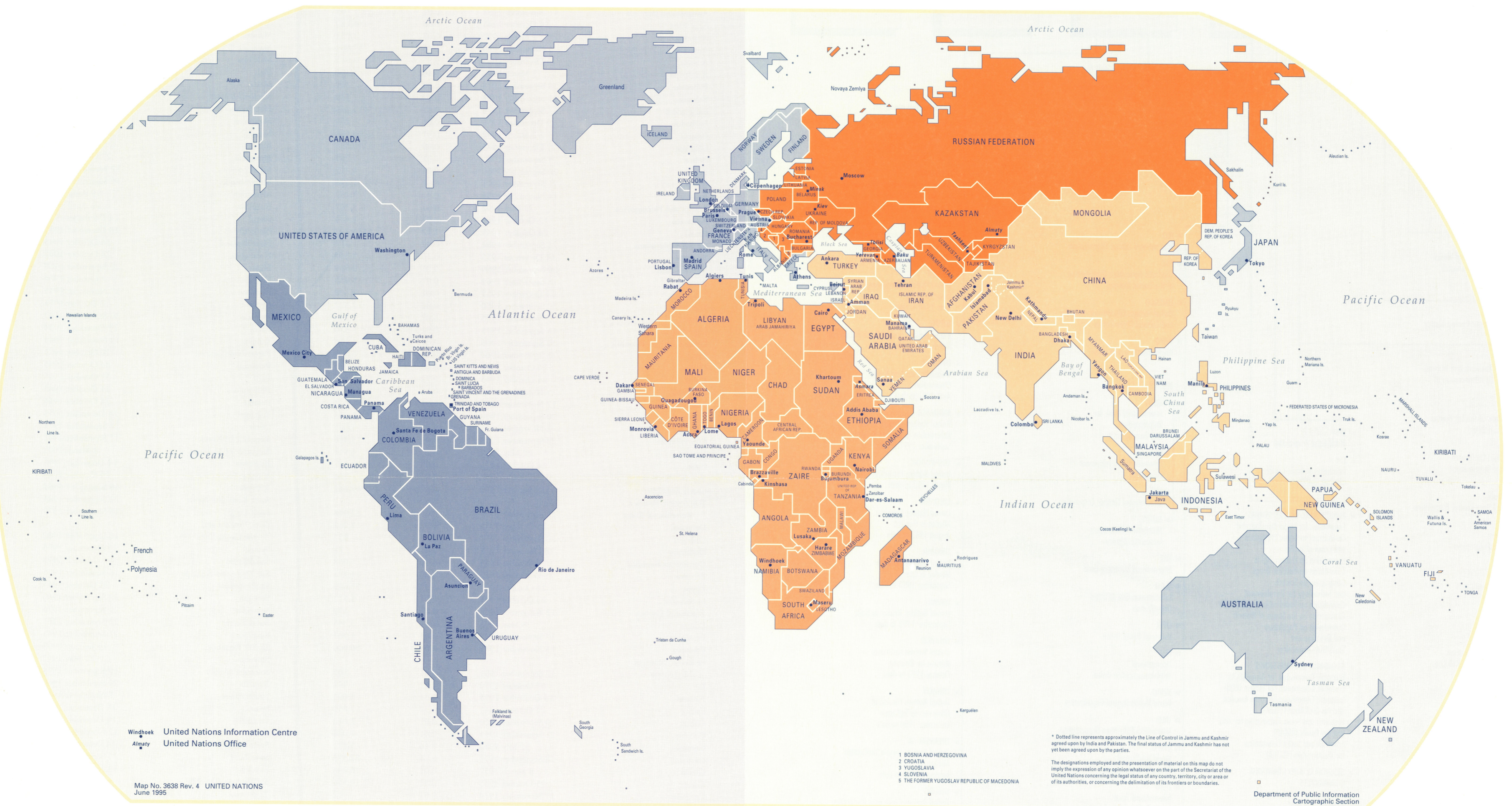
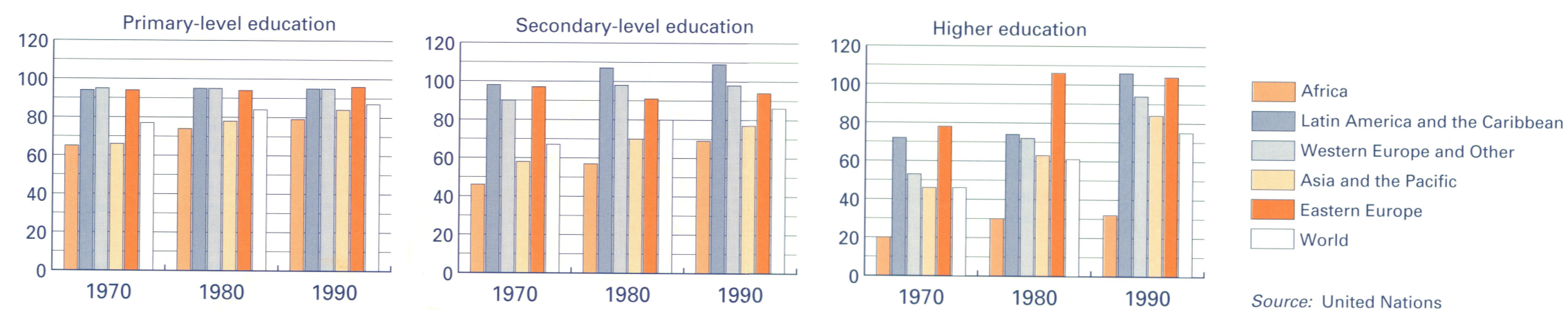


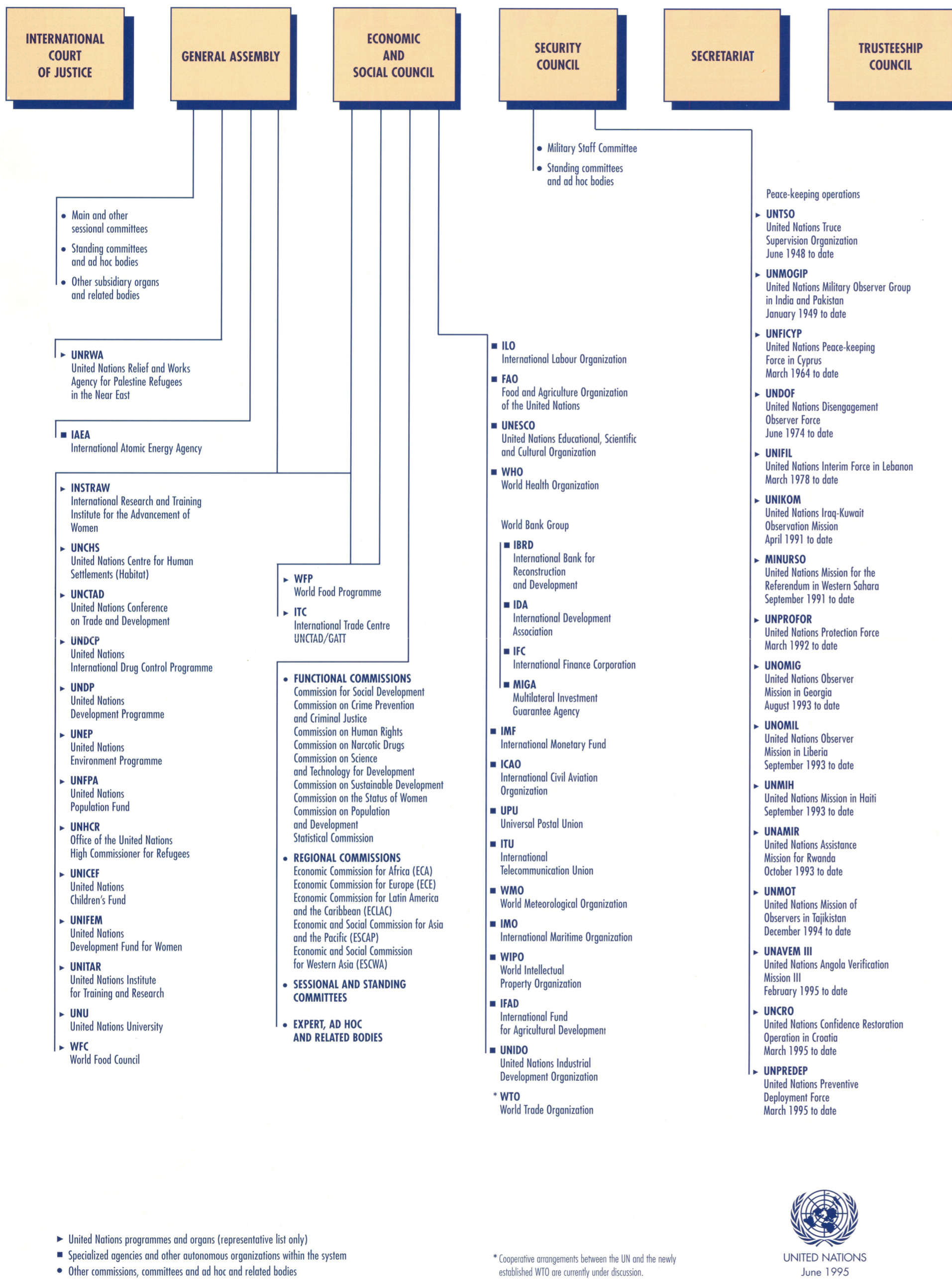
# United Nations Map of the World



School enrolment: ratio of girls to each 100 boys by region



# The United Nations System



# Members of the United Nations

Member State	Date of admission	Scale of assessments (per cent)	Population est. (000)	Member State	Date of admission	Scale of assessments (per cent)	Population est. (000)
Afghanistan	19 November 1946	0.01	17,691	Lesotho	17 October 1966	0.01	1,943
Albania	14 December 1955	0.01	3,389	Liberia	2 November 1945	0.01	2,640
Algeria	8 October 1962	0.16	26,722	Libyan Arab Jamahiriya	14 December 1955	0.21	4,700
Andorra	28 July 1993	0.01	65	Liechtenstein	18 September 1990	0.01	30
Angola	1 December 1976	0.01	10,276	Lithuania	17 September 1991	0.11	3,735
Antigua and Barbuda	11 November 1981	0.01	65	Luxembourg	24 October 1945	0.07	401
Argentina	24 October 1945	0.48	34,180	Madagascar	20 September 1960	0.01	12,092
Armenia	2 March 1992	0.08	3,732	Malawi	1 December 1964	0.01	9,135
Australia	1 November 1945	1.46	17,803	Malaysia	17 September 1957	0.14	19,047
Austria	14 December 1955	0.85	8,015	Maldives	21 September 1965	0.01	238
Azerbaijan	2 March 1992	0.16	7,391	Mali	28 September 1960	0.01	10,135
Bahamas	18 September 1973	0.02	269	Malta	1 December 1964	0.01	366
Bahrain	21 September 1971	0.02	539	Marshall Islands	17 September 1991	0.01	52
Bangladesh	17 September 1974	0.01	115,203	Mauritania	27 October 1961	0.01	2,161
Barbados	9 December 1966	0.01	260	Mauritius	24 April 1968	0.01	1,098
Belarus	2 March 1992	0.37	10,188	Mexico	7 November 1945	0.78	87,341
Belgium	27 December 1945	0.99	10,046	Monaco	28 May 1993	0.01	31
Belize	25 September 1981	0.01	205	Mongolia	27 October 1961	0.01	2,318
Benin	20 September 1960	0.01	5,215	Morocco	12 November 1956	0.03	26,069
Bhutan	21 September 1971	0.01	1,596	Mozambique	16 September 1975	0.01	15,583
Bolivia	14 November 1945	0.01	7,237	Myanmar	19 April 1948	0.01	44,596
Bosnia and Herzegovina	22 May 1992	0.02	3,707	Namibia	23 April 1990	0.01	1,461
Botsswana	17 October 1966	0.01	1,443	Nepal	14 December 1955	0.01	20,812
Brazil	24 October 1945	1.62	153,792	Netherlands	10 December 1945	1.58	15,385
Brunei Darussalam	21 September 1984	0.02	274	New Zealand	24 October 1945	0.24	3,493
Bulgaria	14 December 1955	0.10	8,469	Nicaragua	24 October 1945	0.01	4,401
Burkina Faso	20 September 1960	0.01	9,889	Niger	20 September 1960	0.01	8,361
Burundi	18 September 1962	0.01	5,958	Nigeria	7 October 1960	0.16	105,264
Cambodia	14 December 1955	0.01	9,308	Norway	27 November 1945	0.55	4,331
Cameroon	20 September 1960	0.01	12,522	Oman	7 October 1971	0.04	2,018
Canada	9 November 1945	3.07	29,248	Pakistan	30 September 1947	0.06	122,812
Cape Verde	16 September 1975	0.01	370	Palau	15 December 1994	*	16
Central African Republic	20 September 1960	0.01	3,156	Panama	13 November 1945	0.01	2,583
Chad	20 September 1960	0.01	6,098	Papua New Guinea	10 October 1975	0.01	3,922
Chile	24 October 1945	0.08	14,026	Paraguay	24 October 1945	0.01	4,643
China	24 October 1945	0.72	1,196,360	Peru	31 October 1945	0.06	23,088
Colombia	5 November 1945	0.11	34,520	Philippines	24 October 1945	0.06	65,649
Comoros	12 November 1975	0.01	607	Poland	24 October 1945	0.38	38,554
Congo	20 September 1960	0.01	2,443	Portugal	14 December 1955	0.24	9,868
Costa Rica	2 November 1945	0.01	3,005	Qatar	21 September 1971	0.04	559
Côte d'Ivoire	20 September 1960	0.01	13,316	Republic of Korea	17 September 1991	0.80	44,619
Croatia	22 May 1992	0.10	4,511	Republic of Moldova	2 March 1992	0.11	4,356
Cuba	24 October 1945	0.07	10,941	Romania	14 December 1955	0.15	22,742
Cyprus	20 September 1960	0.03	726	Russian Federation	24 October 1945	5.68	148,366
Czech Republic	19 January 1993	0.32	10,333	Rwanda	18 September 1962	0.01	7,554
Democratic People's Republic of Korea	17 September 1991	0.04	23,048	Saint Kitts and Nevis	23 September 1983	0.01	42
Denmark	24 October 1945	0.70	5,212	Saint Lucia	18 September 1979	0.01	139
Djibouti	20 September 1977	0.01	557	Saint Vincent and the Grenadines	16 September 1980	0.01	110
Dominica	18 December 1978	0.01	71	Samoa	15 December 1976	0.01	163
Dominican Republic	24 October 1945	0.01	7,608	San Marino	2 March 1992	0.01	24
Ecuador	21 December 1945	0.02	11,221	Sao Tome and Principe	16 September 1975	0.01	122
Egypt	24 October 1945	0.07	57,673	Saudi Arabia	24 October 1945	0.80	17,119
El Salvador	24 October 1945	0.01	5,517	Senegal	28 September 1960	0.01	8,152
Equatorial Guinea	12 November 1968	0.01	379	Seychelles	21 September 1976	0.01	72
Eritrea	28 May 1993	0.01	3,345	Sierra Leone	27 September 1961	0.01	4,297
Estonia	17 September 1991	0.05	1,507	Singapore	21 September 1965	0.14	2,930
Ethiopia	13 November 1945	0.01	56,900	Slovak Republic	19 January 1993	0.10	5,353
Federated States of Micronesia	17 September 1991	0.01	105	Slovenia	22 May 1992	0.07	1,988
Fiji	13 October 1970	0.01	771	Solomon Islands	19 September 1978	0.01	355
Finland	14 December 1955	0.61	5,095	Somalia	20 September 1960	0.01	8,954
France	24 October 1945	6.32	57,850	South Africa	7 November 1945	0.34	40,435
Gabon	20 September 1960	0.01	1,012	Spain	14 December 1955	2.24	39,167
Gambia	21 September 1965	0.01	1,026	Sri Lanka	14 December 1955	0.01	17,619
Georgia	31 July 1992	0.16	5,471	Sudan	12 November 1956	0.01	24,941
Germany	18 September 1973	8.94	81,373	Suriname	4 December 1975	0.01	414
Ghana	8 March 1957	0.01	16,446	Swaziland	24 September 1968	0.01	809
Greece	25 October 1945	0.37	10,350	Sweden	19 November 1946	1.22	8,801
Grenada	17 September 1974	0.01	92	Syrian Arab Republic	24 October 1945	0.05	13,844
Guatemala	21 November 1945	0.02	10,322	Tajikistan	2 March 1992	0.03	5,638
Guinea	12 December 1958	0.01	6,306	Thailand	16 December 1946	0.13	58,584
Guinea-Bissau	17 September 1974	0.01	1,028	The Former Yugoslav Republic of Macedonia	8 April 1993	0.01	2,083
Guyana	20 September 1966	0.01	816	Togo	20 September 1960	0.01	3,885
Haiti	24 October 1945	0.01	7,041	Trinidad and Tobago	18 September 1962	0.04	1,260
Honduras	17 December 1945	0.01	5,770	Tunisia	12 November 1956	0.03	8,570
Hungary	14 December 1955	0.01	10,257	Turkey	24 October 1945	0.34	60,227
Iceland	19 November 1946	0.03	263	Turkmenistan	2 March 1992	0.04	3,714
India	30 October 1945	0.31	883,910	Uganda	25 October 1962	0.01	19,940
Indonesia	28 September 1950	0.14	189,136	Ukraine	24 October 1945	1.48	52,000
Iran (Islamic Republic of)	24 October 1945	0.60	60,270	United Arab Emirates	9 December 1971	0.19	1,206
Iraq	21 December 1945	0.14	19,454	United Kingdom of Great Britain and Northern Ireland	24 October 1945	5.27	58,191
Ireland	14 December 1955	0.20	3,571	United Republic of Tanzania	14 December 1961	0.01	28,019
Israel	11 May 1949	0.26	5,423	United States of America	24 October 1945	25.00	258,233
Italy	14 December 1955	4.79	57,110	Uruguay	18 December 1945	0.04	3,149
Jamaica	18 September 1962	0.01	2,411	Uzbekistan	2 March 1992	0.19	21,860
Japan	18 December 1956	13.95	124,536	Vanuatu	15 September 1981	0.01	156
Jordan	14 December 1955	0.01	4,936	Venezuela	15 November 1945	0.40	20,712
Kazakhstan	2 March 1992	0.26	16,925	Viet Nam	20 September 1977	0.01	71,324
Kenya	16 December 1963	0.01	28,113	Yemen	30 September 1947	0.01	12,302
Kuwait	14 May 1963	0.20	1,433	Yugoslavia	24 October 1945	0.11	10,519
Kyrgyzstan	2 March 1992	0.04	4,474	Zaire	20 September 1960	0.01	41,231
Lao People's Democratic Republic	14 December 1955	0.01	4,605	Zambia	1 December 1964	0.01	8,936
Latvia	17 September 1991	0.10	2,536	Zimbabwe	25 August 1980	0.01	10,739
Lebanon	24 October 1945	0.01	2,806				

\* To be determined.