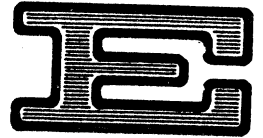




UN ECONOMIC AND SOCIAL COMMISSION
FOR WESTERN ASIA

APR 9 - 1992



LIBRARY + DOCUMENT SECTION

UNITED NATIONS
ECONOMIC AND SOCIAL COUNCIL

Distr.
GENERAL
E/ESCWA/POP/1992/1
15 January 1992
ORIGINAL: ENGLISH

ECONOMIC AND SOCIAL COMMISSION FOR WESTERN ASIA

Social Development and Population Division

POPULATION AND LABOUR FORCE STATISTICS

Series 1

**POPULATION AND LABOUR FORCE DATABASE, IN THE ESCWA REGION:
1957-1987**

Version 1.0

May 1990

ESCWA Documents converted to CDs.

CD # 6

Directory Name:

POP\1992_1

Done by: ProgressSoft Corp., P.O.Box: 802 Amman 11941, Jordan



CONDITIONS OF USE

The present version of the Population and Labour Force Database in the ESCWA region is composed of fifty-one (51) microcomputer files totalling 5MB. The files are contained in four (4) 1.2MB floppy diskettes. This publication presents the concepts, definitions, methodology and a guide to the use of the Database.

The Population and Labour Force Database is copyrighted by the United Nations. Except for back-up and analysis of the statistics, any reproduction by any means, in its original or any altered form, is strictly prohibited without the written permission of the United Nations. Only governments, organizations and individuals receiving copies of the Database directly from the United Nations are considered as authorized users.

Requests for this and future versions of the Database should be directed to the most convenient of the following addresses:

1. Social Development and Population Division
UN-ESCWA
Post Office Box 927115
Amman, Jordan
2. Social Development and Population Division
UN-ESCWA Pouch
P.O. Box 5749
New York, New York 10163-5749
U.S.A.
3. Social Development and Population Division
UN-ESCWA Pouch
Palais des Nations
1211 Geneva 10
Switzerland

ACKNOWLEDGEMENTS

The Commission wishes to acknowledge and express its appreciation to the Arab Employment Institution (AEI) of the Arab Labour Organization (ALO) for its continued collaboration with ESCWA and the national statistical offices of its member states for their generous cooperation in providing their publications.

PREFACE

The Social Development and Population Division of the Economic and Social Commission for Western Asia (ESCWA) is pleased to present the first version of the Population and Labour Force Database in the ESCWA region. It contains a detailed presentation of selected demographic, social and economic characteristics of the labour force of its member states. The Commission hopes that the information will be of valuable assistance to organizations and individuals involved in population, manpower planning and labour market studies and research.

In collaboration with the Arab Employment Institution (AEI) of the Arab Labour Organization (ALO), the Population and Labour Force Database was originally established to include all Arab countries with ESCWA covering its member states and ALO/AEI covering the non-ESCWA countries. Pending completion of data on non-ESCWA countries, ESCWA is confining Version 1.0 to its region. It hopes to incorporate the non-ESCWA countries at a later stage.

This publication consists of a description of the concepts, definitions and methodology used in the data compilation and a description of the computer requirements, installation procedure and retrieval system for the Database.

As this is ESCWA's initial attempt to disseminate labour force statistics through floppy diskettes, it welcomes comments and suggestions for the enhancement of the presentation of future versions.

CONTENTS

	<u>Page</u>
Conditions of use	ii
Acknowledgements	iii
Preface	iv
I. INTRODUCTION	1
<u>Part One</u>	
CONCEPTUAL DESCRIPTION	
II. CONCEPTS, DEFINITIONS AND METHODOLOGY	3
A. Total and economically active population	3
B. Marital status	4
C. Educational attainment	4
D. Employment status	6
E. Occupation	6
F. Industry	7
G. Employment sector	8
<u>Part Two</u>	
TECHNICAL DESCRIPTION	
III. DATABASE RETRIEVAL SYSTEM	10
A. Objective	10
B. Requirements	10
C. Back-up	10
D. Contents of diskettes	11
E. Hard disk installation	12
F. Macro facility	12
G. Process	12
Flow chart for retrieval of Population and Labour Force Statistics	14
<u>Annexes</u>	
I. Data availability by country, year, source of data, nationality, residence and sex	16
II. Coding structure and list of codes	29
III. Abbreviations and symbols used	30

I. INTRODUCTION

A basic requirement for meaningful and effective manpower planning and analysis is comparable and up-to-date statistics on the economically active population. Since the early seventies, the rapid economic and social development in the oil-rich countries of the ESCWA region has brought about a unique labour market phenomenon which has had far-reaching implications to countries within and outside the region. This evolution in the manpower situation heightens the need for a comprehensive collection of labour force statistics as a fundamental tool in manpower analysis and labour market research.

A primary objective of the Commission is to provide accurate and detailed information on the manpower and employment situation in the ESCWA region. The statistics have been compiled from national population and housing censuses, demographic surveys and labour force surveys carried out from 1957 through 1987. The Database is updated on a continuous basis as new information is received by the Commission. Due to special circumstances, Palestine (West Bank and Gaza Strip) is excluded from the present version; it will be included at a later stage. For broader regional comparability, data adjustments have been made, whenever possible, to conform with international standard classifications. However, inconsistencies in data which exist in the source are shown unchanged and noted accordingly.

Social Development and
Population Division
ESCWA

Part One

CONCEPTUAL DESCRIPTION

II. CONCEPTS, DEFINITIONS AND METHODOLOGY

The Database deals primarily with the economically active population with the exception of data on the total population by age group, educational attainment and activity status. Whenever possible, data are compiled at the disaggregated level by sex, urban and rural residence and national and non-national population.

A. Total and economically active population

The total population consists of all persons falling within the coverage of a census. Depending on the method of enumeration adopted, the total may comprise either all usual residents of the country, i.e. the de jure population, or all persons present in the country, i.e. the de facto population, at the time of the census. Although national practices may vary from one country to another or from one census to another for a particular country, experience in the region shows that the majority of the censuses use the de facto enumeration method. Whenever available, the coverage of the population for each census or survey is explicitly described in the Source and Country Notes. Whenever possible, data are shown separately for the national and non-national population. This classification is considered essential for the analysis of the manpower situation in countries whose labour force is composed significantly or predominantly of expatriate workers.

The economically active population comprises all persons of either sex who furnish the supply of labour for the production of economic goods and services during a specified time-reference period chosen for the investigation.^{1/} While the definition refers to civilians and military personnel, national practices in the region differ in the treatment of the armed forces. Members of the armed forces may be enumerated as part of their household and treated as civilians in one enumeration while another may treat them as a separate category. When the latter method is applied, the tables are noted accordingly.

As to the time-reference period, differences between countries - and even within a country - exist in the measurement of the economically active population. The term 'usually active population' is based on a long reference period such as a year while the 'currently active population' is derived on the basis of a much shorter reference period such as one day or one week. Except for a few cases, censuses and surveys in the region are based on the "current activity" approach. When provided by the source, the reference period for each census or survey is stated in the Source and Country Notes.

^{1/} Principles and Recommendations for Population and Housing Censuses, Statistical Papers, Series M, No. 67 (United Nations publication, Sales No. E.80.XVII.8), Part Two, sect. V.C.6, p. 93 (hereinafter referred to as "Principles and Recommendations").

The economically active population comprises persons employed and those unemployed during the time-reference period.^{1/} Unless otherwise indicated in the Source and Country Notes or Table Notes, the minimum-age limit of 10 years has been set to allow for broader comparability.

All other persons who do not meet the definition of the economically active such as homemakers, students, income recipients, retired persons and others are considered economically inactive. However, in instances where a person is classifiable in both categories, priority is given to his or her status as economically active. Thus, retired persons, housewives and students who are seeking employment or are employed on a part-time basis are treated as economically active.

B. Marital status

Persons are classified according to each country's marriage laws and customs as follows: (a) single (never married), (b) married, (c) divorced and (d) widowed. Deviations that result from varying social customs and legal practices among countries are explained in the Table Notes.

C. Educational attainment

Educational attainment is defined as the highest grade or level completed within the educational system of the country where the education was received. Although the pattern and structure of national educational systems vary from one country to another, it is evident that a universal pattern nevertheless exists in the duration, timing and subject matter covered.

Taking into consideration that a common global pattern exists among national educational systems in the region, an attempt has been made to standardize the data to parallel the one-digit level categories of the International Standard Classification of Education (ISCED) by the United Nations Educational, Scientific and Cultural Organization (UNESCO).^{2/} The measurement of educational attainment for the younger segment of the population is considered irrelevant in relation to manpower analysis; therefore, compilation of the data is confined to persons 10 years old and over. Any deviations from this minimum-age limit are footnoted accordingly.

To facilitate regional comparison, the data are classified as follows:

1. Illiterate - includes persons who cannot, with understanding, both read and write a short, simple sentence on his or her everyday life;^{3/}

^{1/} For the precise definition of employed and unemployed, see Principles and Recommendations, Part Two, sect. V.C.6, p. 93.

^{2/} UNESCO document ED/BIE/CONFINTED.35/REF.8, Abridged Edition. (Paris, July 1975).

^{3/} United Nations Educational, Scientific and Cultural Organization, "Recommendations concerning the International Standardization of Educational Statistics", adopted by the General Conference at its tenth session, Paris, 3 December 1958, p. 4.

2. Read and write - includes persons, with or without any formal education, who can, with understanding, both read and write a short, simple sentence on his or her everyday life, as well as those with some formal education who have not obtained a primary certificate;

3. Primary - includes persons who have completed education at the first level (ISCED category 1), which usually begins between the ages of 5 and 7 and lasts for about 5 years;

4. Intermediate - includes persons who have completed education at the second level, first stage (ISCED category 2), which begins at about age 10-12 and lasts for about 3 years;

5. Secondary - includes persons who have completed education at the second level, second stage (ISCED category 3), which begins at about age 13-15 and lasts for about 4 years; and

6. University and above - includes persons who have completed education as follows:

(a) At the third level, first stage, of the type that leads to an award not equivalent to a first university degree (ISCED category 5);

(b) At the third level, first stage, of the type that leads to a first university degree (ISCED category 6); and

(c) At the third level, second stage, of the type that leads to a postgraduate university degree or equivalent (ISCED category 7).

Education at the third level usually begins at about age 17-19 and lasts for at least 2 or 4 years or longer, depending on the stage.

The ISCED has been designed to cover the regular school and university system (core programmes) and adult education (non-core programmes). In some countries in the region, the regular school and university system is divided into two parallel groups: (1) classical (or regular) system and (2) vocational/technical system. As stipulated in the ISCED, consistency is achieved by using minimum prior education as the basis for classification.

Compilation of statistics in the ESCWA region shows an overall consistency in the classification of educational attainment. However, due to the absence of a detailed description of the national educational systems, standardization was hampered for persons categorized as having vocational or technical diplomas and certificates. When clearly stated in the source and in accordance with ISCED category 5, persons with certificates above the secondary level but below the first university degree are included with University and Above. Otherwise, data using terms or designations of the country's educational system are classified based on their position within the normal progression of the school system. To allow flexibility in the treatment of data, footnotes are used to state the differing national terminologies and, whenever available, their corresponding composition.

D. Employment status

The international definition of employment status is "the status of an economically active individual with respect to his or her employment, that is, whether he or she is (or was, if unemployed) an employer, own-account worker, employee, unpaid family worker or a member of a producers' cooperative".^{1/} The classification of members of producers' cooperatives is not shown separately as it is not commonly used in the countries of the region.

The classification by employment status is as follows:

1. Employers - includes persons who operate their own economic enterprise or engage independently in a profession or trade, and hire one or more employees;

2. Own-account workers - includes persons who operate their own economic enterprise or engage independently in a profession or trade, and hire no employees;

3. Employees - includes persons who work for a public or private employer and receive remuneration in wages, salary, commission, tips, piece-rates or pay in kind; and

4. Unpaid workers - includes persons who work a specified minimum amount of time (at least one third of the normal working hours), without pay, in economic enterprises operated by a related person as well as those, such as unpaid apprentices, who work without pay in enterprises operated by an unrelated person.

Persons whose status is unknown and, when shown in the tabulation, persons seeking employment for the first time are included in the Not Stated category.

In general, data supplied by most countries conform with international classifications as set out above. Nevertheless, experience in the compilation shows that differences exist in the treatment of employees paid in kind and unemployed persons who were previously employed. Although classified as employees by definition, employees paid in kind are, in a few cases, included with Unpaid Workers. For the classification of unemployed persons who were employed before, it is a common regional practice to classify them on the basis of their previous employment experience. In some cases however, only those persons who were employed during the reference period were classified by status. Any particular characteristics which deviate from the standard are explained in the Table Notes.

E. Occupation

Occupation is defined as the type of work done during the reference period by an economically active individual, irrespective of the industry in which the work was performed. As it has been widely adopted by the countries

^{1/} Principles and Recommendations, Part Two, sect. V.C.6, p. 96.

in the region, data are classified by major and minor occupational group in accordance with the International Standard Classification of Occupations (ISCO).^{1/}

Despite the general usage of the 1968 edition of the ISCO, divergences in classification by occupation exist. Undefined terminologies such as "occupations ever held", "workers not occupied" and "workers not reporting any occupation", used mainly in earlier censuses and surveys, hamper data comparability. Censuses and surveys undertaken prior to the adoption of the 1968 ISCO used the 1958 edition as the basis of their classification. Among others, the 1968 ISCO reflects the reclassification of the various types of administrative and managerial workers and transport and communications workers. When minor occupational groups under the 1958 ISCO are available, data are reclassified to conform with the revised ISCO. Otherwise, data are footnoted to point out the difference in classification. Differences also occur in the treatment of unemployed persons who were previously employed. According to international recommendations, these persons should be appropriately classified based on their last employment activity. The majority of the countries have supplied data in compliance with this recommendation. Those which classified only the employed population and included the unemployed in the Not Stated category are noted in the Table Notes. Persons seeking employment for the first time are either excluded from the tabulation or included in the Not Stated category. National practices also vary in the treatment of members of the armed forces. While most countries in the region consider them as members of their respective households, others treat the armed forces as a separate occupational category irrespective of the various specific occupations of military personnel. In this case, they are included in the Not Stated category with their composition, when available, stated in the Table Notes.

F. Industry

Industry is defined as the economic activity of the establishment where the work was performed by an economically active individual during the reference period. For unemployed persons who were previously employed, classification is based on the last activity. For comparability purposes, data are classified according to the 1968 edition of the International Standard Industrial Classification of All Economic Activities (ISIC).^{2/} As most countries in the region adopted the 1968 revision of ISIC, classification by industry is straightforward for censuses and surveys carried out since then.

^{1/} International Labour Office, International Standard Classification of Occupations, Revised Edition, 1968 (Geneva, 1969).

^{2/} International Standard Industrial Classification of All Economic Activities (ISIC), Statistical Papers, Series M, No. 4, Rev.2 (United Nations publication, Sales No. E.68.XVII.8).

One source of variation in the data is the use of the 1958 edition of ISIC^{1/} for censuses and surveys undertaken prior to 1968. The major difference between the 1958 and 1968 editions is the reclassification of sanitary and related services, restaurants and hotels and business services. Whenever available at the industrial division level for the earlier censuses and surveys, data are reclassified to conform with the 1968 ISIC. Otherwise, data are presented unchanged and noted to show that classification is based on the 1958 edition. The treatment of persons who joined the labour force for the first time also causes variation in the data. Notes are used to state the inclusion or exclusion of these persons from the data.

G. Employment Sector

Employment sector is defined as the sector of the economy in which an economically active individual works. For unemployed persons who worked before, classification is based on the last employment experience.

No regional or interregional recommendations exist in the classification by sector of the economically active population. Experience in the ESCWA region shows that distinction is made primarily between employment in the public and private sectors.

Employment sector is classified as follows:

1. Public - includes persons employed in the central and local governments and in publicly owned and controlled enterprises;
2. Private - includes persons employed in privately owned and controlled enterprises; and
3. Other - includes persons employed in semi-governmental enterprises, foreign-owned companies, regional and international organizations and cooperatives.

1/ Ibid., Rev.1 (United Nations publication, Sales No. E.58.XVII.1.7).

Part Two

TECHNICAL DESCRIPTION

III. DATABASE RETRIEVAL SYSTEM

A. Objective

The main objective of the retrieval system is to facilitate access to the various labour force statistics. This first version is designed and organized to retrieve, with great ease, a specific set of data along with all relevant information necessary in the interpretation of the data. The system has been developed to be as "user-friendly" as possible. Therefore, the retrieval and storage of any particular set of statistics are executed with a few and simple commands.

ESCWA hopes that this initial venture will serve as a cornerstone to the development of a more reliable and comprehensive manpower and employment information system for all Arab countries.

B. Requirements

The Population and Labour Force Database Retrieval System has been developed for use with IBM or IBM-compatible personal computers (PCs) with the following specifications:

1. Minimum of 512KB of memory;
2. 5MB of hard disk space;
3. At least 1 floppy disk drive;
4. MS-DOS*, version 2.0 or higher; and
5. Lotus 1-2-3 spreadsheet software*, version 2.0 or higher.

C. Back-up

The contents of the diskettes are unprotected. Therefore, as a precautionary measure, it is recommended that back-ups are created for all original diskettes prior to the use of the system. Four (4) blank, 1.2MB, formatted diskettes are initially required to back-up the original diskettes.

To do the back-up, insert an original diskette in disk drive A.

Type

```
copy a:*. *b:
```

to copy contents of the original into a blank, formatted diskette. Upon successful completion of the above, repeat the procedure as required to back up the remaining original diskettes. It is advisable to label each copy immediately after its creation.

* IBM is a registered trademark of International Business Machines, Inc. MS-DOS is a registered trademark of Microsoft Corporation. Lotus 1-2-3 is a registered trademark of Lotus Development Corporation.

D. Contents of diskettes

The contents of the four original diskettes are as follows:

LFORCE DISK_1:

LFSTALL.bat -installation program
HEADING.wkl -headings for tables
LFORCE.wkl -logo
MAIN.wkl -menus for data retrieval
N_01.wkl -explanatory notes to T_01.wkl
N_02.wkl -explanatory notes to T_02.wkl
N_03.wkl -explanatory notes to T_03.wkl
N_04.wkl -explanatory notes to T_04.wkl
N_05.wkl -explanatory notes to T_05.wkl
N_06.wkl -explanatory notes to T_06.wkl
N_07.wkl -explanatory notes to T_07.wkl
N_08.wkl -explanatory notes to T_08.wkl
N_09.wkl -explanatory notes to T_09.wkl
N_10.wkl -explanatory notes to T_10.wkl
N_11.wkl -explanatory notes to T_11.wkl
N_12.wkl -explanatory notes to T_12.wkl
N_13.wkl -explanatory notes to T_13.wkl
N_14.wkl -explanatory notes to T_14.wkl
N_15.wkl -explanatory notes to T_15.wkl
N_16.wkl -explanatory notes to T_16.wkl
N_17.wkl -explanatory notes to T_17.wkl
N_18.wkl -explanatory notes to T_18.wkl
N_19.wkl -explanatory notes to T_19.wkl
N_20.wkl -explanatory notes to T_20.wkl
N_21.wkl -explanatory notes to T_21.wkl
N_22.wkl -explanatory notes to T_22.wkl
PROCED.wkl -program to execute system request
S_C_NOTE.wkl-sources and country notes

LFORCE DISK_2:

LFSTALL.bat -installation program
T_01.wkl -Population by age group
T_02.wkl -Population by educational attainment
T_03.wkl -Population by activity status and age group
T_04.wkl -E.A.P. by marital status
T_05.wkl -E.A.P. by educational attainment
T_06.wkl -E.A.P. by employment status
T_07.wkl -E.A.P. by employment status and age group
T_08.wkl -E.A.P. by employment status and educational attainment
T_09.wkl -E.A.P. by major occupational group

LFORCE DISK_3:

T_10.wkl -E.A.P. by major occupational group and age group
T_11.wkl -E.A.P. by minor occupational group

LFORCE DISK_3: (continued)

T_12.wkl	-E.A.P. by major occupational group and educational attainment
T_13.wkl	-E.A.P. by major occupational group and employment status
T_14.wkl	-E.A.P. by major industrial division
T_16.wkl	-E.A.P. by industrial division
T_20.wkl	-E.A.P. by employment sector
T_21.wkl	-Unemployed population by educational attainment
T_22.wkl	-Unemployed population by unemployment status

LFORCE DISK_4:

T_15.wkl	-E.A.P. by major industrial division and age group
T_17.wkl	-E.A.P. by major industrial division and educational attainment
T_18.wkl	-E.A.P. by major industrial division and employment status
T_19.wkl	-E.A.P. by major industrial division and major occupational group

E. Hard disk installation

The installation procedure involves the creation of a main directory called LFORCE and two sub-directories named LFDATA and LFOUT. The contents of the original diskettes are copied into LFDATA. All output files created through the retrieval system are automatically routed to LFOUT.

To install the system, follow the steps given below:

1. Insert the diskette labelled LFORCE DISK_1 in disk drive A;
2. Type c:>a: <enter>; and
3. Type a>LFSTALL <enter>.

From this point and onward, simply follow the on-screen instructions for the installation of the remaining diskettes.

F. Macro facility

The macro-facilities of Lotus are used extensively in the retrieval system. This enables the swift execution of the various tasks involved in the creation of the output files. However, the user needs only to be concerned with the "Alt E" and "Alt M" commands. When any of these two commands is required, the Alt key should be pressed simultaneously with the E or M key, without releasing the Alt key.

G. Process

To facilitate data retrieval and manipulation, the contents of the Database were converted from dBase III+ and reformatted into Lotus 1-2-3. The flow chart on page 16 illustrates how the retrieval system works. The only input required is the choices made by the user in each of three menus in file MAIN.wkl.

To use the system, proceed to the directory containing the Lotus 1-2-3 program. Type 123 and press Enter. Using Lotus commands (/FR), retrieve LFORCE.wkl from C:\LFORCE\LFDATA directory. This brings up the logo which is displayed for 5-10 seconds.

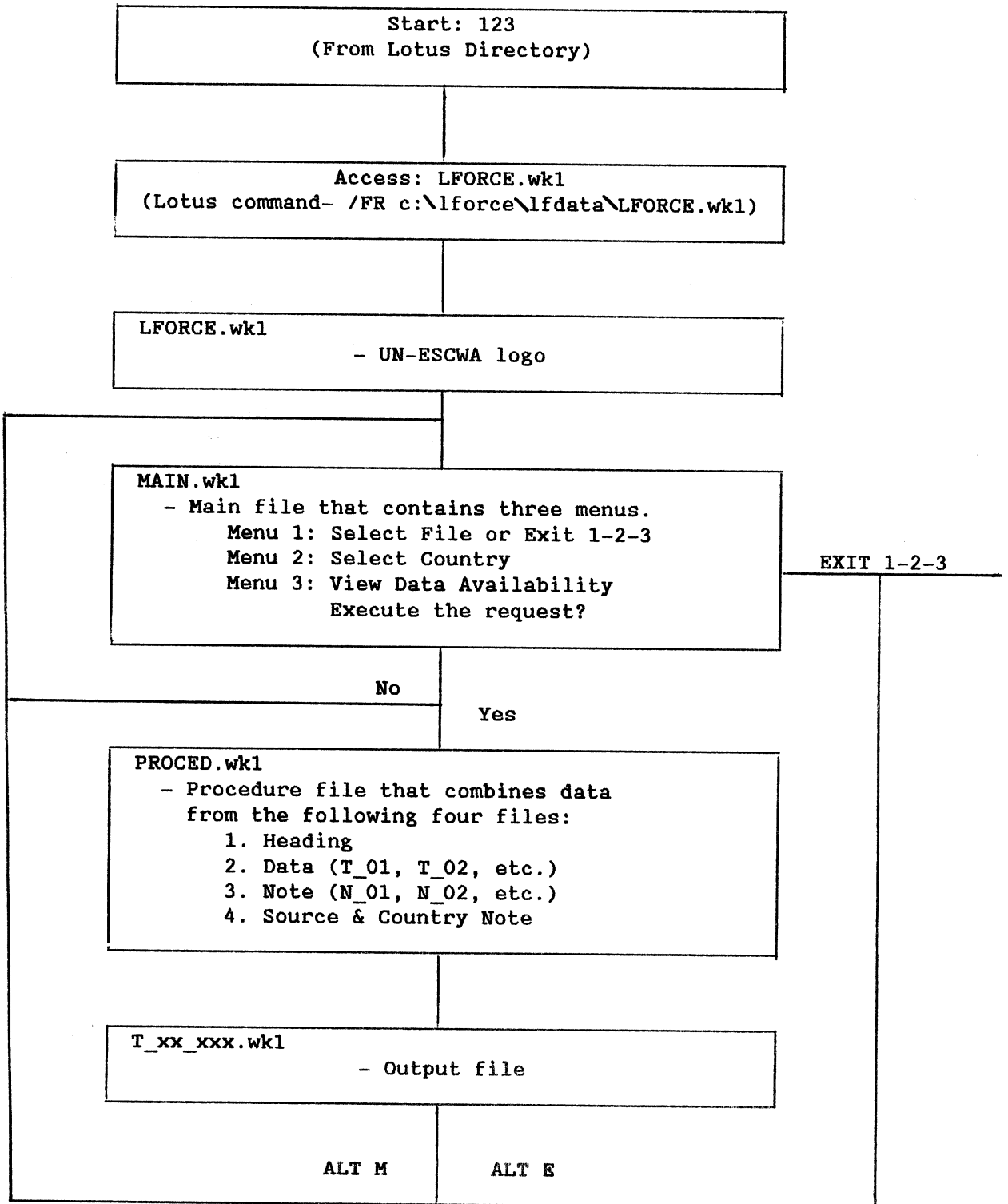
It is then immediately followed by MAIN.wkl file which consists of three menus. The menus are displayed consecutively after a selection is made from each one. The first menu presents the complete list of data files. The second menu displays only the countries for which the data file exists. In this version, access is limited to one country per request. The third menu then displays the years for which data are available for the specified data file and country. At this stage, the user is given the choice to execute the request or return to the first menu.

The file PROCED.wkl begins the execution of the request. The macro-facilities are invoked to combine the appropriate heading, data, table notes and source and country notes to a temporary location in PROCED.wkl. The result is extracted to an output file and then retrieved as the current worksheet.

Each output file is automatically stored to the LFOUT sub-directory. It is labelled with a standard table number (see part D of this section) and the 3-digit alpha country code (see Annex II). From the output file, use the "Alt M" key to return to the first menu or the "Alt E" key to exit the system.

To print output files, use the Lotus 1-2-3 print commands.

FLOW CHART FOR RETRIEVAL OF POPULATION
AND LABOUR FORCE STATISTICS



Note: No user input is required in shaded boxes.

ANNEXES

Annex I. Data availability by country, year, source of data, nationality, residence and sex

BAHRAIN

Table	Title	1965(c)	1971(c)	1981(c)
<u>Population</u>				
01	By Age Group & Sex	A	A	A
02	By Educational Attainment & Sex	A	A	A
03	By Activity Status, Age Group & Sex		A	A
<u>Economically Active Population</u>				
04	By Marital Status & Sex			A
05	By Educational Attainment & Sex	A		A
06	By Employment Status & Sex	A	A	A
07	By Employment Status, Age Group & Sex		A	A
08	By Employment Status, Educational Attainment & Sex			A
09	By Major Occupational Group & Sex	A	A	A
10	By Major Occupational Group, Age Group & Sex			
11	By Minor Occupational Group & Sex	A	A	A
12	By Major Occupational Group, Educational Attainment & Sex	A		A,G
13	By Major Occupational Group, Employment Status & Sex	A	A	A,G
14	By Major Industrial Division & Sex	A	A	A
15	By Major Industrial Division, Age Group & Sex			
16	By Industrial Division & Sex		A	A
17	By Major Industrial Division, Educational Attainment & Sex	A		A,G
18	By Major Industrial Division, Employment Status & Sex	A	A	A
19	By Major Industrial Division, Major Occupational Group & Sex		A	A,G
20	By Employment Sector & Sex			A
<u>Unemployed</u>				
21	By Educational Attainment & Sex			A
22	By Unemployment Status & Sex		A	

DEMOCRATIC YEMEN

Table	Title	1973(c)
<u>Population</u>		
01	By Age Group & Sex	B
02	By Educational Attainment & Sex	
03	By Activity Status, Age Group & Sex	
<u>Economically Active Population</u>		
04	By Marital Status & Sex	
05	By Educational Attainment & Sex	
06	By Employment Status & Sex	B,F
07	By Employment Status, Age Group & Sex	
08	By Employment Status, Educational Attainment & Sex	
09	By Major Occupational Group & Sex	
10	By Major Occupational Group, Age Group & Sex	
11	By Minor Occupational Group & Sex	
12	By Major Occupational Group, Educational Attainment & Sex	
13	By Major Occupational Group, Employment Status & Sex	
14	By Major Industrial Division & Sex	B,F
15	By Major Industrial Division, Age Group & Sex	
16	By Industrial Division & Sex	
17	By Major Industrial Division, Educational Attainment & Sex	
18	By Major Industrial Division, Employment Status & Sex	
19	By Major Industrial Division, Major Occupational Group & Sex	
20	By Employment Sector & Sex	
<u>Unemployed</u>		
21	By Educational Attainment & Sex	
22	By Unemployment Status & Sex	

EGYPT

Table Title 1960(c) 1966(c) 1976(c) 1982(s) 1984(s) 1986(c)

		1960(c)	1966(c)	1976(c)	1982(s)	1984(s)	1986(c)
<u>Population</u>							
01	By Age Group & Sex	C,F	B,F	C,F			C,F
02	By Educational Attainment & Sex	C,F	B,F	C,F			C,F
03	By Activity Status, Age Group & Sex	D	B,F	D			D,F
<u>Economically Active Population</u>							
04	By Marital Status & Sex	D		D			
05	By Educational Attainment & Sex	D	B,F	D	B,F	B,F	
06	By Employment Status & Sex	C	B,F	C,F	B,F	B,F	C,F
07	By Employment Status, Age Group & Sex	D	B,F	D			D,F
08	By Employment Status, Educational Attainment & Sex	D		D			
09	By Major Occupational Group & Sex	C	B,F	C,F	B,F	B,F	C,F
10	By Major Occupational Group, Age Group & Sex	D	B,F,G	D			D,F
11	By Minor Occupational Group & Sex	C	B,F	D			
12	By Major Occupational Group, Educational Attainment & Sex	D		D			
13	By Major Occupational Group, Employment Status & Sex	D	B,F	D			
14	By Major Industrial Division & Sex	C	B,F	C,F	B,F	B,F	C,F
15	By Major Industrial Division, Age Group & Sex	D	B,F	D			D,F
16	By Industrial Division & Sex	C	B,F	D			
17	By Major Industrial Division, Educational Attainment & Sex	D	B,F	D			
18	By Major Industrial Division, Employment Status & Sex	D	B,F	D			
19	By Major Industrial Division, Major Occupational Group & Sex	D	B,F	D	B,F	B,F	B,F
20	By Employment Sector & Sex	D	B,F	D	B,F	B,F	B,F
<u>Unemployed</u>							
21	By Educational Attainment & Sex	D		D			
22	By Unemployment Status & Sex	D		D	B,F	B,F	C,F

IRAQ

Table	Title	1957(c)	1977(c)	1987(c)
<u>Population</u>				
01	By Age Group & Sex	B	B,F	B,F
02	By Educational Attainment & Sex	B	B,F	D,F
03	By Activity Status, Age Group & Sex		B,F	B,F
<u>Economically Active Population</u>				
04	By Marital Status & Sex			
05	By Educational Attainment & Sex	B	B,F	B,F
06	By Employment Status & Sex			B,F
07	By Employment Status, Age Group & Sex			B,F
08	By Employment Status, Educational Attainment & Sex			
09	By Major Occupational Group & Sex	B	B,F	B,F
10	By Major Occupational Group, Age Group & Sex			B,F
11	By Minor Occupational Group & Sex			
12	By Major Occupational Group, Educational Attainment & Sex			B,F
13	By Major Occupational Group, Employment Status & Sex			B,F
14	By Major Industrial Division & Sex	B	B,F	B,F
15	By Major Industrial Division, Age Group & Sex		B,F	B,F
16	By Industrial Division & Sex			
17	By Major Industrial Division, Educational Attainment & Sex	B		B,F
18	By Major Industrial Division, Employment Status & Sex			B,F
19	By Major Industrial Division, Major Occupational Group & Sex	B	B,F	
20	By Employment Sector & Sex			
<u>Unemployed</u>				
21	By Educational Attainment & Sex			B,F
22	By Unemployment Status & Sex		B,F	B,F

JORDAN

Table	Title	1961(c)	1979(c)	1983(s)	1987(s)
<u>Population</u>					
01	By Age Group & Sex	B	A,F	B,F	B,F
02	By Educational Attainment & Sex	B	A,F	B,F	B,F
03	By Activity Status, Age Group & Sex	B	A,F	B,F	B,F
<u>Economically Active Population</u>					
04	By Marital Status & Sex			B,F	B
05	By Educational Attainment & Sex		A	B,F	B
06	By Employment Status & Sex	B	A,F	B,F	B
07	By Employment Status, Age Group & Sex		A,F	B,F	
08	By Employment Status, Educational Attainment & Sex			B,F	
09	By Major Occupational Group & Sex	B	A	B,F	B
10	By Major Occupational Group, Age Group & Sex		A	B,F	B
11	By Minor Occupational Group & Sex	B	A		
12	By Major Occupational Group, Educational Attainment & Sex		A	B,F	B
13	By Major Occupational Group, Employment Status & Sex		A	B,F	
14	By Major Industrial Division & Sex	B	A	B,F	B
15	By Major Industrial Division, Age Group & Sex		A	B,F	
16	By Industrial Division & Sex		A		
17	By Major Industrial Division, Educational Attainment & Sex		A	B,F	
18	By Major Industrial Division, Employment Status & Sex	B	A	B,F	
19	By Major Industrial Division, Major Occupational Group & Sex		A	B,F	B
20	By Employment Sector & Sex		A,F		B,F
<u>Unemployed</u>					
21	By Educational Attainment & Sex		A,F	B,F	B
22	By Unemployment Status & Sex	B	A,F	B,F	B

KUWAIT

Table	Title	1957(c)	1965(c)	1970(c)	1975(c)	1980(c)	1985(c)
<u>Population</u>							
01	By Age Group & Sex	A	A	A	A	A	A
02	By Educational Attainment & Sex	A	A	A	A	A	A
03	By Activity Status, Age Group & Sex	A	A	A	A	A	A
<u>Economically Active Population</u>							
04	By Marital Status & Sex	A	A	A	A	A	A
05	By Educational Attainment & Sex	A	A	A	A	A	A
06	By Employment Status & Sex	A	A	A	A	A	A
07	By Employment Status, Age Group & Sex	A	A	A	A	A	A
08	By Employment Status, Educational Attainment & Sex	A	A	A	A	A	A
09	By Major Occupational Group & Sex	A	A	A	A	A	A
10	By Major Occupational Group, Age Group & Sex	A	A	A	A	A	A
11	By Minor Occupational Group & Sex	A	A	A	A	A	A
12	By Major Occupational Group, Educational Attainment & Sex	E	A	A	A	A	A
13	By Major Occupational Group, Employment Status & Sex	A	A	A	A	A	A
14	By Major Industrial Division & Sex	A	A	A	A	A	A
15	By Major Industrial Division, Age Group & Sex	A	A	A	A	A	A
16	By Industrial Division & Sex	A	A	A	A	A	A
17	By Major Industrial Division, Educational Attainment & Sex	A	A	A	A	A	A
18	By Major Industrial Division, Employment Status & Sex	A	A	A	A	A	A
19	By Major Industrial Division, Major Occupational Group & Sex	A	A	A	A	A,G	A
20	By Employment Sector & Sex	A	A	A	A	A	A
<u>Unemployed</u>							
21	By Educational Attainment & Sex	A	A	A	A	A	A
22	By Unemployment Status & Sex	A	A	A	A	A	A

LEBANON

Table	Title	1970(s)
<u>Population</u>		
01	By Age Group & Sex	
02	By Educational Attainment & Sex	B
03	By Activity Status, Age Group & Sex	
<u>Economically Active Population</u>		
04	By Marital Status & Sex	
05	By Educational Attainment & Sex	
06	By Employment Status & Sex	
07	By Employment Status, Age Group & Sex	
08	By Employment Status, Educational Attainment & Sex	
09	By Major Occupational Group & Sex	B
10	By Major Occupational Group, Age Group & Sex	
11	By Minor Occupational Group & Sex	
12	By Major Occupational Group, Educational Attainment & Sex	B,G
13	By Major Occupational Group, Employment Status & Sex	
14	By Major Industrial Division & Sex	
15	By Major Industrial Division, Age Group & Sex	
16	By Industrial Division & Sex	
17	By Major Industrial Division, Educational Attainment & Sex	
18	By Major Industrial Division, Employment Status & Sex	B,G
19	By Major Industrial Division, Major Occupational Group & Sex	
20	By Employment Sector & Sex	
<u>Unemployed</u>		
21	By Educational Attainment & Sex	B,G
22	By Unemployment Status & Sex	B,G

QATAR

Table	Title	1970(c)	1986(c)
<u>Population</u>			
01	By Age Group & Sex	A	B
02	By Educational Attainment & Sex		B
03	By Activity Status, Age Group & Sex		B
<u>Economically Active Population</u>			
04	By Marital Status & Sex		B
05	By Educational Attainment & Sex		B
06	By Employment Status & Sex	A	B
07	By Employment Status, Age Group & Sex		
08	By Employment Status, Educational Attainment & Sex		
09	By Major Occupational Group & Sex	A	B
10	By Major Occupational Group, Age Group & Sex		B
11	By Minor Occupational Group & Sex	A	B
12	By Major Occupational Group, Educational Attainment & Sex	B	B
13	By Major Occupational Group, Employment Status & Sex	B,G	B
14	By Major Industrial Division & Sex	B	B
15	By Major Industrial Division, Age Group & Sex		B
16	By Industrial Division & Sex		B
17	By Major Industrial Division, Educational Attainment & Sex	B,G	B
18	By Major Industrial Division, Employment Status & Sex		B
19	By Major Industrial Division, Major Occupational Group & Sex	B,G	B
20	By Employment Sector & Sex		B
<u>Unemployed</u>			
21	By Educational Attainment & Sex		B
22	By Unemployment Status & Sex		B

SAUDI ARABIA

Table	Title	1974(c)	1977(s)	1981(s)	1986(s)	1987(s)
<u>Population</u>						
01	By Age Group & Sex	A				
02	By Educational Attainment & Sex	A	B	A	A	A
03	By Activity Status, Age Group & Sex	B	B	E	A	A
<u>Economically Active Population</u>						
04	By Marital Status & Sex		B	E	A	A
05	By Educational Attainment & Sex		B	A	A	A
06	By Employment Status & Sex	A				
07	By Employment Status, Age Group & Sex					
08	By Employment Status, Educational Attainment & Sex					
09	By Major Occupational Group & Sex	A	B,G	A	A	A
10	By Major Occupational Group, Age Group & Sex			A	A	A
11	By Minor Occupational Group & Sex			A		
12	By Major Occupational Group, Educational Attainment & Sex				A	A
13	By Major Occupational Group, Employment Status & Sex					
14	By Major Industrial Division & Sex	A	B,G		A	A
15	By Major Industrial Division, Age Group & Sex				A	A
16	By Industrial Division & Sex					
17	By Major Industrial Division, Educational Attainment & Sex				A	A
18	By Major Industrial Division, Employment Status & Sex					
19	By Major Industrial Division, Major Occupational Group & Sex				A	A
20	By Employment Sector & Sex					
<u>Unemployed</u>						
21	By Educational Attainment & Sex					
22	By Unemployment Status & Sex	A				

SYRIAN ARAB REPUBLIC

Table	Title	1960(c)	1970(c)	1975(s)	1976(s)	1981(c)	1983(s)
<u>Population</u>							
01	By Age Group & Sex	C, F	A, F	B, F	B, F	A	B, F
02	By Educational Attainment & Sex	C, F	A, F	B, F	B, F	A	B, F
03	By Activity Status, Age Group & Sex	D	D, F	B, F		D	B, F
<u>Economically Active Population</u>							
04	By Marital Status & Sex	D	D, F	B, F		D	B, F
05	By Educational Attainment & Sex	D	D, F	B, F		D	B, F
06	By Employment Status & Sex	C, F	A, F	B, F	B, F	A	B, F
07	By Employment Status, Age Group & Sex	D	D, F			D	
08	By Employment Status, Educational Attainment & Sex	D				D	
09	By Major Occupational Group & Sex	C, F	A, F	B, F	B, F	A	B, F
10	By Major Occupational Group, Age Group & Sex	D	D, F			D	
11	By Minor Occupational Group & Sex	C	A, F			A	
12	By Major Occupational Group, Educational Attainment & Sex	D	D, F			D	
13	By Major Occupational Group, Employment Status & Sex	D	D, F			D	
14	By Major Industrial Division & Sex	C, F	A, F	B, F	B, F	A	B, F
15	By Major Industrial Division, Age Group & Sex	D	D, F			D	
16	By Industrial Division & Sex	C	A, F			A	
17	By Major Industrial Division, Educational Attainment & Sex	D	D, F			D	
18	By Major Industrial Division, Employment Status & Sex	D	D, F	B, G		D	
19	By Major Industrial Division, Major Occupational Group & Sex	D	D, F			D	
20	By Employment Sector & Sex	D	D, F			D	
<u>Unemployed</u>							
21	By Educational Attainment & Sex	D	D, F	B, F		D	B, F
22	By Unemployment Status & Sex	D	D, F	B, F	B, F	D	B, F

UNITED ARAB EMIRATES

Table	Title	1975(c)	1980(c)	1985(c)
<u>Population</u>				
01	By Age Group & Sex	A	A	
02	By Educational Attainment & Sex	A	A	B
03	By Activity Status, Age Group & Sex	A	A	B
<u>Economically Active Population</u>				
04	By Marital Status & Sex	A	A	
05	By Educational Attainment & Sex	A	A	B
06	By Employment Status & Sex	A	A	B
07	By Employment Status, Age Group & Sex	A	A	B
08	By Employment Status, Educational Attainment & Sex		A	B
09	By Major Occupational Group & Sex	A	A	B
10	By Major Occupational Group, Age Group & Sex	A	A	B
11	By Minor Occupational Group & Sex	A	A	
12	By Major Occupational Group, Educational Attainment & Sex	A	A	
13	By Major Occupational Group, Employment Status & Sex	A	A	B
14	By Major Industrial Division & Sex	A	A	B
15	By Major Industrial Division, Age Group & Sex	A	A	B
16	By Industrial Division & Sex	A	A	
17	By Major Industrial Division, Educational Attainment & Sex	A	A	
18	By Major Industrial Division, Employment Status & Sex	A	A	B
19	By Major Industrial Division, Major Occupational Group & Sex	A	A	
20	By Employment Sector & Sex		A	B
<u>Unemployed</u>				
21	By Educational Attainment & Sex	A	A	B
22	By Unemployment Status & Sex	A	A	B

YEMEN

Table	Title	1975(c)	1982(s)	1986(c)
<u>Population</u>				
01	By Age Group & Sex	B	B,F	B,F
02	By Educational Attainment & Sex	B	B,F	B,F
03	By Activity Status, Age Group & Sex	B		B,F
<u>Economically Active Population</u>				
04	By Marital Status & Sex	B,G		
05	By Educational Attainment & Sex	B,G		B,F
06	By Employment Status & Sex	B,G	B,F	B,F
07	By Employment Status, Age Group & Sex			
08	By Employment Status, Educational Attainment & Sex			
09	By Major Occupational Group & Sex	B,G	B,F	B,F
10	By Major Occupational Group, Age Group & Sex			
11	By Minor Occupational Group & Sex			
12	By Major Occupational Group, Educational Attainment & Sex	B,G		
13	By Major Occupational Group, Employment Status & Sex	B,G		
14	By Major Industrial Division & Sex	B,G	B,F	B,F
15	By Major Industrial Division, Age Group & Sex			
16	By Industrial Division & Sex			
17	By Major Industrial Division, Educational Attainment & Sex			
18	By Major Industrial Division, Employment Status & Sex	B,G		B,F
19	By Major Industrial Division, Major Occupational Group & Sex	B,G		B,F
20	By Employment Sector & Sex			
<u>Unemployed</u>				
21	By Educational Attainment & Sex	B,G		B,F
22	By Unemployment Status & Sex	B		B,F

Explanatory Notes and Symbols Used

Notes:

1. The data base is updated on a continuous basis as new information are published and received by ESCWA.
2. In general, data are separately available by sex at total residence (i.e. urban + rural) level, unless otherwise stated.
3. Data for Qatar 1981 are unpublished and remain for internal use only.

Symbols used:

(c) Census
(s) Survey

A: By national, non-national and total population
B: By total population only
C: By national and total population
D: By national population only
E: By non-national population only
F: By urban, rural and total residence
G: By sex = total only.

Annex II. Coding structure and list of codes

A. Coding structure

The coding structure for data identification is given below:

1. For source and country notes (S_C_NOTE.wk1) and table notes for a specific table (N_xx.wk1),

<u>Column</u>	<u>Characters</u>	<u>Notation</u>
A	1-3	United Nations standard 3-digit alpha country code
	4-5	Year of census or survey
B		Source and country note or table note

2. For a specific table (T_xx.wk1),

<u>Column</u>	<u>Characters</u>	<u>Notation</u>
A	1-3	United Nations standard 3-digit alpha country code
	4-5	Year of census or survey
B	1-2	Nationality code
	3	Residence code
C		Sex code
D+		Actual data

B. List of codes

1. Country (3-digit alpha)

<u>Code</u>	<u>Name</u>	<u>Code</u>	<u>Name</u>
BAH	Bahrain	LEB	Lebanon
PDY	Democratic Yemen	QAT	Qatar
EGY	Egypt	SAU	Saudi Arabia
IRQ	Iraq	SYR	Syrian Arab Republic
JOR	Jordan	UAE	United Arab Emirates
KUW	Kuwait	YEM	Yemen

2. Nationality

NL - National
NN - Non-national
TT - Total

3. Residence

U - Urban
R - Rural
T - Total

4. Sex

M - Male
F - Female
T - Total

Annex III. Abbreviations and symbols used

<u>xx</u>	- table or note number
<u>xxx</u>	- 3-digit alpha country code
E.A.P.	- economically active population
ISCO	- International Standard Classification of Occupations
ISIC	- International Standard Industrial Classification of All Economic Activities
1st time	- seeking employment for the first time
n.e.s.	- not elsewhere specified
...	- not available