



# General Assembly

Distr.: General  
18 June 2015

Original: English

---

Seventieth session

## **Proposed programme budget for the biennium 2016-2017**

### **Part II Political affairs**

### **Section 3 Political affairs**

**(Programme 2 of the biennial programme plan for the period 2016-2017)**

#### **Corrigendum**

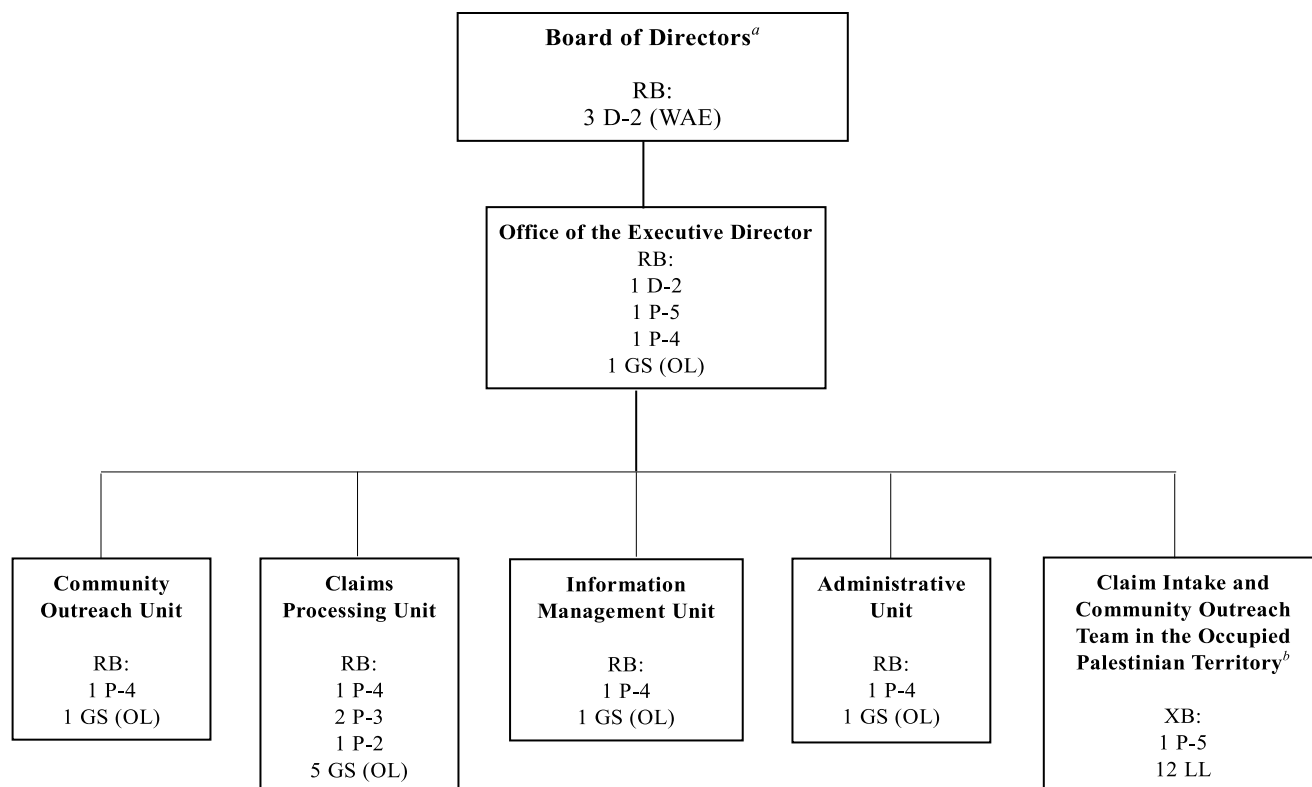
#### **Annex I**

#### **Organizational structure and post distribution for the biennium 2016-2017**

Replace the organization chart of the Office of the United Nations Register of Damage Caused by the Construction of the Wall in the Occupied Palestinian Territory, with the following:



## Office of the United Nations Register of Damage Caused by the Construction of the Wall in the Occupied Palestinian Territory



*Abbreviations:* GS, General Service; LL, Local level; OL, Other level; RB, regular budget; WAE, when actually employed; XB, extrabudgetary.

<sup>a</sup> The Executive Director of the Office of the Register of Damage acts as ex officio member of the Board.

<sup>b</sup> The Claims Intake and Community Outreach Team based in Ramallah is funded from the trust fund of the United Nations Register of Damage. All staff of the Unit are administered by the United Nations Office for Project Services.