

E

Distr.
LIMITED

E/ESCWA/27/5(Part III)
1 March 2012
ARABIC
ORIGINAL: ENGLISH



()

2012 / 10-7

() 6

2011-2010 ()

.2011-2010

-2-

4	2-1		
4	6-3		-
5	12-7		-
5	9-8		-
6	11-10		-
7	12		-
7	30-13		-
7	23-15		-
11	26-24		-
12	30-27		
13	84-31		-
			:1	-
14	41-33		
16	53-42	2:	-
18	61-54	3:	-
			:4	-
20	67-62		
			:5	-
21	73-68		
23	80-74	6:	-
24	84-81	:7	-

()

25	94-85	-
26	89-87	-
27	92-90	-
28	94-93	-
			-
		2011-2010	
29		
			-
34		
38		-
			-
39		
			-
41	 2011-2010	

-4-

-1

-2

-3

-4

-5

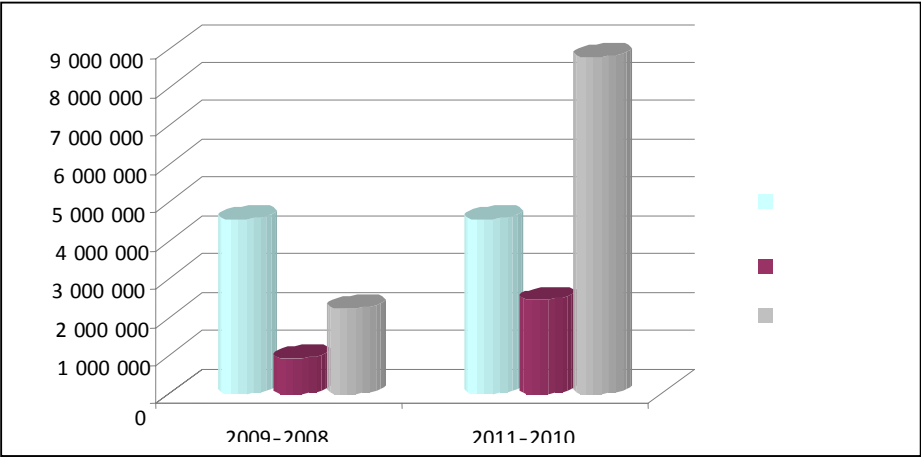
-6

2011-2010

-7

-1

2011-2010 2009-2008



-

-6-

-8

[
]
"
"

-9

2011-2010

:

[
]
-

-10

14

7.8
22

40

25

)

()

250 000

.(

-11

	2011	.
	.	.
	.	.
	-	.
(2011-2010	-12
	8.77	.
	12	.
)		.
	2025	.
	.	.
	.	.
	-	.
		-13
		.
		100
		.
		.2009-2008
		-14
		.
		.
	-	.
	2011-2010	-15
	.	.
	.	.

-8-

[

2010

]

-16

99.5

2011-2010

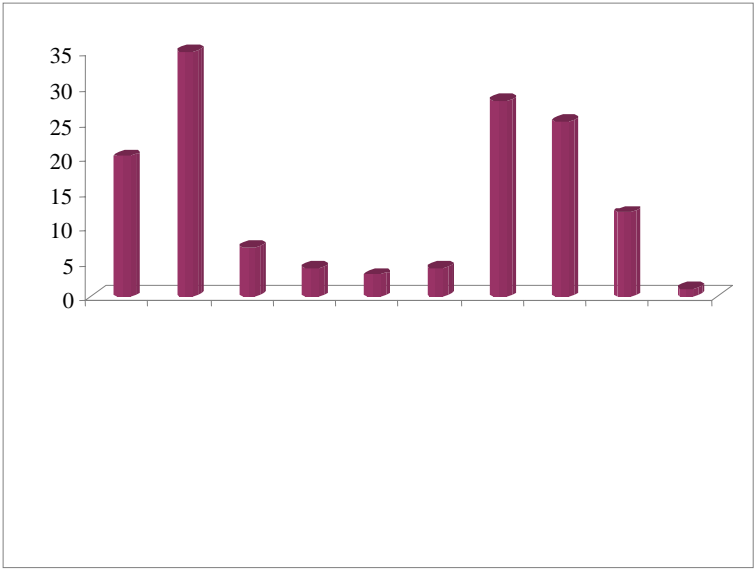
2011-2010

-17

-1

-18

-2



-19

.

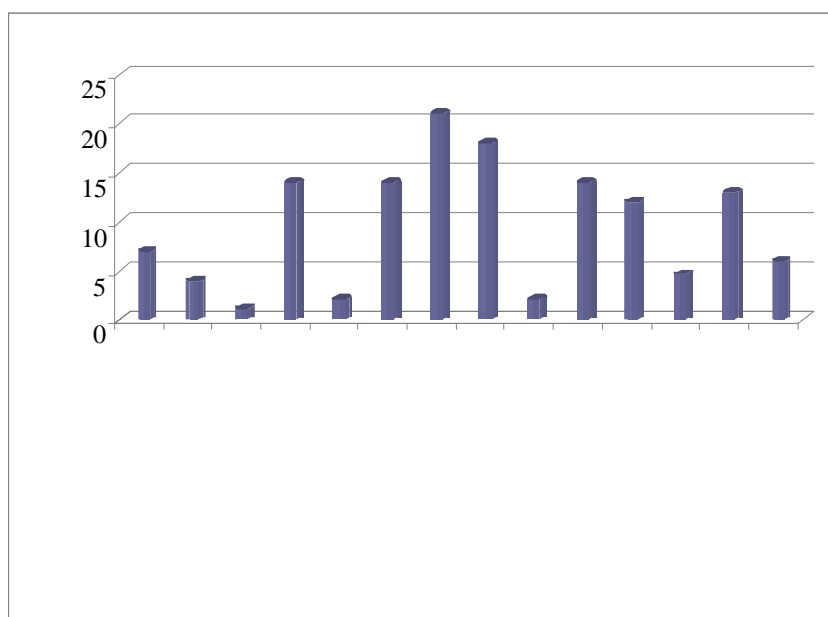
139

-20

.

-3

-10-



-2

47

22

-21

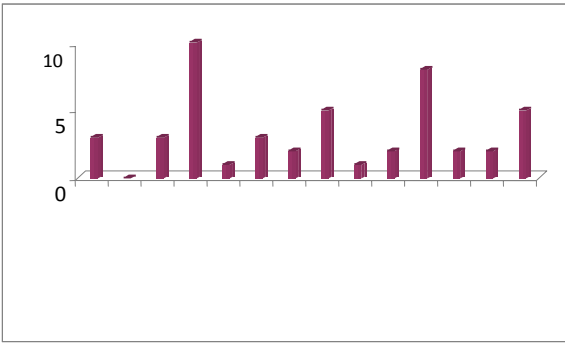
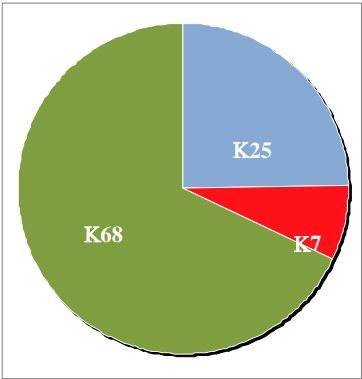
39

.2011-2010

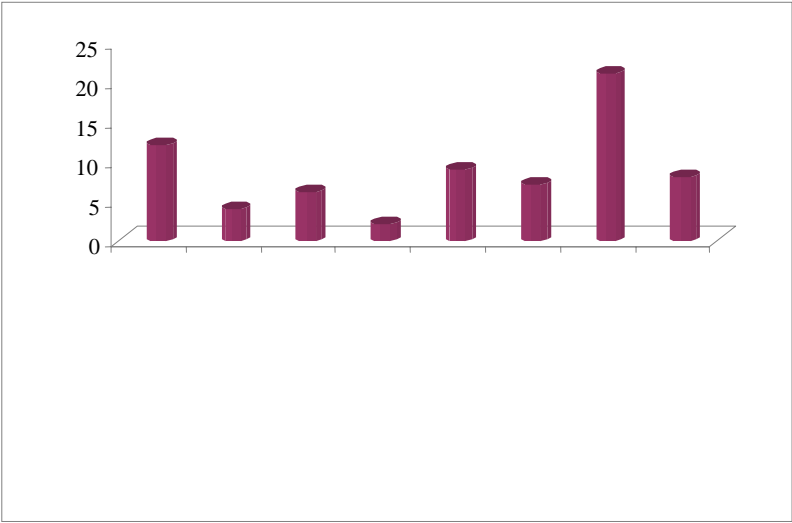
-5

-4

-11-



-6



-3

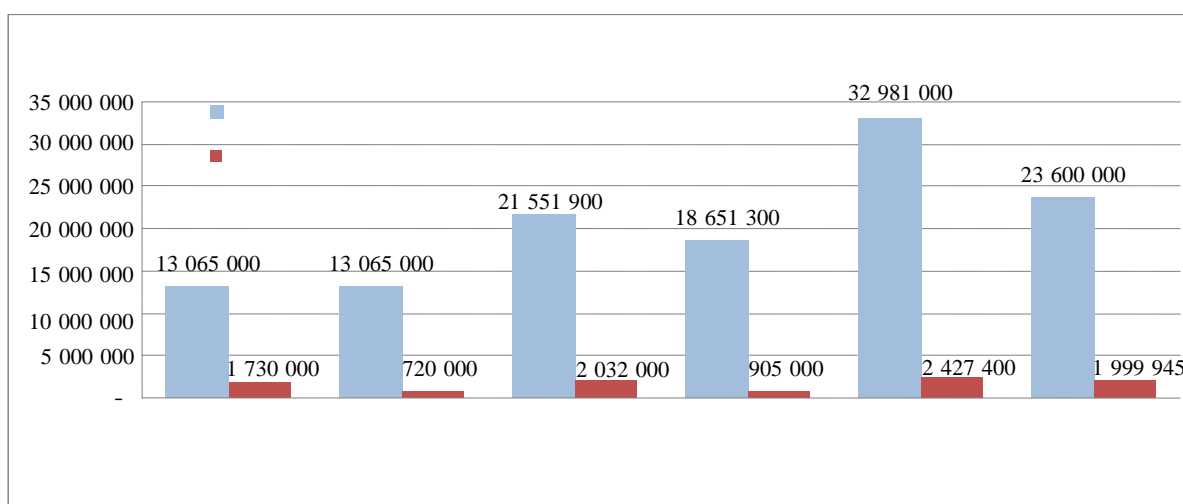
-22

-12-

2002
2011-2010

-24

() -7



7.8

13

-25

22

14 2011-2010
(2008-2007)

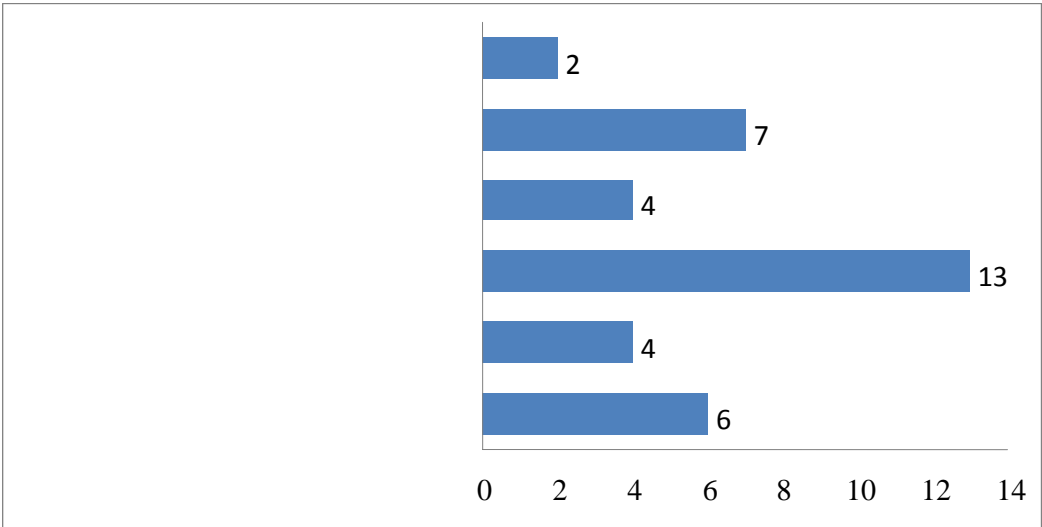
-26

2 427 400

905 000

-13-

) 1 999 945 . (2013-2012
-8
()



-

-27

2011-2010 -28

8.7 -29

.2011-2005
2009-2008
2011-2010

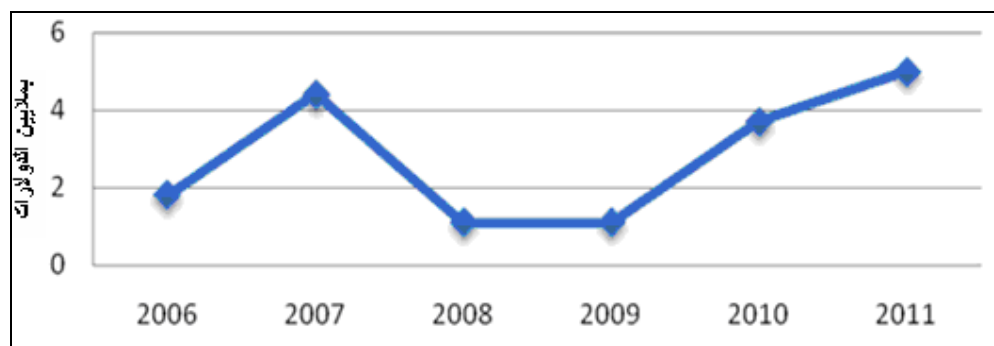
-14-

2011-2005

-9

()

2011	2010	2009	2008	2007	2006	
5	3.7	1.1	1.1	4.4	1.8	



2011-2010

-30

:

-
-
-
-
-

-31

-32

-16-

-38

-39

2012

()

1

-40

18

.20+

20+

.20+

.(2011 / 20+ 5-3)

.2012 /

()

$$\left[\begin{array}{c} . \\ . \end{array} \right]$$

$$\frac{\quad}{\quad} : \quad -2$$

$$\left. \begin{array}{c} .1 \end{array} \right\}$$

-41

$$\quad :2 \quad -$$

$$\frac{\quad}{\quad} -1$$

-42

$$\left[\begin{array}{c} . \\ . \end{array} \right]$$

$$\frac{\quad}{\quad} 2$$

$$\frac{\quad}{\quad} 2011-2010$$

$$\left. \begin{array}{c} . \\ . \end{array} \right\} \quad () :$$

$$\frac{\quad}{\quad} ()$$

$$\frac{\quad}{\quad} ()$$

-43

-18-

-44

-45

-46

-47

-48

-49

()

-50

(2011 / 8-7)

-19-

-51

-2

-52

()

-53
2011

:3 -

-1

3

-54

()

2011-2010

-55

-20-

.2012

-56

()

-57

-58

-59

-60

-2

-61

-21-

:4 -

_____ -1

-62

_____ ()

2011-2010

-63

[]

-64

_____ ()

-22-

-65

-66

-2

-67

:5

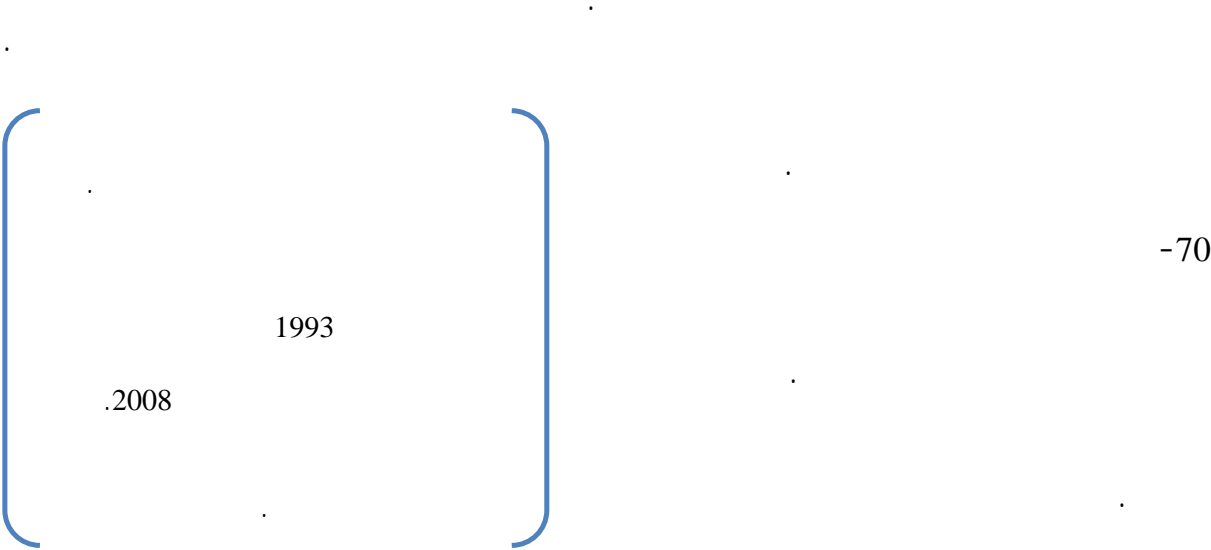
-

-1

-68

()

-69



-24-

-73

:6

-

-1

-74

(2000) 1325

()

-75

" "

()

-76

-25-

-77

(2000) 1325

-78

-79

-2

-80

:7

-

-1

-81

2011-2010

7

-82

-26-

175

-83

12

:

-2

7

-84

-

-85

2010

-86

-

-1

-87

2011-2010

63

38

60

-1

83	5	6	
50	2	4	
0	-	2	
73	8	11	
-	-	3	
22	2	9	
28	2	7	
-	-	3	
100	7	7	
-	-	7	
-	-	5	
71	5	7	
80	4	5	
43	3	7	
60	38	63	

(-) : _____

80

-88

-28-

-2

2	-	3	33	
K5	-	K8	K87	
2	2	1	33	
K5	K5	K3	K87	
3	-	4	31	
K8	-	K10	K82	
1	4	-	33	
K3	K10	-	K87	
	8	3	28	
	K21	K8	K74	
-	19	49	27	
-	K19	K52	K29	

(-) : _____

-2

-89

2011-2010

3

-90

11

-91

2010-2008

11

-92

2011-2006

11

1

-93

II

-94

-30-

2011-2010

-1

()	
:	
:	
2013-2011	

-2

2020-1920	
)	
(
" "	

[illegible][illegible]

[illegible]

-5

[illegible]

	-6

2011-2010

3	3	-	-	
1	-	-	1	
3	3	-	-	
12	10	-	2	
1	1	-	0	
19	3	4	12	
3	2	-	1	
5	5	-	-	
1	1	-	-	
2	2	-	-	
8	8	-	-	
2	2	-	-	
2	2	-	-	
5	5	-	-	
2		1	1	
69	47	5	17	

(-) : _____

2011-2010

-1

[illegible]

-36-

[illegible]

-2

II	II
II	II
II	II
II	II

-3

[illegible]

-4

" . "	

	-5
DevInfo	
	-6
:	

-38-

1325	
1325	

-7

[illegible]

	2	
	2	
	1	
	1	
	2	
"	1	
:	1	
"	1	
	1	
	1	
	1	
	1	
	1	
	1	
	1	
	1	
	4	
	5	
	2	
(20+)	3	
	2	
	1	
	1	
	37	

-40-

			(2009-2008)	
506 000	2011	2009		
401 000	2012	2009		
736 000	2012	2009		
]:	
1 193 000	2012	2009	[
703 000	2012	2008		
			(2011-2010)	
547 200	2012	2010		
502 200	2014	2010		
379 000	2013	2011		
509 000	2014	2011		
653 000	2012	2010		
1 006 500	2012	2011		

749 400	2012	2011		
1 192 000	2014	2010		
738 000	2013	2011		
452 000	2012	2011		
975 300	2012	2010		
800 000	2013	2012		
526 300	2013	2010		
810 600	2012	2010		

-42-

2011-2010

		2011-2010			
2012	2010	1 448 695	1 448 695		
2012	2010	1 385 662	1 385 662		-
2013	2010	2 951 325	3 000 000		
2013	2011	544 929	5 100 000		
2013	2011	300 000	300 000		
2014	2011	60 000	120 000		
2012	2010	50 000	100 000		
2014	2011	161 250	161 250	20+	
2013	2011	70 000	70 000		
2012	2011	25 000	25 000		
2015	2011	866 255	1 479 000		

-43-

		2011-2010			
2011	2010	200 000	200 000	2011 (2010)	
2011	2009	25 000	25 000	2010	/
2011	2009	231 983	646 354		-
2011	2011	67 800	84 750		
2011	2011	11 000	11 000	(2000) 1325	
