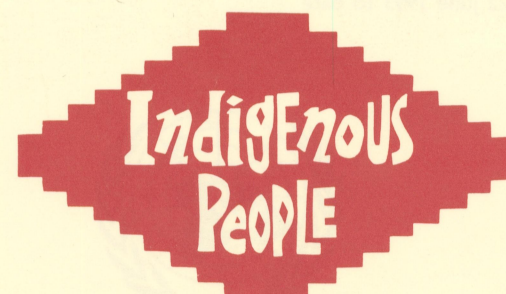
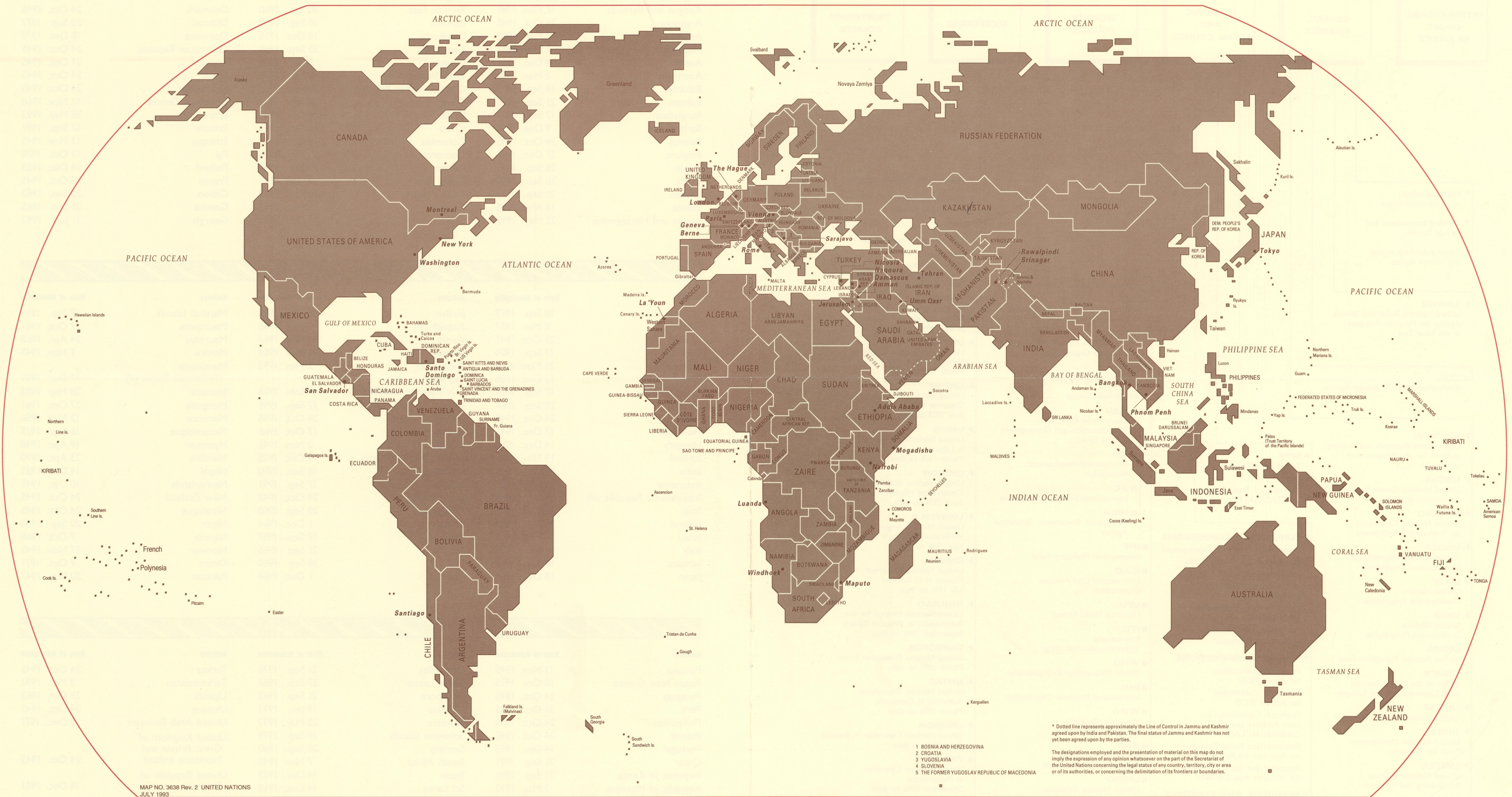


# United Nations Map of the World



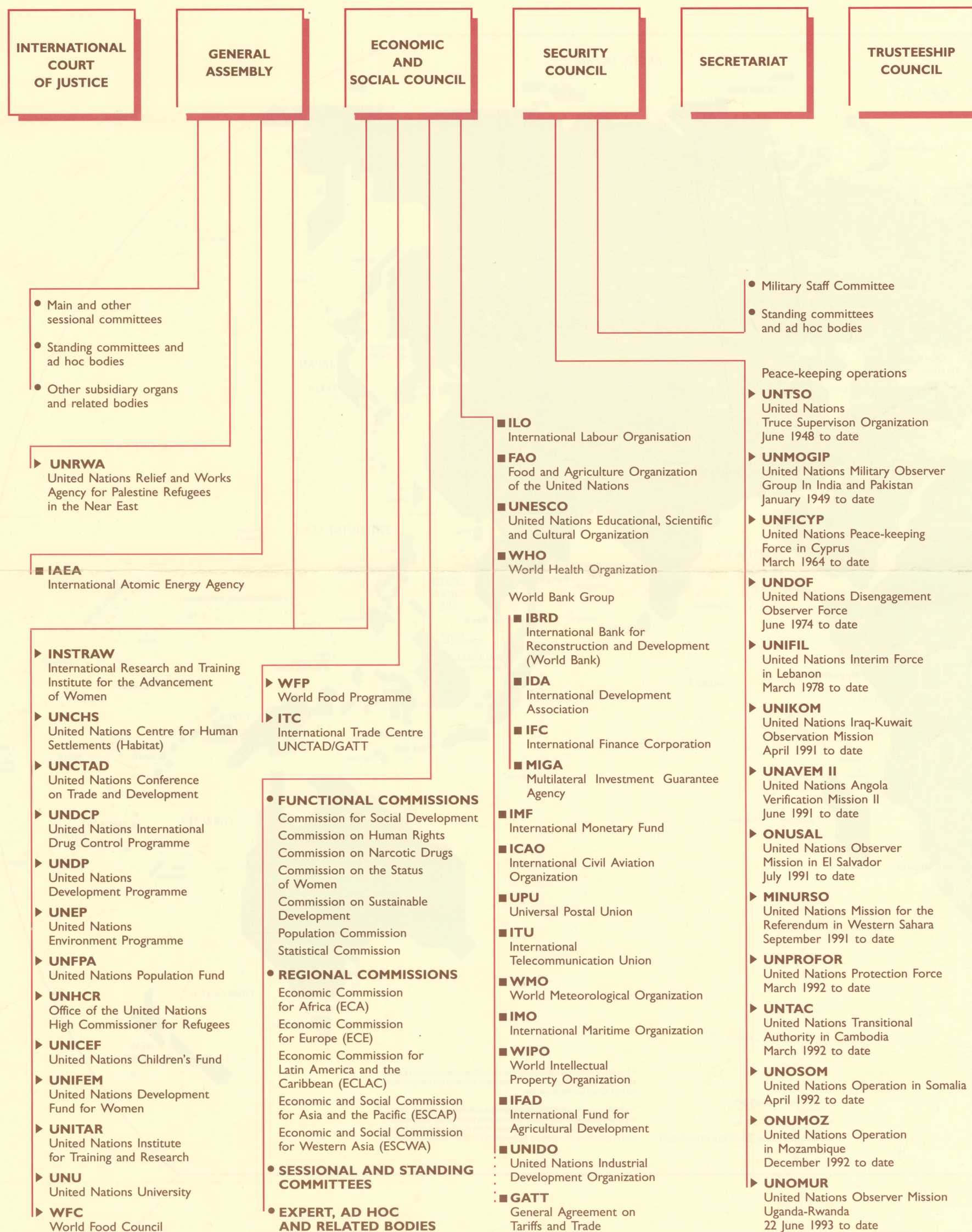
INTERNATIONAL YEAR 1993

map A 000/0/1993 c.i.



# The United Nations System

## PRINCIPAL ORGANS OF THE UNITED NATIONS



# Members of the United Nations

(As of May 1993)

Country	Date of Admission	Country	Date of Admission	Country	Date of Admission
Afghanistan	19 Nov. 1946	Botswana	17 Oct. 1966	Cyprus	20 Sep. 1960
Albania	14 Dec. 1955	Brazil	24 Oct. 1945	Czech Republic	19 Jan. 1993
Algeria	8 Oct. 1962	Brunei Darussalam	21 Sep. 1984	Democratic People's Republic of Korea	17 Sep. 1991
Angola	1 Dec. 1976	Bulgaria	14 Dec. 1955	Denmark	24 Oct. 1945
Antigua and Barbuda	11 Nov. 1981	Burkina Faso	20 Sep. 1960	Djibouti	20 Sep. 1977
Argentina	24 Oct. 1945	Burundi	18 Sep. 1962	Dominica	18 Dec. 1978
Armenia	2 Mar. 1992	Cambodia	14 Dec. 1955	Dominican Republic	24 Oct. 1945
Australia	1 Nov. 1945	Cameroon	20 Sep. 1960	Ecuador	21 Dec. 1945
Austria	14 Dec. 1955	Canada	9 Nov. 1945	Egypt	24 Oct. 1945
Azerbaijan	2 Mar. 1992	Cape Verde	16 Sep. 1975	El Salvador	24 Oct. 1945
Bahamas	18 Sep. 1973	Central African Republic	20 Sep. 1960	Equatorial Guinea	12 Nov. 1968
Bahrain	21 Sep. 1971	Chad	20 Sep. 1960	Eritrea	28 May 1993
Bangladesh	17 Sep. 1974	Chile	24 Oct. 1945	Estonia	17 Sep. 1991
Barbados	9 Dec. 1966	China	24 Oct. 1945	Ethiopia	13 Nov. 1945
Belarus	24 Oct. 1945	Colombia	5 Nov. 1945	Fiji	13 Oct. 1970
Belgium	27 Dec. 1945	Comoros	12 Nov. 1975	Finland	14 Dec. 1955
Belize	25 Sep. 1981	Congo	20 Sep. 1960	France	24 Oct. 1945
Benin	20 Sep. 1960	Costa Rica	2 Nov. 1945	Gabon	20 Sep. 1960
Bhutan	21 Sep. 1971	Côte d'Ivoire	20 Sep. 1960	Gambia	21 Sep. 1965
Bolivia	14 Nov. 1945	Croatia	22 May 1992	Georgia	31 July 1992
Bosnia and Herzegovina	22 May 1992	Cuba	24 Oct. 1945		

Country	Date of Admission	Country	Date of Admission	Country	Date of Admission
Germany	18 Sep. 1973	Jordan	14 Dec. 1955	Marshall Islands	17 Sep. 1991
Ghana	8 Mar. 1957	Kazakhstan	2 Mar. 1992	Mauritania	27 Oct. 1961
Greece	25 Oct. 1945	Kenya	16 Dec. 1963	Mauritius	24 Apr. 1968
Grenada	17 Sep. 1974	Kuwait	14 May 1963	Mexico	7 Nov. 1945
Guatemala	21 Nov. 1945	Kyrgyzstan	2 Mar. 1992	Micronesia (Federated States of)	17 Sep. 1991
Guinea	12 Dec. 1958	Lao People's Democratic Republic	14 Dec. 1955	Monaco	28 May 1993
Guinea-Bissau	17 Sep. 1974	Latvia	17 Sep. 1991	Mongolia	27 Oct. 1961
Guyana	20 Sep. 1966	Lebanon	24 Oct. 1945	Morocco	12 Nov. 1956
Haiti	24 Oct. 1945	Lesotho	17 Oct. 1966	Mozambique	16 Sep. 1975
Honduras	17 Dec. 1945	Liberia	2 Nov. 1945	Myanmar	19 Apr. 1948
Hungary	14 Dec. 1955	Libyan Arab Jamahiriya	14 Dec. 1955	Namibia	23 Apr. 1990
Iceland	19 Nov. 1946	Liechtenstein	18 Sep. 1990	Nepal	14 Dec. 1955
India	30 Oct. 1945	Lithuania	17 Sep. 1991	Netherlands	10 Dec. 1945
Indonesia	28 Sep. 1950	Luxembourg	24 Oct. 1945	New Zealand	24 Oct. 1945
Iran (Islamic Republic of)	24 Oct. 1945	Madagascar	20 Sep. 1960	Nicaragua	24 Oct. 1945
Iraq	21 Dec. 1945	Malawi	1 Dec. 1964	Niger	20 Sep. 1960
Ireland	14 Dec. 1955	Malaysia	17 Sep. 1957	Nigeria	7 Oct. 1960
Israel	11 May 1949	Maldives	21 Sep. 1965	Norway	27 Nov. 1945
Italy	14 Dec. 1955	Mali	28 Sep. 1960	Oman	7 Oct. 1971
Jamaica	18 Sep. 1962	Malta	1 Dec. 1964	Pakistan	30 Sep. 1947
Japan	18 Dec. 1956				

Country	Date of Admission	Country	Date of Admission	Country	Date of Admission
Panama	13 Nov. 1945	Seychelles	21 Sep. 1976	Turkey	24 Oct. 1945
Papua New Guinea	10 Oct. 1975	Sierra Leone	27 Sep. 1961	Turkmenistan	2 Mar. 1992
Paraguay	24 Oct. 1945	Singapore	21 Sep. 1965	Uganda	25 Oct. 1962
Peru	31 Oct. 1945	Slovakia	19 Jan. 1993	Ukraine	24 Oct. 1945
Philippines	24 Oct. 1945	Slovenia	22 May 1992	United Arab Emirates	9 Dec. 1971
Poland	24 Oct. 1945	Solomon Islands	19 Sep. 1978	United Kingdom of Great Britain and Northern Ireland	24 Oct. 1945
Portugal	14 Dec. 1955	Somalia	20 Sep. 1960	United Republic of Tanzania	14 Dec. 1961
Qatar	21 Sep. 1971	South Africa	7 Nov. 1945	United States of America	24 Oct. 1945
Republic of Korea	17 Sep. 1991	Spain	14 Dec. 1955	Uruguay	18 Dec. 1945
Republic of Moldova	2 Mar. 1992	Sri Lanka	14 Dec. 1955	Uzbekistan	2 Mar. 1992
Romania	14 Dec. 1955	Sudan	12 Nov. 1956	Vanuatu	15 Sep. 1981
Russian Federation	24 Oct. 1945	Suriname	4 Dec. 1975	Venezuela	15 Nov. 1945
Rwanda	18 Sep. 1962	Swaziland	24 Sep. 1968	Viet Nam	20 Sep. 1977
Saint Kitts and Nevis	23 Sep. 1983	Sweden	19 Nov. 1946	Yemen	30 Sep. 1947
Saint Lucia	18 Sep. 1979	Syrian Arab Republic	24 Oct. 1945	Yugoslavia	24 Oct. 1945
Saint Vincent and the Grenadines	16 Sep. 1980	Tajikistan	2 Mar. 1992	Zaire	20 Sep. 1960
Samoa	15 Dec. 1976	Thailand	16 Dec. 1946	Zambia	1 Dec. 1964
San Marino	2 Mar. 1992	The former Yugoslav Republic of Macedonia	8 April 1993	Zimbabwe	25 Aug. 1980
Sao Tome and Principe	16 Sep. 1975	Togo	20 Sep. 1960		
Saudi Arabia	24 Oct. 1945	Trinidad and Tobago	18 Sep. 1962		
Senegal	28 Sep. 1960	Tunisia	12 Nov. 1956		