

GENERAL
ST/SGB/94/Rev.4/Amend.5
20 March 1957

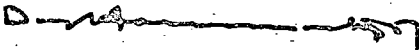
SECRETARY-GENERAL'S BULLETIN

To: Members of the Staff of the United Nations

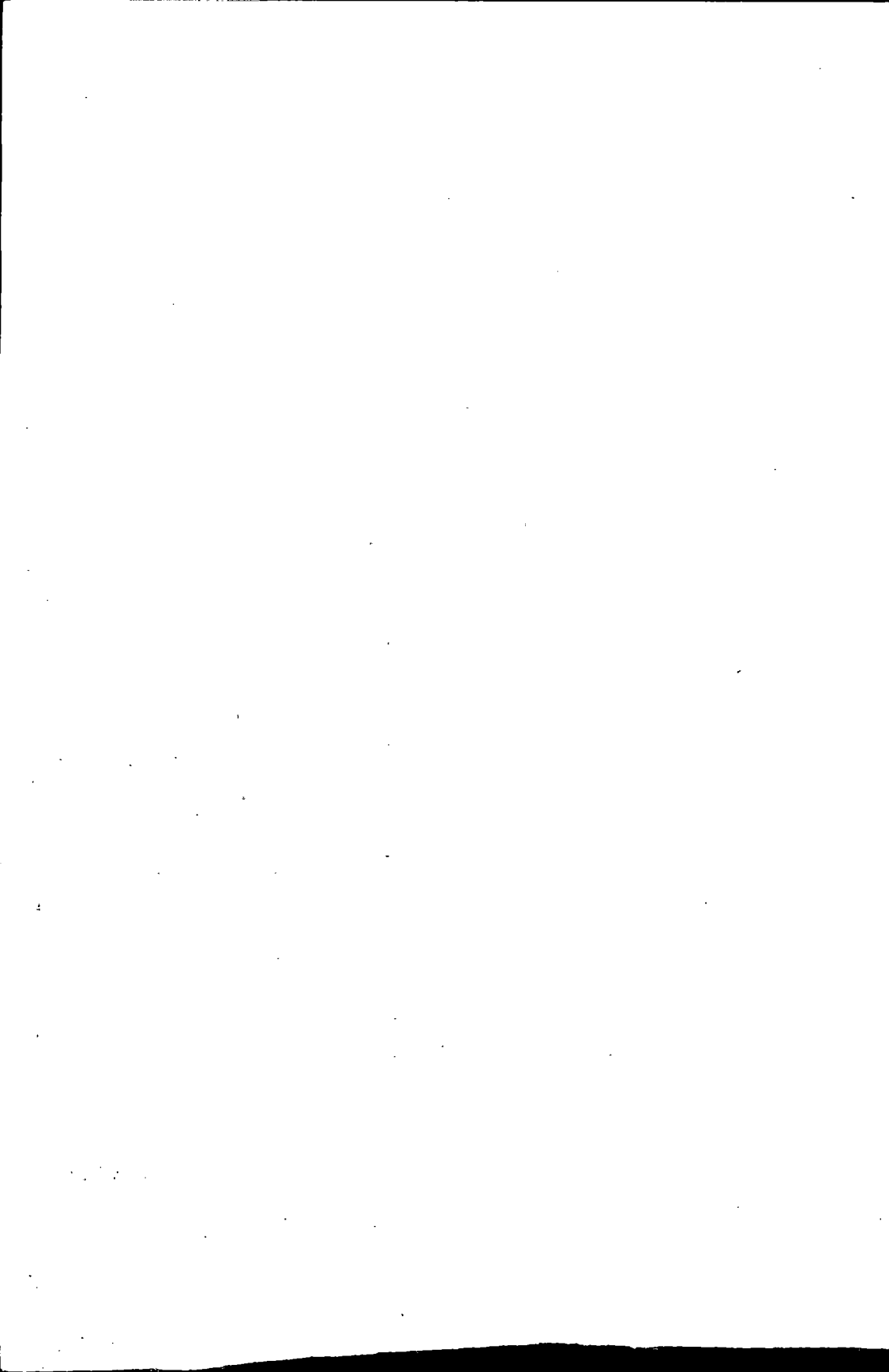
Subject: SALARIES OF GENERAL SERVICE STAFF

1. Attached is a revised schedule of salaries for staff members in the General Service category in Appendix B of ST/SGB/94/Rev.4.

2. The revised rates will apply with effect from 1 January 1957.



Dag HAMMARSKJÖLD
Secretary-General



APPENDIX B
NEW YORK
GENERAL SERVICE CATEGORY

Annual Gross Salaries - Subject to Staff Assessment
(Figures shown in brackets represent approximate net equivalent)

Effective 1 January 1957

Level	Step	Step	Step	Step	Step	Step	Step	Step	Step	Step	(Personal ceilings)		
	I	II	III	IV	V	VI	VII	VIII	IX	X	a.	b.	c.
	\$	\$	\$	\$	\$	\$	\$	\$	\$	\$	\$	\$	\$
Messenger . . .	2,800 (2,380)	2,930 (2,490)	3,060 (2,600)	3,200 (2,720)	3,320 (2,820)	3,440 (2,920)	3,570 (3,030)	3,700 (3,150)	-	-	3,820 (3,250)	3,950 (3,360)	4,070 (3,460)
Junior	3,200 (2,720)	3,320 (2,820)	3,440 (2,920)	3,570 (3,030)	3,700 (3,150)	3,820 (3,250)	3,950 (3,360)	4,070 (3,460)	4,200 (3,560)	-	4,330 (3,660)	4,450 (3,760)	4,570 (3,860)
Intermediate . .	3,700 (3,150)	3,820 (3,250)	3,950 (3,360)	4,070 (3,460)	4,200 (3,560)	4,330 (3,660)	4,450 (3,760)	4,570 (3,860)	4,700 (3,960)	4,840 (4,070)	5,000 (4,200)	5,150 (4,320)	5,290 (4,430)
Senior	4,200 (3,560)	4,400 (3,720)	4,600 (3,880)	4,800 (4,040)	5,000 (4,200)	5,220 (4,380)	5,440 (4,550)	5,660 (4,730)	5,880 (4,900)	-	6,100 (5,080)	6,320 (5,240)	6,530 (5,400)
Principal	5,000 (4,200)	5,290 (4,430)	5,580 (4,660)	5,880 (4,900)	6,170 (5,130)	6,460 (5,350)	6,760 (5,570)	7,060 (5,800)	7,370 (6,030)	7,670 (6,250)	7,990 (6,490)	8,310 (6,720)	8,610 (6,930)

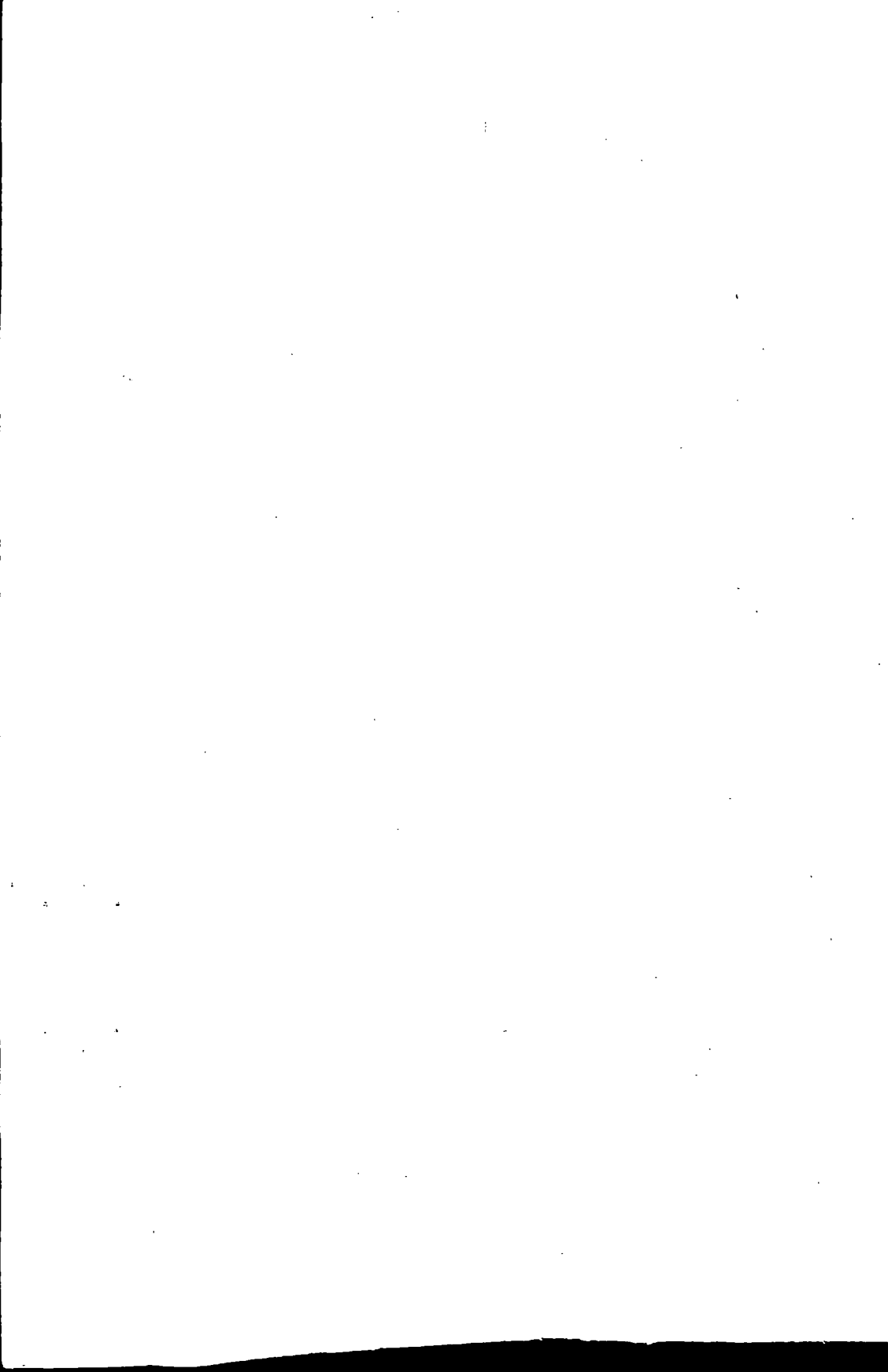
Dependency Allowances:

Dependent spouse	\$300
Dependent child	250
except for first dependent child of a widowed or divorced staff member	400
Secondary dependant	200

Non-resident's Allowance: In principle, the non-resident's allowance at Headquarters shall amount to \$200 per annum after staff assessment, provided that:

- (i) In order to simplify application of the staff assessment plan, the exact net equivalent of the full allowance may be varied between \$190 and \$210 per annum, and
- (ii) In no case shall the amount of the non-resident's allowance, plus language allowance if any, when added to the staff member's salary, bring the total to more than \$6,320.

Increments: Salary increments within the levels shall be awarded annually, on the basis of satisfactory service.



APPENDIX B

HEADQUARTERS

Overtime Payment and Compensatory Time Off for Short-Term Appointees

Staff members on short-term appointments shall be governed by the following provisions:

- (a) manual workers who work more than 40 hours during any one work week shall be compensated at the rate of one and one half times their salary;
- (b) staff members in level G-1 through G-5 shall be given compensatory time off equal to the number of hours worked in excess of 40 hours during one work week. If such compensatory time off cannot be granted prior to the end of the calendar month in which the overtime is worked the staff member shall be compensated for the overtime by an additional payment, at the rate of one and one half times the salary established for overtime purposes.
- (c) Staff members in level P-1 and above who work substantial and recurrent periods of overtime may be granted occasional time off for such periods as the Secretary-General may consider appropriate.
- (d) Overtime payments shall be reckoned to the nearest hour and work periods of less than one-half hour shall not be considered.

